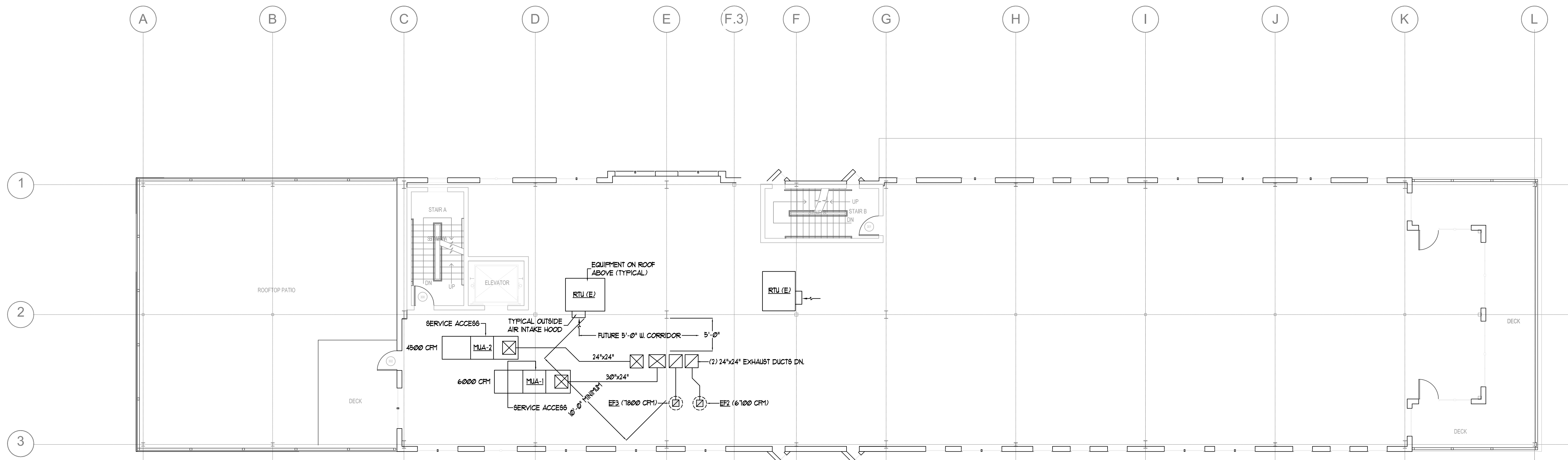


Roof Plan



- General Mechanical Notes**
1. Locate plumbing vents a minimum of 30'-0" from outside air intake openings.
 2. Locate exhaust fan vents a minimum of 10'-0" from outside air intake openings.
 3. The Electrical Contractor shall provide duct smoke detectors for each air handling system, connected to the Building Fire Alarm system.
 4. The Contractor shall determine the exact locations for equipment and duct shafts.

3rd Floor Plan

Prepared For:	MAINE WHARF LLC 72 COMMERCIAL STREET PORTLAND, ME 04101
Consulting Engineer:	BENNETT ENGINEERING MECHANICAL - ELECTRICAL 6007 BRADDOCK ST.
Architect:	ARCHETYPE architects 48 Union Wharf Portland, Maine 04101 (207) 772-6022 Fax (207) 772-4056
Project:	MAINE WHARF 68 COMMERCIAL STREET PORTLAND, MAINE
Revisions:	4/13/15 - Misc. per HVAC Services
Date:	3-19-15
Scale:	1/8"=1'-0" or As Noted
Tenant Fit-Up HVAC 3rd Floor Plan and Roof Plan	
<h1>M.5</h1>	