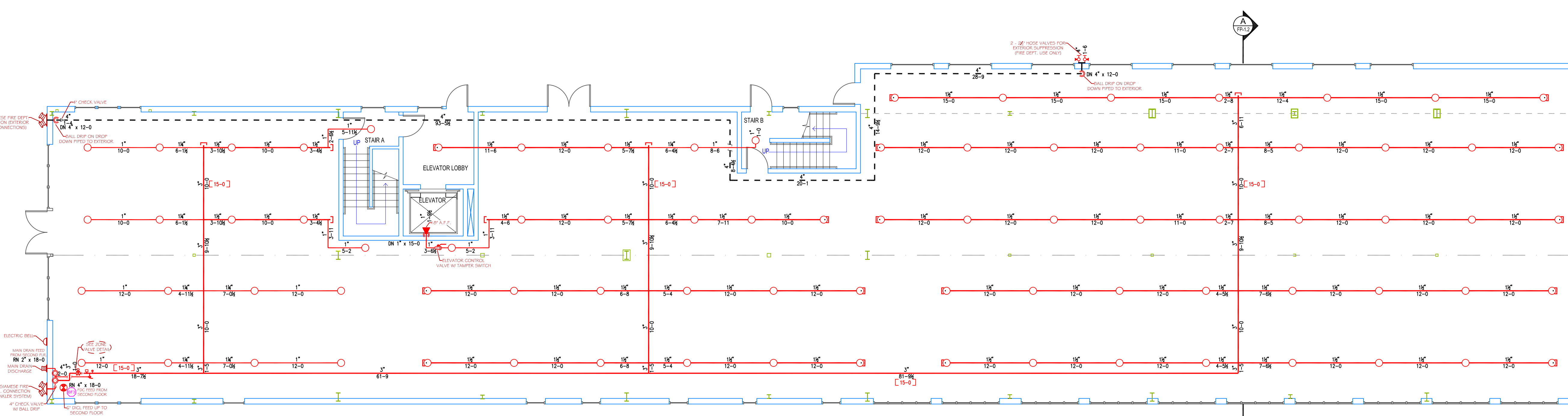


**SECOND FLOOR CALC STICKER**  
**HYD. DESIGN CRITERIA**  
 (NFPA 13 2010 ed. - WET)  
 LOCATION: SECOND FLOOR FUTURE TENANT AREA  
 HAZARD CLASSIFICATION: ORDINARY GROUP II  
 DENSITY = 2.0 GPM/SQ. FT.  
 AREA OF OPERATION = 1,050 SQ. FT.  
 HOSE DEMAND: 250 GPM  
 NO. OF SPRINKLERS = 13  
 SYSTEM DEMAND (INCLUDING HOSE) @  
 BASE OF RISER = 616 GPM @ 92 PSI  
 SAFETY MARGIN = 15 PSI



THIS DRAWING HAS BEEN REVIEWED FOR GENERAL COMPLIANCE WITH THE 2010 ed. OF NFPA 13 - STANDARD FOR AUTOMATIC SPRINKLER SYSTEMS. ANY DEVIATIONS FROM THIS DOCUMENT SHALL BE MADE UNDER THE SUPERVISION OF A CERTIFIED DESIGN PROFESSIONAL.  
 REVIEW COMPLETED BY:  
 JEREMY A. FOSS  
 MAINE RMS #808  
 NICET LEVEL III  
 CERTIFICATION #128801  
 SIGNED: [Signature]

**HIGH TECH FIRE PROTECTION**  
 P.O. BOX 156  
 MINOT, ME. 04258-0258  
 TEL: (207) 998-2551 FAX: (207) 998-4187  
 MAINE LICENSE # 102

ARCHITECT:  
**ARCHETYPE ARCHITECTS**  
 PORTLAND, ME

CONTRACTOR:  
**KEELEY CONSTRUCTION**  
 PORTLAND, ME

LEGEND:  
 ○ RIS PIPE RISER UP  
 ○ RIS PIPE RISER DOWN  
 — STEEL PIPE (WET)  
 — STEEL PIPE (STANDPIPE)  
 — WET SYSTEM RISER  
 ○ HYDRAULIC CALC. POINT  
 [10-0] PIPE ELEVATION A.F.F.

DESIGN NOTES:  
 \*ALL PIPING 1/2" AND LARGER TO BE SCHEDULE 40 STEEL W/ GROOVED FITTING.  
 \*ALL PIPING 1/4" AND SMALLER TO BE SCHEDULE 40 STEEL WITH THREADED FITTING.  
 \*POSITION, LOCATION, SPACING, AND USE OF SPRINKLERS AND HANGERS SHALL BE IN ACCORDANCE WITH NFPA 13 2010 ed.  
 \*HYDRAULIC CALCULATION PROCEDURES HAVE BEEN DONE IN ACCORDANCE WITH NFPA 13 2010 ed. (SEE PLANS FOR LOCATION OF REMOTE AREAS, HYDRAULIC REFERENCE POINTS, AND SYSTEM DEMANDS)  
 \*ALL ELECTRICAL WORK TO BE DONE BY OTHERS.  
 \*DIMENSIONS AND LOCATIONS GIVEN FOR SPRINKLER HEADS AND PIPE MAY VARY TO ACCOMMODATE ACTUAL FIELD CONDITIONS.  
 \*OWNER TO PROVIDE SUFFICIENT HEAT TO PREVENT FREEZING IN WATER FILLED SPRINKLER PIPE AND EQUIPMENT.  
 \*OTHER TRADES TO COORDINATE THEIR WORK WITH SPRINKLER CONTRACTOR.  
 \*ALL NEWLY INSTALLED SPRINKLER HEADS ARE TO BE QUICK RESPONSE U.N.O.  
 \*OWNER IS RESPONSIBLE FOR MAINTAINING THE SPRINKLER SYSTEMS IN ACCORDANCE WITH THE CURRENT EDITION OF NFPA 25.  
 \*INSPECTIONS, TESTING AND MAINTENANCE OF WATER BASED FIRE PROTECTION SYSTEMS AND/OR ALL APPLICABLE FEDERAL, STATE, AND LOCAL LAWS, CODES AND ORDINANCES.

GLOBE\* MODEL GL5615  
 167/155  
 K=5.6  
 1/2" BRASS UPRIGHT  
 (130 SQ. FT. ORD. HAZARD)

GLOBE\* MODEL GL5626  
 1/155  
 K=5.6  
 1/2" BRASS HORIZONTAL SIDEWALL  
 (LOCATED 18" ABOVE PIT FLOOR)

GLOBE\* MODEL GL5641  
 6/155  
 K=5.6  
 1" DRY BARREL FLUSH MOUNT WHITE HORIZONTAL SIDEWALL  
 (196 SQ. FT. LIGHT HAZARD)

\* OR APPROVED EQUAL  
 TOTAL HEADS ON SHEET: 168  
 SCALE: 1/8" = 1'-0"  
 DATE: APRIL 16, 2014  
 DESIGNER: JEREMY A. FOSS  
 MAINE RMS #808  
 NICET LEVEL III CERT. #128801  
 CHECKED BY: E. POULIN (RMS# 515)  
 NICET LEVEL IV CERT. #108534  
 LOCATION:  
**68 COMMERCIAL ST.**  
 PORTLAND, ME  
 DRAWING TITLE:  
**MAINE WHARF**  
 (1ST & 2ND FLOOR)  
 FIRE PROTECTION PLAN  
 (NFPA 13 2010 ed.)  
 DRAWING NO.:  
**FP-1.1**