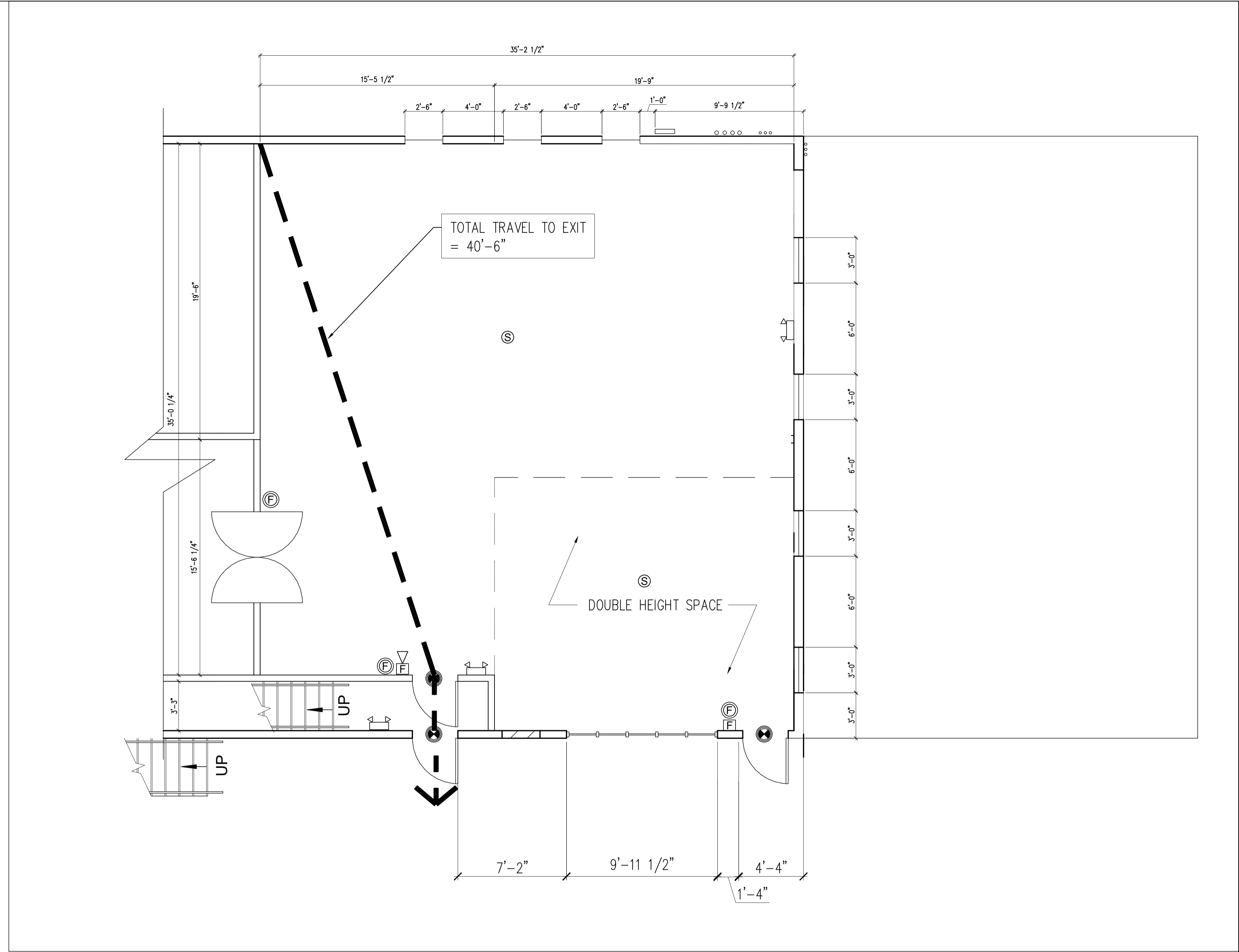


LIFE SAFETY LEGEND:

EMERGENCY LIGHTING	
EXISTING ILLUMINATED EXIT SIGN	
NEW ILLUMINATED EXIT SIGN	
NEW ILLUMINATED DIRECTIONAL EXIT SIGN	
PATH OF EGRESS	
1-HR RATED SEPARATION	
FACP - LOCATION TBD	
ANNUNCIATOR - LOCATION TBD	
SMOKE DET.	
HORN/STROBE	
STROBE ONLY	
PULL STATION	
MONITOR MODULE (AMOUNT TBD)	
FIRE EXTINGUISHER	



3 | LIFE SAFETY PLAN  
SCALE: 1/8"=1'-0"

Date: APRIL 13, 2016	Scale: as noted	LIFE SAFETY PLAN								
<p>Revisions:</p> <table border="1" style="width: 100%; height: 40px; border-collapse: collapse;"> <tr><td style="width: 20px;"> </td><td> </td></tr> <tr><td> </td><td> </td></tr> <tr><td> </td><td> </td></tr> <tr><td> </td><td> </td></tr> </table>										
<p>Project: <b>MAINE WHARF RETAIL SPACE</b></p>										
<p>Architect: <b>ARCHETYPE architects</b> 48 Union Wharf Portland, Maine 04101 (207) 772-6022 Fax (207) 772-4056</p>										
<p>Consulting Engineer:</p>										
<p>Prepared For:</p>										
<p>Date: 08/09/16</p>										

A1.01