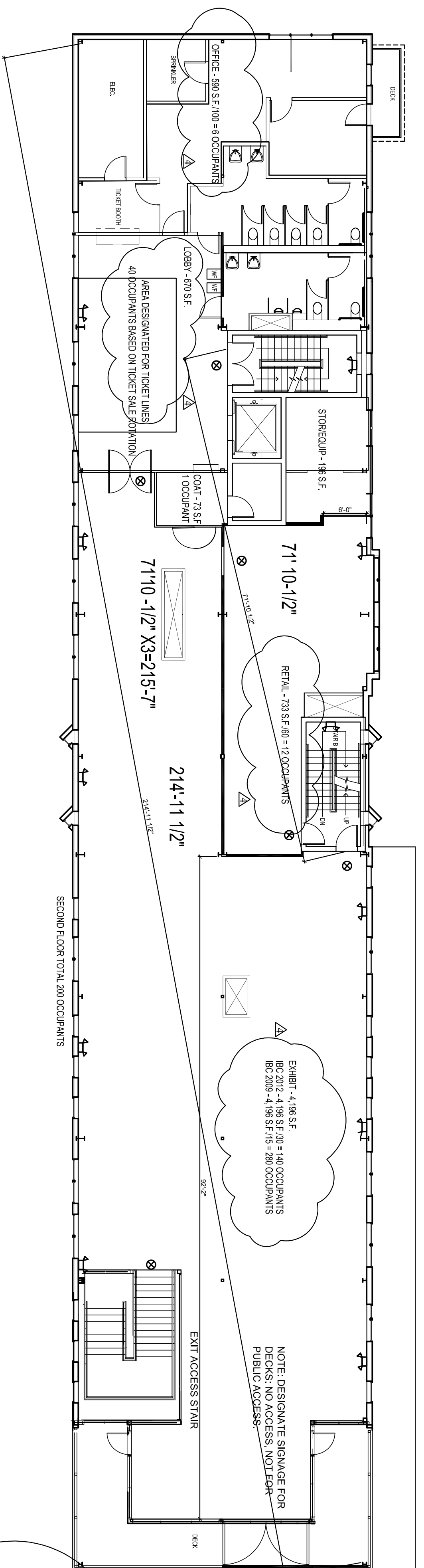
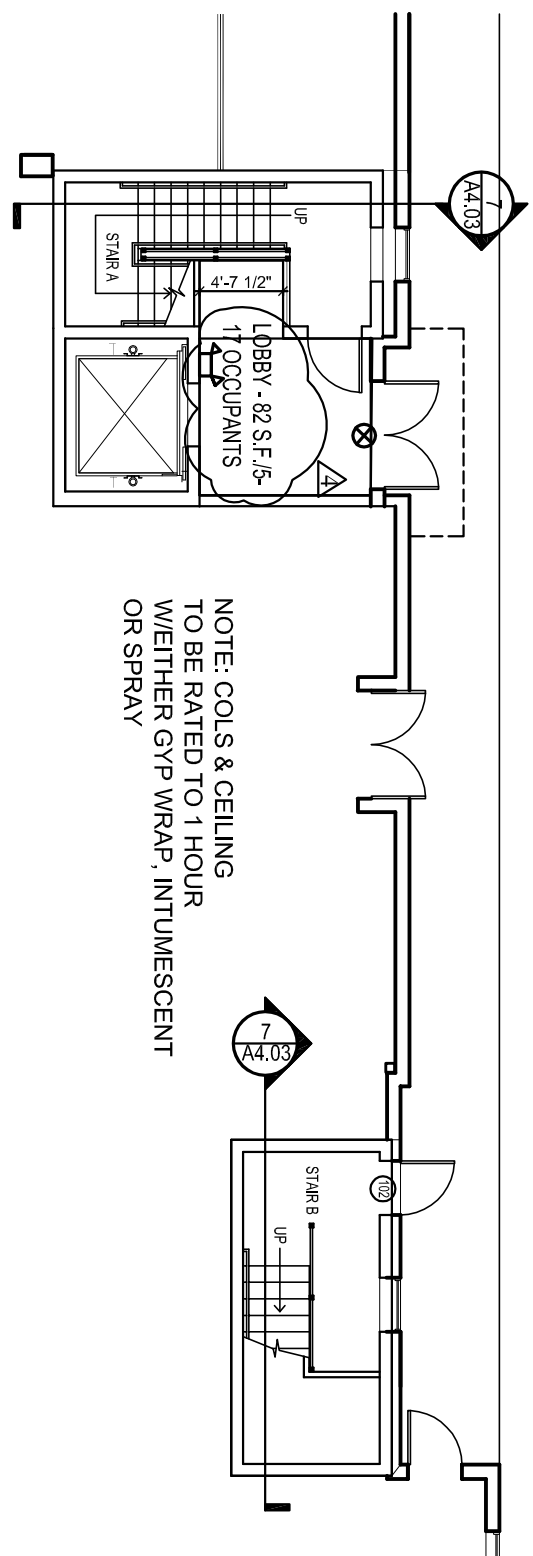


2 | THIRD FLOOR LIFE SAFETY PLAN
SCALE: 3/32"=1'-0"



1 | SECOND FLOOR LIFE SAFETY PLAN
SCALE: 3/32"=1'-0"



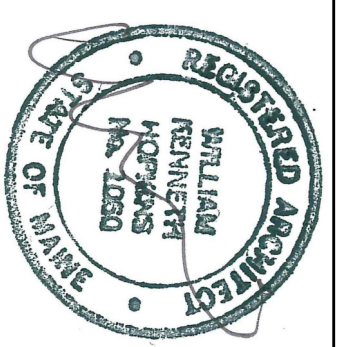
1 | FIRST FLOOR LIFE SAFETY PLAN
SCALE: 3/32"=1'-0"

CODE ANALYSIS IBC 2009, NFPA 101 2009

- ASSEMBLY OCCUPANCY A-3
- BUILDING IS CURRENTLY SPRINKLERED PER NFPA 13
- CONSTRUCTION TYPE 5A IBC, V-111 NFPA PROTECTED/COMBUSTIBLE MATERIALS
- 1 HOUR RATED FLOOR, FRAME, AND ROOF
- 1 HOUR STAIR RATING
- ALLOWABLE HOT AND AREA
- 2 STORIES + 1 STORY W/ SPRINKLER
- ALLOWABLE AREA W/ SPRINKLER MODIFICATION = 11,500 SF
- EXISTING AREA = 9409 +/- SF
- 2 LEVELS ABOVE LED, V-111 ANY ASSEMBLY
- TRAVEL DISTANCE IN SPRINKLED A-3 NO GREATER THAN 250'
- PANIC AND FIRE EXIT HARDWARE
- A- OCCUPANT LOAD OF 50 OR MORE, NO LOCK UNLESS PANIC HARDWARE OR FIRE EXIT HARDWARE, DOORS TO SWING DIRECTION OF EGRESS
- INTERIOR FINISHES - IN SPRINKLED
- EXIT ENCLOSURES AND PASSAGES & CORRIDORS - FLAME SPREAD INDEX B
- ROOMS AND ENCLOSURES - INDEX C
- .3" PER OCCUPANT FOR STAIRS
- EGRESS WIDTH = 88"
- 88"/.3 = 293 OCCUPANTS PER STORY
- MUSEUM NET 30 PER SF, OCCUPANCY
- OCCUPANCY CALC:
- IBC 2009 - ASSEMBLY 15 S.F. PP (NO SPECIFIC MUSEUM OCCUPANCY YET)
- FIRST FLOOR - 17 OCCUPANTS
- SECOND FLOOR - 338 OCCUPANTS
- THIRD FLOOR - 200 OCCUPANTS
- TOTAL - 555 OCCUPANTS
- IBC 2012 - MUSEUM 30 S.F. PP
- FIRST FLOOR - 17 OCCUPANTS
- SECOND FLOOR - 198 OCCUPANTS
- THIRD FLOOR - 200 OCCUPANTS
- TOTAL - 415 OCCUPANTS
- SEE SEPARATE SUBMISSION BY FIRE RISK MANAGEMENT FOR EXIT ACCESS STAIR ANALYSIS
- PLUMBING CODE:
- MEN - 200 - 2 TOILETS, 2 URINALS, 1 LAVS
- WOMEN - 200 - 8 TOILETS, 1 LAVS
- IBC:
- MEN - 200 - 2 TOILETS, 1 URINALS, 1 LAVS
- WOMEN - 200 - 3 TOILETS, 1 LAVS
- PROPOSED COUNT:
- MEN'S ROOM - 2 TOILETS 2 URINALS, 2 LAVS
- WOMEN'S ROOM - 5 TOILETS 2 LAVS
- UNISEX - 1 TOILET, 1 LAV
- IBG T503
- NFPA 112.1.6
- IBC 1028.7
- IBC 1008.1.10
- IBC 1008.1.10
- IBC 803.9
- IBC 1005.1
- IBC 2012

DRAWING LIST

- A1.00 - LIFE SAFETY PLANS
- A1.01 - EXISTING & DEMO PLANS
- A1.02 - FLOOR PLANS & ELEVATIONS & DOOR SCHEDULE
- A1.03 - FLOOR FINISH PLANS & RCPS
- A4.01 - DETAILS
- A4.02 - EXIT ACCESS STAIR DETAILS
- A4.03 - STAIR DETAILS
- A4.04 - STAIR LIGHTING
- A5.01 - INTERIOR ELEVATIONS
- M-1 - HVAC AND PLUMBING PLANS
- M-2 - HVAC AND PLUMBING PLANS
- M-3 - NOT USED
- M-4 - SCHEDULES
- LS-1 - ELECTRICAL LIFE SAFETY PLAN



Prepared For:
MAINE WHARF LLC
72 COMMERCIAL STREET
PORTLAND, ME 04101

Consultant:

Architect:
ARCHETYPE
48 Union Wharf Portland, Maine 04101
(207) 772-6022 Fax (207) 772-4056

Project:
BUILDING A - MAINE WHARF
INTERIOR FIT-UP
PORTLAND SCIENCE CENTER
MAINE WHARF,
PORTLAND ME

Revisions:
5-13-2015 Permit Submission
6-16-2015 rev. Permit Submission
6-18-2015 Construction Set
7-1-2015 rev. Permit Submission
7-8-15 Response to Bartlett memo
7-10-15 Response to Building Inspections

Scale:
3/32" = 1'-0"

Date:
5-13-2015
LIFE SAFETY PLANS

A1.00