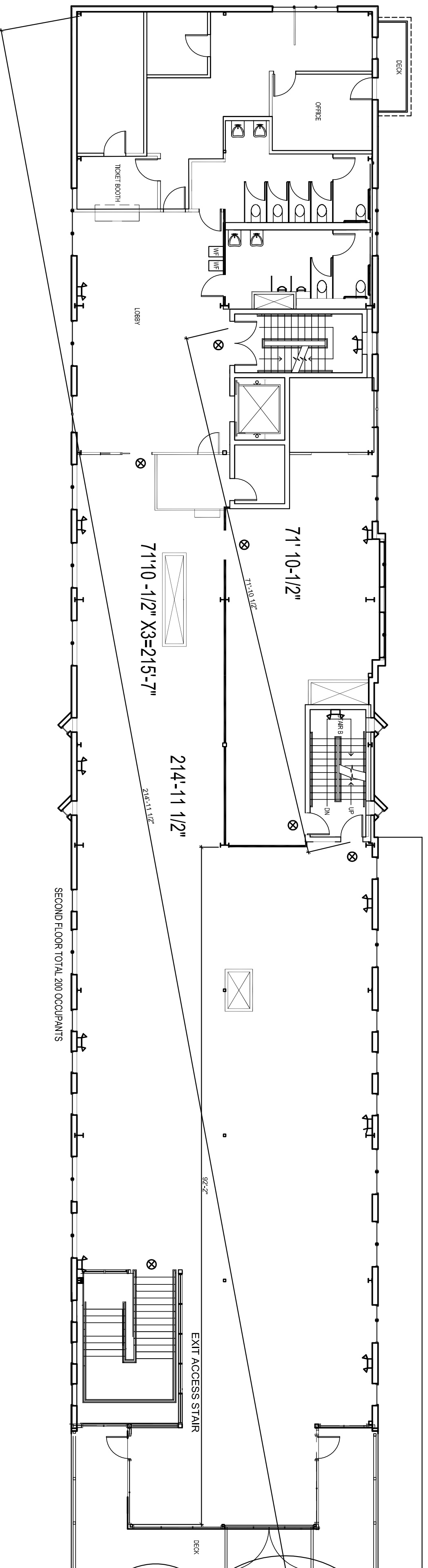
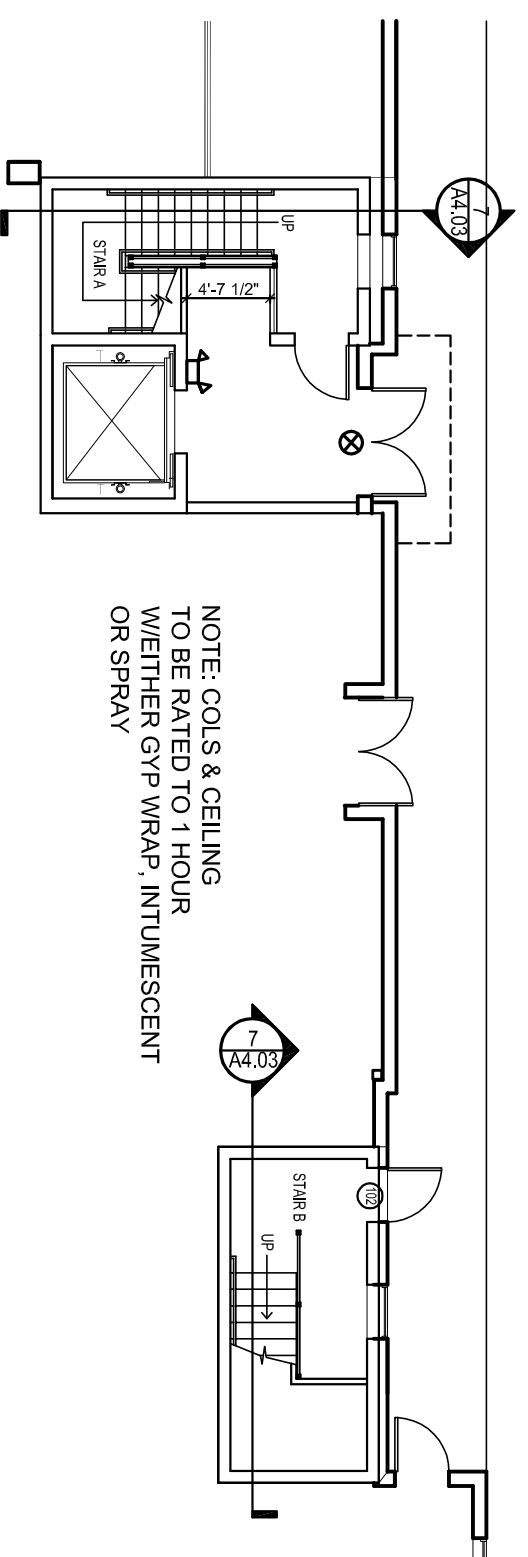


2 | THIRD FLOOR LIFE SAFETY PLAN  
SCALE: 3/32"=1'-0"



1 | SECOND FLOOR LIFE SAFETY PLAN  
SCALE: 3/32"=1'-0"



1 | FIRST FLOOR LIFE SAFETY PLAN  
SCALE: 3/32"=1'-0"

**CODE ANALYSIS IBC 2009, NFPA 101 2009**

ASSEMBLY OCCUPANCY A-3  
BUILDING IS CURRENTLY SPRINKLERED PER NFPA 13  
CONSTRUCTION TYPE SA IBC, V-111 NFPA PROTECTED/COMBUSTIBLE MATERIALS  
1 HOUR RATED FLOOR, FRAME, AND ROOF  
1 HOUR STAIR RATING  
ALLOWABLE HGT AND AREA  
2 STORIES + 1 STORY W/ SPRINKLER  
ALLOWABLE AREA W/O SPRINKLER MODIFICATION = 11,500 SF  
EXISTING AREA = 9409 +/- SF

2 LEVELS ABOVE LED, V-111 ANY ASSEMBLY  
TRAVEL DISTANCE IN SPRINKLED A-3 NO GREATER THAN 250'  
NFPA T12.1.6  
IBC 1028.7

PANIC AND FIRE EXIT HARDWARE  
A- OCCUPANT LOAD OF 50 OR MORE- NO LOCK UNLESS PANIC HARDWARE OR FIRE  
EXIT HARDWARE. DOORS TO SWING DIRECTION OF EGRESS  
IBC 1008.1.10

INTERIOR FINISHES - IN SPRINKLED  
EXIT ENCLOSURES AND PASSAGES & CORRIDORS - FLAME SPREAD INDEX B  
ROOMS AND ENCLOSURES - INDEX C  
IBC 803.9

.3" PER OCCUPANT FOR STAIRS  
EGRESS WIDTH = 88"  
88"/3 = 293 OCCUPANTS PER STORY  
IBC 1005.1

MUSEUM NET 30 PER SF. OCCUPANCY  
IBC 2012

SECOND FLOOR OCCUPANCY TOTAL = 200  
THIRD FLOOR OCCUPANCY TOTAL = 200  
TOTAL OCCUPANCY = 400

SEE SEPARATE SUBMISSION BY FIRE RISK MANAGEMENT FOR EXIT ACCESS STAIR ANALYSIS

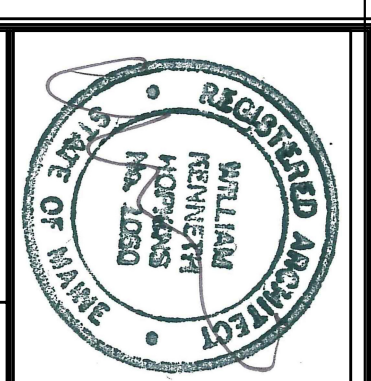
**PLUMBING CODE:**

MEN- 200 - 2 TOILETS, 2 URINALS, 1 LAVS  
WOMEN- 200 - 8 TOILETS, 1 LAVS

IBC:  
MEN - 200 - 2 TOILETS, 1 URINAL, 1 LAVS  
WOMEN - 200 - 3 TOILETS, 1 LAVS

**DRAWING LIST**

- A1.00 - LIFE SAFETY PLANS
- A1.01 - EXISTING & DEMO PLANS
- A1.02 - FLOOR PLANS & ELEVATIONS & DOOR SCHEDULE
- A1.03 - FLOOR FINISH PLANS & RCPS
- A4.01 - DETAILS
- A4.02 - EXIT ACCESS STAIR DETAILS
- A4.03 - STAIR DETAILS
- A4.04 - STAIR LIGHTING
- A5.01 - INTERIOR ELEVATIONS
- M-1 - HVAC AND PLUMBING PLANS
- M-2 - HVAC AND PLUMBING PLANS
- M-3 - NOT USED
- M-4 - SCHEDULES
- LS-1 - ELECTRICAL LIFE SAFETY PLAN



Prepared For:  
**MAINE WHARF LLC**  
72 COMMERCIAL STREET  
PORTLAND, ME 04101

Consultant:  
**ARCHETYPE**  
48 Union Wharf Portland, Maine 04101  
(207) 772-6022 Fax (207) 772-4056

Architect:  
**ARCHETYPE**  
48 Union Wharf Portland, Maine 04101  
(207) 772-6022 Fax (207) 772-4056

Project:  
**BUILDING A - MAINE WHARF  
INTERIOR FIT-UP  
PORTLAND SCIENCE CENTER**  
MAINE WHARF,  
PORTLAND ME

Revisions:  
5-13-2015 Permit Submission  
6-16-2015 rev. Permit Submission  
6-18-2015 Construction Set  
7-1-2015 rev. Permit Submission

Date:  
5-13-2015  
Scale:  
3/32" = 1'-0"

**LIFE SAFETY PLANS**

**A1.00**