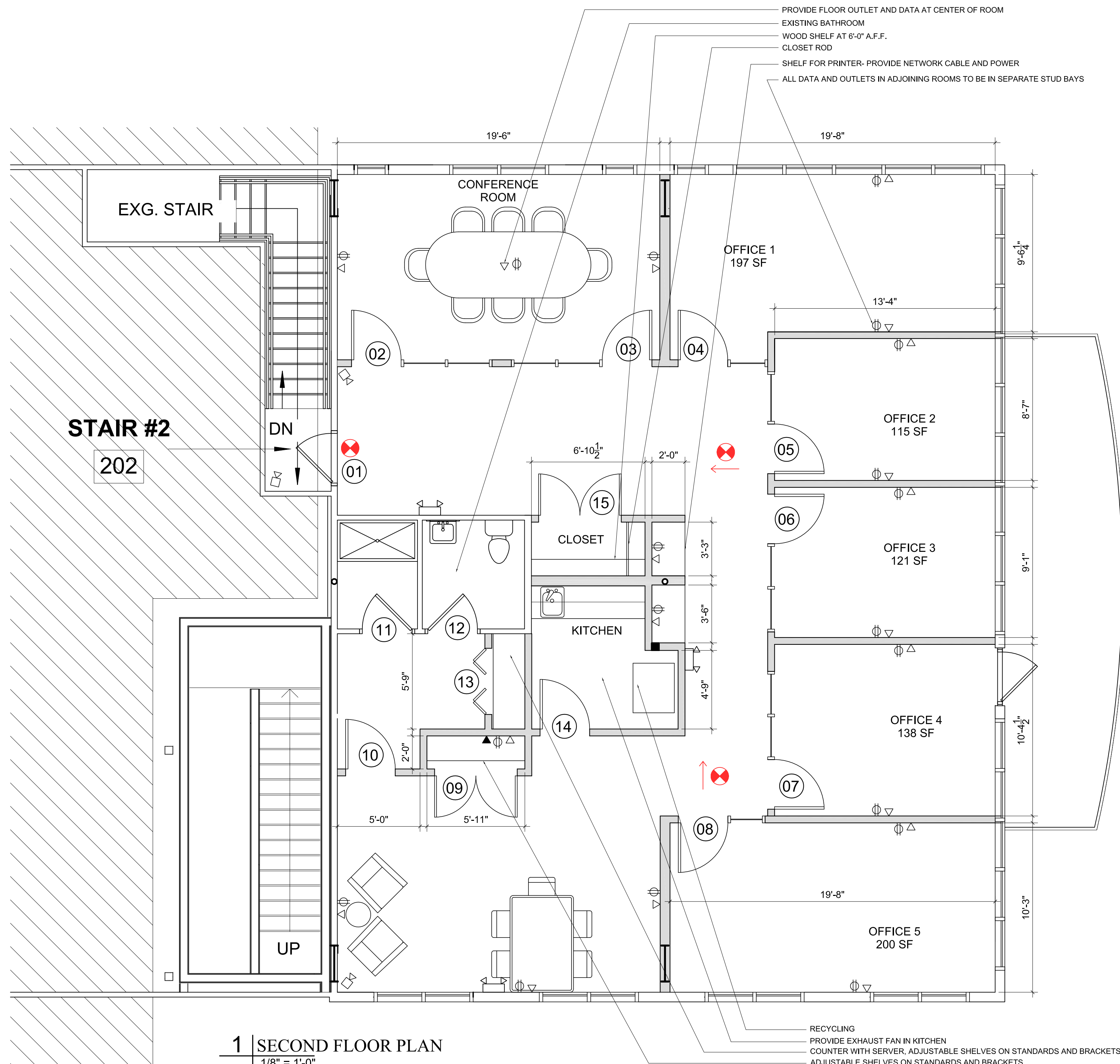
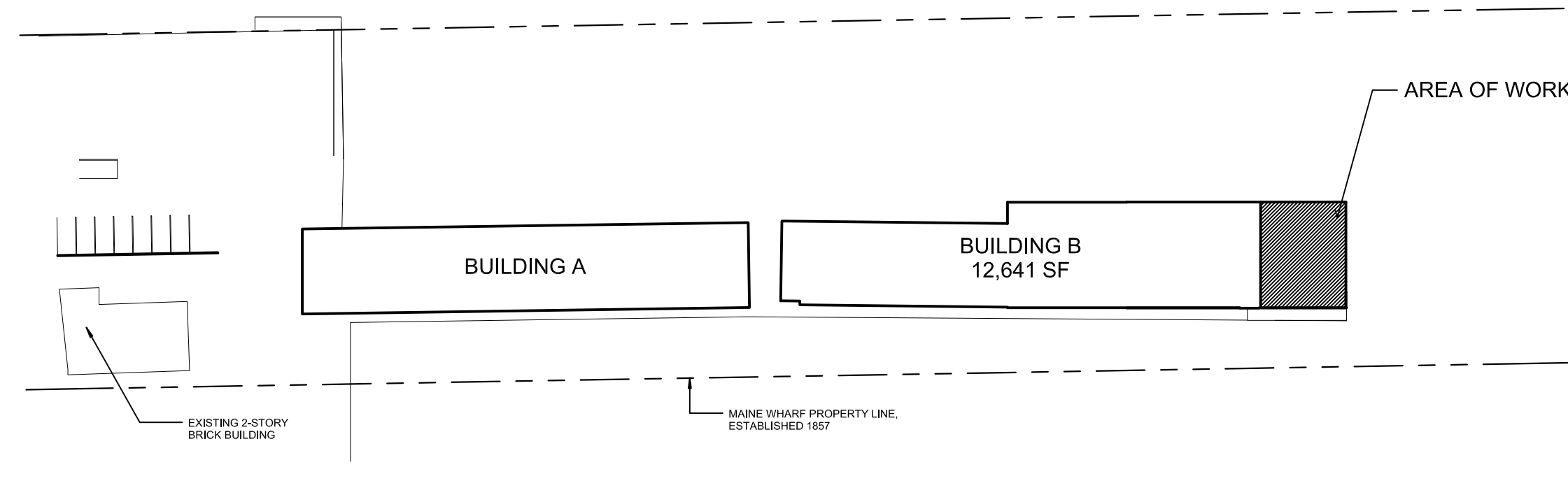
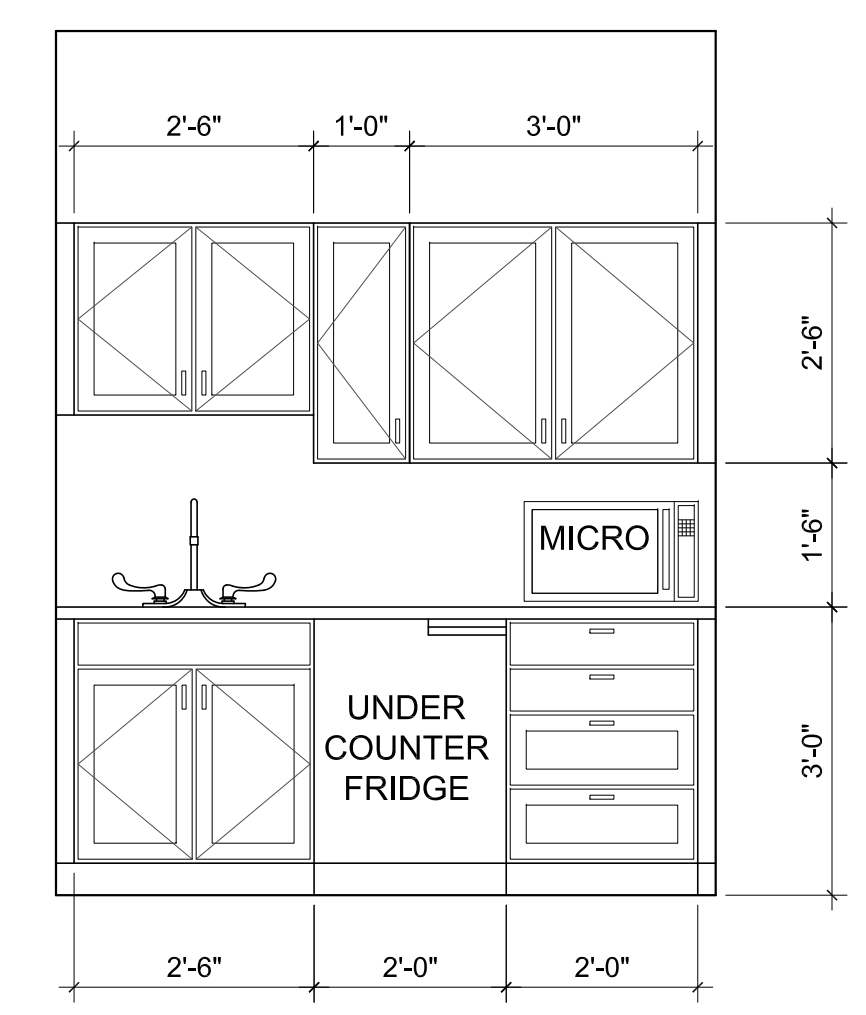
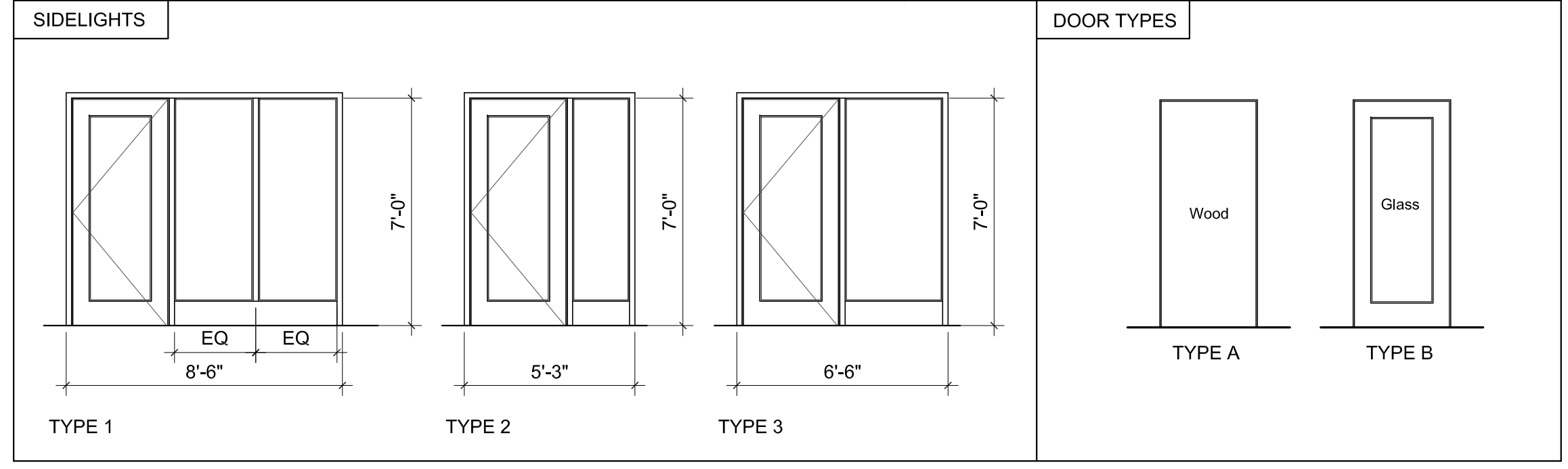


LOCATION MAP NOT TO SCALE



1 SECOND FLOOR PLAN
 1/8" = 1'-0"

DOOR No.	SIZE W x H x T	LOCATION	DOOR		Sidelight	THRESH	FRAME	HARDWARE	DOOR STOP	REMARKS
			Type	Material						
01	3'-0" x 7'-0" x 1'-3/4"	ENTRY DOOR	B	Wood / Glass		METAL	HOLLOW METAL	ENTRY	WALL	NEW DOOR IN EXISTING LOCATION
02	3'-0" x 7'-0" x 1'-3/4"	CONFERENCE	B	Wood / Glass	1	METAL	HOLLOW METAL	PASSAGE	WALL	
03	3'-0" x 7'-0" x 1'-3/4"	CONFERENCE	B	Wood / Glass	1	METAL	HOLLOW METAL	PASSAGE	WALL	
04	3'-0" x 7'-0" x 1'-3/4"	OFFICE 1	B	Wood / Glass	2	METAL	HOLLOW METAL	PASSAGE	WALL	
05	3'-0" x 7'-0" x 1'-3/4"	OFFICE 2	B	Wood / Glass	3	METAL	HOLLOW METAL	PASSAGE	WALL	
06	3'-0" x 7'-0" x 1'-3/4"	OFFICE 3	B	Wood / Glass	1	METAL	HOLLOW METAL	PASSAGE	WALL	
07	3'-0" x 7'-0" x 1'-3/4"	OFFICE 4	B	Wood / Glass	1	METAL	HOLLOW METAL	PASSAGE	WALL	
08	3'-0" x 7'-0" x 1'-3/4"	OFFICE 5	B	Wood / Glass	2	METAL	HOLLOW METAL	PASSAGE	WALL	
09	(2X) 2'-6" x 7'-0" x 1'-3/4"	CLOSET	A	Solid Core		METAL	HOLLOW METAL	STORAGE	WALL	
10	3'-0" x 7'-0" x 1'-3/4"	HALLWAY	A	Solid Core		METAL	HOLLOW METAL	PASSAGE	WALL	
11	EXISTING	EXISTING								
12	EXISTING	EXISTING								
13	(2X) 2'-0" x 7'-0" x 1'-3/4"	CLOSET	A	Solid Core		METAL	HOLLOW METAL	STORAGE		BI-FOLD
14	3'-0" x 7'-0" x 1'-3/4"	HALLWAY	A	Solid Core		METAL	HOLLOW METAL	PASSAGE	WALL	
15	(2X) 2'-6" x 7'-0" x 1'-3/4"	CLOSET	A	Solid Core		METAL	HOLLOW METAL	STORAGE		



KEY

- EXISTING WALL TO REMAIN
- NEW WALL TYPE 1
- DOOR TAG
- CAT 6 DROP/ SECURITY PANEL
- SINGLE DATA DROP
- DUPLEX POWER
- EXIT SIGN

GENERAL NOTES
 ALL DIMENSIONS ARE TO FINISH FACE OF SHEETROCK ALL DIMENSIONS MUST BE FIELD VERIFIED AND ANY ADJUSTMENTS MADE FOR ACTUAL FOUND CONDITIONS.

OCCUPANT LOAD PER T.3.1.2 100sf PER PERSON
 1,980 SF/100 = 20 PEOPLE

BUILDING CLASSIFICATION-EXISTING BUSINESS
 OCCUPANCY

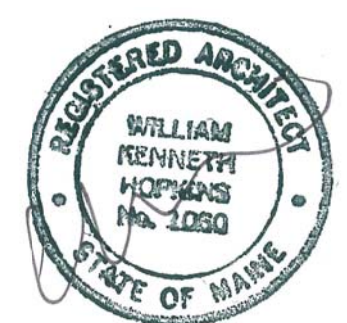
NFPA 101 (2009)
 39.2.4.3 A SINGLE EXIT SHALL BE PERMITTED FOR A ROOM OR AREA WITH A TOTAL OCCUPANT LOAD OF FEWER THAN 100 PERSONS

39.2.5.3.2 COMMON PATH OF TRAVEL SHALL NOT BE LIMITED IN A SINGLE TENANT SPACE WITH OCCUPANT LOAD NOT EXCEEDING 30

39.2.6.2 IN BUILDINGS OTHER THAN THOSE COMPLYING WITH 39.2.6.1 (SPRINKLED BUILDINGS) THE TRAVEL DISTANCE, MEASURED IN ACCORDANCE WITH SECTION 7.6 SHALL NOT EXCEED 200'

39.3.4.1 FIRE ALARM NOT REQUIRED WHEN BUILDING IS 2 OR MORE STORES IN HEIGHT ABOVE LEVEL OF EXIT DISCHARGE, OCCUPANCY IS 100 OR MORE OVER OR UNDER THE LEVEL OF EXIT DISCHARGE, OCCUPANCY OF OVER 100

WALL TYPE 1
 One Layer 5/8" Gypsum Board on each side of 3-5/8" steel stud spaced at 24" on center. Provide Fiberglass sound insulation. At wet wall use 6" metal stud in lieu of 3-5/8" Partition to terminate above ceiling



Prepared For:
MAINE WHARF LLC
 72 COMMERCIAL STREET
 PORTLAND, ME 04101

Consultant:
ARCHETYPE, P.A. ARCHITECTS
 48 Union Wharf Portland, Maine 04101
 (207) 772-6022 Fax (207) 772-4056

Project:
MAINE WHARF OFFICE RENOVATION BUILDING B
 68 COMMERCIAL STREET, PORTLAND ME

Revisions:
 REVISIONS

Date: 13 May 2015
 Scale: As indicated
MAGNA CARTA OFFICE BUILD OUT

A1.01