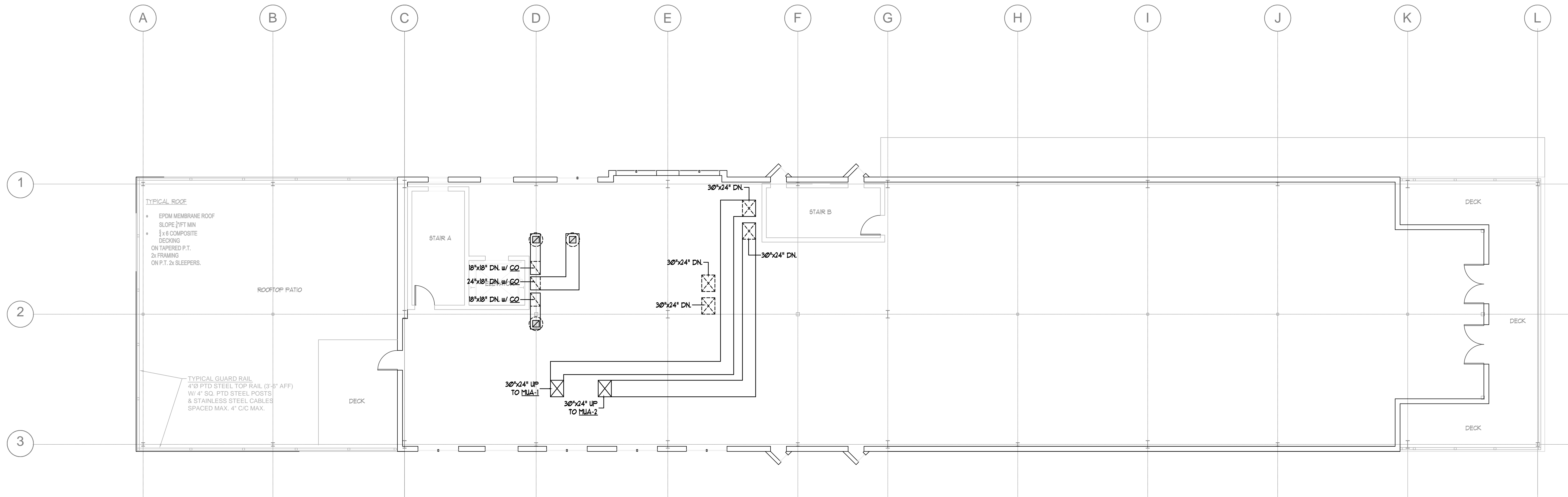


- General Mechanical Notes**
1. Locate plumbing vents a minimum of 30'-0" from outside air intake openings.
 2. Locate exhaust fan vents a minimum of 10'-0" from outside air intake openings.
 3. The Electrical Contractor shall provide duct smoke detectors for each air handling system, connected to the Building Fire Alarm system.

ROOF PLAN



- General Mechanical Notes**
1. Locate plumbing vents a minimum of 30'-0" from outside air intake openings.
 2. Locate exhaust fan vents a minimum of 10'-0" from outside air intake openings.
 3. The Electrical Contractor shall provide duct smoke detectors for each air handling system, connected to the Building Fire Alarm system.

Third Floor Plan

PROGRESS PRINT
NOT FOR CONSTRUCTION

Prepared For:
MAINE WHARF LLC
72 COMMERCIAL STREET
PORTLAND, ME 04101

Consulting Engineer:
BENNETT ENGINEERING
MECHANICAL - ELECTRICAL
CONTRACTORS

Architect:
ARCHETYPE architects
48 Union Wharf Portland, Maine 04101
(207) 772-6022 Fax (207) 772-4056

Project:
MAINE WHARF
68 COMMERCIAL STREET
PORTLAND, MAINE

Revisions:

Scale: 1/8" = 1'-0" or
As Noted

Date:

**Tenant Fit-Up
HVAC 3rd Floor Plan
and Roof Plan**

M.5