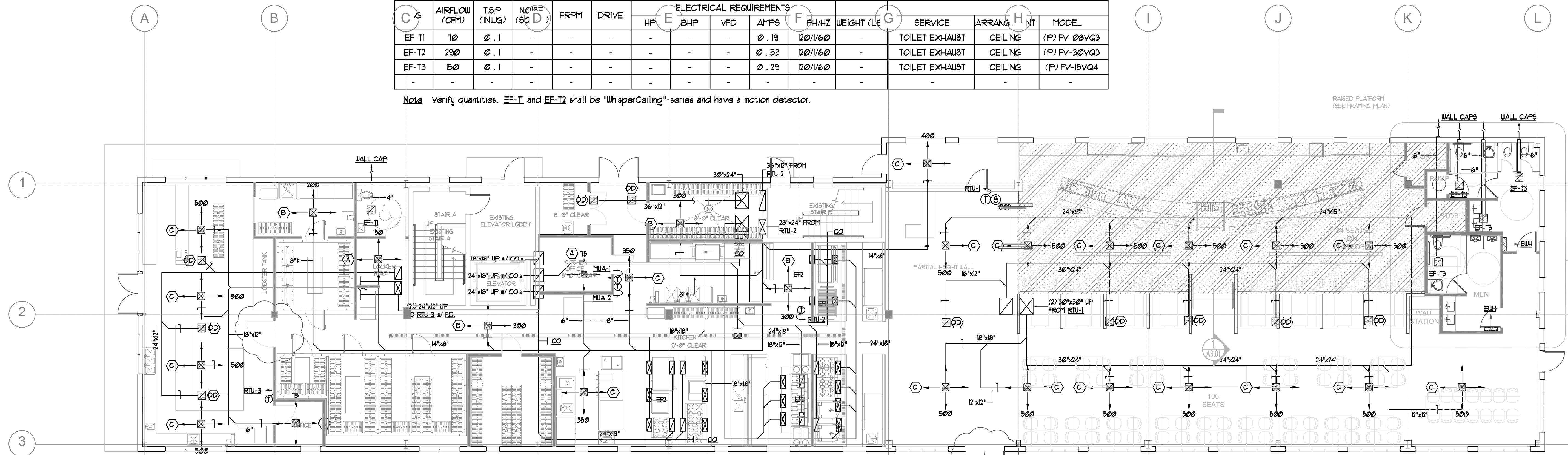


Second Floor Plan

General Mechanical Notes
 1. Locate plumbing vents a minimum of 30'-0" from outside air intakes openings.
 2. Locate exhaust fan vents a minimum of 10'-0" from outside air intakes openings.
 3. The Electrical Contractor shall provide duct smoke detectors for each air handling system, connected to the Building Fire Alarm system.

FAN PERFORMANCE SCHEDULE										BASIS OF DESIGN (V) VENTAIRE, (G) GREENHECK, (P) PANASONIC						
C 4	AIRFLOW (CFM)	T.S.P (IN.WG.)	NOISE (SC D)	FRPM	DRIVE	ELECTRICAL REQUIREMENTS				F	WEIGHT (LBS)	SERVICE	ARRANG	H	M	MODEL
						HP	E	BHP	VFD							
EF-T1	70	0.1	-	-	-	-	-	-	0.19	120/1/60	-	TOILET EXHAUST	CEILING	(P)	FV-08VQ3	
EF-T2	290	0.1	-	-	-	-	-	-	0.53	120/1/60	-	TOILET EXHAUST	CEILING	(P)	FV-30VQ3	
EF-T3	150	0.1	-	-	-	-	-	-	0.29	120/1/60	-	TOILET EXHAUST	CEILING	(P)	FV-15VQ4	

Note: Verify quantities. EF-T1 and EF-T2 shall be "WhisperCeiling" series and have a motion detector.



1 FIRST FLOOR FIT UP PLAN
 1/8" = 1'-0"

General Mechanical Notes
 1. Coordinate the mechanical systems with the kitchen equipment and shop drawings.
 2. All kitchen hood exhaust ducts shall have two (2) layers of 1 1/2" thick Fyrnolap XL ceramic insulation.
 3. Kitchen hood exhaust ducts shall be constructed of 16 gauge welded black carbon steel with bolted and gasketed cleanouts per NFPA36.
 4. All 90 degree elbows shall have angle thickness mitered turning vanes or be radiused with a 4 radius of 1.5 times the duct width.
 5. All take-offs (taps) to grilles, registers and diffusers shall have a 45 degree entrance and manual volume damper with locking quadrant.

PROGRESS PRINT
 NOT FOR CONSTRUCTION

Prepared For:
MAINE WHARF LLC
 72 COMMERCIAL STREET
 PORTLAND, ME 04101

Consulting Engineer:
BENNETT ENGINEERING
 MECHANICAL-ELECTRICAL
 607/868646

Architect:
ARCHETYPE architects
 48 Union Wharf Portland, Maine 04101
 (207) 772-6022 Fax (207) 772-4056

Project:
MAINE WHARF
 68 COMMERCIAL STREET
 PORTLAND, MAINE

Revisions:

Date:
 Scale: 1/8" = 1'-0" or As Noted
**First Floor Tenant Fit-up
 HVAC First and
 Second Floor Plan**

M.4