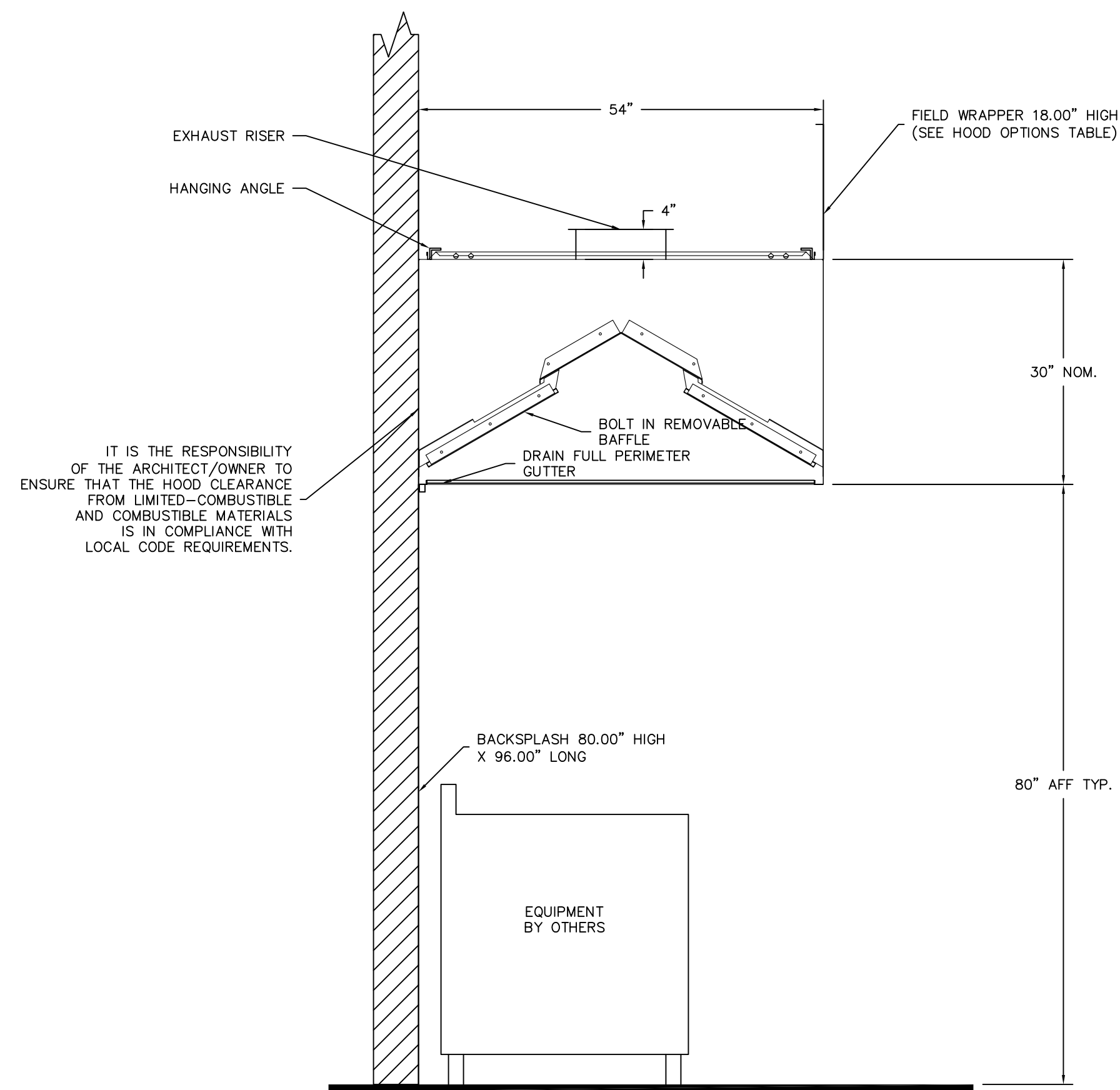
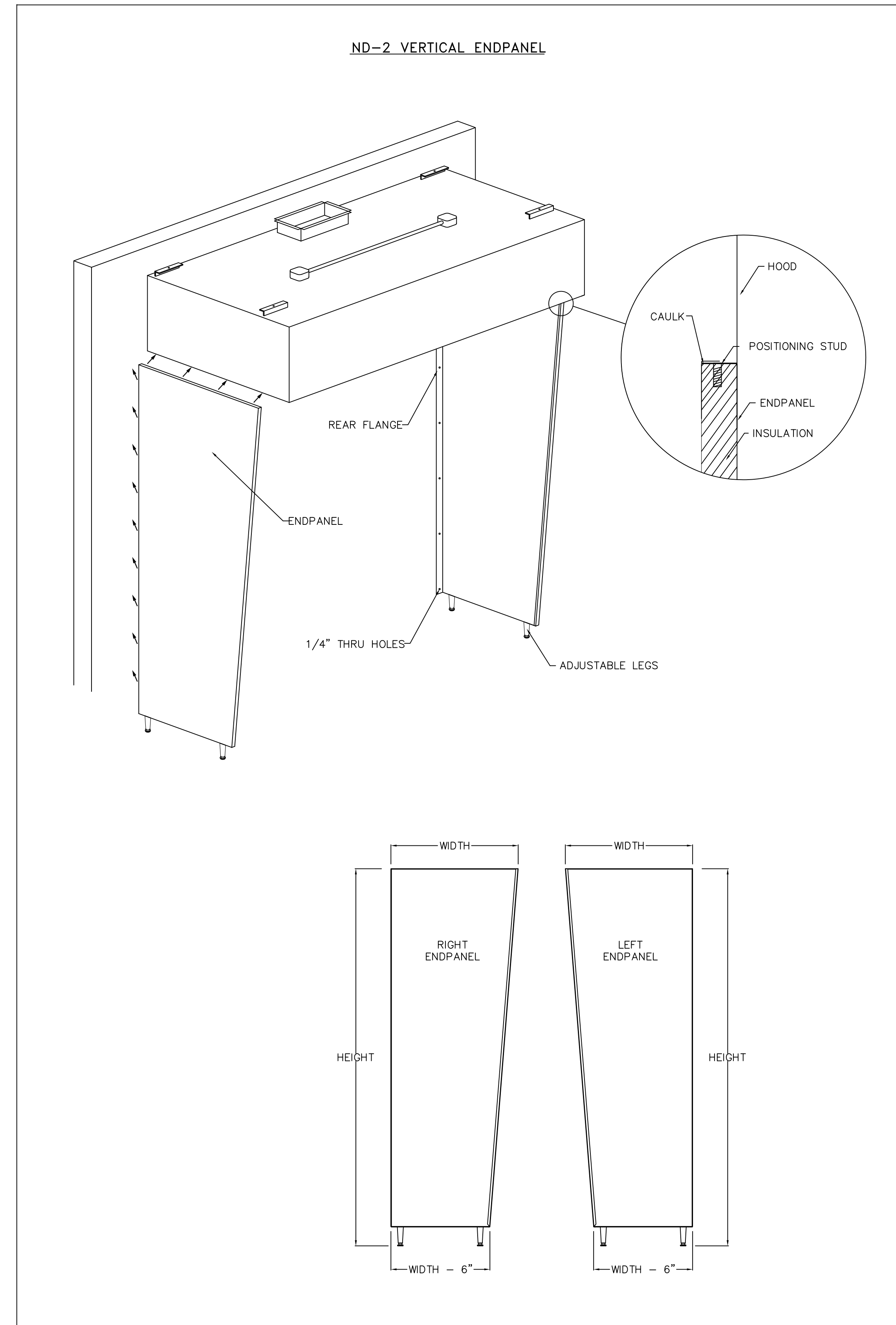


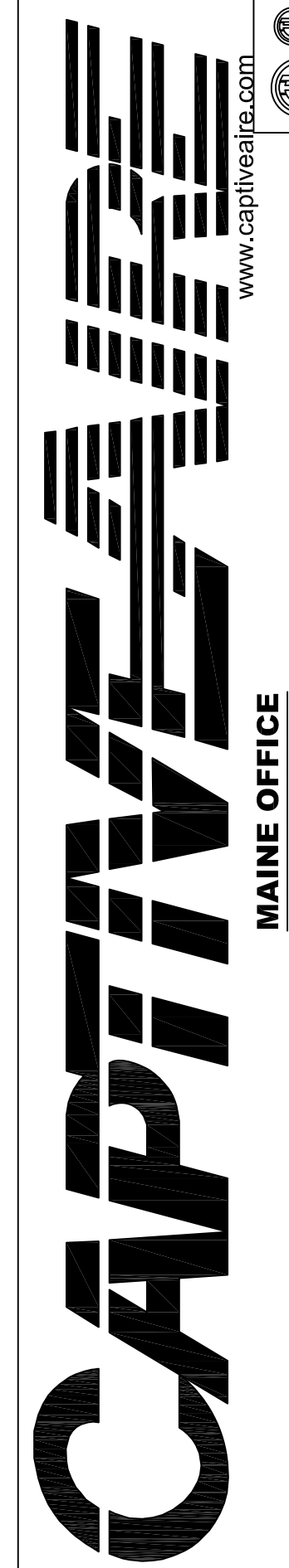
PLAN VIEW - Hood #7 (DISH)
8' 0.00" LONG 54.30VHB-G-REM



SECTION VIEW - MODEL 54.30VHB-G-REM
HOOD - #7 (DISH)



REVISIONS		
DESCRIPTION	DATE	



MAINE OFFICE

PO Box 86, 179 South Rd., Topsfield, ME, 04490 PHONE: (207) 796-2590 FAX: (819) 227-6946 EMAIL: reg21@captiveme.com

Maine Wharf Restaurant
PORTLAND, ME

DATE: 12/18/2013
DWG.#: 1934403
DRAWN BY: BFC-21
SCALE: 3/4" = 1'-0"
MASTER DRAWING

SHEET NO.
7