

PLAN VIEW - Hood #1 (SOLID FUEL)  
6' 8.00" LONG 6630ND-2-PSP-F

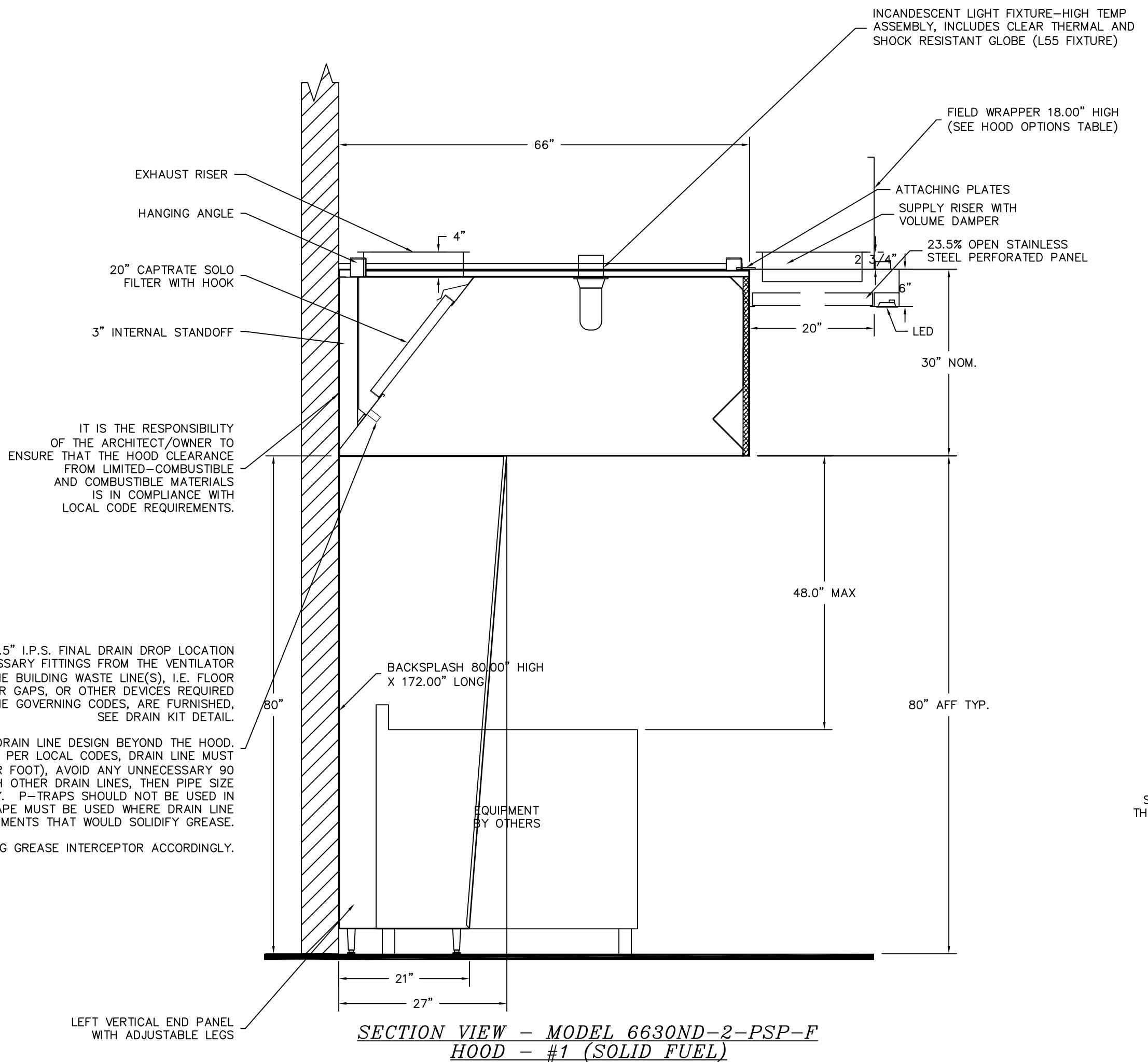
PLAN VIEW - Hood #2 (UPRIGHT BROILERS)  
6' 7.00" LONG 6630ND-2-PSP-F

1" LAYER OF INSULATION FACTORY INSTALLED IN 1.00" END STANDOFF MEETS 0" REQUIREMENTS CLEARANCE TO COMBUSTIBLE SURFACES.

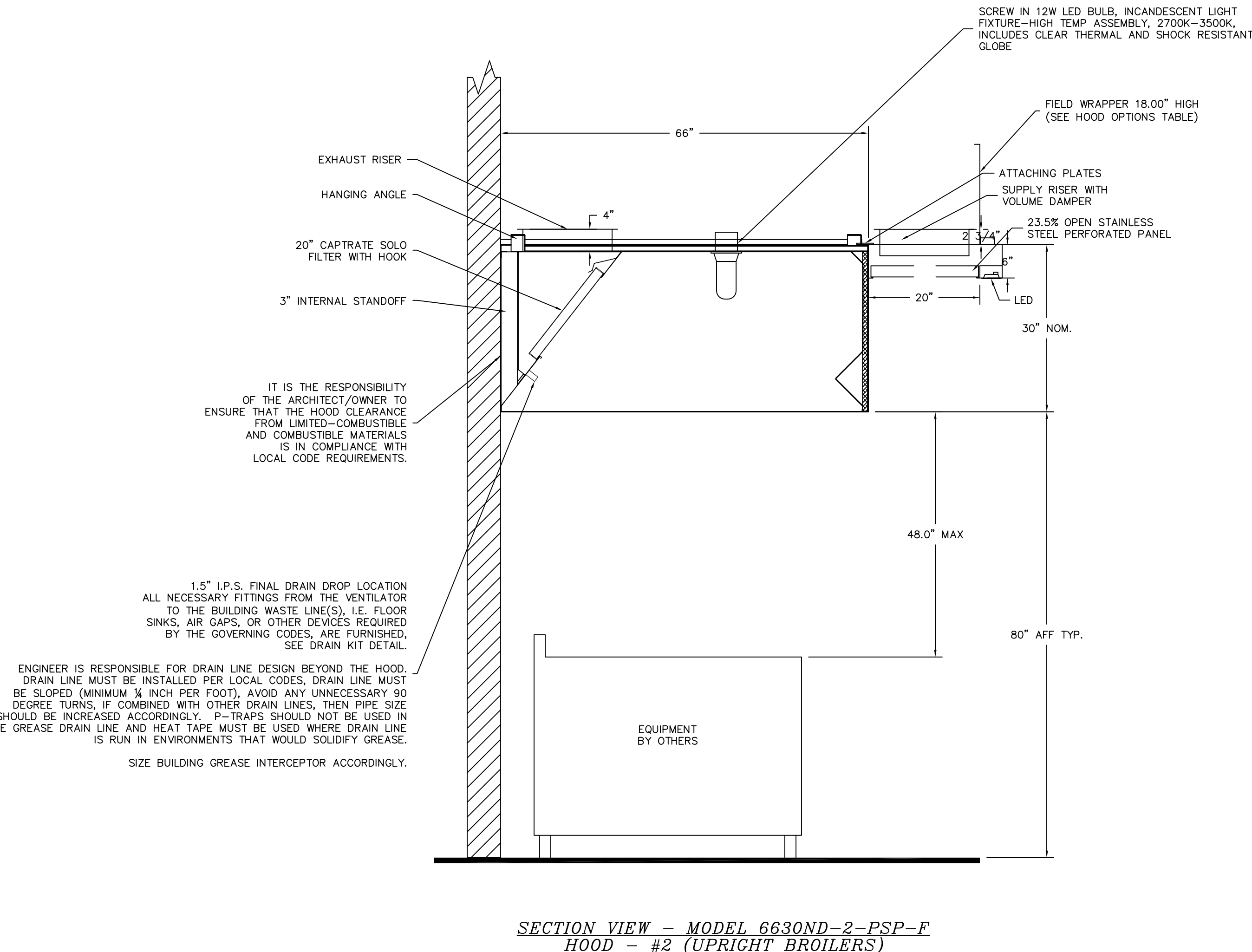
1.5" I.P.S. DRAIN DROP ENGINEER IS RESPONSIBLE FOR DRAIN LINE DESIGN BEYOND THE HOOD. DRAIN LINE MUST BE INSTALLED PER LOCAL CODES, DRAIN LINE MUST BE SLOPED (MINIMUM 1/4" INCH PER FOOT), AVOID ANY UNNECESSARY 90 DEGREE TURNS, IF COMBINED WITH OTHER DRAIN LINES, THEN PIPE SIZE SHOULD BE INCREASED ACCORDINGLY. P-TRAPS SHOULD NOT BE USED IN THE GREASE DRAIN LINE AND HEAT TAPE MUST BE USED WHERE DRAIN LINE IS RUN IN ENVIRONMENTS THAT WOULD SOLIDIFY GREASE. SIZE BUILDING GREASE INTERCEPTOR ACCORDINGLY.

3/4" I.P.S. (N.P.T.) HOT WATER CONNECTION STUBS ARE PREFIT BY FACTORY.

LIGHTING FOR ACSPS Job # 1934403 - Hoods #1, #2  
INPUT: 120V AC, 1 Phase, 50/60Hz, 3.5 Watts per light.  
TO CONTROL LIGHTS WITH HOOD LIGHT SWITCH, WIRE PER HOOD ELECTRICAL CONTROL PANEL SCHEMATIC.  
TO CONTROL LIGHTS WITH BUILDING LIGHT SWITCH, WIRE BLACK AND WHITE WIRE TO A 120VAC SERVICE.  
END TO END ACSPS REQUIRE 120VAC FIELD WIRING FROM J-BOX TO J-BOX. REPLACE LIGHTS WITH LED LIGHTS ONLY.



SECTION VIEW - MODEL 6630ND-2-PSP-F  
HOOD - #1 (SOLID FUEL)



SECTION VIEW - MODEL 6630ND-2-PSP-F  
HOOD - #2 (UPRIGHT BROILERS)

EXHAUST HOOD ITEM # 67

REVISIONS	
DESCRIPTION	DATE

**CAPTIVE**

MAINE OFFICE

www.captiveaia.com

PO Box 66, 179 South Rd., Topshfield, ME 04480 PHONE: (207) 796-2590 FAX: (919) 227-5646 EMAIL: reg21@captiveaia.com

---

Maine Wharf Restaurant  
PORTLAND, ME

DATE: 12/18/2013

DWG.#:  
1934403

DRAWN BY: BFC-21

SCALE:  
3/4" = 1'-0"

MASTER DRAWING

---

SHEET NO.  
2