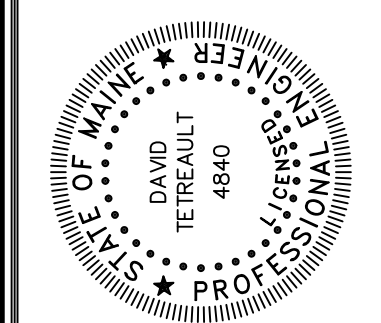
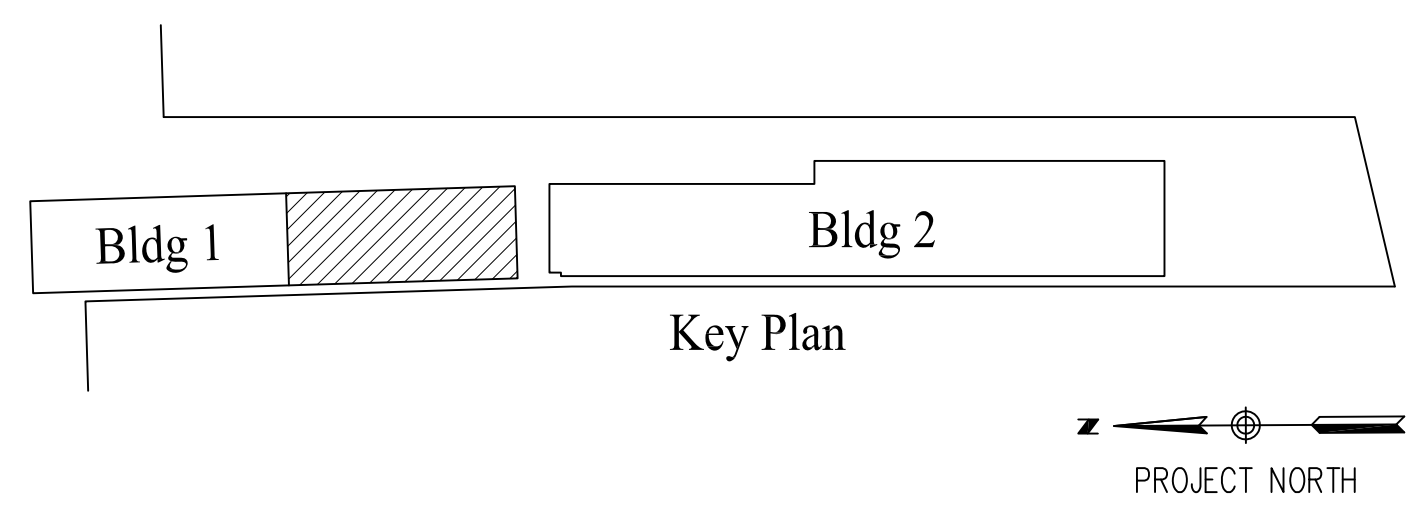


THIRD FLOOR FRAMING PLAN
 1/4"=1'-0"

TOP OF STEEL ELEV = 28'-1" UNLESS NOTED (4x)

FLOOR SLAB IS GALVANIZED, 22 GAGE, 0.6C CSV CONFORM STEEL DECK BY VULCRAFT WITH 2" CONCRETE TOPPING (TOTAL THICKNESS = 2 1/2") WITH 6x6-WI.4xWI.4 W/F LOCATED 1" FROM THE TOP SURFACE.

● INDICATES MOMENT CONNECTION.
 + + INDICATES EXTERIOR DECK.



Prepared For:
MAINE WHARF, LLC
 P.O. Box 535
 BUXTON, ME 04093

Consulting Engineer:
STRUCTURAL DESIGN CONSULTING
 22 Oceanport Drive
 Old Orchard Beach, ME 04064-4121
 Tel: 207.934.8038
 Fax: 207.934.8039

Architect:
ARCHETYPE Architects
 48 Union Wharf Portland, Maine 04101
 (207) 772-6022 Fax (207) 772-4056

Project:
Maine Wharf Building 1 Section C
 68 Commercial Street
 Portland, ME

Revisions:	Phase 3 Permit & Const.	12/12/13

Date: 12 Dec 2013
 Scale: 1/4"=1'-0"
THIRD FLOOR FRAMING PLAN

S3.03