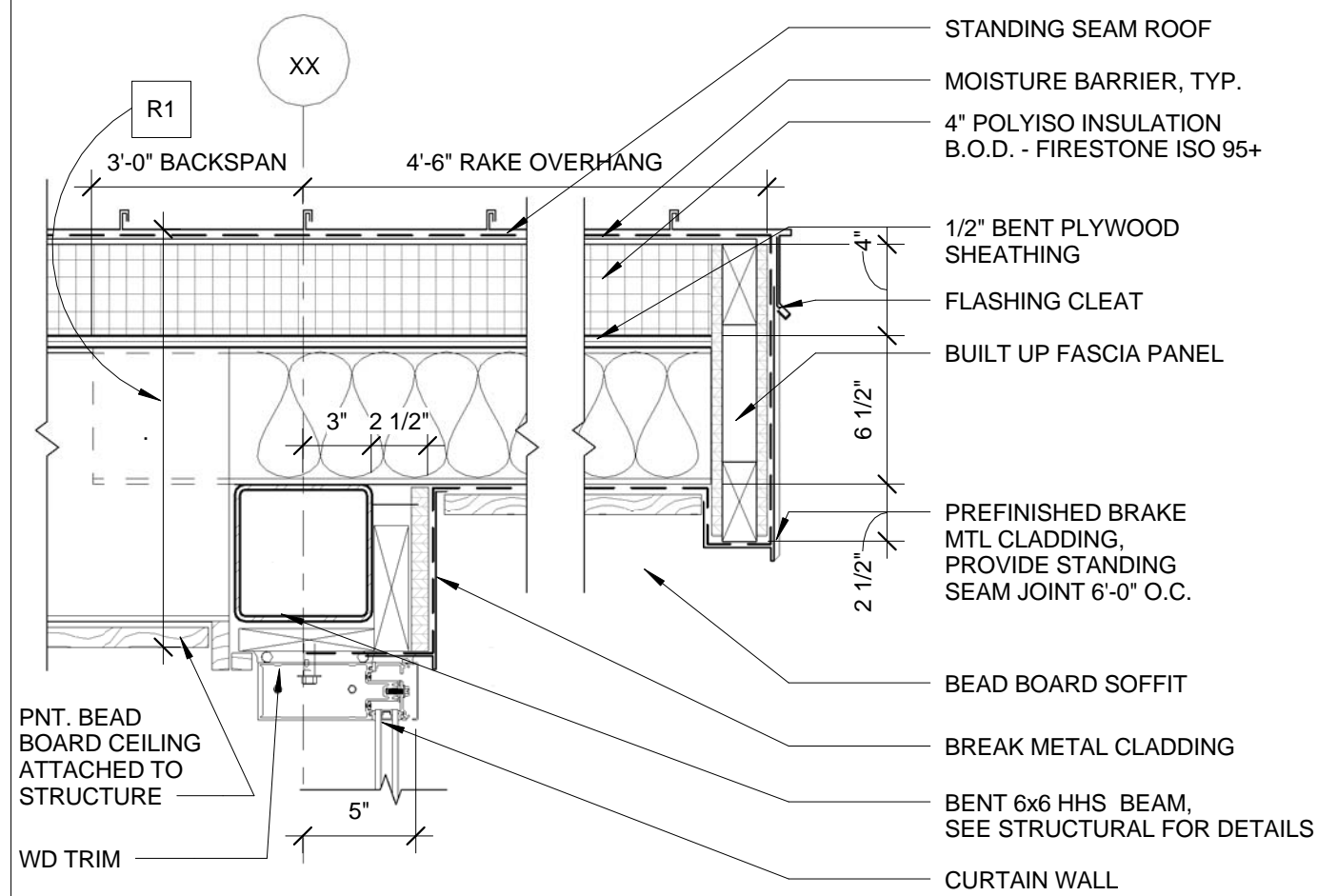
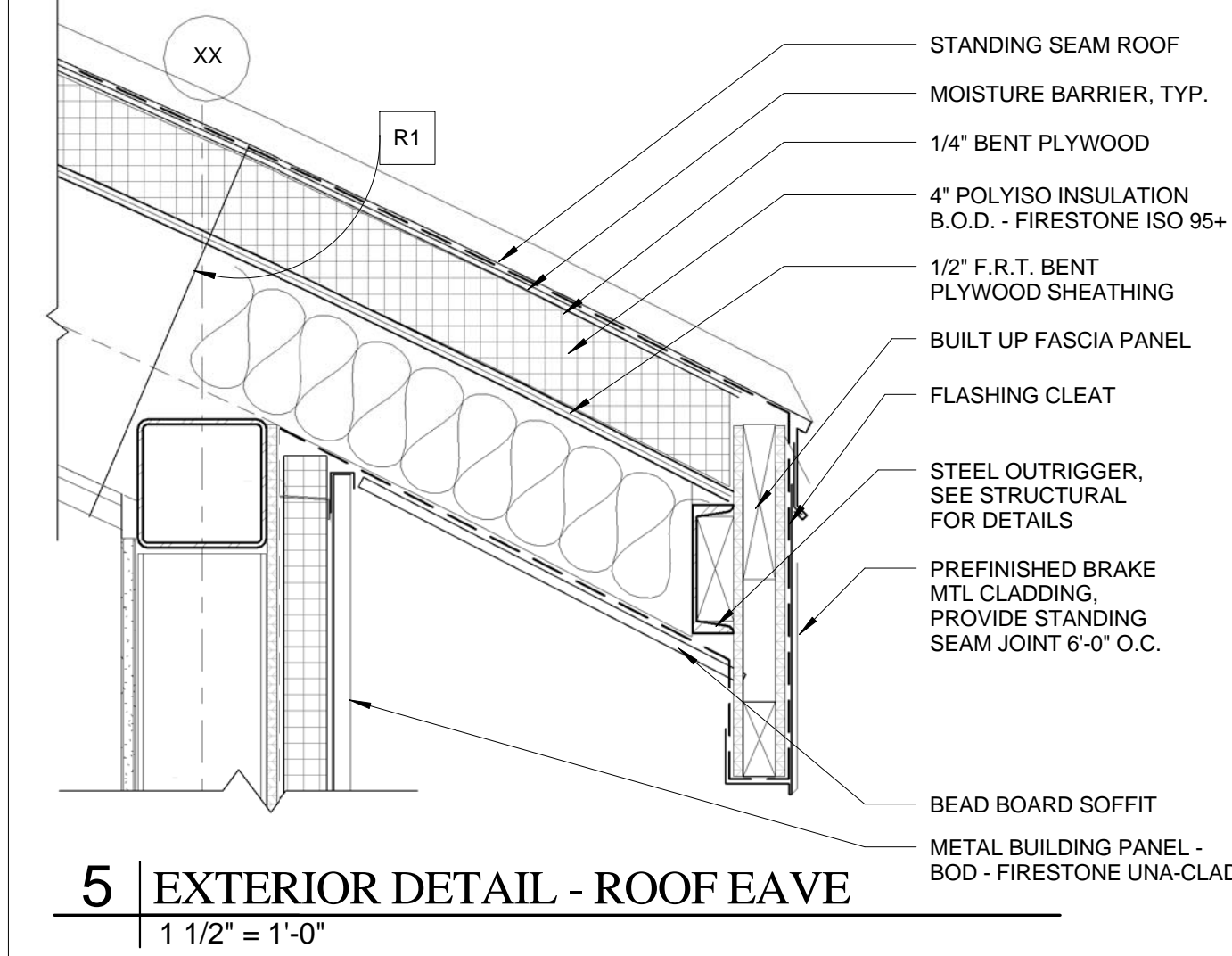


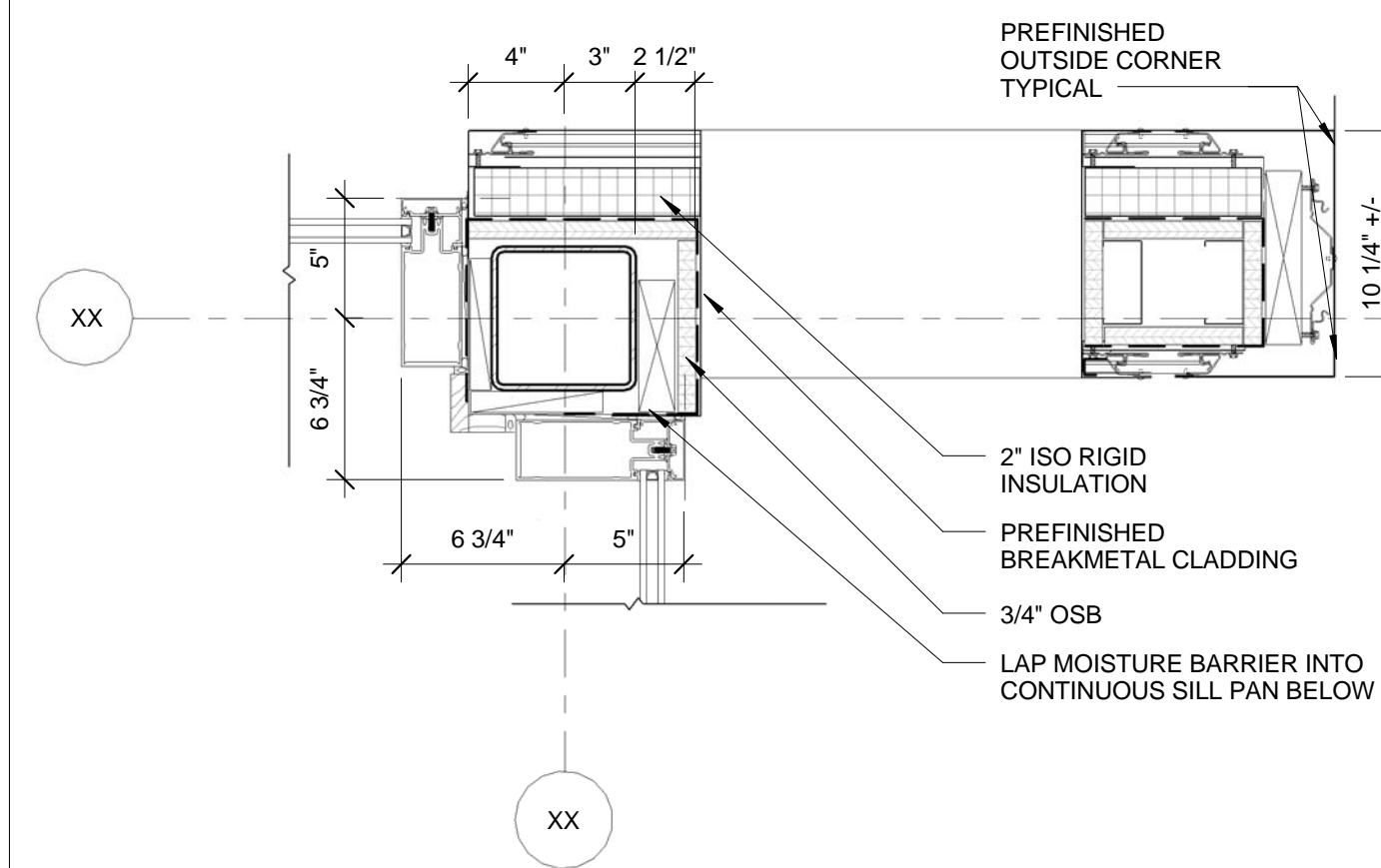
1 | WALL SECTION 1
1/2" = 1'-0"



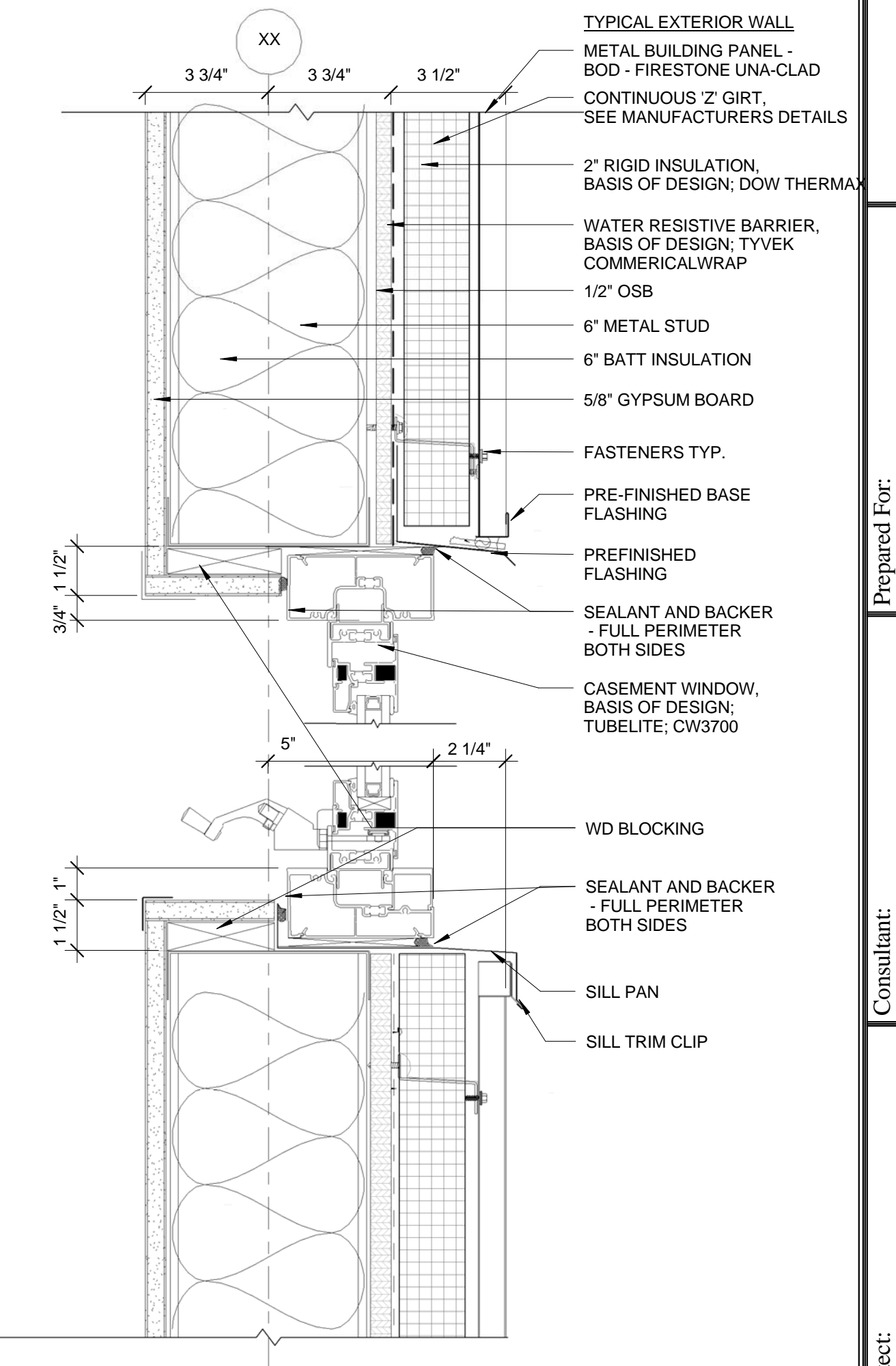
4 | EXTERIOR DETAIL - ROOF RAKE
1 1/2" = 1'-0"



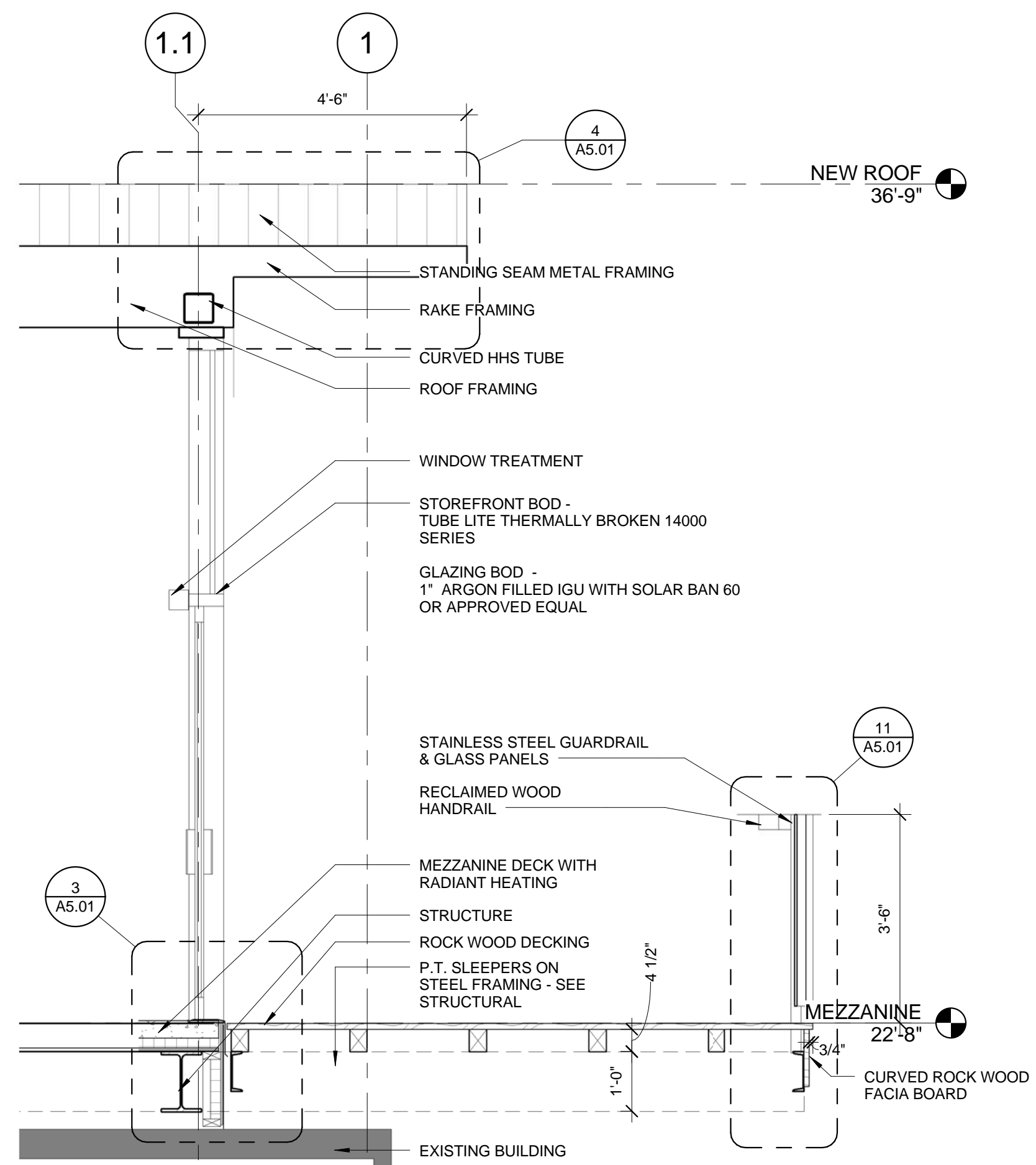
5 | EXTERIOR DETAIL - ROOF EAVE
1 1/2" = 1'-0"



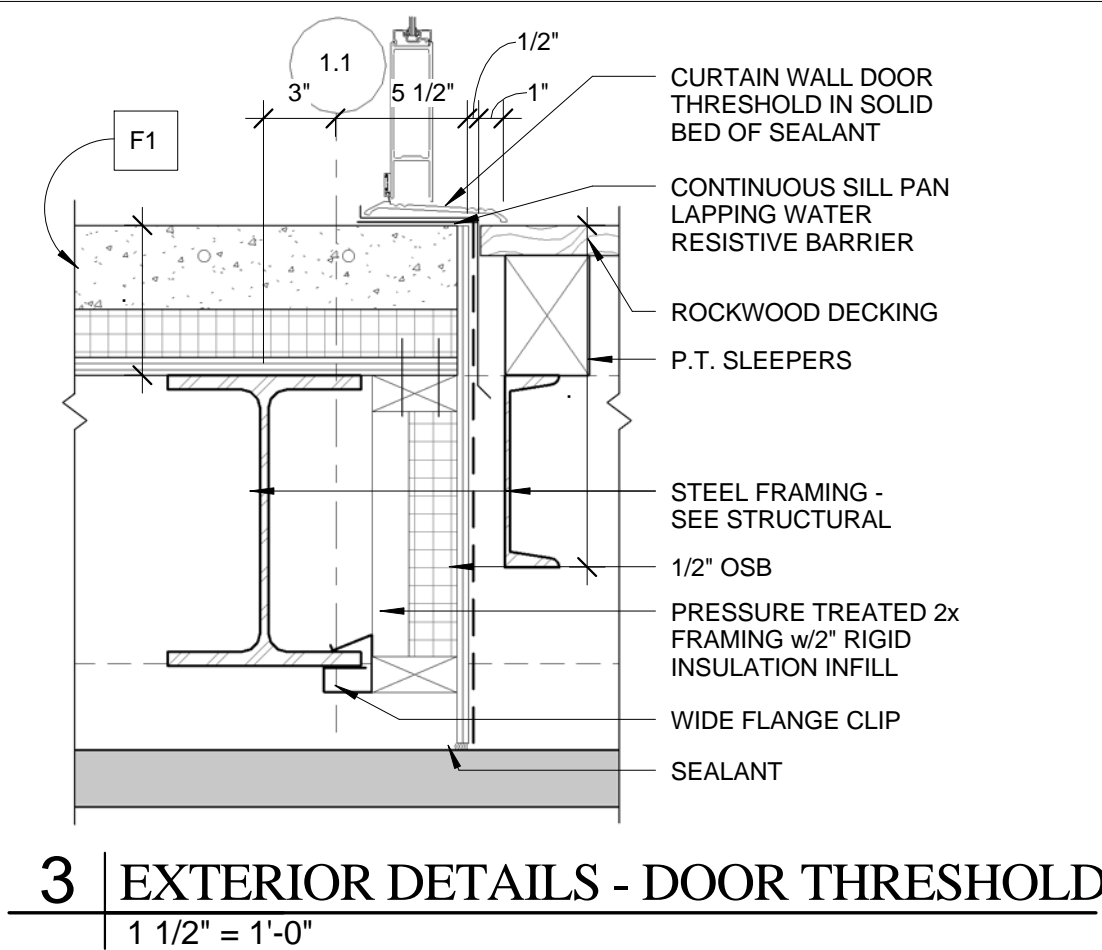
6 | ENVELOP DETAILS - CORNER W/ WING WALL
1 1/2" = 1'-0"



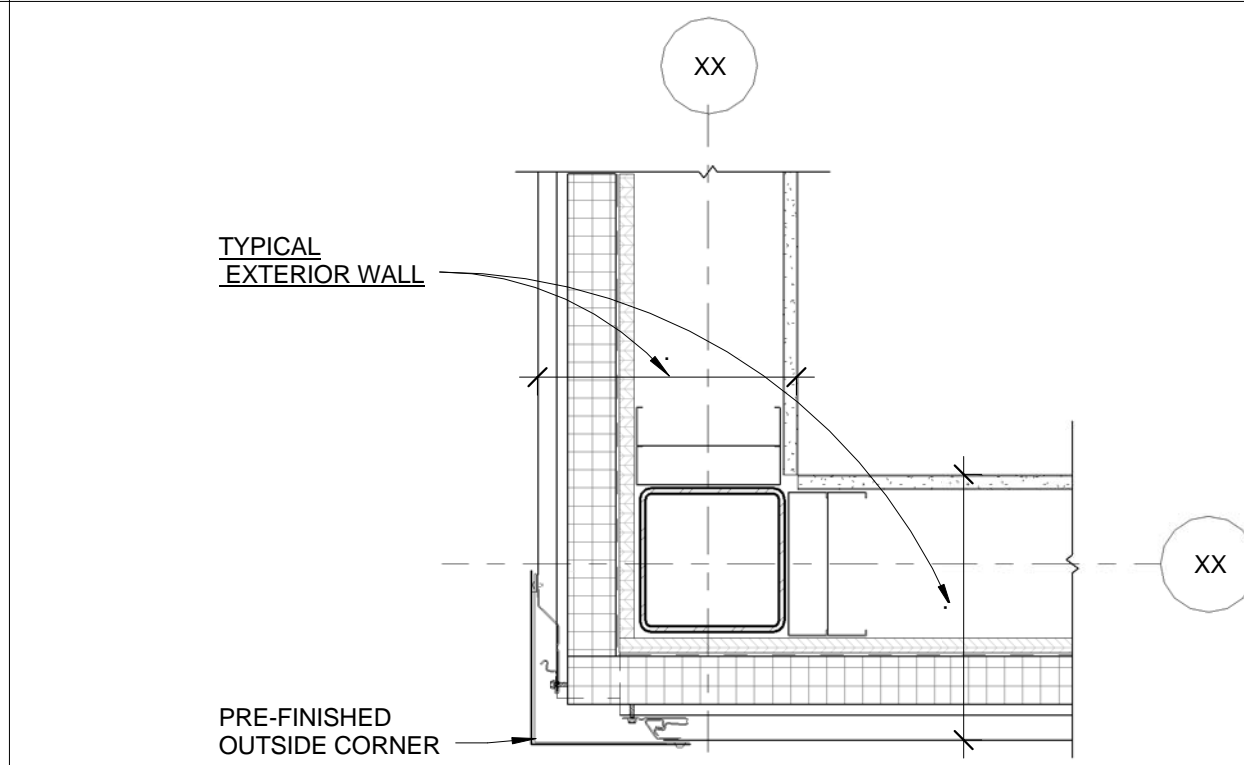
9 | EXTERIOR DETAIL - WINDOW HEAD/SILL
3" = 1'-0"



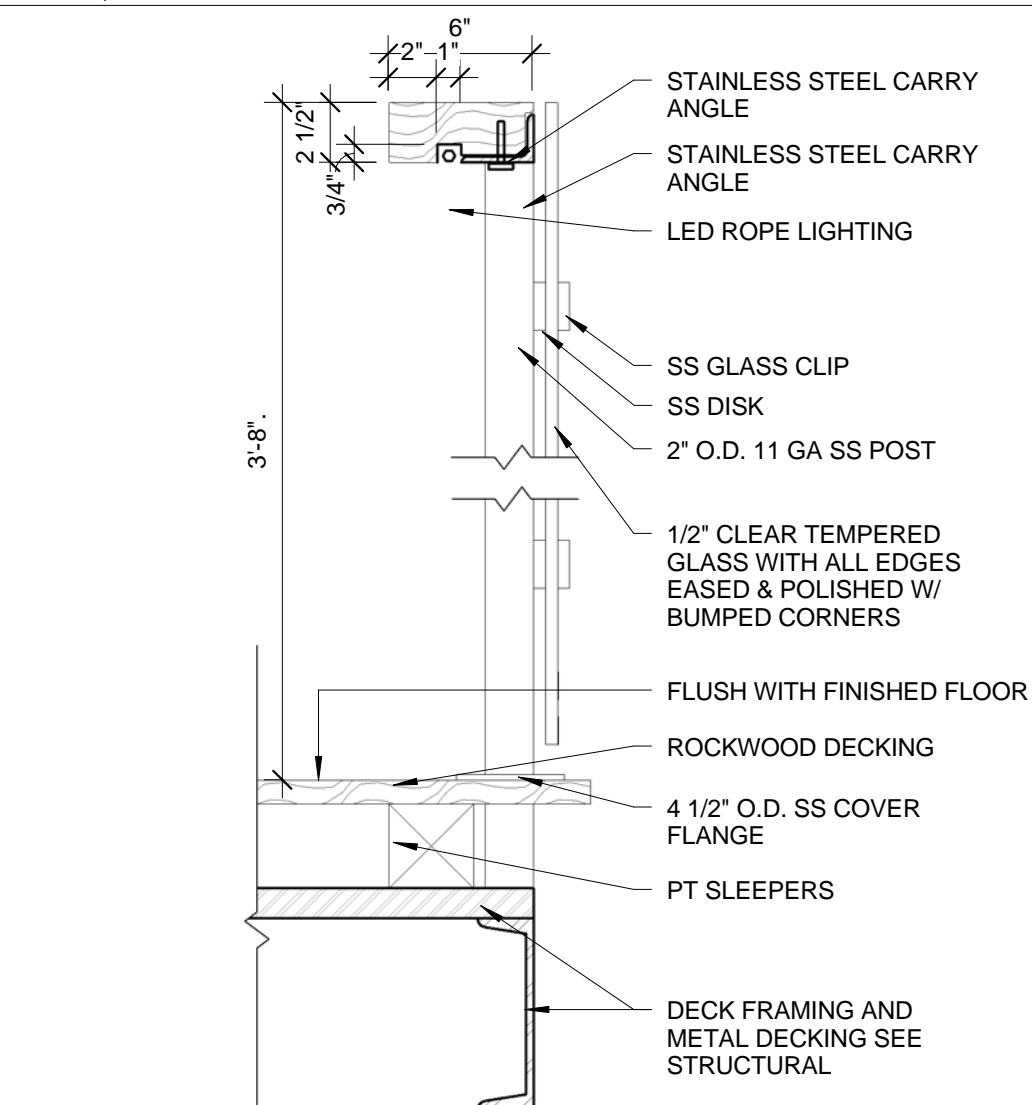
2 | WALL SECTION 2
1/2" = 1'-0"



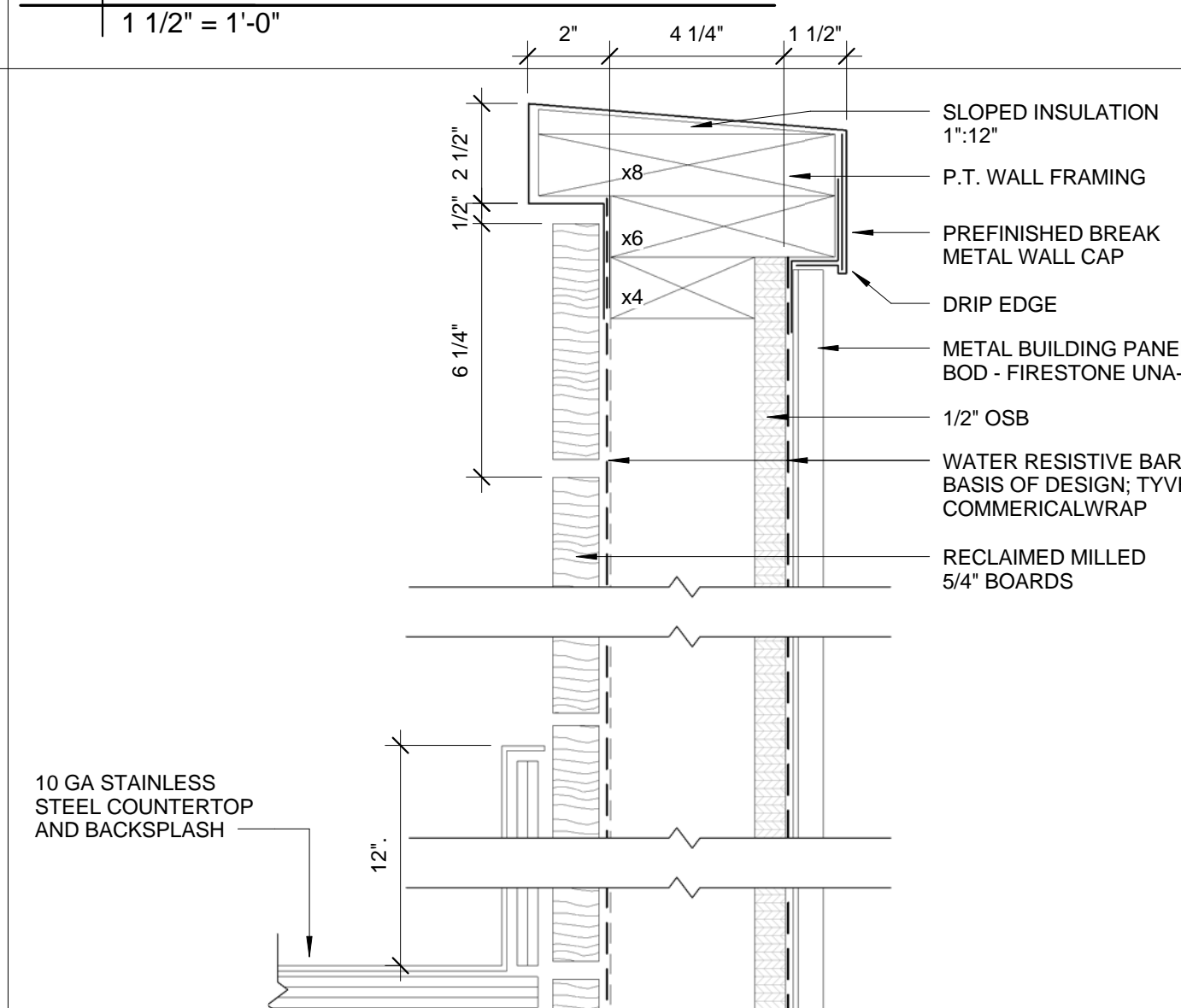
3 | EXTERIOR DETAILS - DOOR THRESHOLD
1 1/2" = 1'-0"



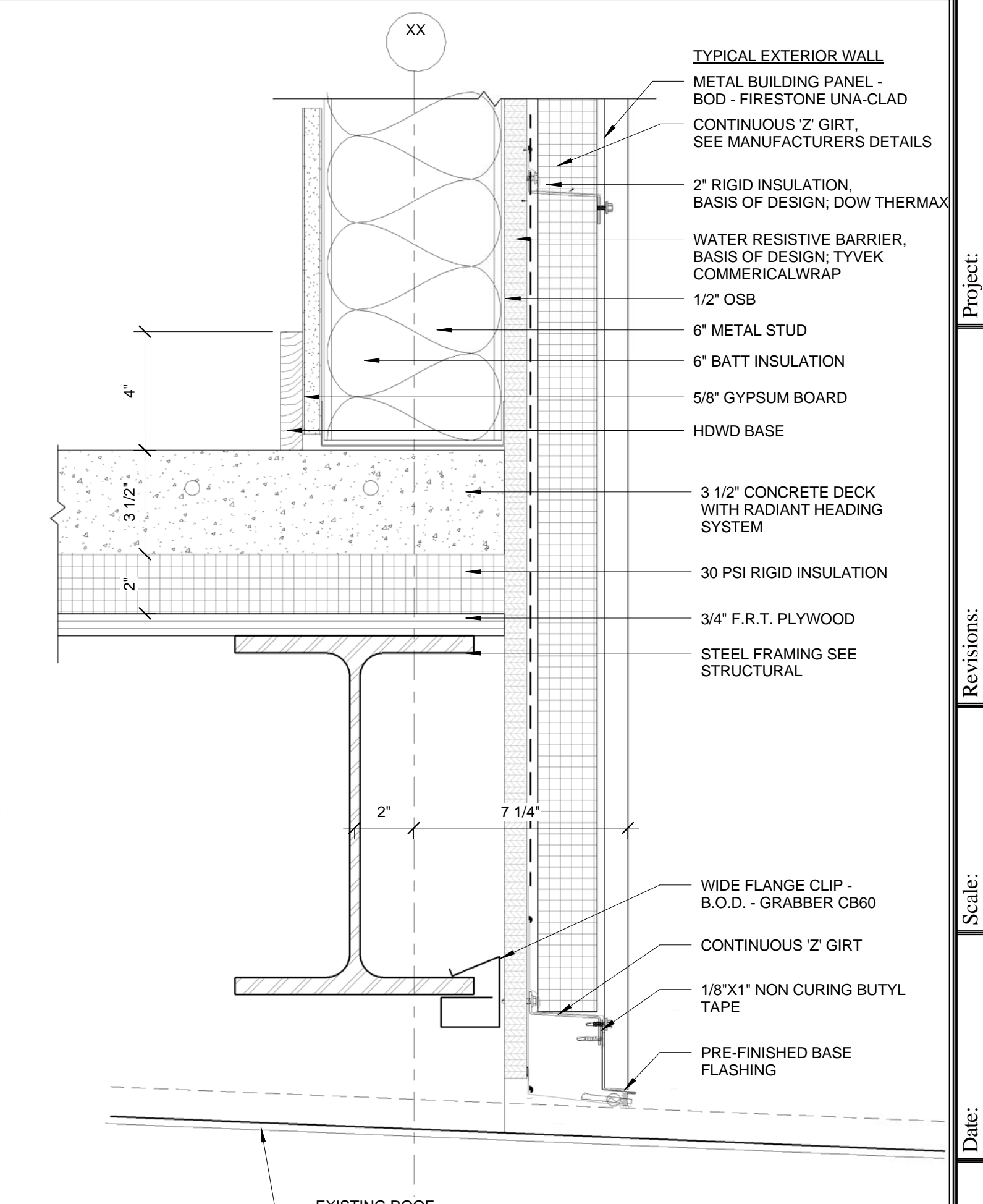
7 | ENVELOP DETAILS - CORNER
1 1/2" = 1'-0"



11 | RAILING DETAIL - MEZZ. LEVEL
1 1/2" = 1'-0"



8 | EXTERIOR DETAILS - COOKWALL DETAIL
3" = 1'-0"



10 | EXTERIOR DETAIL - BASE OF WALL
3" = 1'-0"

Prepared For: **MAINE WHARF LLC**

Architect: **ARCHETYPE architects**
48 Union Wharf Portland, Maine 04101
(207) 772-6022 Fax (207) 772-4056

Project: **MAINE WHARF OFFICE RENOVATION BUILDING B**
68 COMMERCIAL STREET, PORTLAND ME

Revisions:

Date: 21 JUNE 2013 Scale: As indicated

EXTERIOR DETAILS

A5.01