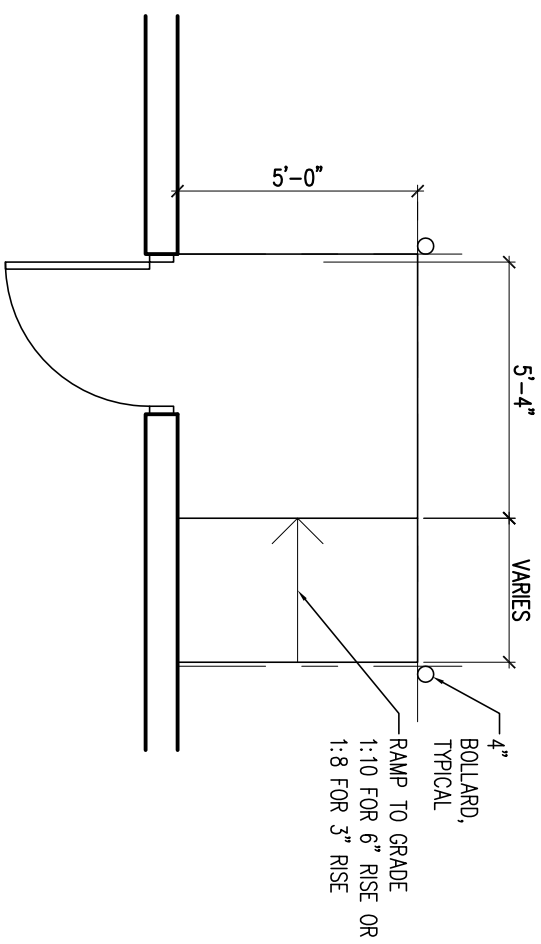


**1** | PROPOSED SITE PLAN  
SCALE: 1/32"=1'-0"



**2** | TYPICAL RAMP TO ENTRY  
SCALE: 1/4"=1'-0"

PROPOSED SITE PLANS

Project: MAINE WHARF

68 COMMERCIAL STREET  
PORTLAND, ME 04101

Date: 29 MAY 2013

Scale: SEE DETAIL

PROPOSED SITE  
PLANS

**ARCHETYPE**  
architects

48 Union Wharf Portland, Maine 04101  
(207) 772-6022 Fax (207) 772-4056

Prepared For:

MAINE WHARF LLC

72 COMMERCIAL STREET  
PORTLAND, ME 04101

SP-01  
ENLARGED