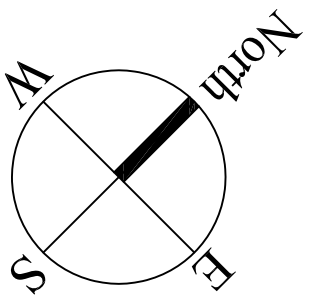
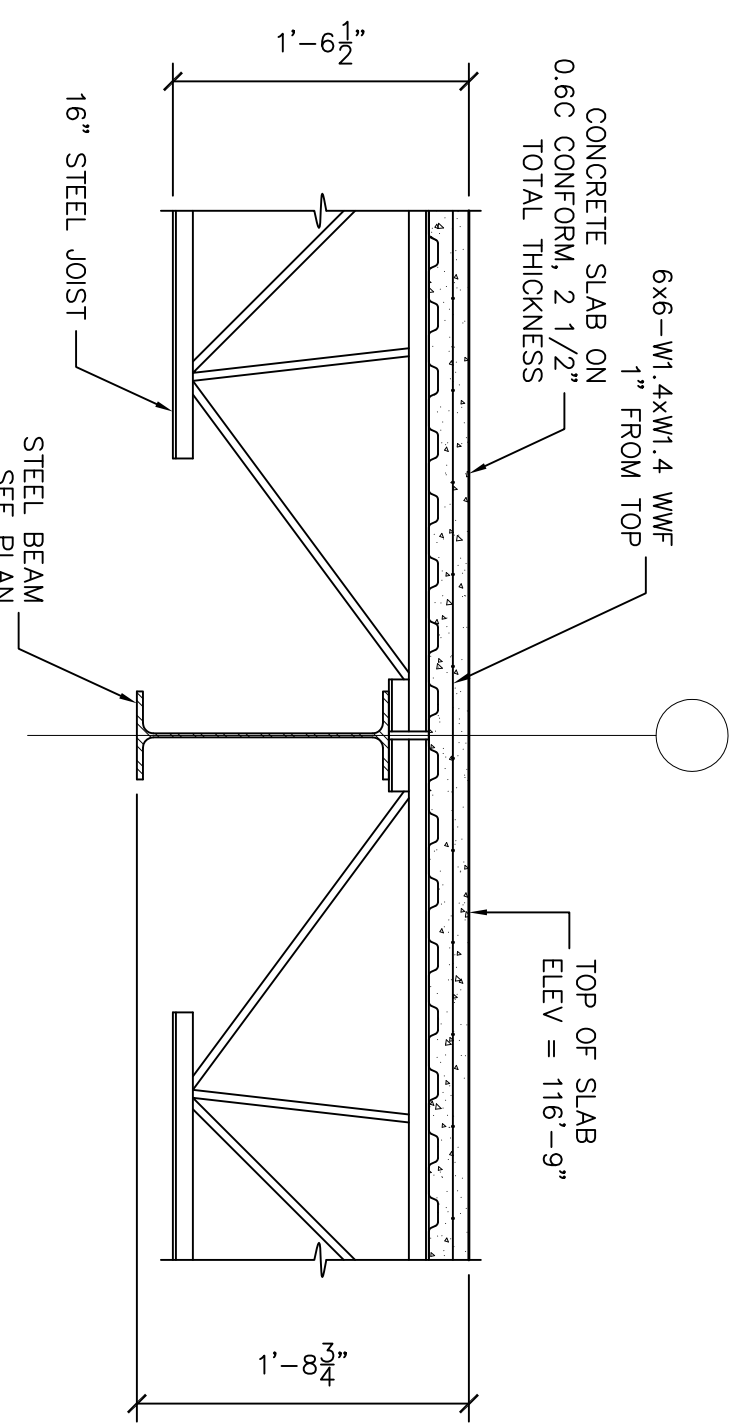
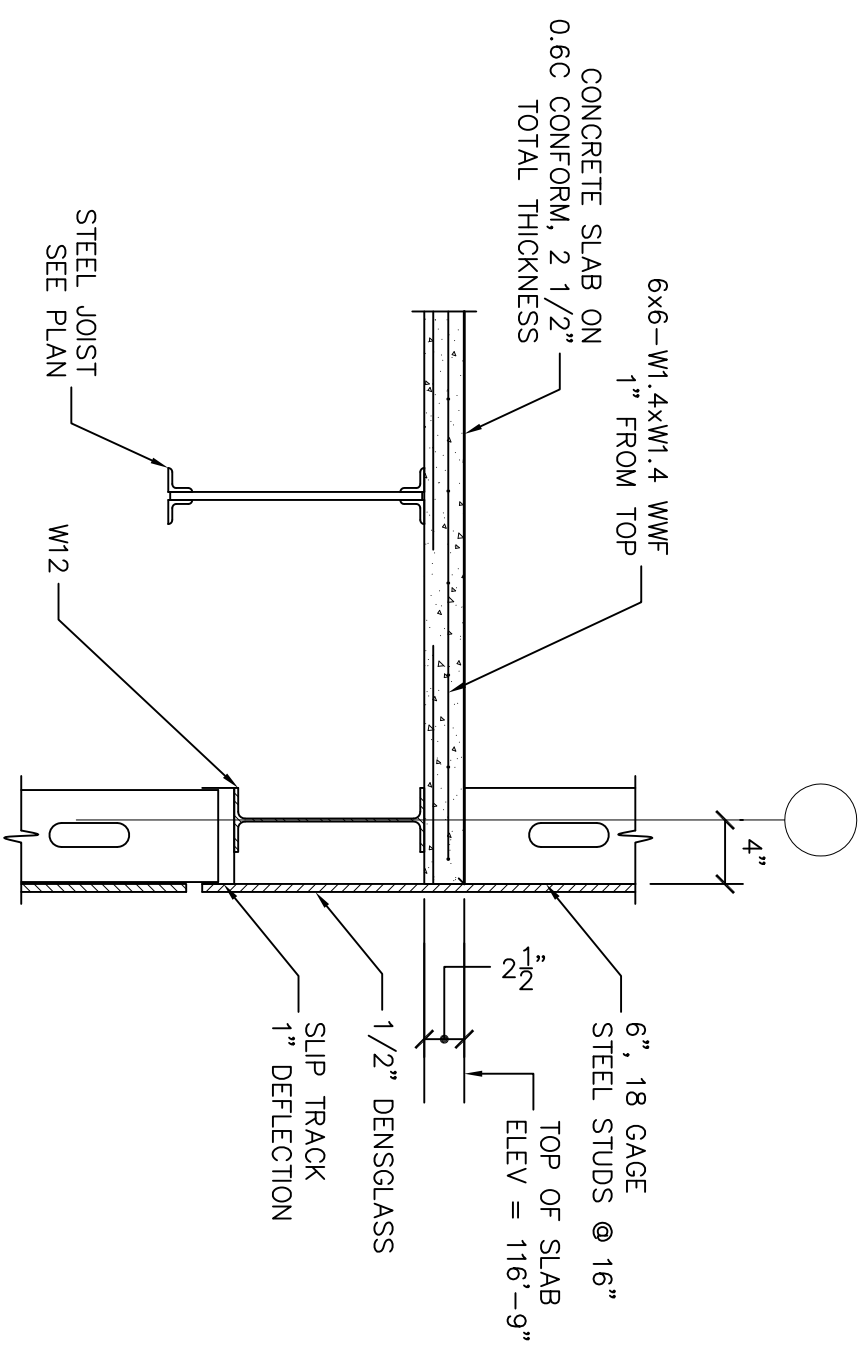
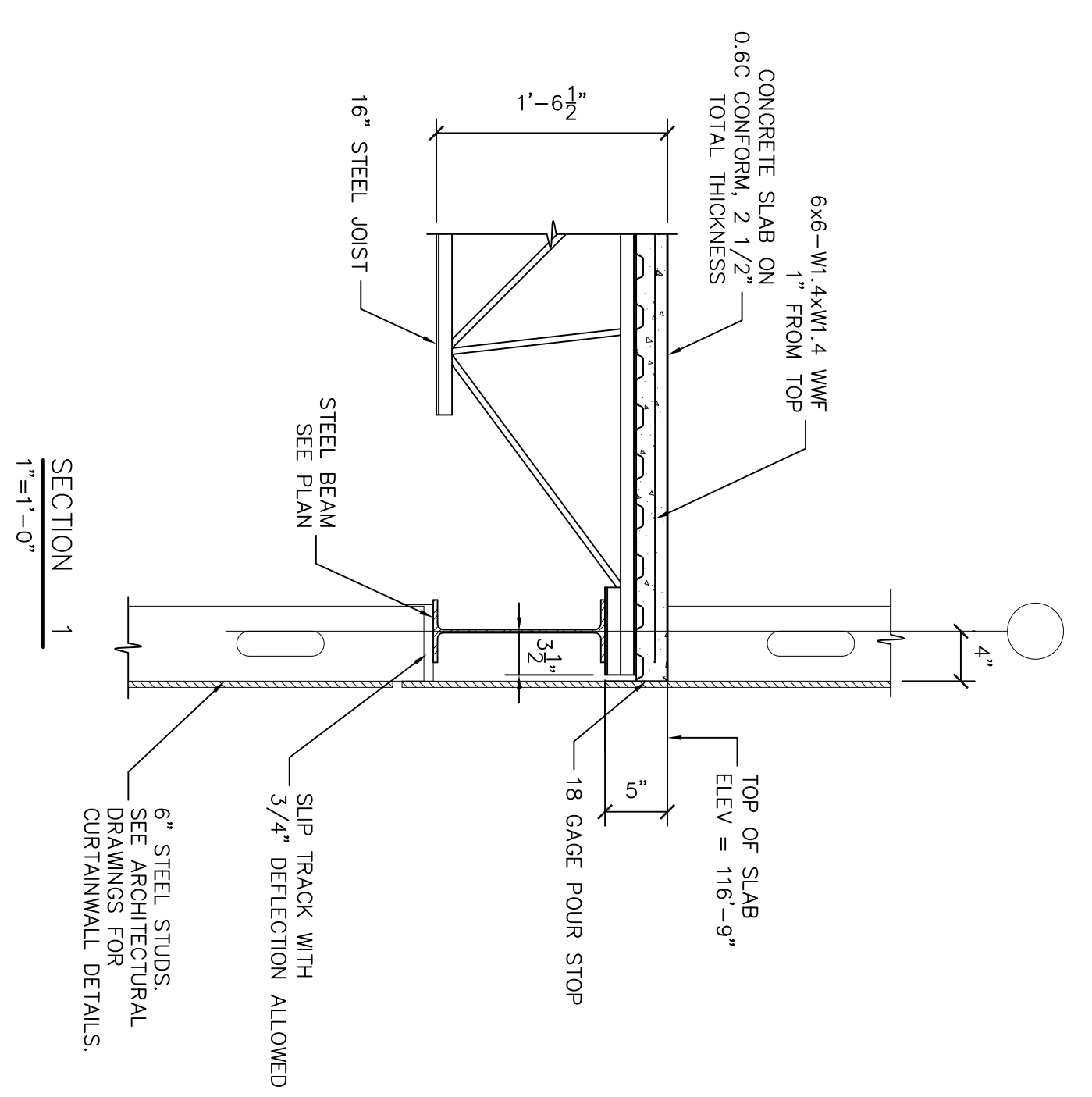


**SECOND FLOOR FRAMING PLAN**  
 1/4"=1'-0"  
 FLOOR SLAB IS GALVANIZED, 22 GAGE, 0.6C CSV CONFORM  
 STEEL DECK BY VULCRAFT WITH 2" CONCRETE TOPPING  
 (TOTAL THICKNESS = 2 1/2") WITH 6x6-W14xW1.4 WWF  
 LOCATED 1" FROM THE TOP SURFACE.



Key Plan

Bldg 1 Bldg 2

Date: 06 Feb 2013  
 Scale: As Noted  
**SECOND FLOOR FRAMING PLAN**

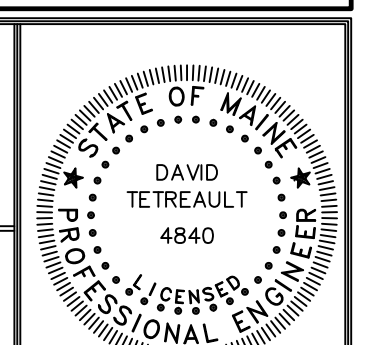
Revisions:	
General Revisions	05/15/13

Project: **Maine Wharf Building 1 Section A**  
 68 Commercial Street  
 Portland, ME

Architect: **ARCHETYPE Architects**  
 48 Union Wharf Portland, Maine 04101  
 (207) 772-6022 Fax (207) 772-4056

Consulting Engineer: **STRUCTURAL DESIGN CONSULTING**  
 22 Oakmont Drive  
 Old Orchard Beach ME 04064-1121  
 Tel 207.934.8038 Fax 207.934.8039

Prepared For: **MAINE WHARF, LLC**  
 P.O. Box 535  
 BUXTON, ME 04093



**S1.02**