

Proposed Sign Location

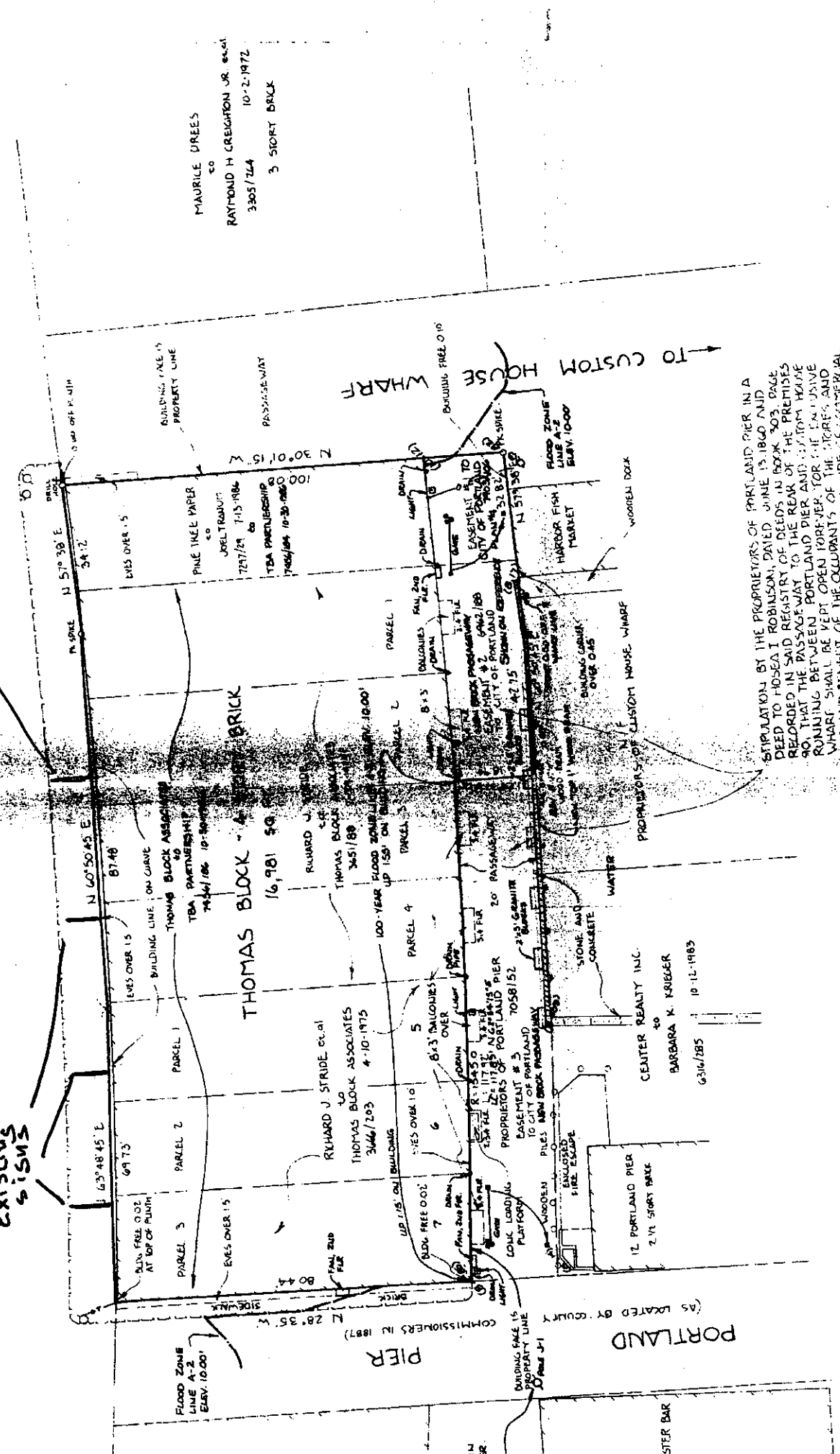
Existing Signs

Commercial Street

THOMAS BLOCK - 4 STORY BRICK

MAURILE DREES

RAYMOND H. CREIGHTON JR. et al
3305/724 10-2-1972
3 STORY BRICK



STIPULATION BY THE PROPRIETORS OF PORTLAND PIER IN A DEED TO HOSEA T. ROBINSON, DATED JUNE 13, 1860 AND RECORDED IN SAID REGISTRY OF DEEDS IN BOOK 303, PAGE 90, THAT THE PASSAGE WAY TO THE REAR OF THE PREMISES RUNNING BETWEEN PORTLAND PIER AND CUSTOM HOUSE WHARF SHALL BE KEPT OPEN FOREVER FOR THE EXCLUSIVE USE AND BENEFIT OF THE OCCUPANTS OF THE STORES AND WAREHOUSES ON THE SOUTHEASTERN SIDE OF COMMERCIAL STREET BETWEEN PORTLAND PIER AND CUSTOM HOUSE WHARF

PORTLAND
(AS LOCATED BY COURTY
COMMISSIONERS IN 1887)

STER BAR

SEE PLANS