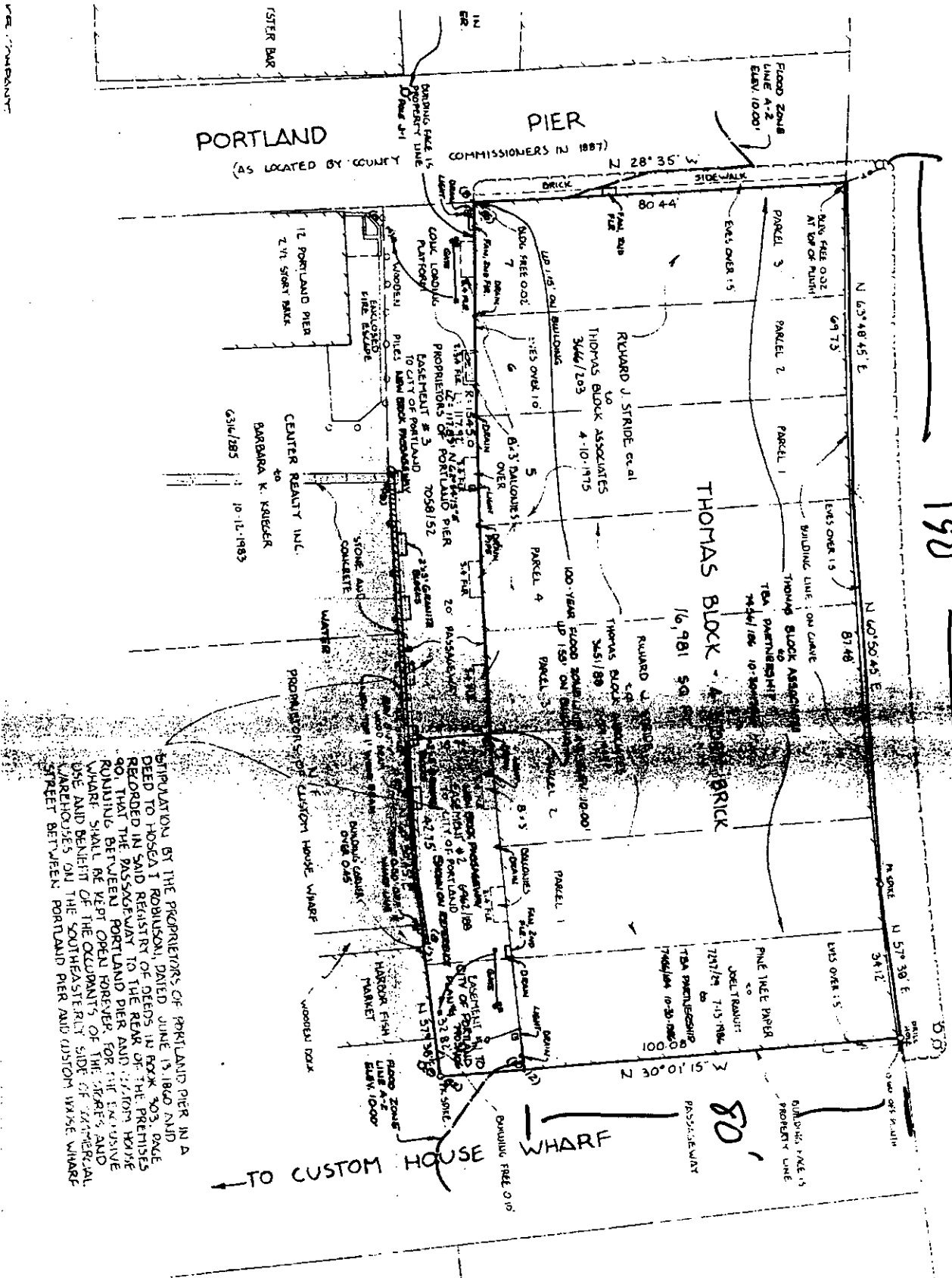


COMMERCIAL

190

STEEL



DECLARATION BY THE PROPRIETORS OF PORTLAND PIER IN A DEED TO HOSEA I ROBINSON, DATED JUNE 13, 1860 AND RECORDED IN SAID REGISTER OF DEEDS IN BOOK 303, PAGE 40, THAT THE PASSAGEWAY TO THE REAR AND CUSTOM HOUSE WHARF BETWEEN PORTLAND PIER AND CUSTOM HOUSE WHARF SHALL BE KEPT OPEN FOREVER FOR THE SERVICE AND USE AND BENEFIT OF THE OCCUPANTS OF THE SAID COMMERCIAL WAREHOUSES ON THE SOUTHEASTERN SIDE OF CUSTOM HOUSE STREET BETWEEN PORTLAND PIER AND CUSTOM HOUSE WHARF

MAURICE DRESS
 TO
 RAYMOND H CREIGHTON JR
 3005/24
 10-2-1972
 3 STORY BRICK

42.75
 38.82
 76.57

TO CUSTOM HOUSE WHARF