

COMMERCIAL

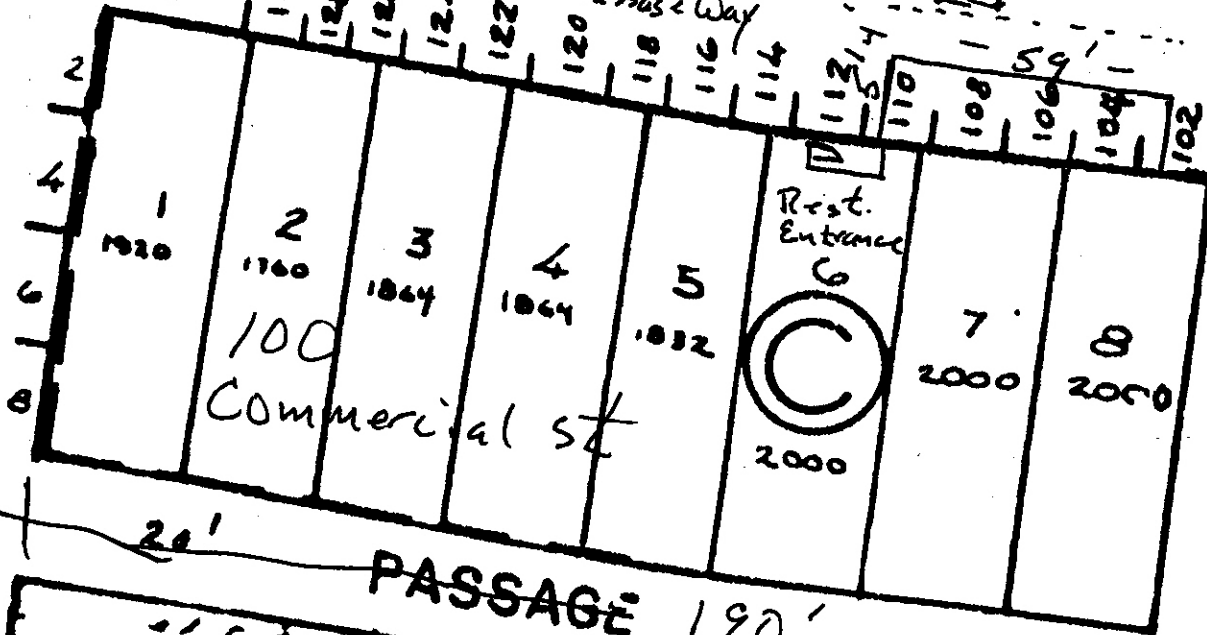
150
130
4
173
6
7
9
11
13
15
17
19
21
23
26

Sidewalk

Curby

Tree Box

Passage Way



Commercial St

Rest. Entrance

2000

PASSAGE 190'

PASSAGE 80' ← Pearl St

WHARF

9

12016

DOCK
&

7407

CANOPY

100 Commercial Street

Spread Restaurant Outside Seating

Sidewalk Width: 13'7"

Tree Box Width: 4'7"

Passage Way Width: 4'

Seating Area Width: 5'

Seating Area Length: 59'

Square Footage of Seating: 295 SF

Tables: 2'x2'