



ATM ENCLOSURE SUBMISSION

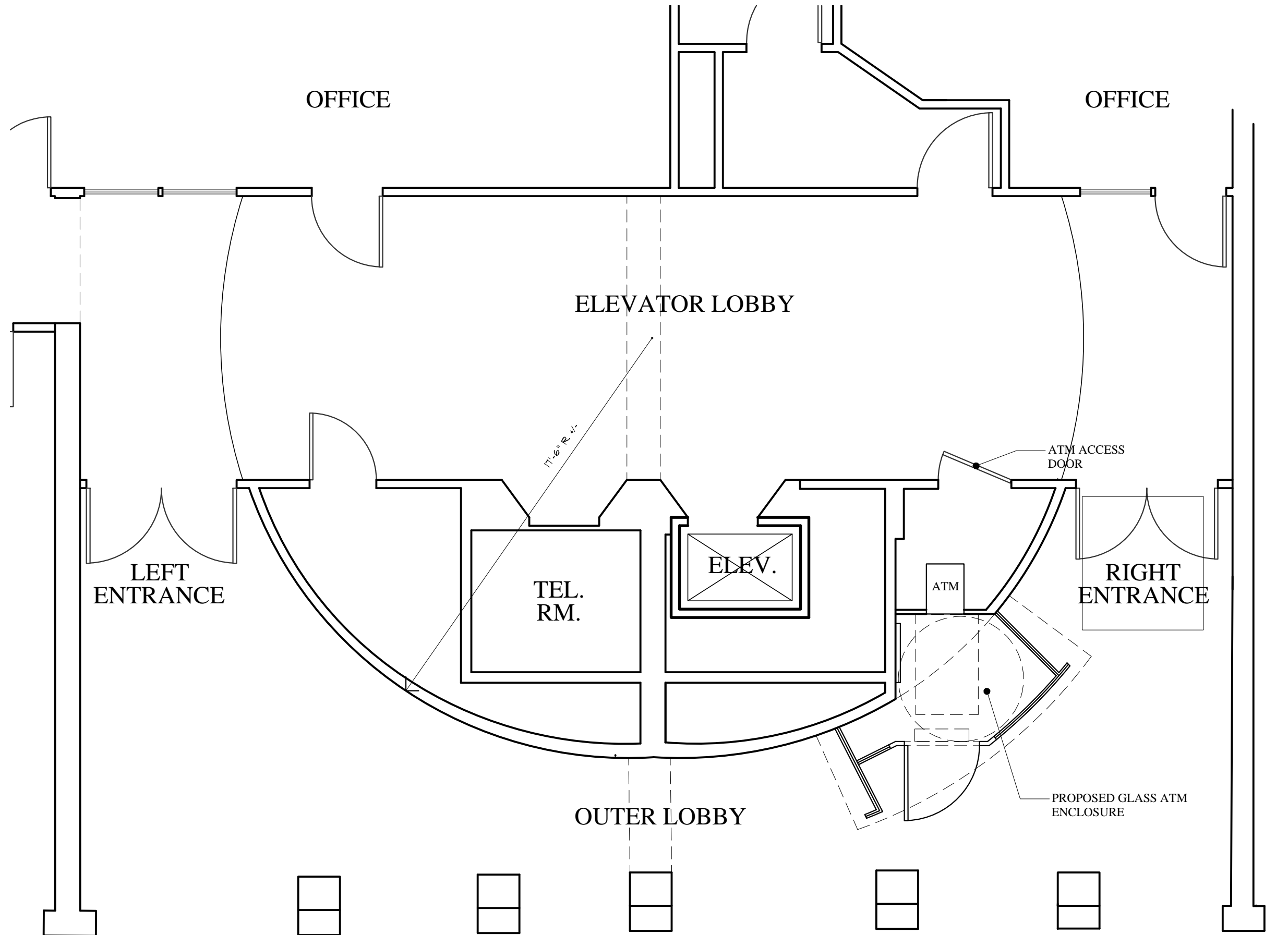


MARK
MUELLER
ARCHITECTS

HISTORIC PRESERVATION BOARD

JANUARY 21, 2015

100 COMMERCIAL STREET



P R O P O S E D



MARK
MUELLER
ARCHITECTS

HISTORIC PRESERVATION BOARD

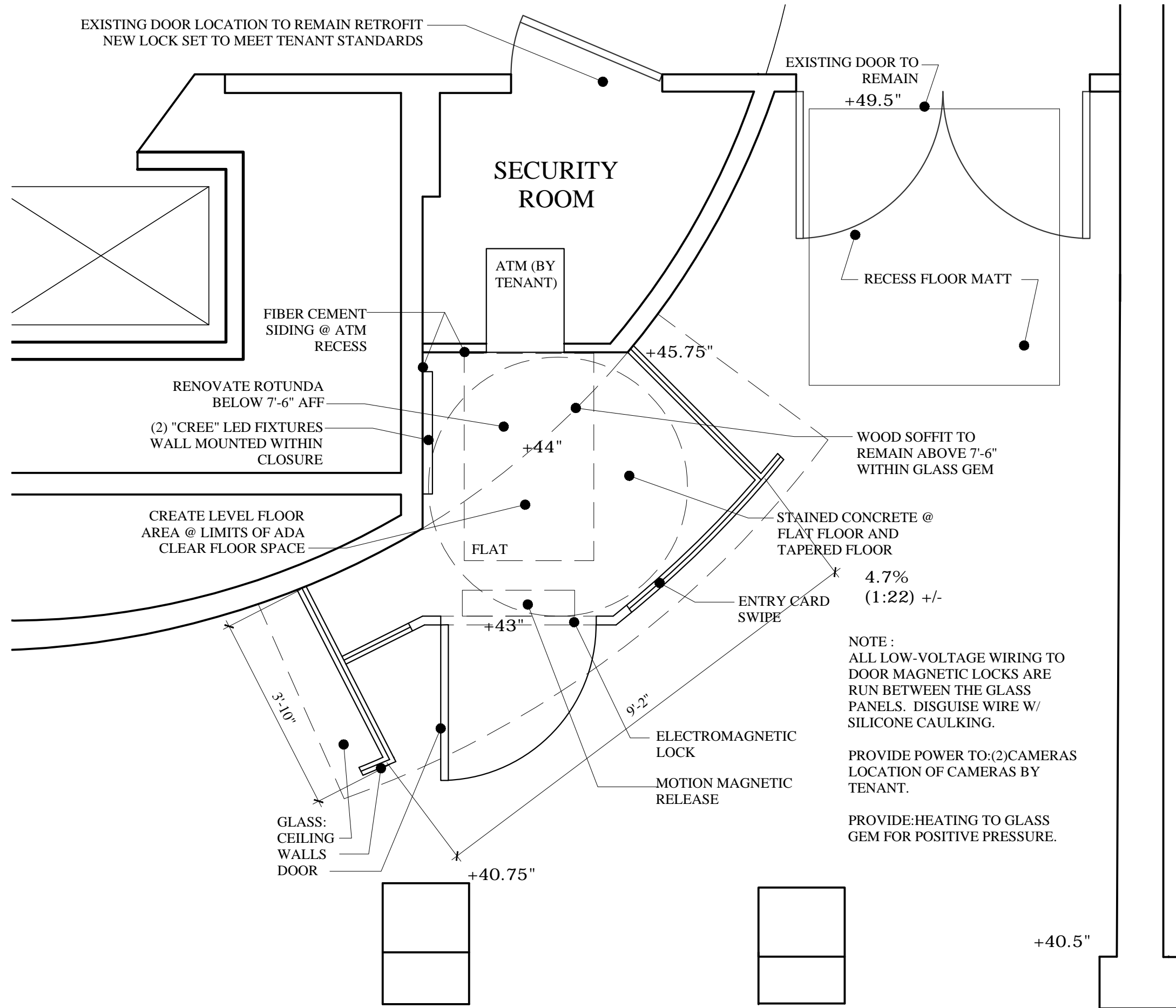
ATM ENCLOSURE PLAN

100 COMMERCIAL STREET

JANUARY 21, 2015

1/4" = 1'-0"

HP-1.0



NOTE:
 ALL LOW-VOLTAGE WIRING TO
 DOOR MAGNETIC LOCKS ARE
 RUN BETWEEN THE GLASS
 PANELS. DISGUISE WIRE W/
 SILICONE CAULKING.

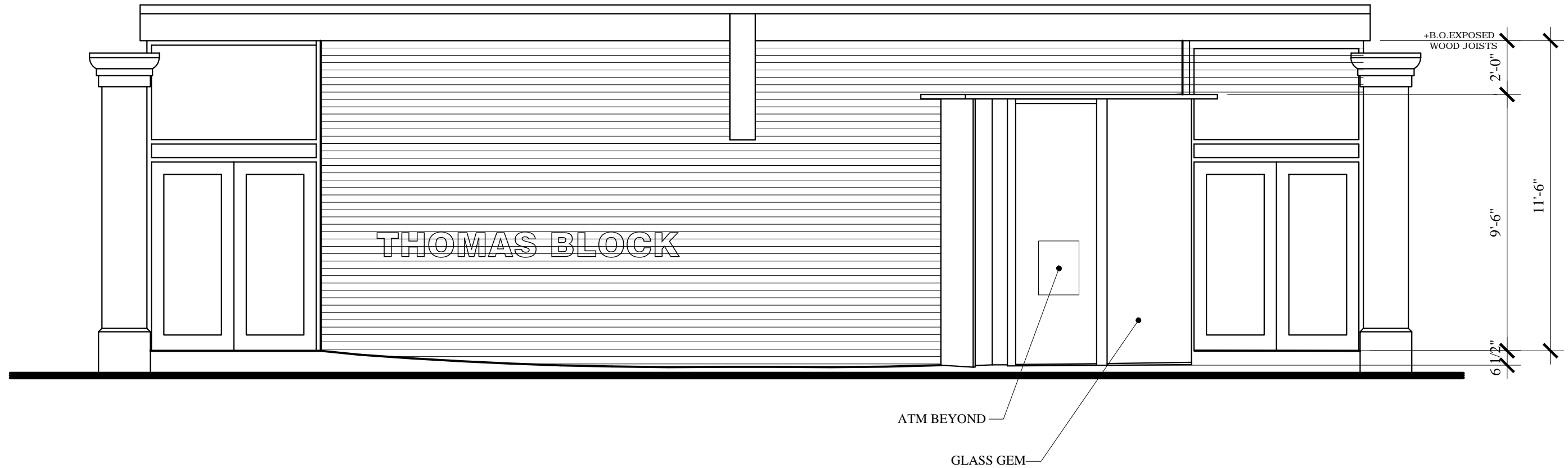
PROVIDE POWER TO:(2)CAMERAS
 LOCATION OF CAMERAS BY
 TENANT.

PROVIDE:HEATING TO GLASS
 GEM FOR POSITIVE PRESSURE.

P R O P O S E D



MARK
 MUELLER
 ARCHITECTS



PROPOSED



MARK
MUELLER
ARCHITECTS

HP-2.0

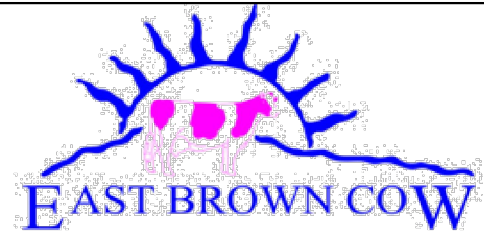
JANUARY 21, 2015

HISTORIC PRESERVATION BOARD

EXTERIOR ELEVATION

100 COMMERCIAL STREET

1/4" = 1'-0"



P R O P O S E D



MARK
MUELLER
ARCHITECTS

HISTORIC PRESERVATION BOARD

HP-2.1

JANUARY 21, 2015

100 COMMERCIAL STREET



P R O P O S E D



MARK
MUELLER
ARCHITECTS

HP-2.2

HISTORIC PRESERVATION BOARD

JANUARY 21, 2015

100 COMMERCIAL STREET



P R O P O S E D



MARK
MUELLER
ARCHITECTS

HISTORIC PRESERVATION BOARD

HP-2.3

JANUARY 21, 2015

100 COMMERCIAL STREET



P R O P O S E D



MARK
MUELLER
ARCHITECTS

HP-2.4

HISTORIC PRESERVATION BOARD

JANUARY 21, 2015

100 COMMERCIAL STREET



P R O P O S E D



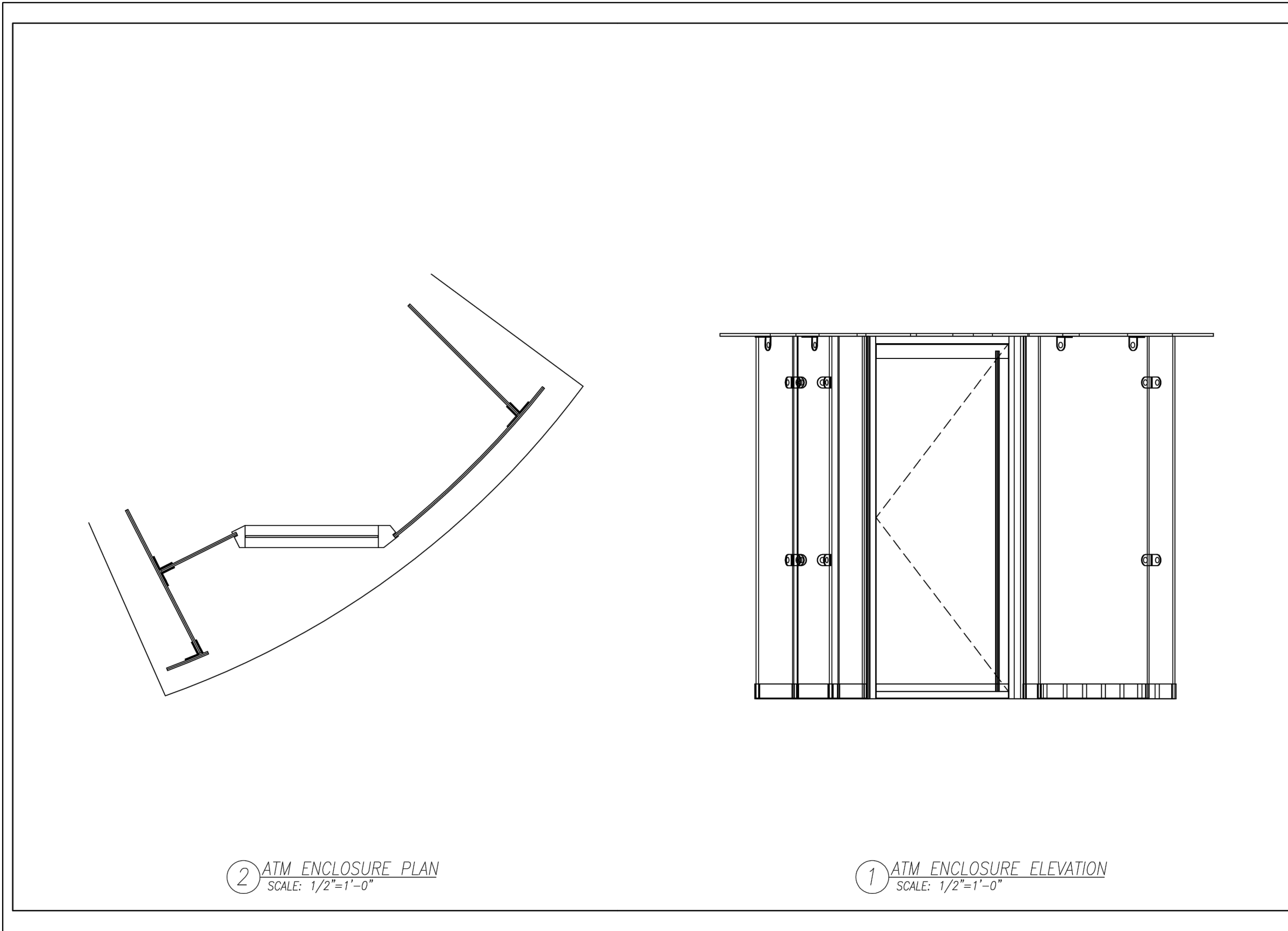
MARK
MUELLER
ARCHITECTS

HISTORIC PRESERVATION BOARD

HP-2.5

JANUARY 21, 2015

100 COMMERCIAL STREET



2 ATM ENCLOSURE PLAN
SCALE: 1/2"=1'-0"

1 ATM ENCLOSURE ELEVATION
SCALE: 1/2"=1'-0"

100 COMMERCIAL STREET
PORTLAND, ME

BELLWETHER
DESIGN TECHNOLOGIES

Custom Glass Facades / Skylights / Canopies / Vestibules
Glass Bridges + Walkways / Feature Walls + Railings

409 Alfred Street · Biddeford, ME 04005 · (207) 571-3340
www.BellwetherDesignTech.com

REVISIONS	
Rev.#	Description

SHEET TITLE:
ATM ENCLOSURE CONCEPTS

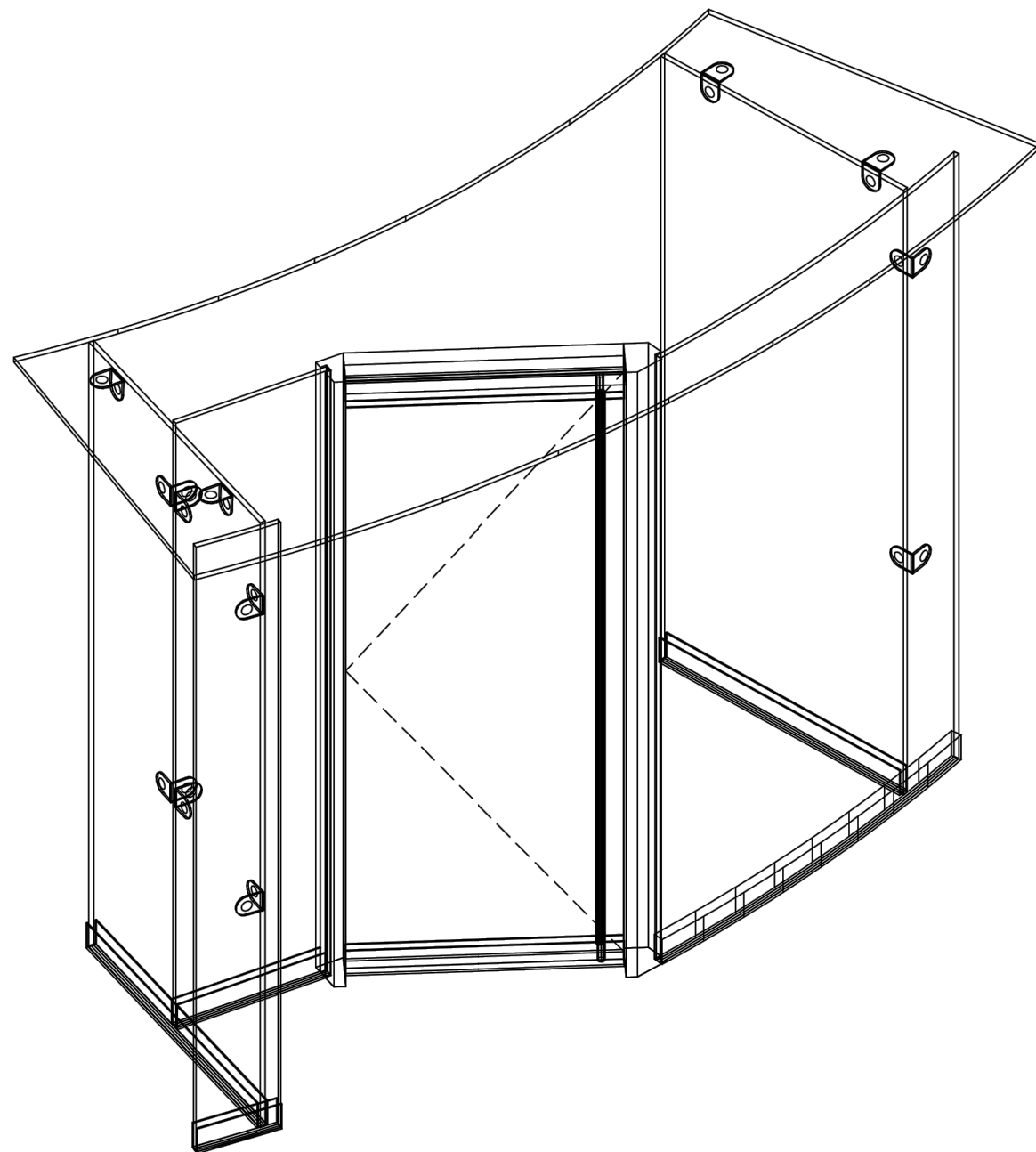
Drawn By: GBH Date: 12/2/14

FILENAME / SHEET NO:
14-766
S1A

P R O P O S E D



MARK
MUELLER
ARCHITECTS



1 ATM ENCLOSURE ISOMETRIC
SCALE: NTS

100 COMMERCIAL STREET
PORTLAND, ME

BELLWETHER
DESIGN TECHNOLOGIES

Custom Glass Facades / Skylights / Canopies / Vestibules
Glass Bridges + Walkways / Feature Walls + Railings

409 Alfred Street · Biddeford, ME 04005 · (207) 571-3340
www.BellwetherDesignTech.com

REVISIONS	
Rev.#	Description

SHEET TITLE:
ATM ENCLOSURE CONCEPTS

Drawn By: GBH Date: 12/2/14

FILENAME / SHEET NO:
14-766
S2A

P R O P O S E D



MARK
MUELLER
ARCHITECTS



207 571-3341
409 Alfred Street
Biddeford, ME 04005
BellwetherDesignTech.com

Date: December 12, 2014

Job Name: 100 Commercial Street ATM Enclosure
Location: Portland, ME
Inquiry No.: 14-766

Attention: Mr. Tim Soley, East Brown Cow Management, Inc.

Dear Tim:

Thank you for the opportunity to provide a proposal for the design, engineering and supply of the custom, point supported ATM Enclosure at 100 Commercial Street in Portland, ME.

Bellwether Design Technologies brings over 20 years of experience in the design, development and engineering of custom glazing projects. We have developed point supported and structural glass projects as well as custom skylights and curtain wall, throughout the US for world-renowned architects.

Our systems are always designed for the most efficient installation by our customers, and we bring complete engineering coordination and responsibility to the project, providing all required calculations and stamps.

This proposal includes our commitment to collaborate with East Brown Cow, Mark Mueller Architects, and all surrounding trades from this point through final design, engineering, fabrication and installation.

We look forward to a close working relationship with you and the rest of the project team members.

Sincerely,

Brian Harrington
Bellwether Design Technologies
b.harrington@bellwetherdesigntech.com



207 571-3341
409 Alfred Street
Biddeford, ME 04005
BellwetherDesignTech.com

Date: December 12, 2014

Job Name: 100 Commercial Street ATM Enclosure
Location: Portland, ME
Inquiry No.: 14-766

Glass Description

ATM Enclosure Glass:

- **13/16" Clear Laminated Glass, Fully Tempered**
 - o *Outboard Lite: 3/8" Clear Glass, Fully Tempered*
 - o *Interlayer: .060 PVB*
 - o *Inboard Lite: 3/8" Clear Glass, Fully Tempered*
 - o *Holes: Through Holes*
 - o *Edgework: Polished Edges*

Material and Finish Options

Perimeter Glass Channel: *Anodized Aluminum, w/ Stainless Steel Cladding*

Glass Angle Clips: *Stainless Steel, Brushed Finish*

Door Portal: *Custom Formed 3/16" Aluminum, w/ Stainless Steel Cladding, Prepped for Electronics.*

Doors

*3/4" Monolithic Glass, Tempered
Push Pull Ladder Handles
4" Top and Bottom Rails with Lock
Heavy Duty Floor closers
Floating Header Prepped for Electronics*

Bid/Budget Documents:

This proposal was based on:

- Architectural drawings by Mark Mueller Architects
- Bellwether drawings S1 & S2 dated December 2, 2014.

Please see attached scope sheets for project layout.

P R O P O S E D



MARK
MUELLER
ARCHITECTS



E X I S T I N G



MARK
MUELLER
ARCHITECTS

HISTORIC PRESERVATION BOARD

HP-4.0

JANUARY 21, 2015

100 COMMERCIAL STREET



E X I S T I N G



MARK
MUELLER
ARCHITECTS

HISTORIC PRESERVATION BOARD

HP-4.1

JANUARY 21, 2015

100 COMMERCIAL STREET



E X I S T I N G



MARK
MUELLER
ARCHITECTS

HISTORIC PRESERVATION BOARD

HP-4.2

JANUARY 21, 2015

100 COMMERCIAL STREET