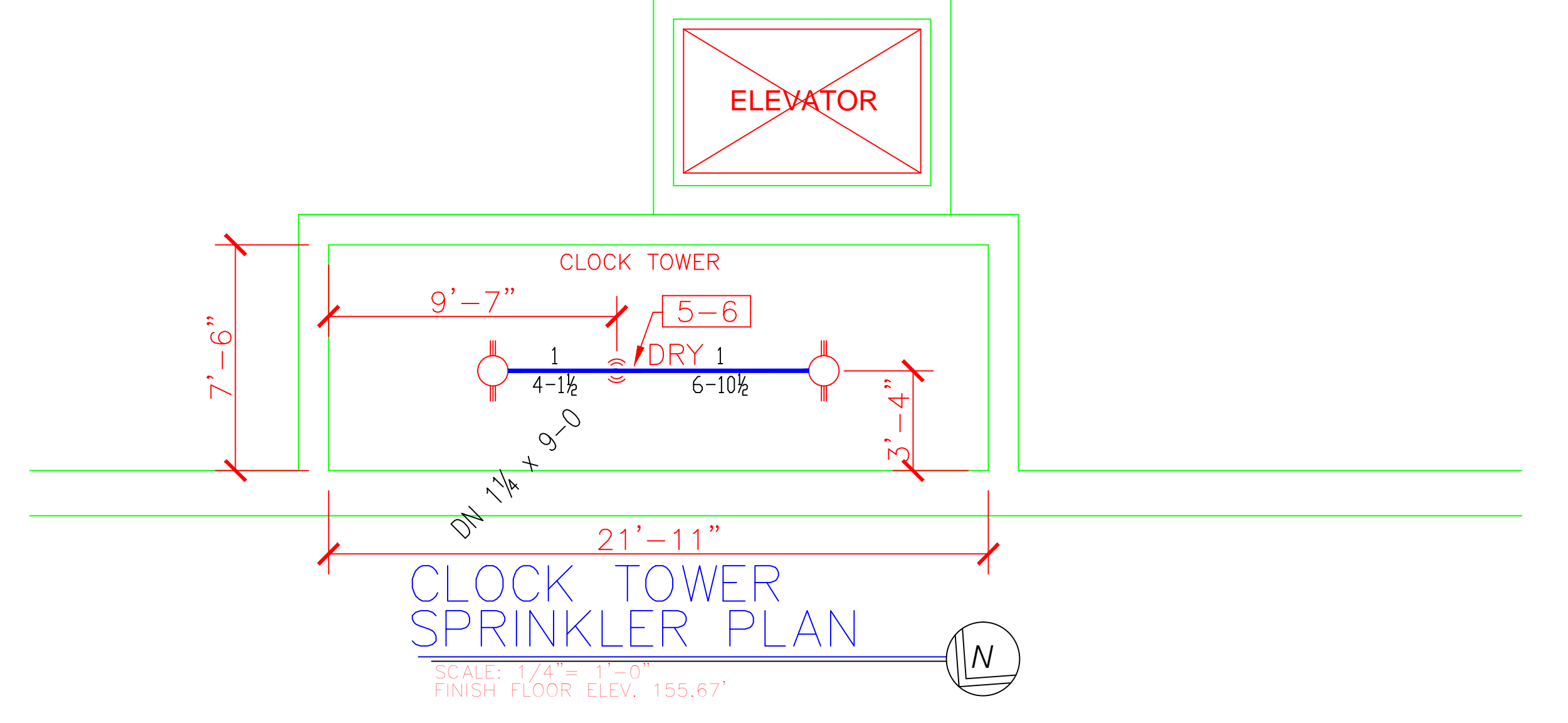


**FOURTH FLOOR SPRINKLER PLAN**  
 SCALE: 1/8" = 1'-0"  
 FINISH FLOOR ELEV. 142.96'

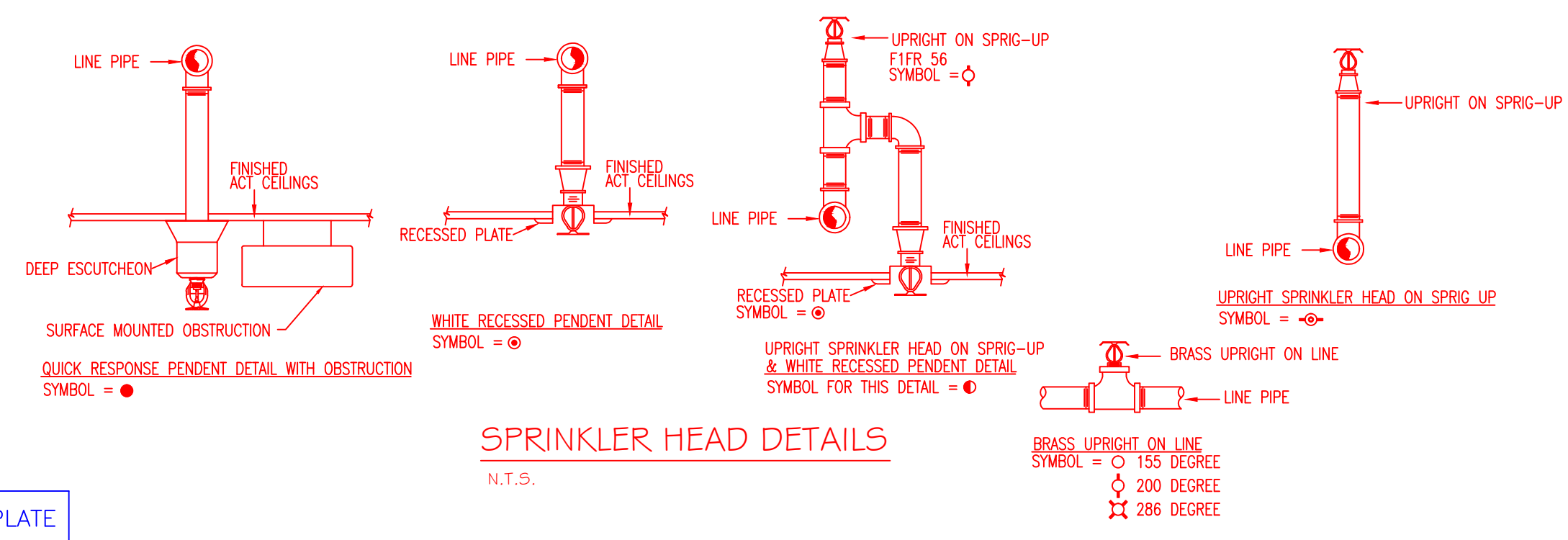


**CLOCK TOWER SPRINKLER PLAN**  
 SCALE: 1/4" = 1'-0"  
 FINISH FLOOR ELEV. 155.67'

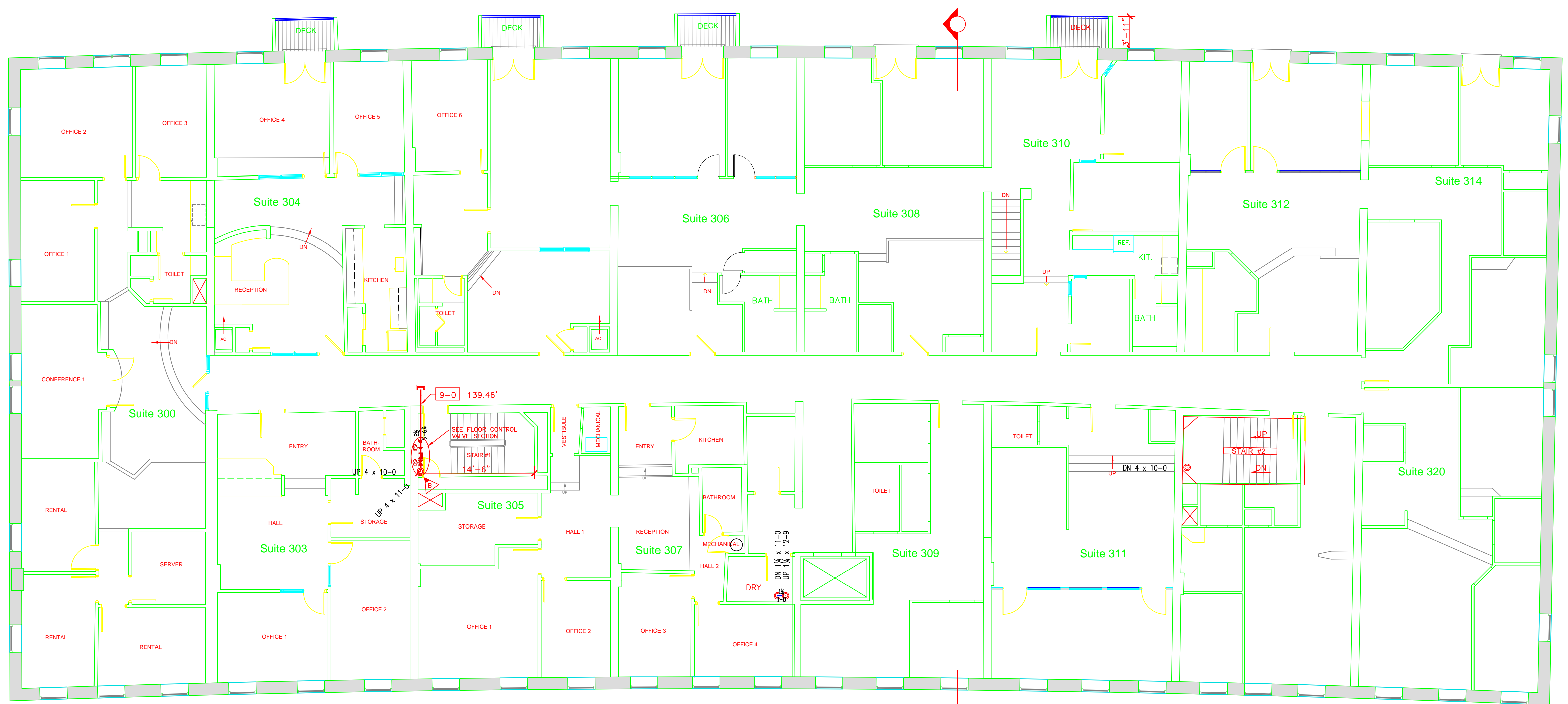
**WET SYSTEM PHASE 1**

**HYDRAULIC DATA NAMEPLATE**  
 This Building is protected by a hydraulically designed Automatic Sprinkler System  
 Location: AREA-1  
 No. of Sprinkler: 14  
 Basis of design:  
 1. Density: .10 gpm/sq ft  
 2. Design area: 945 sq ft  
 System Demand:  
 1. Water Flow Rate: 248.18 gpm  
 2. Residual Pressure: 85.803 psi  
 3. Base/Pump: 16.91 psi  
 CUSHION = 16.91 psi

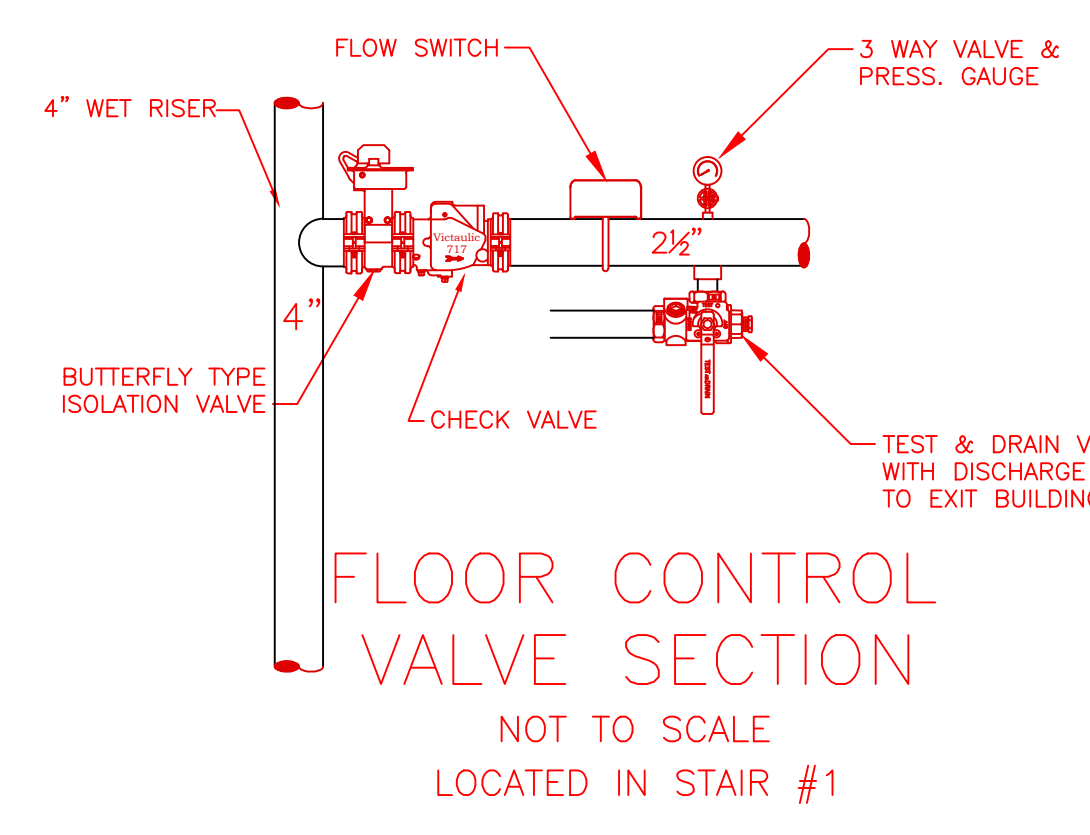
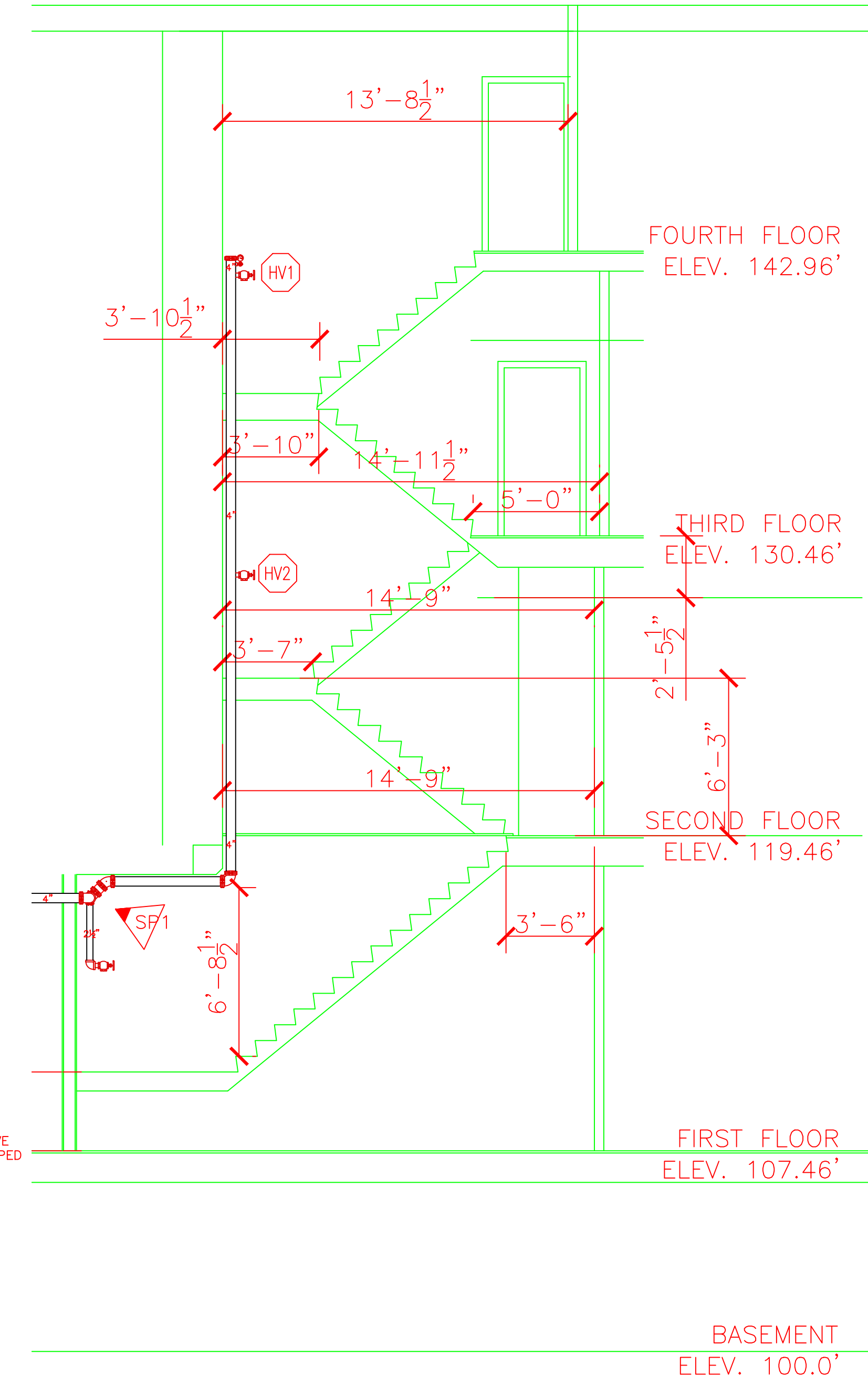
**MOST REMOTE**



**SPRINKLER HEAD DETAILS**  
 N.T.S.



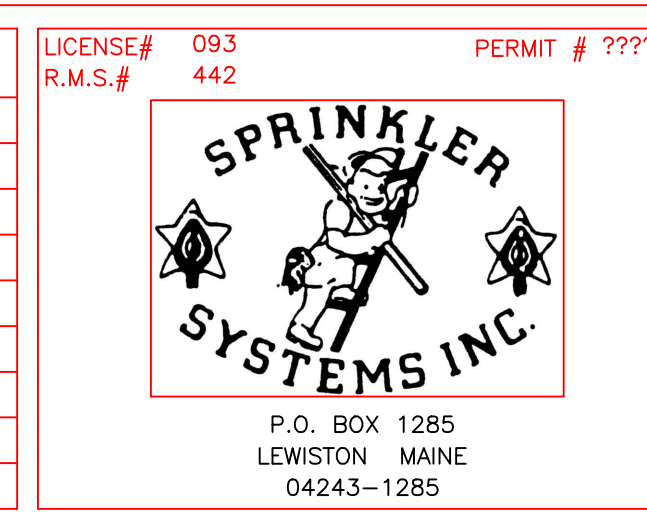
**THIRD FLOOR SPRINKLER PLAN**  
 SCALE: 1/8" = 1'-0"  
 FINISH FLOOR ELEV. 130.46'



**FLOOR CONTROL VALVE SECTION**  
 NOT TO SCALE  
 LOCATED IN STAIR #1

**STAIR #2 SECTION**  
 SCALE: 1/4" = 1'-0"  
 PHASE 1 SUBMITTAL COPY

SPRINKLER HEAD LEGEND										
SYMBOL	MAKE	MODEL	SIN	FINISH	TYPE	TEMP	NPT	ORIFICE	K-FACTOR	TOTAL
○	RELIABLE	F1FR 96	RA1414	WHITE	SEMI-REC PENDING	155° F	1/2"	1/2"	5.6	21
○	RELIABLE	F1FR 96	RA1425	BRONZE	UPRIGHT	200° F	1/2"	1/2"	5.6	134
TOTAL										155



THOMAS BLOCK		100 COMMERCIAL STREET		PORTLAND, MAINE 04101	
CONTRACT WITH	EAST BROWN COW	NO.	DATE	DESCRIPTION	REVISIONS
SYSTEM TYPE	WET				
	DRY				
	DELUGE				
	PREACTION				
	ME. LIFE				
	HYDRO-PRO				
DATE	09/14/2015	TOTAL SPKRS ON JOB	155	SHEET#	3 of 3
DRAWN BY	JJP	CHECKED BY	CDS	JOB#	15095