

↑ COMMERCIAL STREET
FROM ENTRY

—

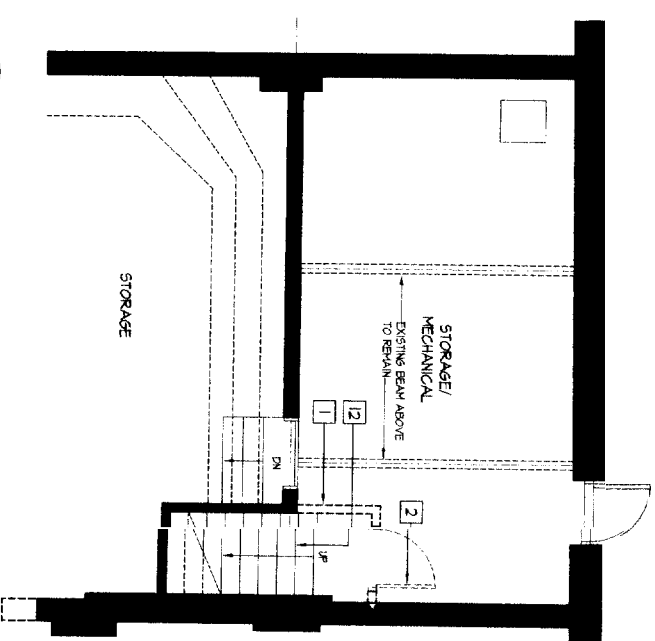
forestfirearchive@us.com

DEPARTMENT OF

FIRST FLOOR AND BASEMENT
CODE REVIEW PLANS

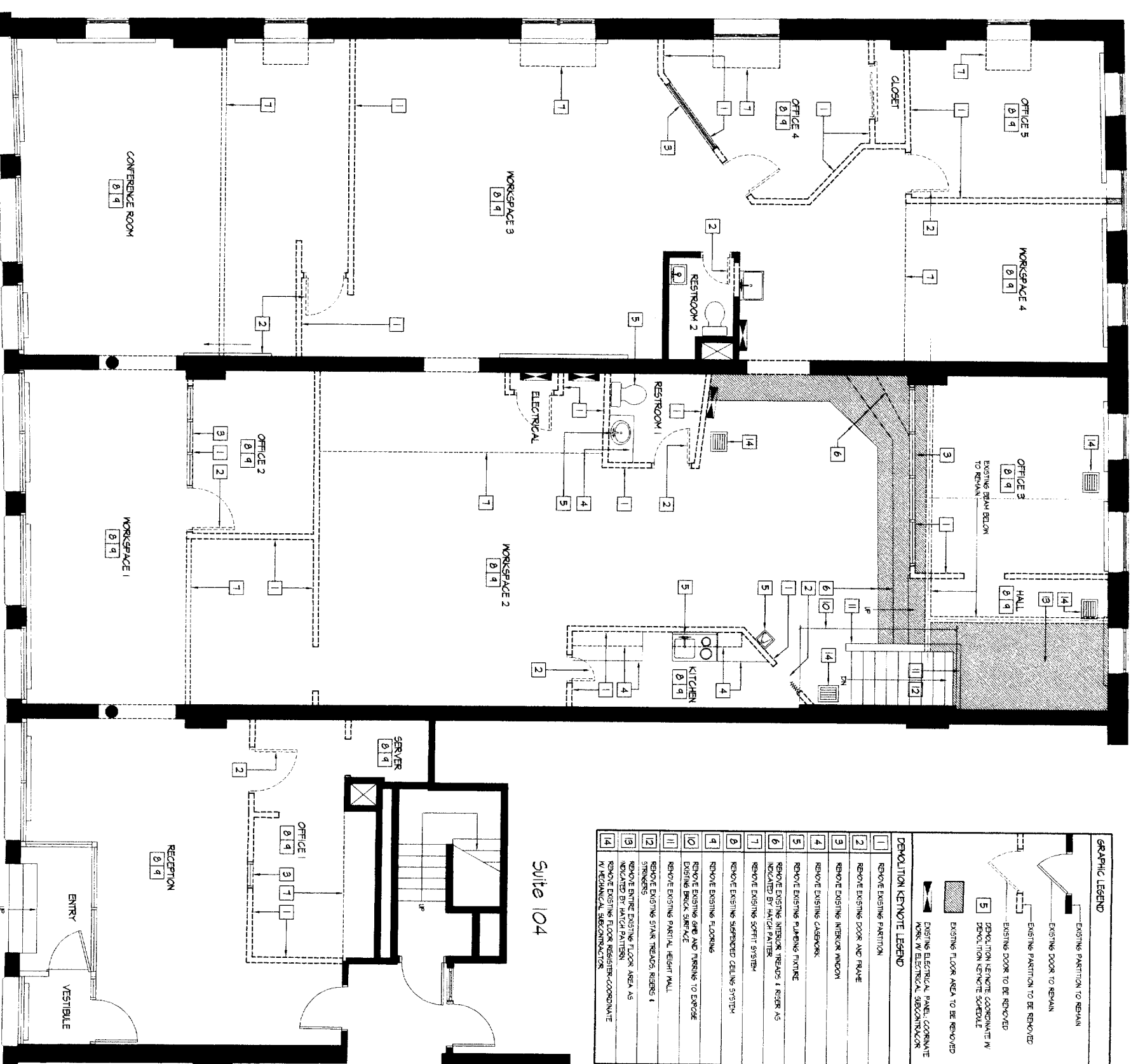
8 NOVEMBER 2004

GENERAL NOTES:

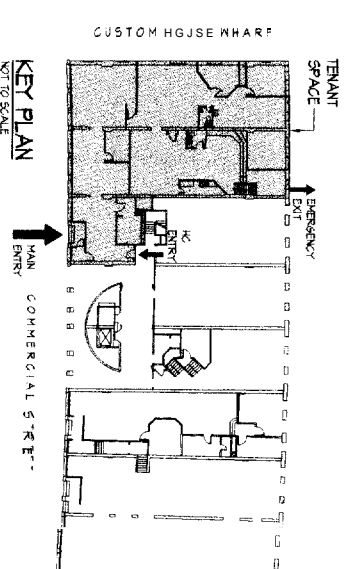


2 BASEMENT DEMOLITION PLAN
1/4" = 1'-0"

GRAPHIC LEGEND	
	EXISTING PARTITION TO REMAIN
	EXISTING DOOR TO REMAIN
	EXISTING PARTITION TO BE REMOVED
	EXISTING DOOR TO BE REMOVED
	DEMOLITION KENOTE COORDINATE IN DEMOLITION KENOTE SCHEDULE
	EXISTING FLOOR AREA TO BE REMOVED
	EXISTING ELECTRICAL PANEL COORDINATE WORK IN ELECTRICAL SUBCONTRACTOR
DEMOLITION KENOTE LEGEND	
1	REMOVE EXISTING PARTITION
2	REMOVE EXISTING DOOR AND FRAME
3	REMOVE EXISTING INTERIOR WINDOW
4	REMOVE EXISTING CABINET
5	REMOVE EXISTING PLUMBING FIXTURE
6	REMOVE EXISTING INTERIOR TREADS & RISER AS INDICATED BY HATCH PATTERN
7	REMOVE EXISTING SCOFFIT SYSTEM
8	REMOVE EXISTING SPRINKLED CEILING SYSTEM
9	REMOVE EXISTING FLOORING
10	REMOVE EXISTING GYM AND PARKING TO EXPOSE EXISTING BRICK SURFACE
11	REMOVE EXISTING PARTIAL HEIGHT WALL
12	REMOVE EXISTING STAIR TREADS RISERS & STRINGERS
13	REMOVE EXISTING FLOOR AREA AS INDICATED BY HATCH PATTERN
14	REMOVE EXISTING FLOOR REGISTER COORDINATE IN MECHANICAL SUBCONTRACTOR



1 FIRST FLOOR DEMOLITION PLAN
1/4" = 1'-0"



FORESIDE
ARCHITECTS, LLC
ARCHITECTURE / PLANNING / INTERIOR DESIGN
P.O. Box 66736
Farmington, Maine 04906
Phone 207.751-3341
Fax 207.751-4773
Celling *
Internet: foreside.com

Project Status:
CONSTRUCTION
PERMIT SET
Project Number:
Project Title:
100 Commercial Street
Portland, Maine



Drawing Name:
DEMOLITION PLANS FIRST
FLOOR AND BASEMENT

Scale:
1/4" = 1'-0"
Date:
5 NOVEMBER 2004
SHEET
D1.1

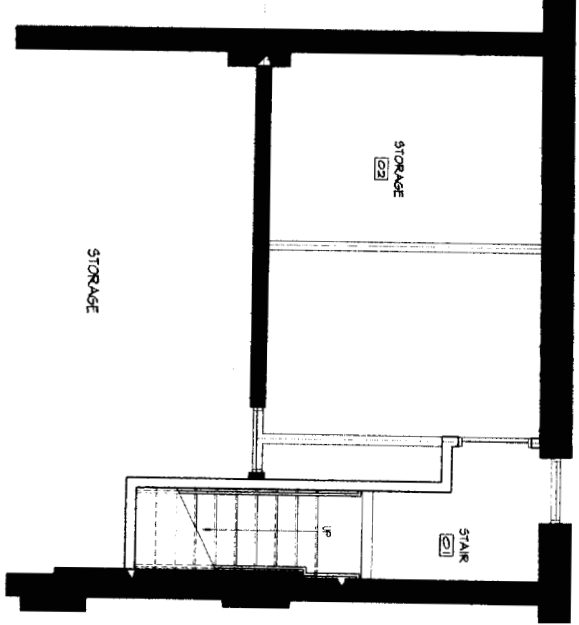
GENERAL NOTES:

LIGHTING FIXTURE LEGEND

- 1. HANGING PENDANT, RECESSED STEEL SUSPENSION, 1" DIA. CAN, 1" DIA. DOWNWARD BULB
- 2. HANGING PENDANT, RECESSED STEEL SUSPENSION, 1" DIA. CAN, 1" DIA. DOWNWARD BULB
- 3. LIGHT TOWER, OR EQUAL, 4" APERTURE, ALUMINUM, 1" DIA. CAN, 1" DIA. DOWNWARD BULB
- 4. CLING MOUNTED SHADE BALL FIXTURE
- 5. SPINNER SELECTION BY OWNER
- 6. SURFACE MOUNTED CAN, SHALLOW APERTURE, BLACK
- 7. RECESSED 2'X4' FLUORESCENT FIXTURE
- 8. TRACK LIGHTING, 4" DIA. 1" DIA. LENGTHS, LINE VOLTAGE, BASIC CYLINDER, BLACK
- 9. 6" DIA. 1" DIA. 1" DIA.

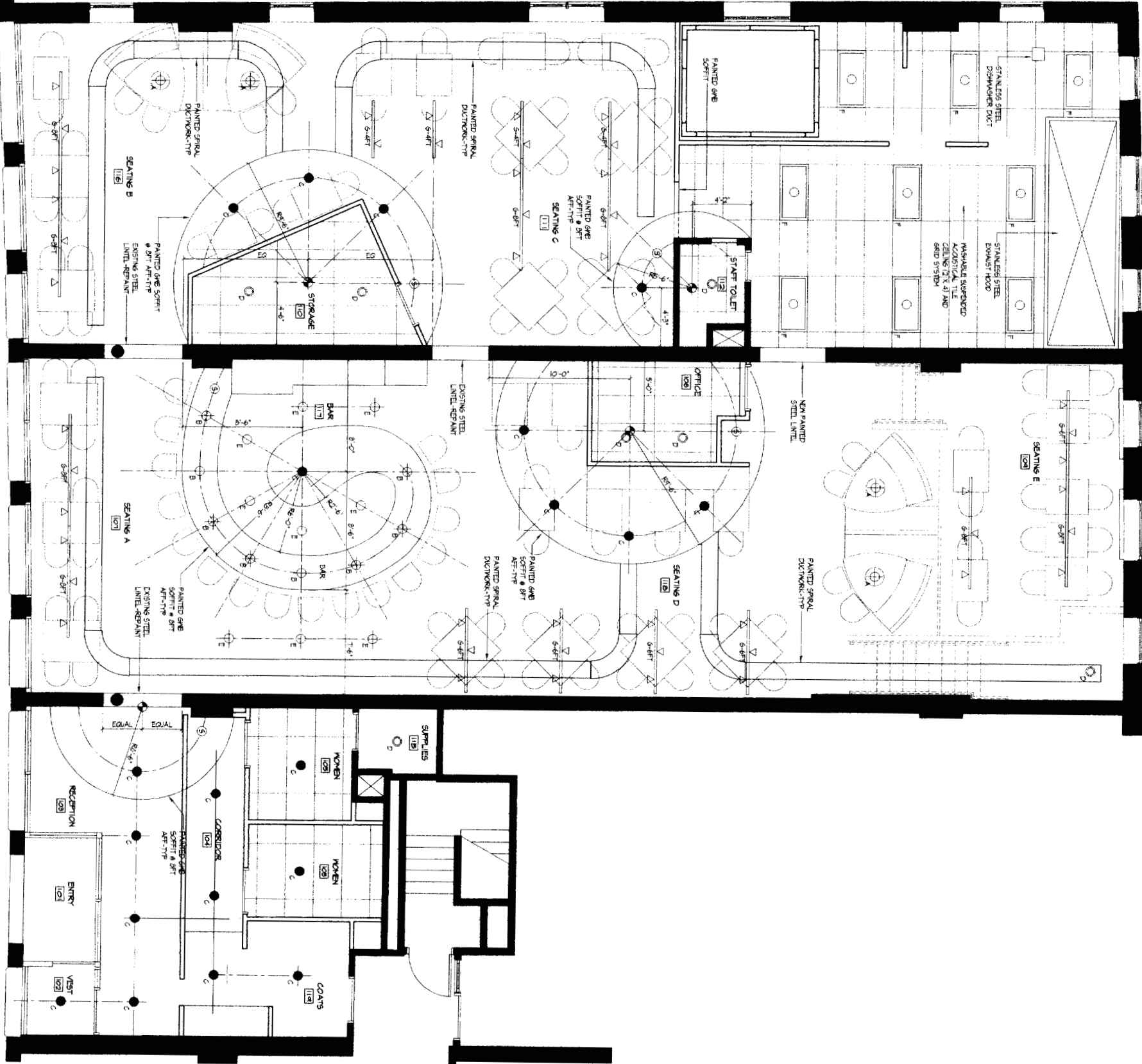
PROPOSED BASEMENT PLAN

2
SCALE: 1/4" = 1'-0"



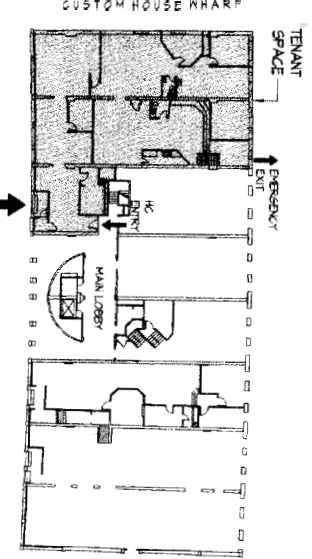
1
SCALE: 1/4" = 1'-0"

PROPOSED FIRST REFLECTED CEILING PLAN



KEY PLAN
NOT TO SCALE

MAIN ENTRY
COMMERCIAL STREET



FORESIDE
ARCHITECTS, LLC

ARCHITECTS, PLANNING, INTERIOR DESIGN

PRO BUREAU
1000 Commercial Street
Portland, Maine 04105
Tel: 603.761.1344
Fax: 603.761.1344
www.forsidearchitects.com



Project Status:
CONSTRUCTION
PERMIT SET

Project Number:
100 Commercial Street



Project Title:
100 Commercial Street
Portland, Maine

Drawing Name:
FIRST FLOOR PLAN AND
BASEMENT REFLECTED CEILING PLAN

Scale:
1/4" = 1'-0"

Date:
5 NOVEMBER 2004

SHEET
A2.1