

ELITE AIRWAYS TENANT FITOUT
TENANT FITOUT
50 PORTLAND PIER | THIRD FLOOR
ATLANTIC NATIONAL TRUST, LLC



PORTLAND, ME 04102
TRACIE REED, ARCHITECT
NCARB, AIA, LEED AP BD+C
traciereed@dextrouscreative.com
207.409.0459 (cell)

JIM HANLEY | BUILDING
REPRESENTATIVE
ATLANTIC NATIONAL TRUST, LLC
jhanley@atlanticonationaltrust.com
207.553.2000 x 208 (O)
207.328.0298 (C)

KARA KITCHEN | LEASEHOLD
REPRESENTATIVE
ELITE AIRWAYS
kara@eliteairways.net
207.842.6400 (O)

No.	Description	Date
01	REDUCED SCOPE	05.14.15

THIRD FLOOR
PLAN

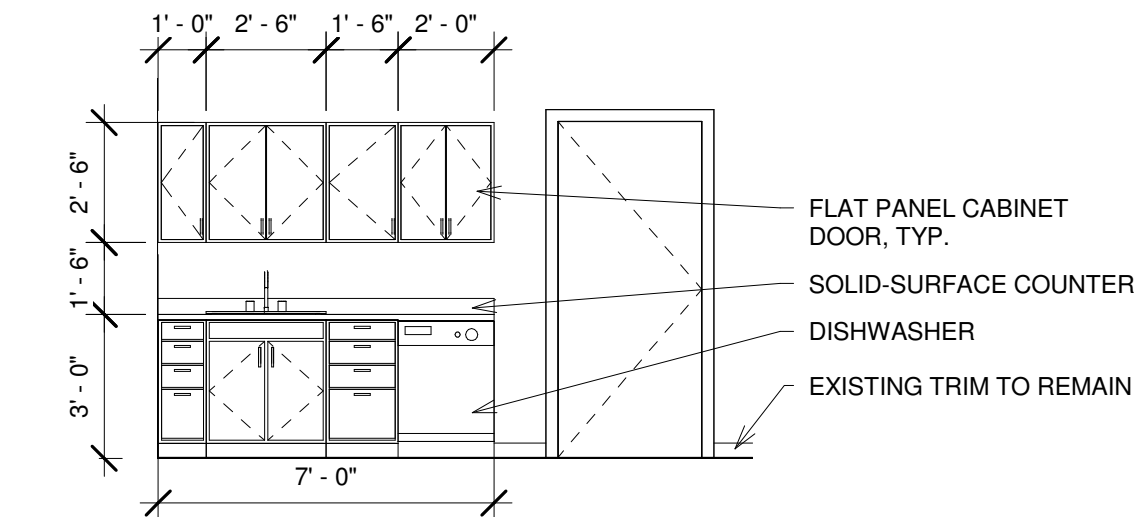
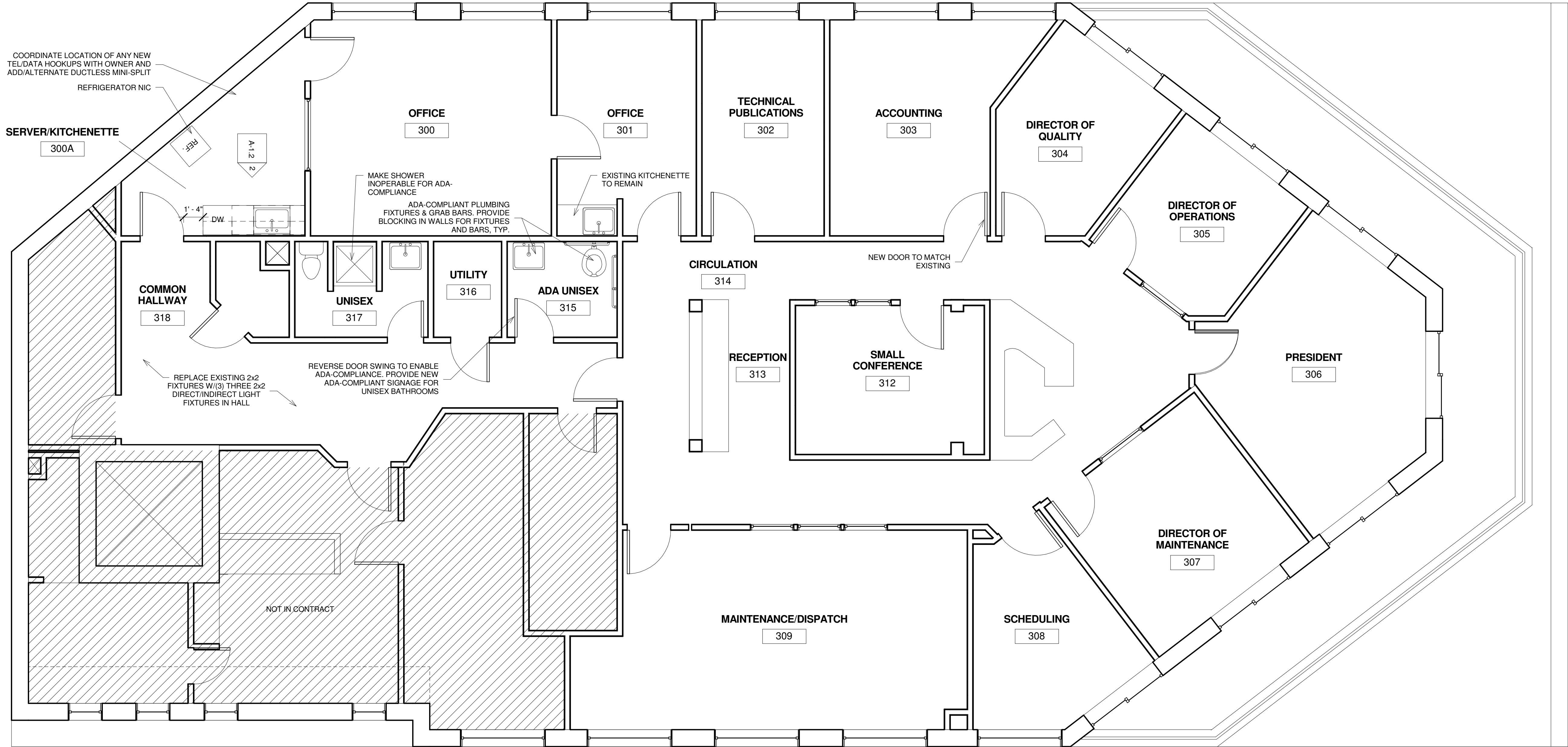
Project number 15-06
Date 05.14.15
Drawn by Author
Checked by Checker

A-1.2

Scale 1/4" = 1'-0"

5/15/2015 2:27:43 PM

1 CONCEPT D
1/4" = 1'-0"



2 KITCHENETTE ELEVATION
1/4" = 1'-0"

- GENERAL NOTES
- 1) ALL WALLS ARE TYPE A, UNO
 - 2) DOORS ARE 2" FROM WALL UNLESS UNO
 - 3) ALIGN NEW WALLS WITH EXISTING
 - 4) NEW CARPET AND PAINT THROUGHOUT. COORDINATE COLORS/PATTERN SELECTION WITH OWNER
 - 5) REPLACE EXISTING KNOB HANDLES WITH LEVER-STYLE DOOR HANDLES IN COMMON AREA.