

ELITE AIRWAYS TENANT FITOUT
TENANT FITOUT
50 PORTLAND PIER | THIRD FLOOR
ATLANTIC NATIONAL TRUST, LLC



PORTLAND, ME 04102
TRACIE REED, ARCHITECT
NCARB, AIA, LEED AP BD+C
traciereed@dextrouscreative.com
207.409.0459 (cell)

JIM HANLEY | BUILDING
REPRESENTATIVE
ATLANTIC NATIONAL TRUST, LLC
Jhanley@atlanticonationaltrust.com
207.553.2000 x 208 (O)
207.328.0298 (C)

IAN MCCracken | GENERAL
CONTRACTOR
LANDRY FRENCH CONSTRUCTION
imccracken@landryfrenchconstruction.com
207.730.5566 x 110 (O)
207.400.6500 (C)

KARA KITCHEN | LEASEHOLD
REPRESENTATIVE
ELITE AIRWAYS
kara@eliteairways.net
207.842.6400 (C)

No.	Description	Date

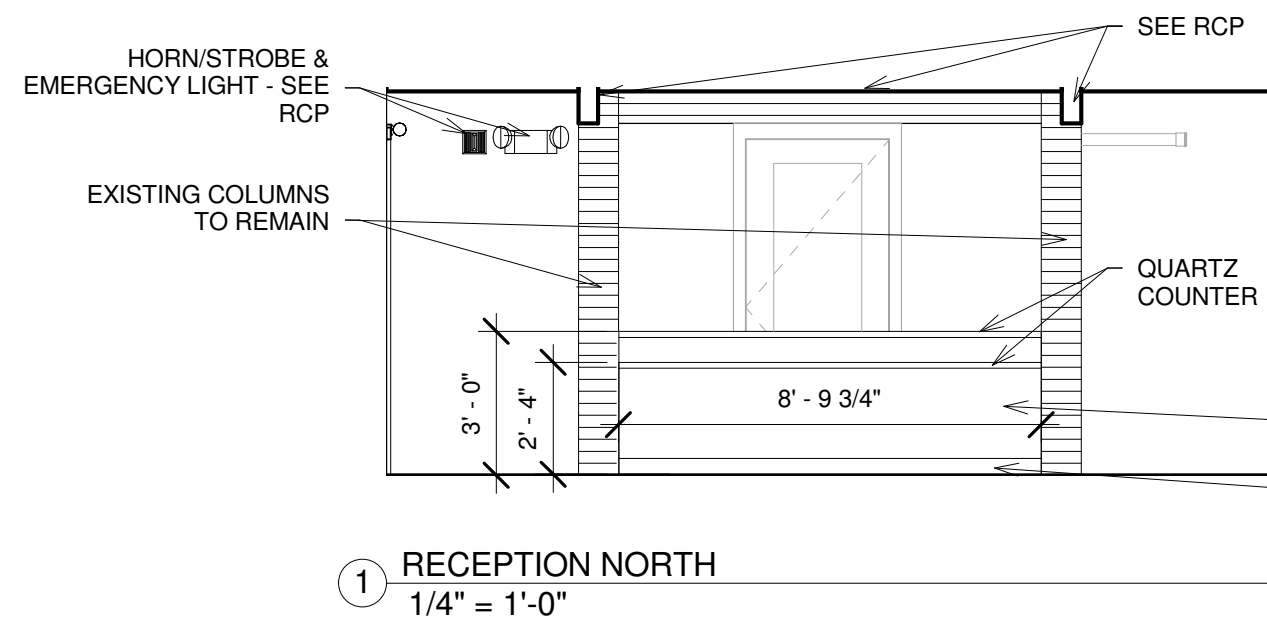
INTERIOR
ELEVATIONS

Project number	15-06
Date	04.13.15
Drawn by	Author
Checked by	Checker

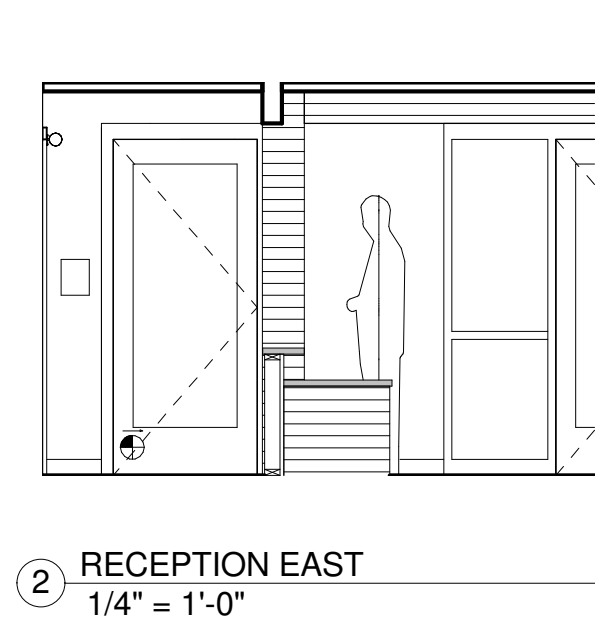
A-4.1

Scale 1/4" = 1'-0"

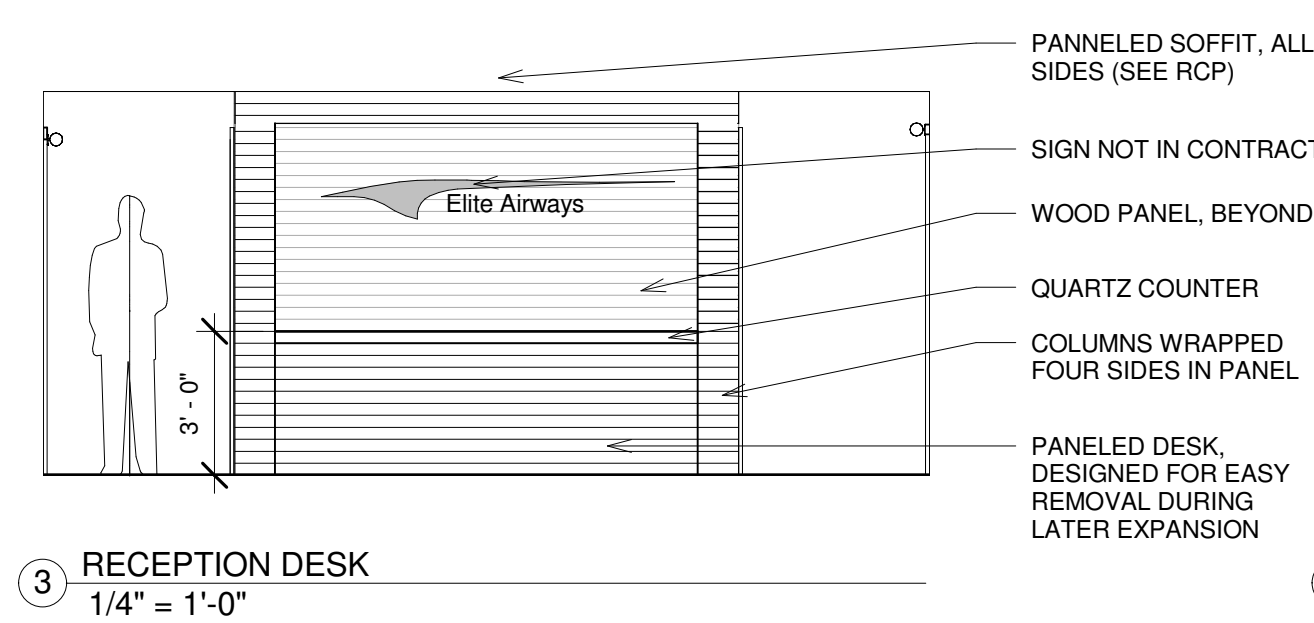
4/13/2015 9:51:33 PM



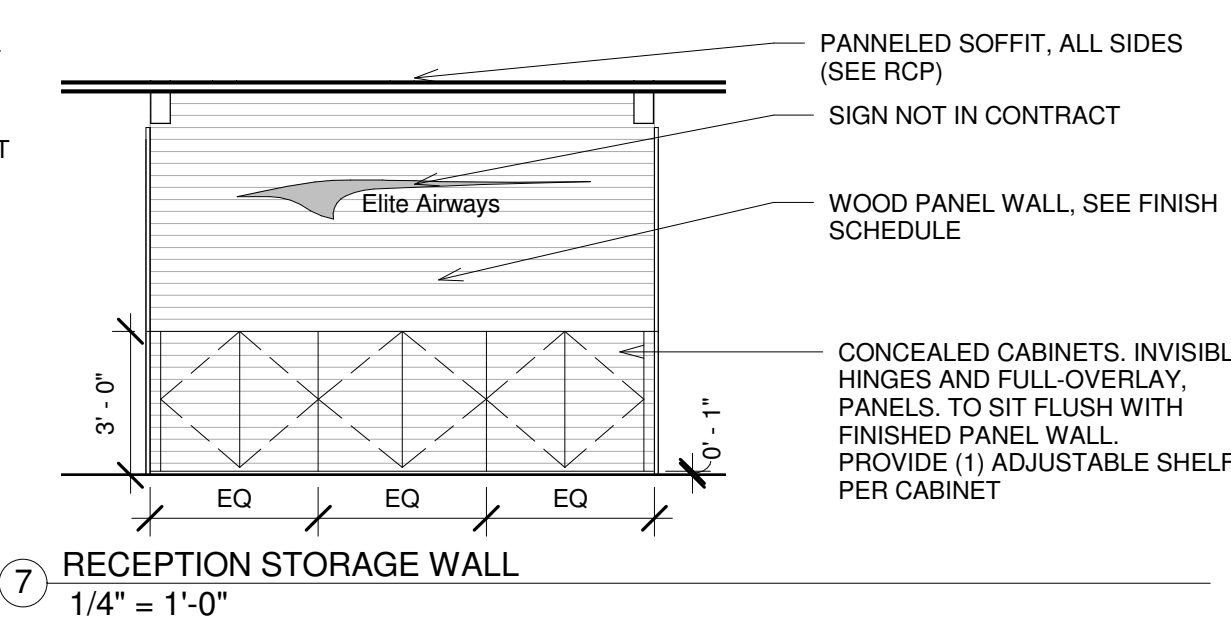
① RECEPTION NORTH
1/4" = 1'-0"



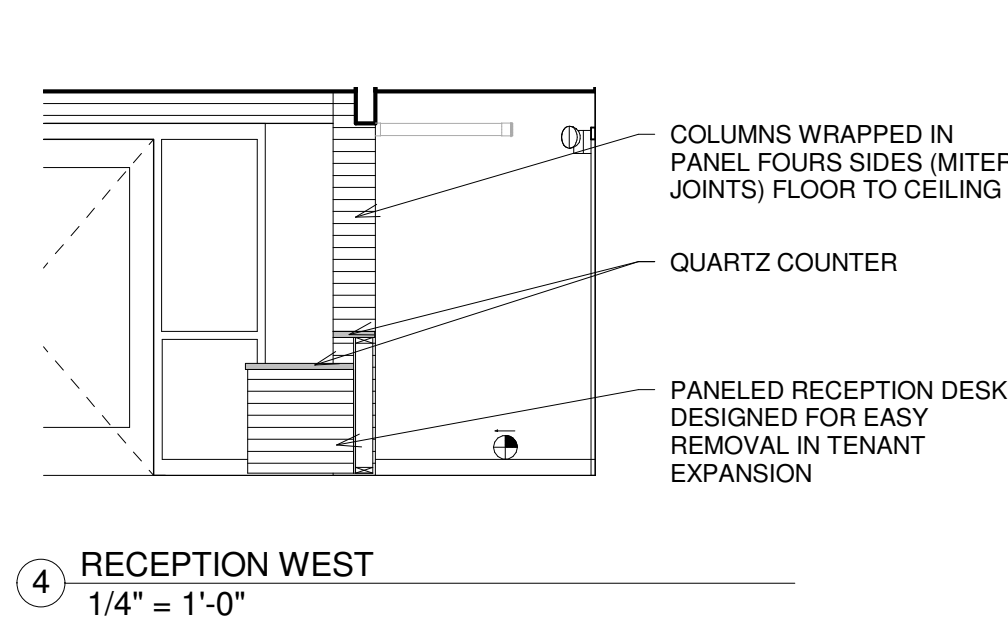
② RECEPTION EAST
1/4" = 1'-0"



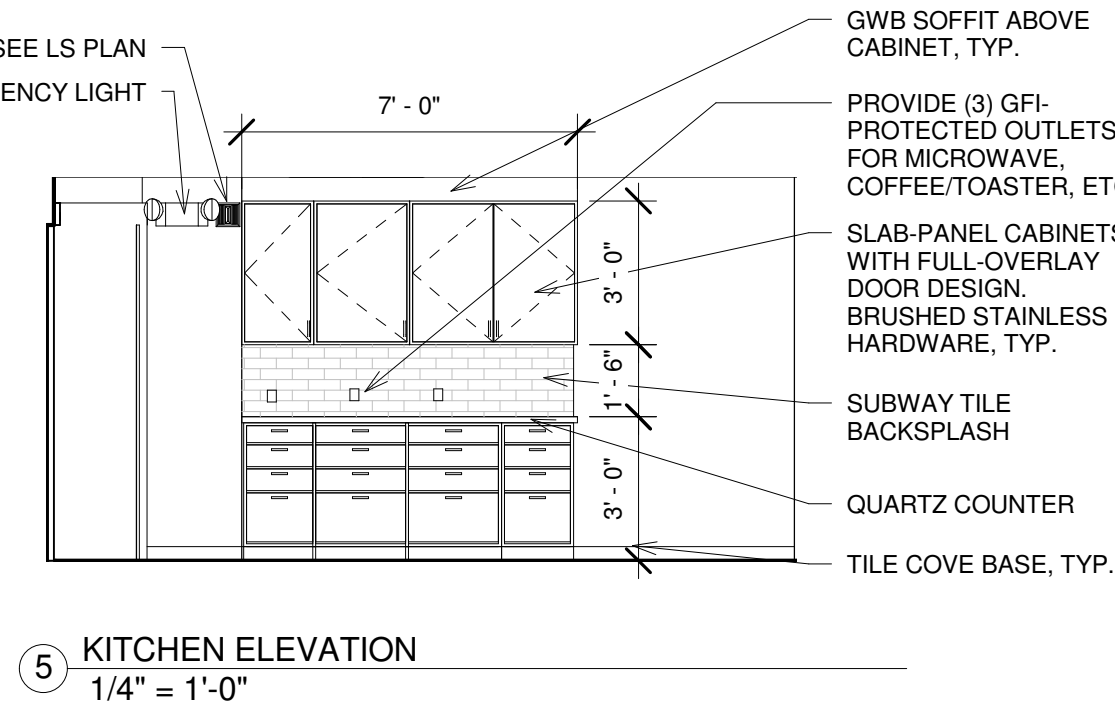
③ RECEPTION DESK
1/4" = 1'-0"



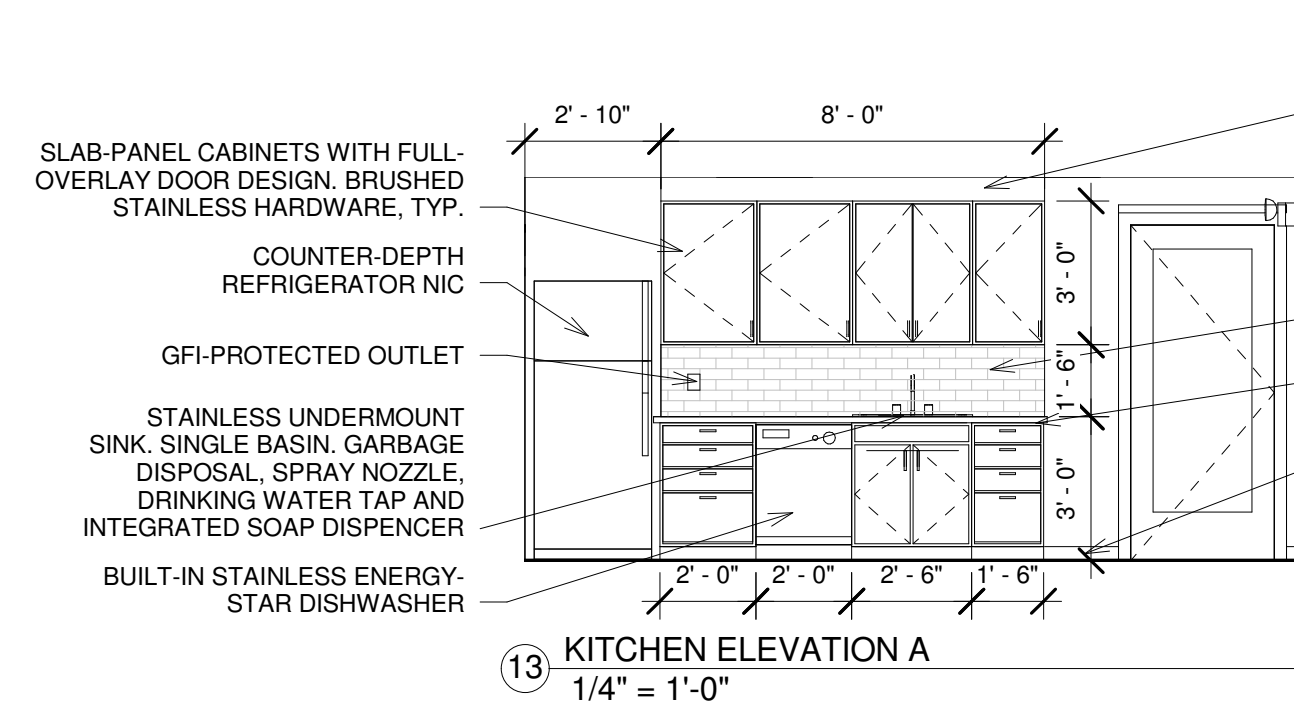
④ RECEPTION WEST
1/4" = 1'-0"



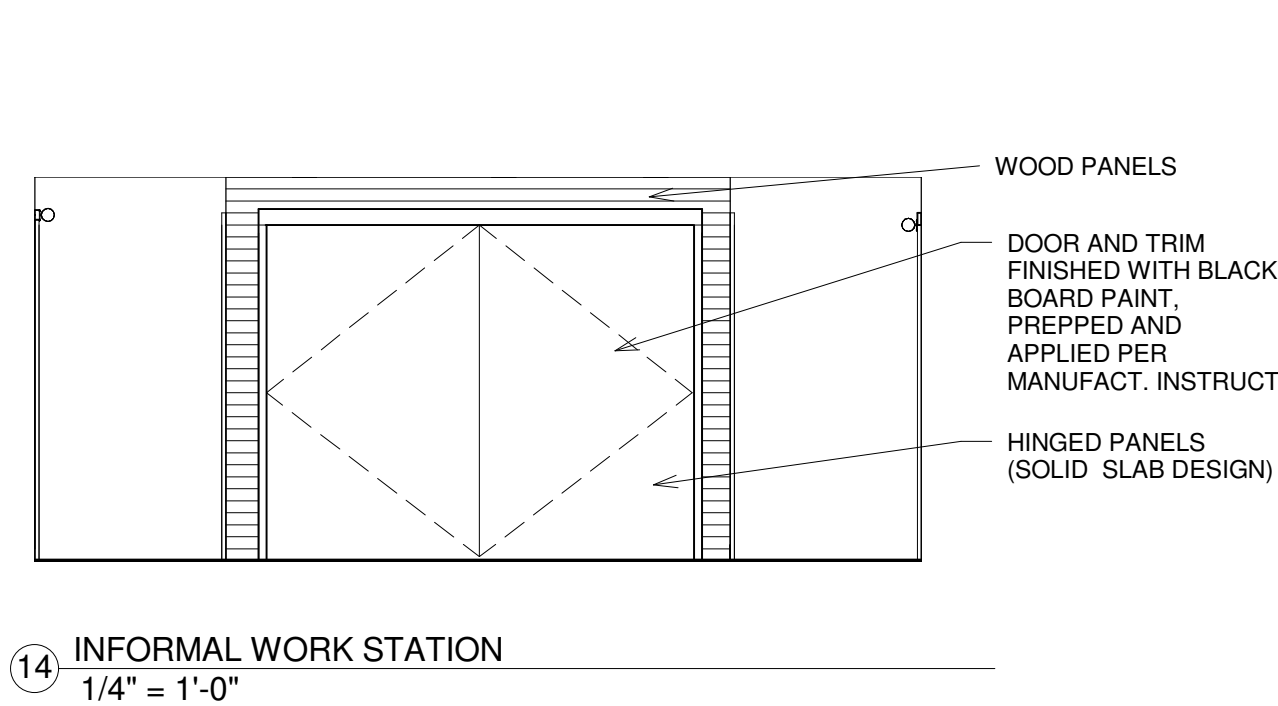
⑤ KITCHEN ELEVATION
1/4" = 1'-0"



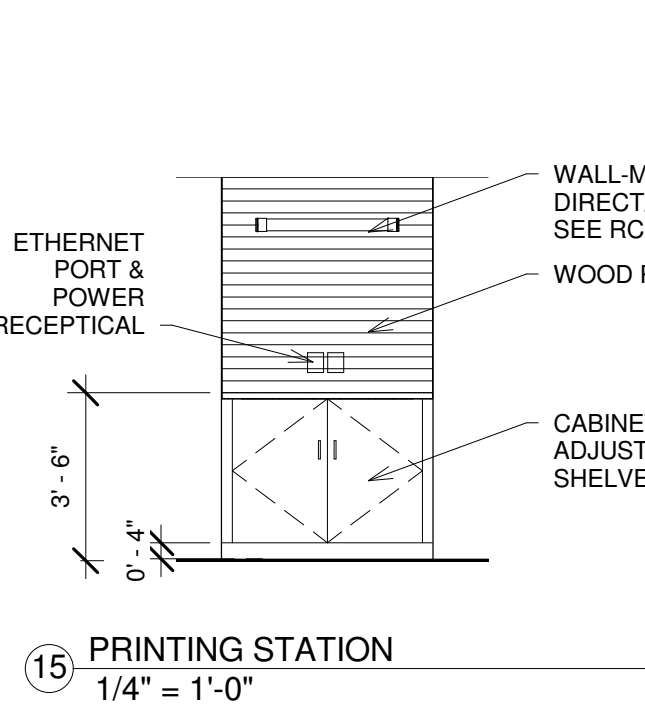
⑬ KITCHEN ELEVATION A
1/4" = 1'-0"



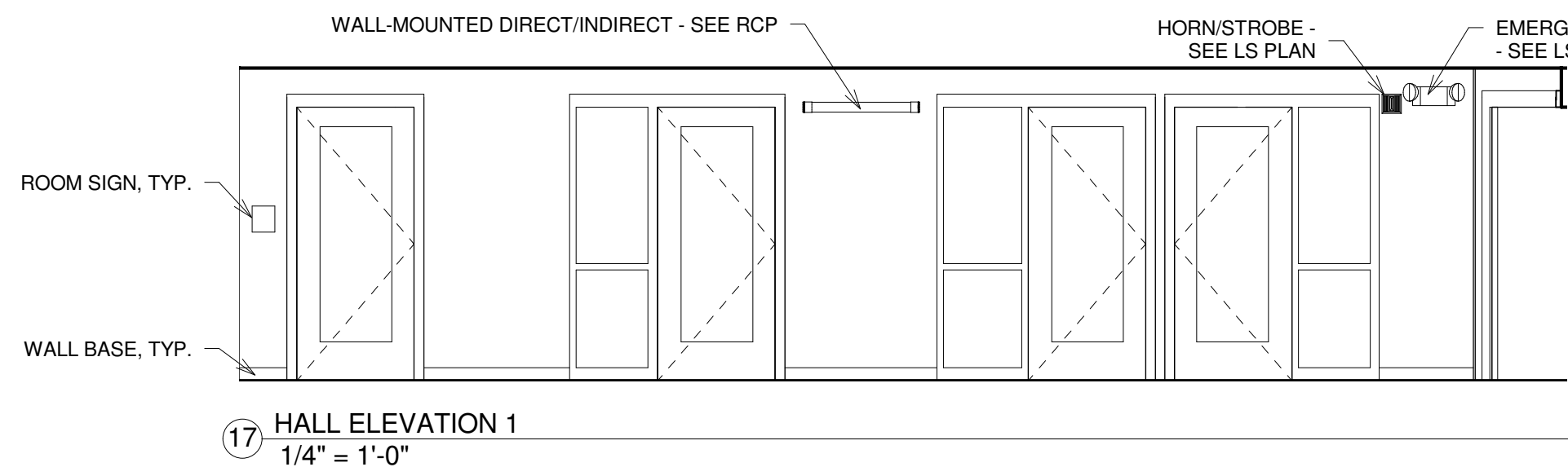
⑭ INFORMAL WORK STATION
1/4" = 1'-0"



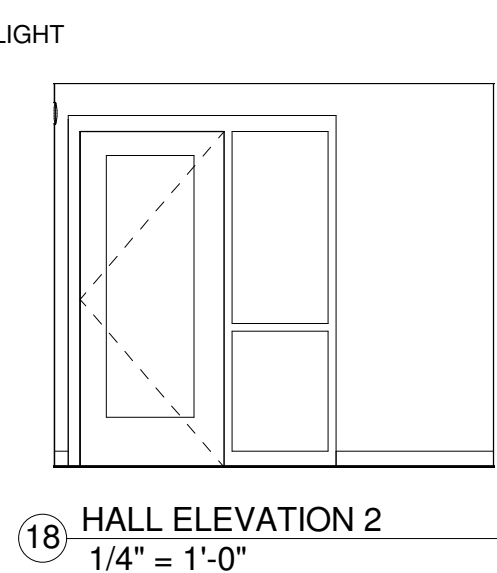
⑮ PRINTING STATION
1/4" = 1'-0"



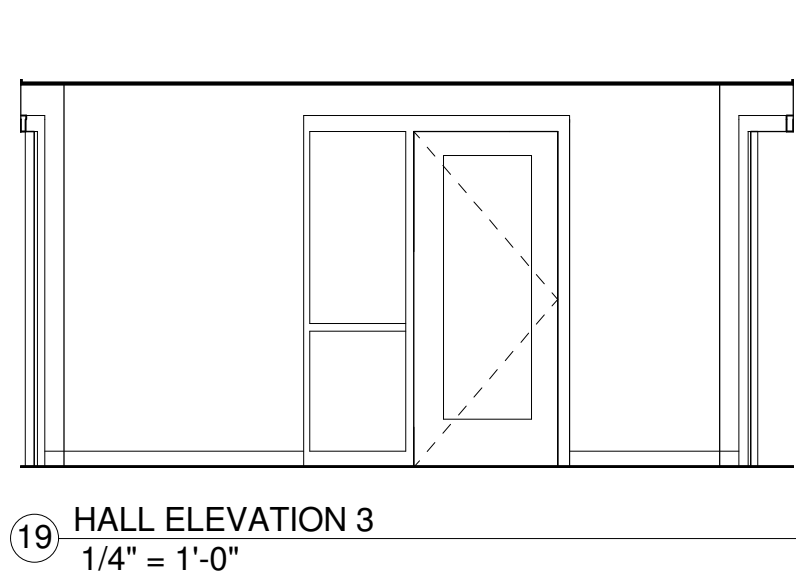
⑰ HALL ELEVATION 1
1/4" = 1'-0"



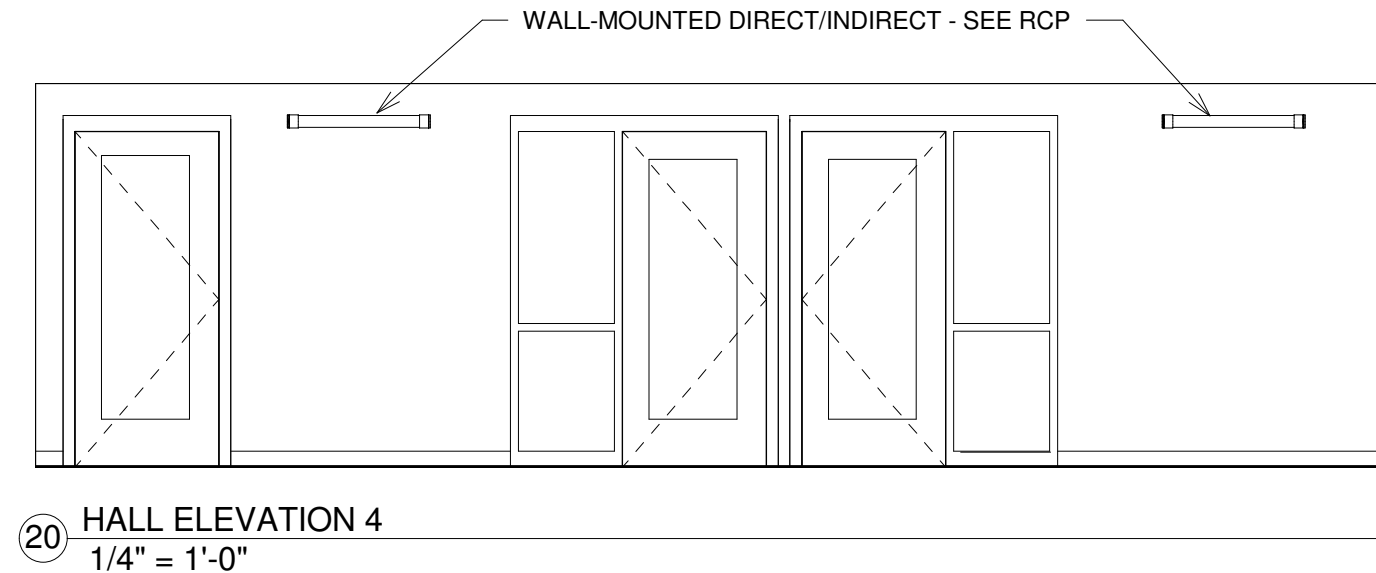
⑱ HALL ELEVATION 2
1/4" = 1'-0"



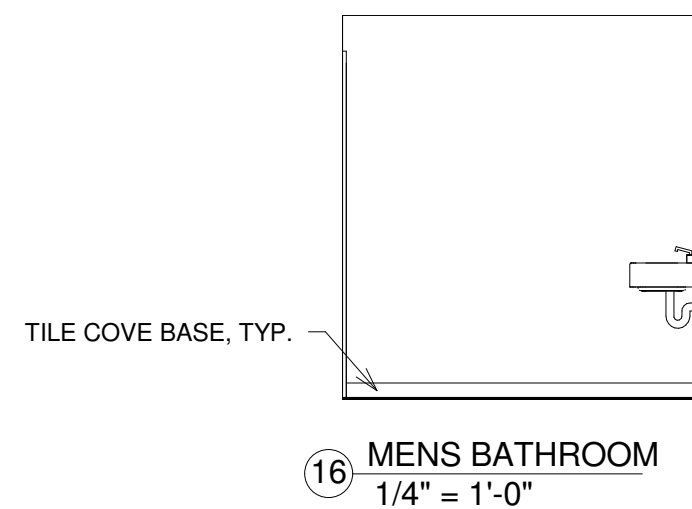
⑲ HALL ELEVATION 3
1/4" = 1'-0"



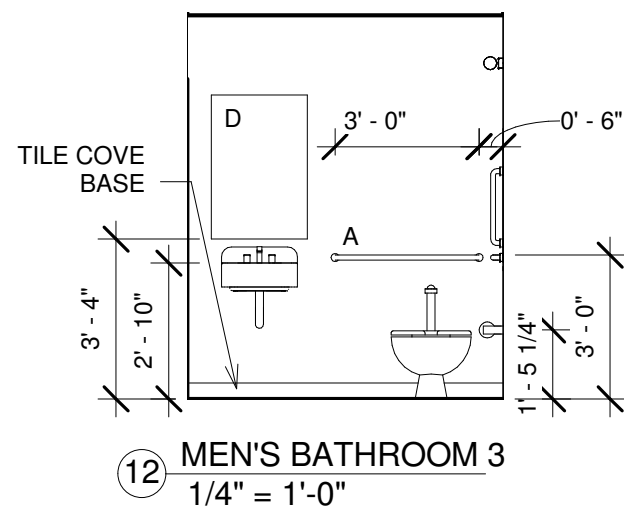
⑳ HALL ELEVATION 4
1/4" = 1'-0"



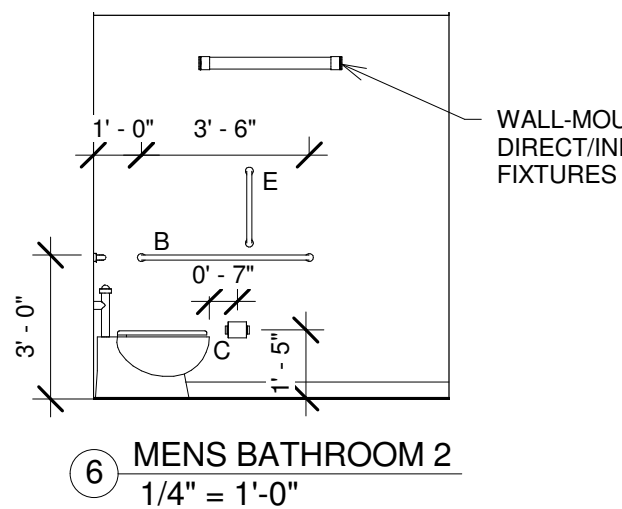
⑯ MENS BATHROOM
1/4" = 1'-0"



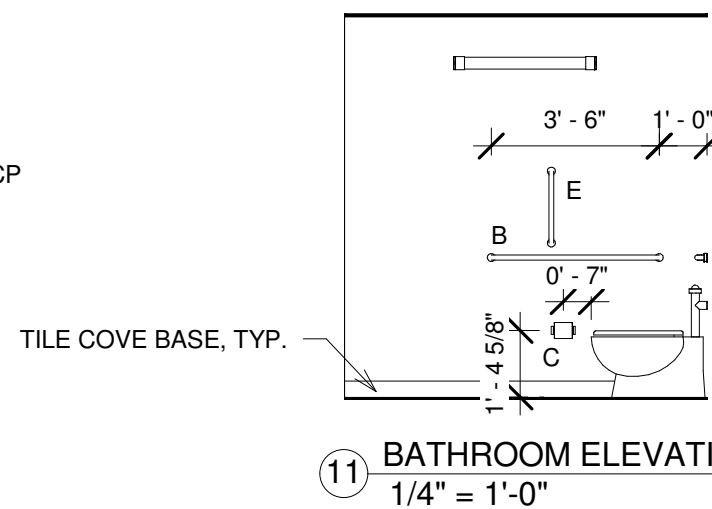
⑫ MEN'S BATHROOM 3
1/4" = 1'-0"



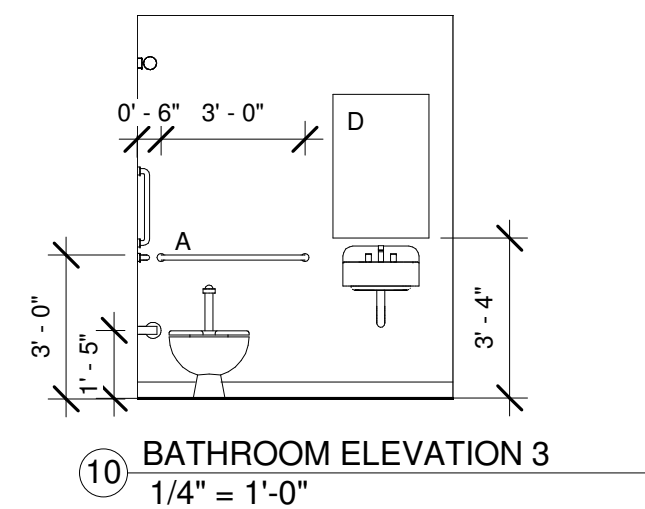
⑥ MENS BATHROOM 2
1/4" = 1'-0"



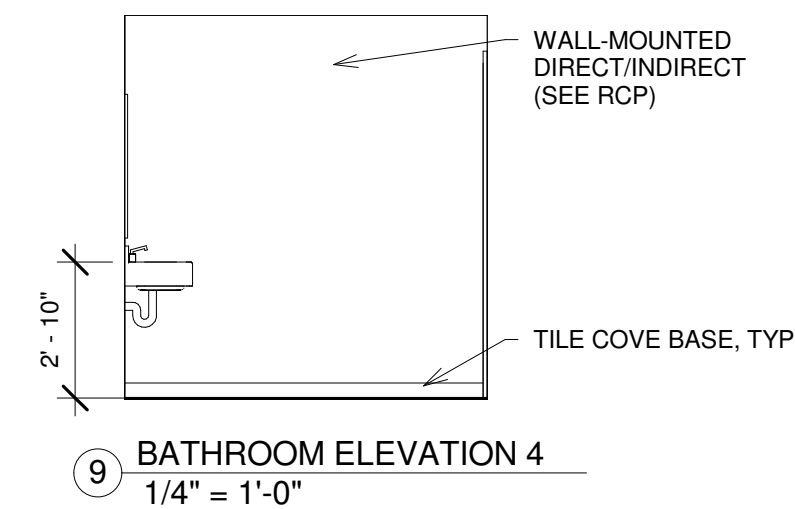
⑪ BATHROOM ELEVATION 2
1/4" = 1'-0"



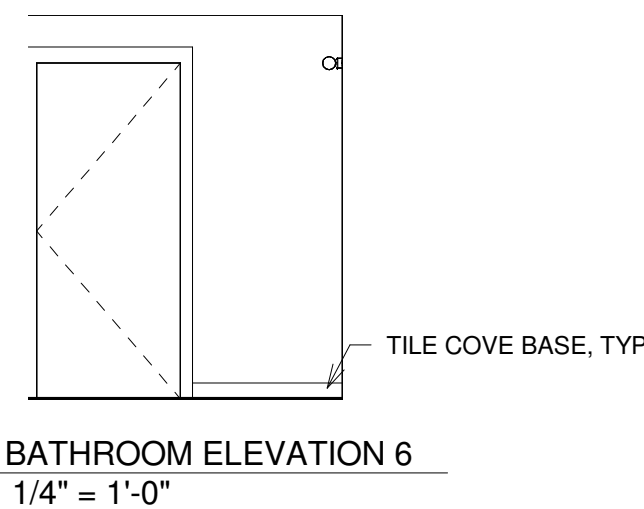
⑩ BATHROOM ELEVATION 3
1/4" = 1'-0"



⑨ BATHROOM ELEVATION 4
1/4" = 1'-0"



⑧ BATHROOM ELEVATION 6
1/4" = 1'-0"



GENERAL BATHROOM NOTES

1. PROVIDE SOLID BLOCKING FOR ALL WALL MOUNTED/HUNG FIXTURES OR BRACKETS.
2. FINISHES PER OWNER
3. CEILING TO CONSIST OF 2x2 ACT - SEE RCP
4. ALL FIXTURE HEIGHTS AND CLEARANCES ARE DIMENSIONED FROM FINISHED FACE.
5. PARTITIONS TO TERMINATE 6" ABOVE ACT
6. PROVIDE BATT INSULATION ABOVE ACT FOR ACOUSTICAL SEPARATION. INSULATION & FACING SHALL HAVE A FLAME SPREAD RATING OF 25 (OR LESS) AND A SMOKE DEVELOPED INDEX OF 450 OR LESS WHEN TESTED PER ASTM E 84 OR UL8723.
7. PROVIDE ADA-COMPLIANT SIGNAGE ON EXTERIOR DOORS

BATHROOM LEGEND

- A. 3'-0" GRAB BAR
- B. 3'-6" GRAB BAR
- C. TOILET PAPER DISPENSER
- D. WALL-MOUNTED MIRROR
- E. VERTICAL GRAB BAR

