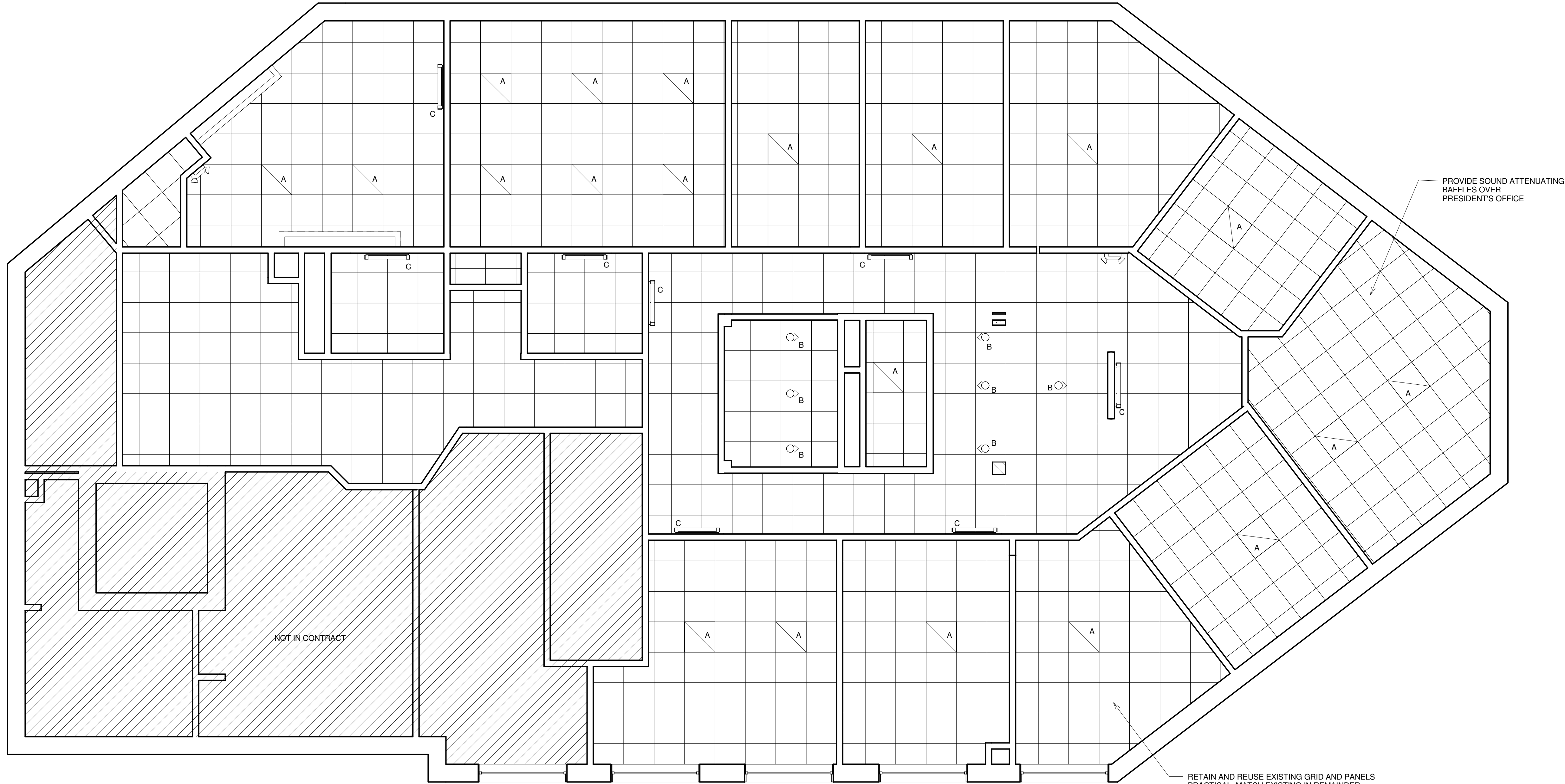
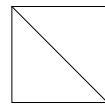


1 EXISTING THIRD FLOOR PLAN
1/4" = 1'-0"



GENERAL RCP / LIGHTING CONTROL NOTES

- 1) PROVIDE SEPERATE SWITCHES IN AREAS WITH TWO ROWS OF LIGHTS ARE USED SO THAT LIGHTS NEAREST EXTERIOR WALL CAN BE CONTROLLED SEPERATELY FROM ROW OF LIGHTS NEAREST INTERIOR WALL. EXAMPLES: CONFERENCE ROOM AND KITCHEN.
- 2) PROVIDE SEPERATE SWITCHES FOR WALL-MOUNTED FIXTURES ALONG EAST AND WEST INTERIOR COORIDOR.
- 3) PROVIDE SEPERATE SWITCH FOR WALL-WASH GANS IN RECEPTION AREA
- 4) PROVIDE SEPERATE SWITCH FOR WALL-MOUNTED FIXTURE OVER PRINTER
- 5) PROVIDE SWITCH FOR RECESSED GANS IN INFORMAL-MEETING AREA
- 6) PROVIDE SOUND ATTENUATING BAFFLES OVER BATHROOMS, AND PRESIDENT'S OFFICE



A | 2x2
DIRECT/INDIRECT

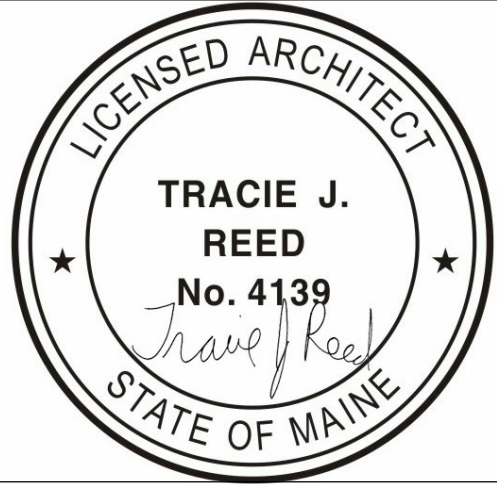
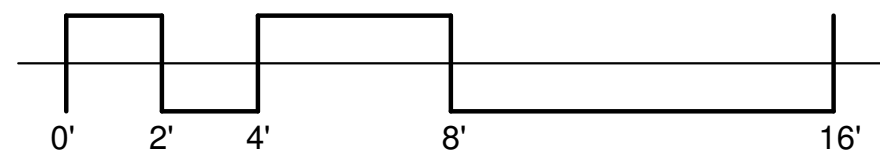


B | RECESSED WALL
WASHER



C | WALL-MOUNTED
DIRECT/INDIRECT FIXTURE
3'-0" LONG. MOUNT IN LINE
WITH TOPS OF DOOR TRIM

LIGHTING LEGEND
1/4" = 1'-0"



ELITE AIRWAYS TENANT FITOUT
TENANT FITOUT
50 PORTLAND PIER | THIRD FLOOR
ATLANTIC NATIONAL TRUST, LLC



DEXTROUS
CREATIVE

PORTLAND, ME 04102
TRACIE REED, ARCHITECT
NCARB, AIA, LEED AP BD+C
traciereed@dextrouscreative.com
207.409.0459 (cell)

JIM HANLEY | BUILDING
REPRESENTATIVE
ATLANTIC NATIONAL TRUST, LLC
Jhanley@atlanticonationaltrust.com
207.553.2000 x 208 (O)
207.328.0298 (C)

IAN MCCrackEN | GENERAL
CONTRACTOR
LANDRY FRENCH CONSTRUCTION
imccracken@landryfrenchconstruction.com
207.730.5566 x 110 (O)
207.400.6500 (C)

KARA KITCHEN | LEASEHOLD
REPRESENTATIVE
ELITE AIRWAYS
kara@eliteairways.net
207.842.6400 (C)

No.	Description	Date

REFLECTED
CEILING PLAN

Project number 15-06
Date 04.13.15
Drawn by Author
Checked by Checker

A-1.3

Scale 1/4" = 1'-0"