

ELITE AIRWAYS TENANT FITOUT
TENANT FITOUT
50 PORTLAND PIER | THIRD FLOOR
 ATLANTIC NATIONAL TRUST, LLC



**DEXTRIOUS
 CREATIVE**

PORTLAND, ME 04102
 TRACIE REED, ARCHITECT
 NCARB, AIA, LEED AP BD+C
 traciereed@dextrouscreative.com
 207.409.0459 (cell)

**JIM HANLEY | BUILDING
 REPRESENTATIVE**
 ATLANTIC NATIONAL TRUST, LLC
 jhanley@atlanticnationaltrust.com
 207.553.2000 x 208 (O)
 207.328.0298 (C)

**IAN MCCrackEN | GENERAL
 CONTRACTOR**
 LANDRY FRENCH CONSTRUCTION
 imccracken@landryfrenchconstruction.com
 207.730.5566 x 110 (O)
 207.400.8500 (C)

**KARA KITCHEN | LEASEHOLD
 REPRESENTATIVE**
 ELITE AIRWAYS
 kara@eliteairways.net
 207.842.6400 (C)

No.	Description	Date

**THIRD FLOOR
 PLAN**

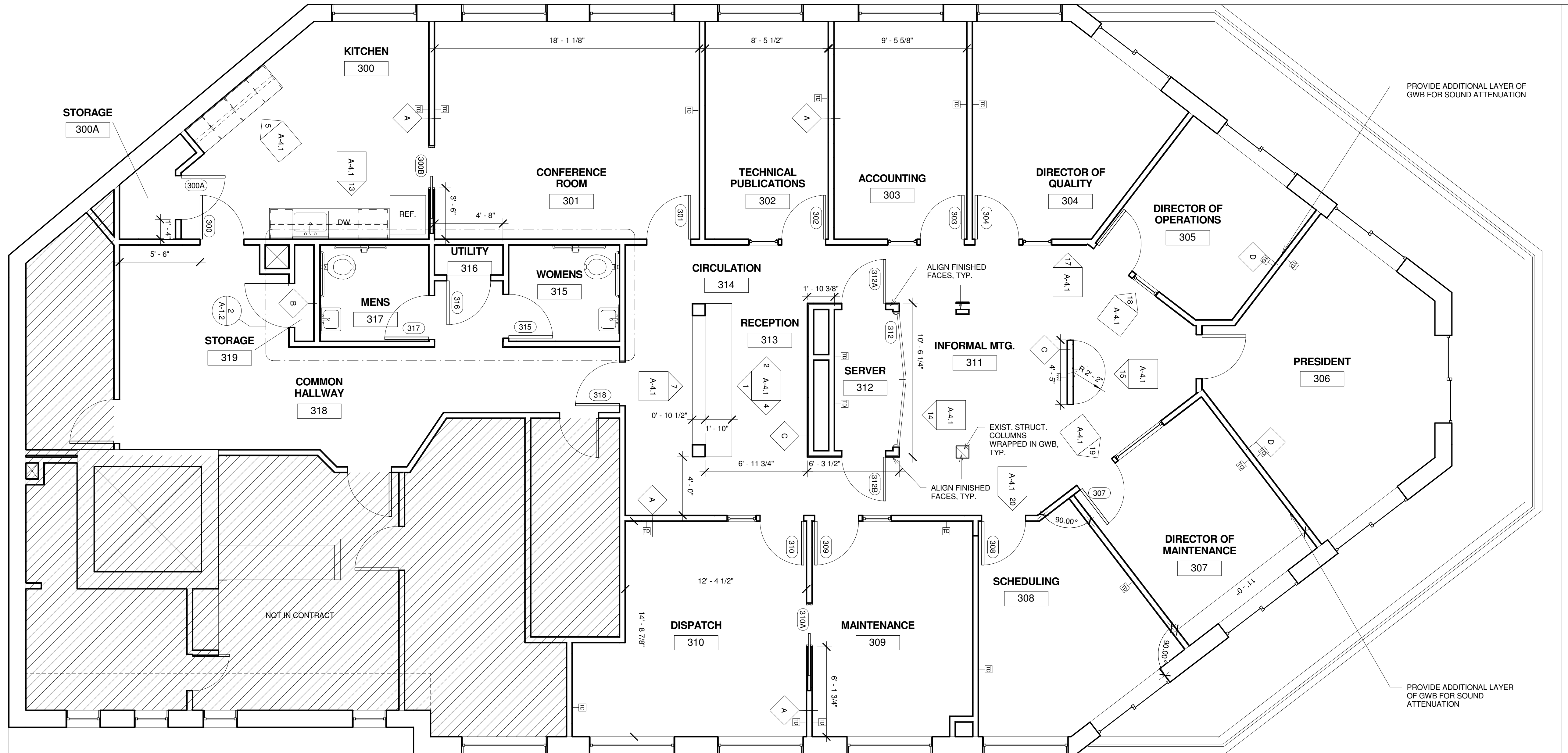
Project number 15-06
 Date 04.13.15
 Drawn by Author
 Checked by Checker

A-1.2

Scale As indicated

4/13/2015 9:51:29 PM

1 CONCEPT D
 1/4" = 1'-0"



GENERAL NOTES
 1) ALL WALLS ARE TYPE A, UNO
 2) DOORS ARE 2" FROM WALL UNLESS UNO
 3) DIMENSIONS FROM EXISTING WALLS ARE FROM FACE OF FINISHED WALL
 4) DIMENSIONS FROM NEW WALLS ARE TO FACE OF STUD, EXCEPT RESTROOMS WHERE DIMENSIONS FROM PLUMBING FIXTURES ARE TAKEN FROM FINISHED FACE TO ENSURE ADA-COMPLIANCE.

2 ENLARGED PLAN - BATHROOMS
 1/2" = 1'-0"

