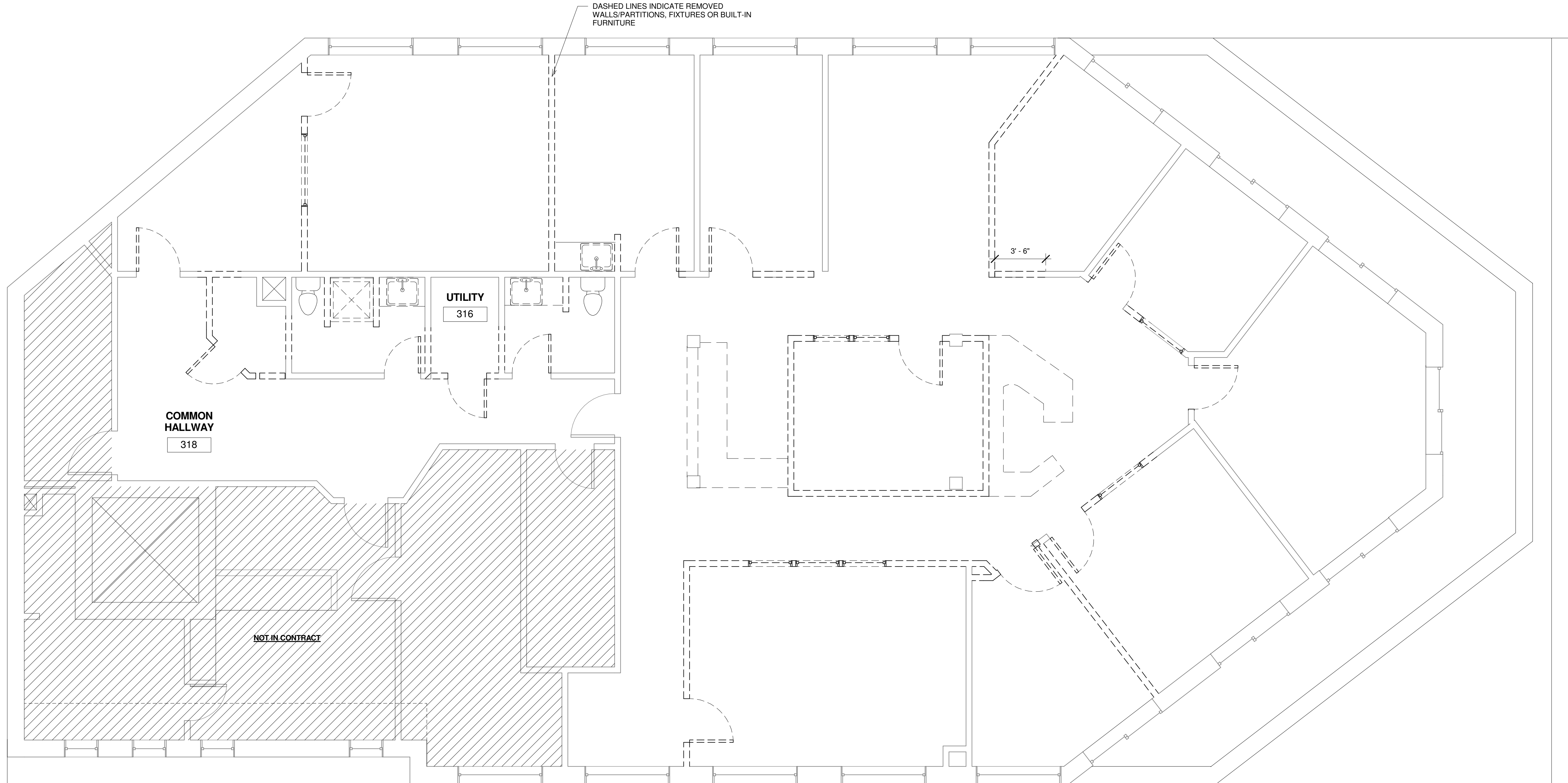
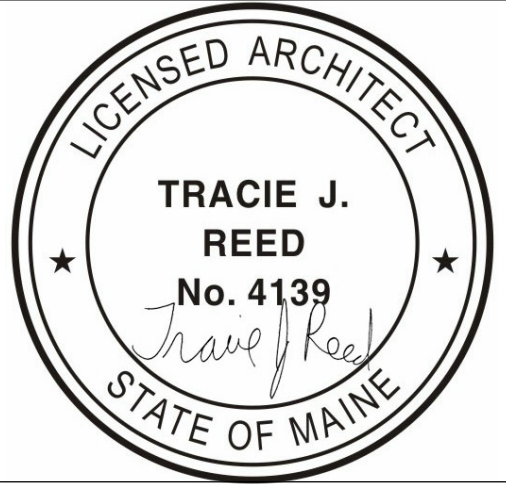
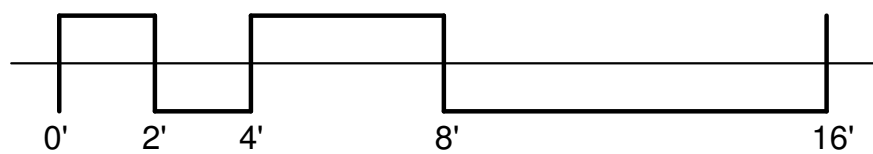


1 EXISTING/DEMO PLAN
1/4" = 1'-0"



- DEMOLITION SCOPE NOTES**
- LIMITED SCOPE OF WORK IN COMMON HALLWAY (ROOM 318). RETAIN ACT AND GRID. PATCH WALLS, CARPET AND PAINT TO MATCH EXISTING.
 - IN UTILITY ROOM (ROOM 316) RELOCATE MECHANICALS, TEL/DATA AND ALL SERVICES TO ACCOMMODATE REDUCED SIZE OF COMPLETED ROOM AS SHOWN IN DRAWINGS.
 - IN REMAINDER SALVAGE ACT GRID AND TILES WHERE FEASIBLE. SALVAGE LIFE SAFETY PULLS, AND HORN/STROBES FOR REINSTALLATION. REMOVE ALL CARPET/FLOORING, TRIM, LIGHT FIXTURES, AND WINDOW SHADING DEVICES.



ELITE AIRWAYS TENANT FITOUT
TENANT FITOUT
50 PORTLAND PIER | THIRD FLOOR
ATLANTIC NATIONAL TRUST, LLC



DEXTROUS
CREATIVE

PORTLAND, ME 04102
TRACIE REED, ARCHITECT
NCARB, AIA, LEED AP BD+C
traciereed@dextrouscreative.com
207.409.0459 (cell)

**JIM HANLEY | BUILDING
REPRESENTATIVE**
ATLANTIC NATIONAL TRUST, LLC
jhanley@atlanticonationaltrust.com
207.553.2000 x 208 (O)
207.328.0298 (C)

**IAN MCCrackEN | GENERAL
CONTRACTOR**
LANDRY FRENCH CONSTRUCTION
imccracken@landryfrenchconstruction.com
207.730.5566 x 110 (O)
207.400.6500 (C)

**KARA KITCHEN | LEASEHOLD
REPRESENTATIVE**
ELITE AIRWAYS
kara@eliteairways.net
207.842.6400 (C)

No.	Description	Date

EXISTING/DEMO PLAN

Project number	15-06
Date	04.13.15
Drawn by	Author
Checked by	Checker

A-1.1

Scale 1/4" = 1'-0"