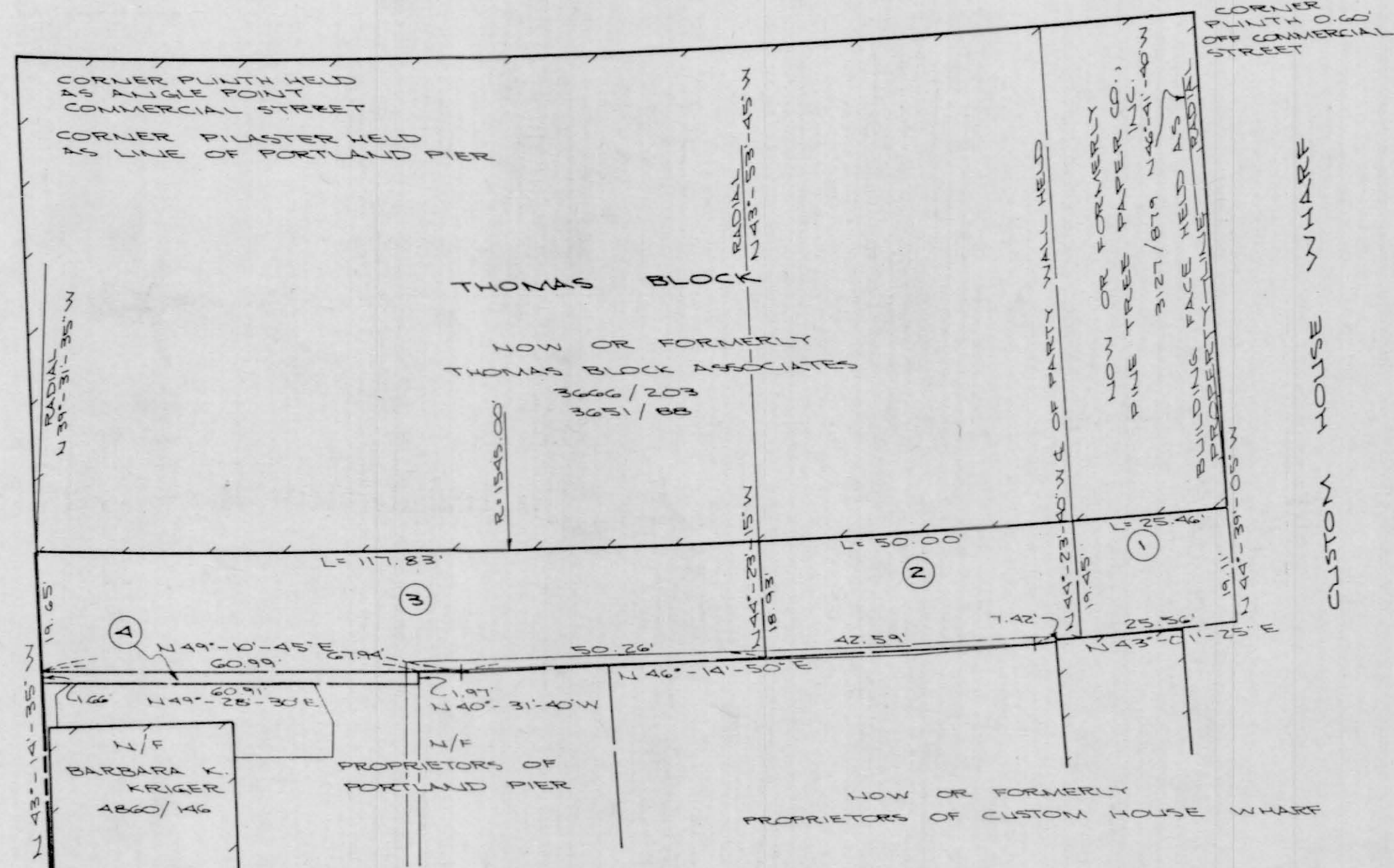
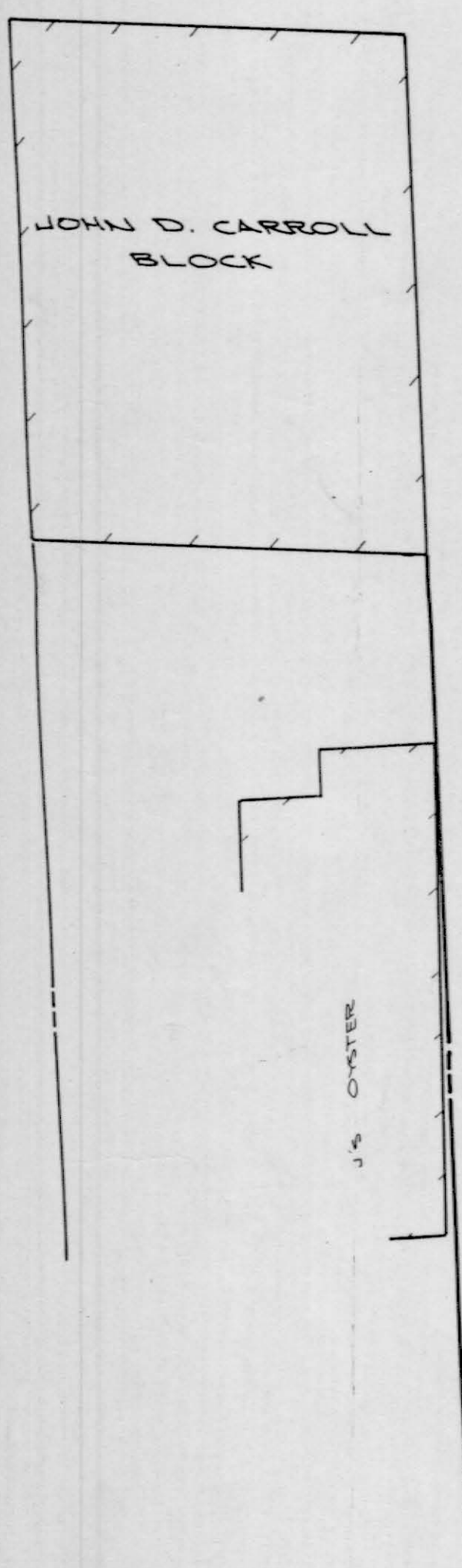


COMMERCIAL STREET
(PUBLIC 100' WIDE)



- NOTES:**
- 1/ BEARINGS BASED ON MAINE STATE GRID WEST ZONE AS COMPLETED FROM GRID COORDINATES OBTAINED FROM M.D.O.T FOR CORNERS OF THOMAS BLOCK ON COMMERCIAL STREET
 - 2/ REAR LINE OF THOMAS BLOCK BUILDING IS GREATER THAN THE 80' FROM COMMERCIAL ST. WHICH DEEDS DESCRIBE.
 - 3/ OWNERS OF RECORD OF EASEMENT AREAS SHOWN:
EASEMENT ONE: PINE TREE PAPER CO., INC.
" TWO: THOMAS BLOCK ASSOCIATES
" THREE: PROPRIETORS OF PORTLAND PIER
" FOUR: BARBARA K. KRIGER
 - 4/ PLAN REFERENCES:
CITY OF PORTLAND ENGINEERING DEPT.
624/1; 214/2; 199/14
 - 5/ LAYOUT OF PORTLAND PIER: COUNTY COMMISSIONERS RECORD BOOK VOL. 16 PAGE 61

PLAN OF LAND
ON
COMMERCIAL STREET
PORTLAND, MAINE
FOR
CITY OF PORTLAND
Owen Haskell, Inc.
Civil Engineers Land Surveyors
South Portland, Maine

Drawn By J.C.S.	Date	Job No.
Trace By W.M.H.	12-20-84	8478 P
Check By J.C.S.	Scale	Drwg. No.
Bk No 299	1" = 20'	2