

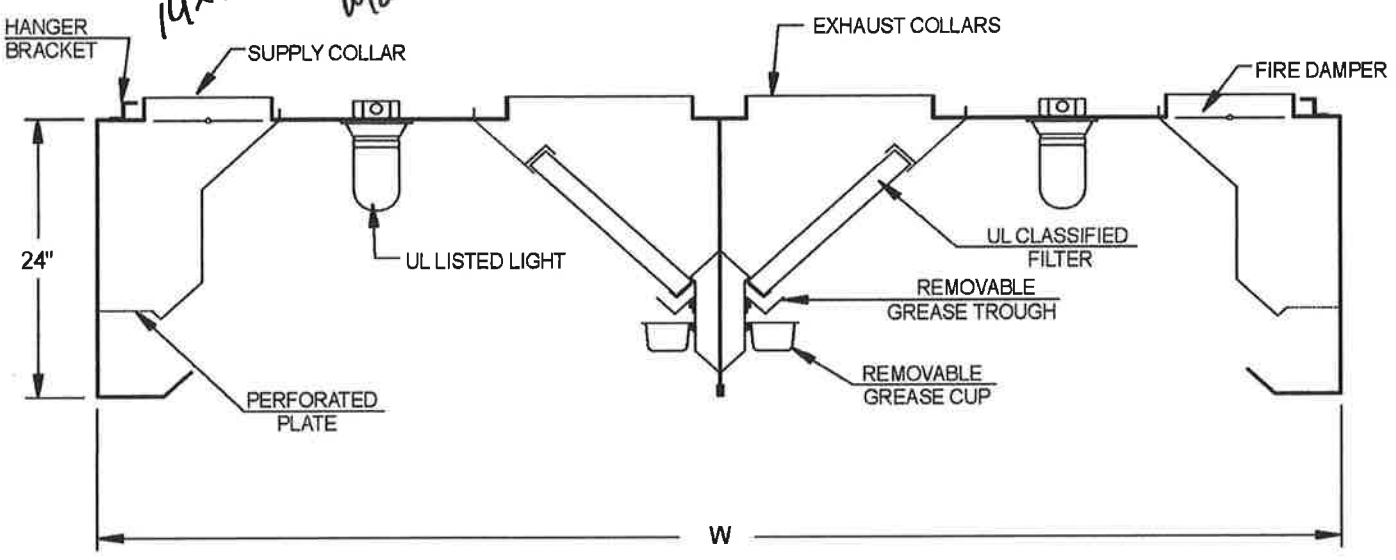


Page 6 Section View

Date....: 01/22/2018
Ref. #: L-367260
Job Name: PORT HOLE

SECTION VIEW
Model: SC
(SHORT CIRCUIT)

14x12 (x2)
Maintenance



Manufactured in Accordance with NFPA-96, IMC, and NSF Listed Standard 2. ETL-ANSI/UL710 Report # 541477.

HOOD SIZE & CONFIGURATION

HOOD 1
L x W x H
15' 3" x 96" x 24" ISLAND - HOOD IS 2 SECTIONS, BACK TO BACK

MATERIAL

430 STAINLESS STEEL Where Exposed

FILTERS

Stainless Steel Baffle Filte

LIGHTS

8 Prewired Incandescent Light(s)

SECTION 1 15' 3" x 48" x 24"

WEIGHT: 850lbs 450 Degree ETL Label (no charbroiler) (Conforms to ANSI/UL-710)
COLLARS (See Plan View for Size & Location)
Full Plenum Insulation
Automatic Fan Controller per IMC 507.1.1 For 2 Hoods Back to
Heat Sensor Mounted In Hood
Stainless Steel Baffle Filters

CFM REQUIREMENT:

EXHAUST: 3947 CFMS @ .500 S.P.
NOTE.....: S.P. Calculations Include Hood, Filters, and up to 8' of Straight Exhaust Duct.
SUPPLY: 3158 CFMS @ .125 S.P.
NOTE.....: S.P. Calculations Include Hood and up to 20' of Straight Supply Duct.

SECTION 2 15' 3" x 48" x 24"

WEIGHT: 850lbs 450 Degree ETL Label (no charbroiler) (Conforms to ANSI/UL-710)
COLLARS (See Plan View for Size & Location)
Full Plenum Insulation
Heat Sensor Mounted In Hood
Stainless Steel Baffle Filters

CFM REQUIREMENT:

EXHAUST: 3947 CFMS @ .500 S.P.
NOTE.....: S.P. Calculations Include Hood, Filters, and up to 8' of Straight Exhaust Duct.