

ARCHITECT:

CONTRACTOR:

- LEGEND:
- Rn PIPE RISER UP
 - Dn PIPE RISER DOWN
 - STEEL PIPE (WET)
 - STEEL PIPE (DRY)
 - ▲ WET SYSTEM RISER
 - ◆ DRY SYSTEM RISER
 - HYDRAULIC CALC. POINT
 - [X-X'] PIPE ELEVATION A.F.F.

DESIGN NOTES:

*ALL PIPING 1 1/2" AND LARGER TO BE SCHEDULE 40 STEEL W/ GROOVED FITTING. *ALL PIPING 1 1/4" AND SMALLER TO BE SCHEDULE 40 STEEL WITH THREADED FITTINGS.

*POSITION, LOCATION, SPACING, AND USE OF SPRINKLERS AND HANGERS SHALL BE IN ACCORDANCE WITH NFPA 13 2010 ed. *HYDRAULIC CALCULATION PROCEDURES HAVE BEEN DONE IN ACCORDANCE WITH NFPA 13 2010 ed. (SEE PLANS FOR LOCATION OF REMOTE AREAS, HYDRAULIC REFERENCE POINTS, AND SYSTEM DEMANDS)

*ALL ELECTRICAL WORK TO BE DONE BY OTHERS.

*DIMENSIONS AND LOCATIONS GIVEN FOR SPRINKLER HEADS AND PIPE MAY VARY TO ACCOMMODATE ACTUAL FIELD CONDITIONS.

*OWNER TO PROVIDE SUFFICIENT HEAT TO PREVENT FREEZING IN WATER FILLED SPRINKLER PIPE AND EQUIPMENT.

*OTHER TRADES TO COORDINATE THEIR WORK WITH SPRINKLER CONTRACTOR.

*ALL NEWLY INSTALLED SPRINKLER HEADS ARE TO BE QUICK RESPONSE U.N.O.

*OWNER IS RESPONSIBLE FOR MAINTAINING THE SPRINKLER SYSTEMS IN ACCORDANCE WITH THE CURRENT EDITION OF NFPA 25.

*INSPECTIONS TESTING AND MAINTENANCE OF WATER BASED FIRE PROTECTION SYSTEMS AND/OR ALL APPLICABLE FEDERAL, STATE, AND LOCAL LAWS, CODES AND ORDINANCES.

GLOBE*
MODEL GL5615
59 / 155"
K=5.6

1/2" BRASS UPRIGHT
(196 SQ. FT. LIGHT HAZARD)

GLOBE*
MODEL GL5615
21 / 200"
K=5.6

1/2" BRASS UPRIGHT
(130 SQ. FT. ORD. HAZARD)

GLOBE*
MODEL GL5626
4 / 155"
K=5.6

1/2" SEMI-RECESSED
WHITE HORIZONTAL SIDEWALL
(196 SQ. FT. LIGHT HAZARD)

RELIABLE CCS 56 - 212" (ABOVE)
GLOBE GL5601 - 155" (BELOW)

1/2" CONCEALED SPACE
UPRIGHT (ABOVE)
1/2" SEMI-RECESSED
WHITE PENDENT (BELOW)
(196 SQ. FT. LIGHT HAZARD)

RELIABLE CCS 56 - 212" (ABOVE)
GLOBE GL5635 - 155" (BELOW)

1/2" CONCEALED SPACE
UPRIGHT (ABOVE)
1" SEMI-RECESSED DRY BARREL
WHITE PENDENT (BELOW)
(196 SQ. FT. LIGHT HAZARD)

* OR APPROVED EQUAL

TOTAL HEADS ON SHEET: 142
SCALE: 1/8"=1'-0"

DATE: DECEMBER 11, 2014
DESIGNER: JEREMY A. FOSS
MAINE RMS #808
NICET LEVEL III CERT. #128801
CHECKED BY: E. POULIN (RMS# 515)
NICET LEVEL IV CERT. #108534

LOCATION:
20 CUSTOM HOUSE
WHARF
PORTLAND, ME

DRAWING TITLE:
**PORTHOLE
RESTAURANT
(SEC. & UPPER FLOOR)**
FIRE PROTECTION PLAN
(NFPA 13 2010 ed.)

DRAWING NO.:
FP-1.2

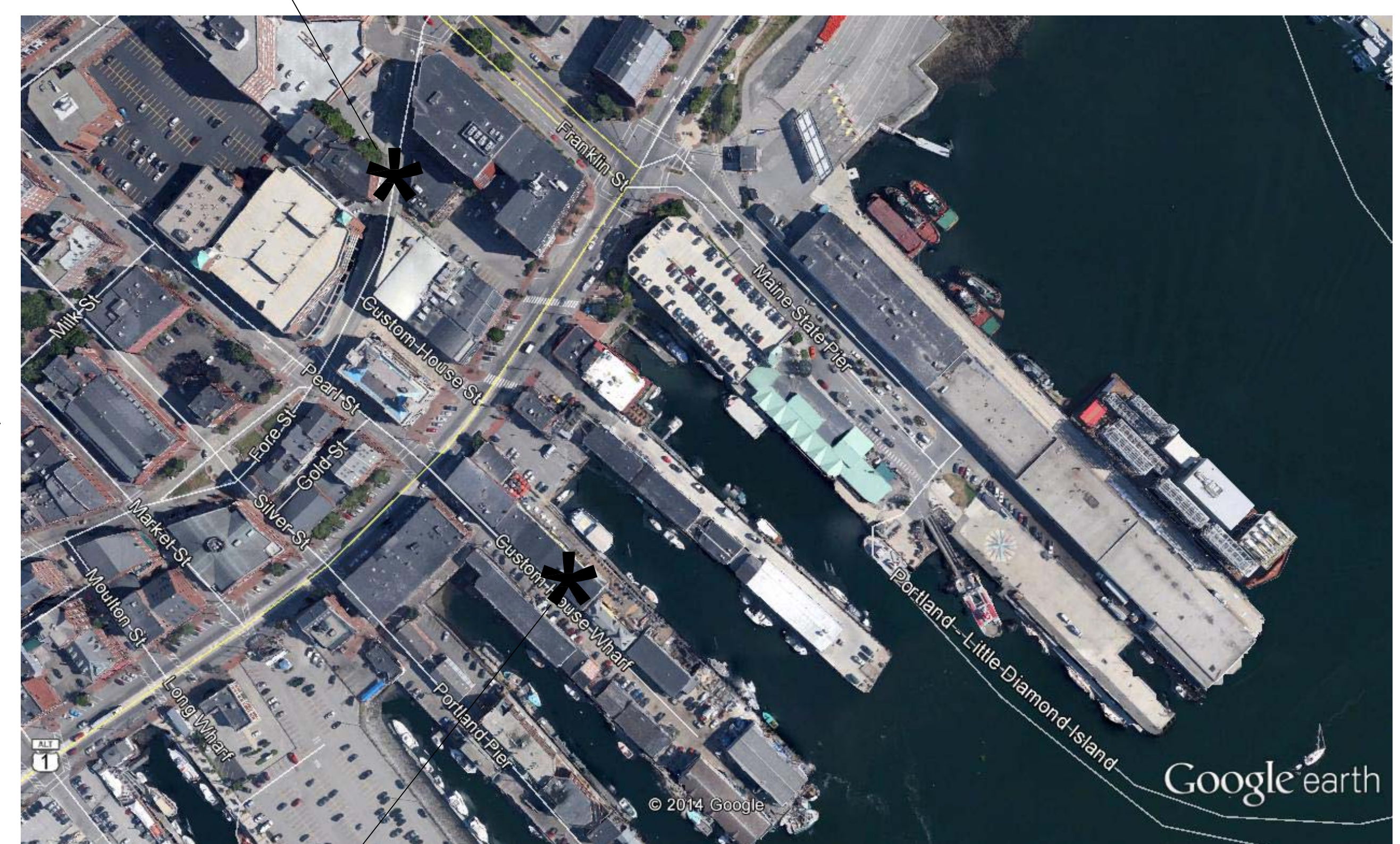
PROJECT DESCRIPTION

BUILDING CONST: THE BUILDING IS OF EXISTING CONSTRUCTION AND BUILT WITH COMBUSTIBLE MATERIALS THROUGHOUT. THE MAIN FLOOR OF THE LARGER BUILDING CONTAINS THE PORTHOLE RESTAURANT. ABOVE THE RESTAURANT ARE OFFICES AND STORAGE SPACES TO BE USED BY THE RESTAURANT OWNERS. THIS PORTION OF THE BUILDING HAS A FLAT ROOF WITH COMBUSTIBLE FRAMING EXPOSED TO THE FLOOR BELOW. THE SMALLER BUILDING HOUSES A SMALL STORAGE AREA ON THE MAIN LEVEL WITH VACANT OFFICE SPACES AND AN APARTMENT. THE UPPER FLOOR OF THE APARTMENT CONTAINS A BEDROOM AND COMBUSTIBLE SLOPED ATTIC SPACE.

BUILDING OCCUP: THE BUILDING IS OF MIXED OCCUPANCIES CONTAINING RESTAURANT SEATING AND A COMMERCIAL KITCHEN AS WELL AS OFFICE, STORAGE SPACES AND A TWO BEDROOM APARTMENT.

SPRINKLER DESIGN: THE SPRINKLER SYSTEM HAS BEEN DESIGNED USING A LIGHT HAZARD CLASSIFICATION THROUGHOUT WITH THE EXCEPTION OF THE KITCHEN AND LIGHT STORAGE AREAS THAT HAVE BEEN DESIGNED USING AN ORDINARY GROUP I HAZARD CLASSIFICATION. THE SECOND FLOOR ABOVE CEILING SPRINKLER COVERAGE HAS BEEN CALCULATED IN ACCORDANCE WITH THE RELIABLE HEAD SPECIFICATIONS. THE SECOND FLOOR STORAGE AREAS AND DRY SYSTEM HAVE BEEN CALCULATED IN ACCORDANCE WITH NFPA 13. THE SYSTEM HAS BEEN DESIGNED AS AN NFPA 13 2010 ed. AUTOMATIC WET PIPE AND DRY PIPE SPRINKLER SYSTEM.

TEST HYDRANT



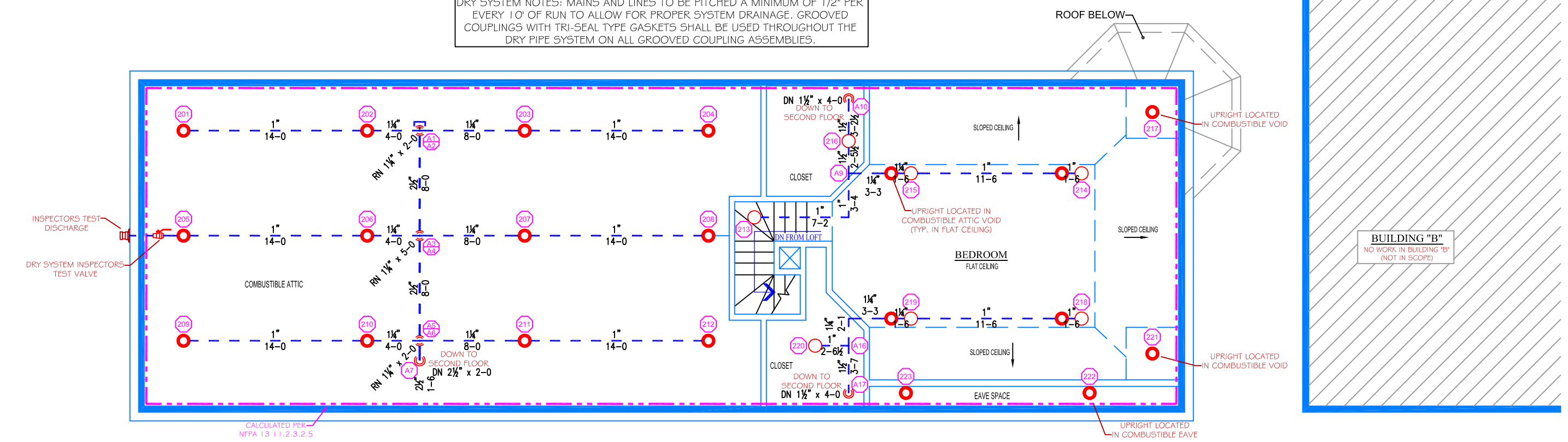
PROJECT SITE:

SITE PLAN
SCALE: N.T.S.

ATTIC (APARTMENT) CALC STICKER
HYD. DESIGN CRITERIA
(NFPA 13 2010 ed. - DRY)

LOCATION= COMBUSTIBLE ATTIC SPACE
HAZARD CLASSIFICATION: LIGHT
DENSITY= 1 GPM/SQ.FT.
AREA OF OPERATION= 2,000 SQ. FT. (ENTIRE AREA)
HOSE DEMAND= 100 GPM
NO. OF SPRINKLERS= 23
SYSTEM DEMAND (INCLUDING HOSE) @
BASE OF RISER= 612 -GPM 98 -PSI
SAFETY MARGIN= 7 -PSI

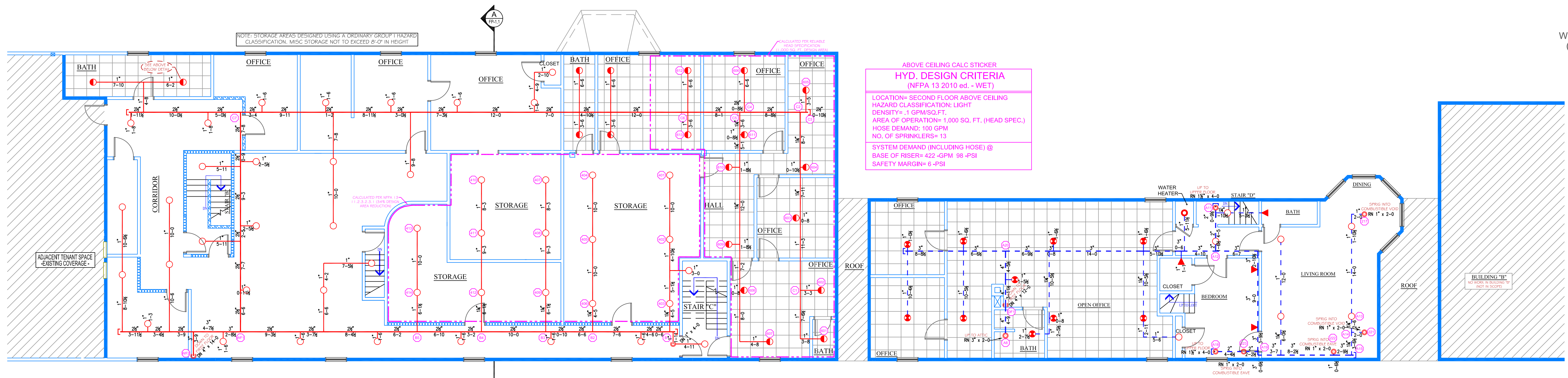
DRY SYSTEM NOTES: MAINS AND LINES TO BE FITTED A MINIMUM OF 1/2" PER EVERY 10' OF RUN TO ALLOW FOR PROPER SYSTEM DRAINAGE. GROOVED COUPLINGS WITH TRI-CAL TYPE GASKETS SHALL BE USED THROUGHOUT THE DRY PIPE SYSTEM ON ALL GROOVED COUPLING ASSEMBLIES.



UPPER FLOOR PLAN
SCALE: 1/8" = 1'-0"
PROTECTED AREA: 1,925 SQ. FT.

ABOVE CEILING CALC STICKER
HYD. DESIGN CRITERIA
(NFPA 13 2010 ed. - WET)

LOCATION= SECOND FLOOR ABOVE CEILING
HAZARD CLASSIFICATION: LIGHT
DENSITY= 1 GPM/SQ.FT.
AREA OF OPERATION= 1,000 SQ. FT. (HEAD SPEC.)
HOSE DEMAND= 100 GPM
NO. OF SPRINKLERS= 13
SYSTEM DEMAND (INCLUDING HOSE) @
BASE OF RISER= 422 -GPM 98 -PSI
SAFETY MARGIN= 6 -PSI



SECOND FLOOR PLAN
SCALE: 1/8" = 1'-0"
PROTECTED AREA: 7,364 SQ. FT.

SECOND FLOOR STORAGE AREA CALC STICKER
HYD. DESIGN CRITERIA
(NFPA 13 2010 ed. - WET)

LOCATION= SECOND FLOOR STORAGE (MAIN BLDG.)
HAZARD CLASSIFICATION: LIGHT
DENSITY= 1 GPM/SQ.FT.
AREA OF OPERATION= 1,000 SQ. FT. (34% REDUC.)
HOSE DEMAND= 100 GPM
NO. OF SPRINKLERS= 14
SYSTEM DEMAND (INCLUDING HOSE) @
BASE OF RISER= 654 -GPM 99 -PSI
SAFETY MARGIN= 44 -PSI

THIS DRAWING HAS BEEN REVIEWED FOR GENERAL COMPLIANCE WITH THE 2010 ed. OF NFPA 13 - STANDARD FOR AUTOMATIC SPRINKLER SYSTEMS. ANY DEVIATIONS FROM THIS DOCUMENT SHALL BE MADE UNDER THE SUPERVISION OF A CERTIFIED DESIGN PROFESSIONAL.

REVIEW COMPLETED BY:
JEREMY A. FOSS
MAINE RMS #808
NICET LEVEL III
CERTIFICATION #128801

SIGNED: _____