

EXISTING CONDITIONS SURVEY AND PROPOSED NEW CONSTRUCTION SEABAGS

25 CUSTON HOUSE WHARF
PORTLAND, MAINE 04101

Area:
First Floor 1,672 SF
Second Floor 2,995 SF
Total 4,667 SF

NFPA Classification:
Industrial Occupancy
per NFPA section 6.1.12.1



THIS DRAWING IS THE PROPERTY OF
SCOTT SIMONS ARCHITECTS
AND IS NOT TO BE COPIED OR
REPRODUCED IN PART OR WHOLE.

PROJECT

SEABAGS
EXISTING CONDITIONS
APRIL 27, 2012

SEABAGS
25 CUSTOM HOUSE WHARF
PORTLAND, MAINE 04101
(207) 780-0744

TITLE

COVER SHEET
EXISTING CONDITIONS
PROPOSED NEW CONSTRUCTION
ISSUED FOR BUILDING PERMIT

STATUS: **DRAWING STATUS**
EXISTING CONDITIONS

DATE:

04.27.12

REVISION / DATE:

06.12.12 NEW / PROPOSED

SCALE:

AS NOTED

07.16.12 ISSUED FOR PERMITTING

PROJECT NO.

2012-0080

07.19.12 NOTES ADDED

DRAWN BY:

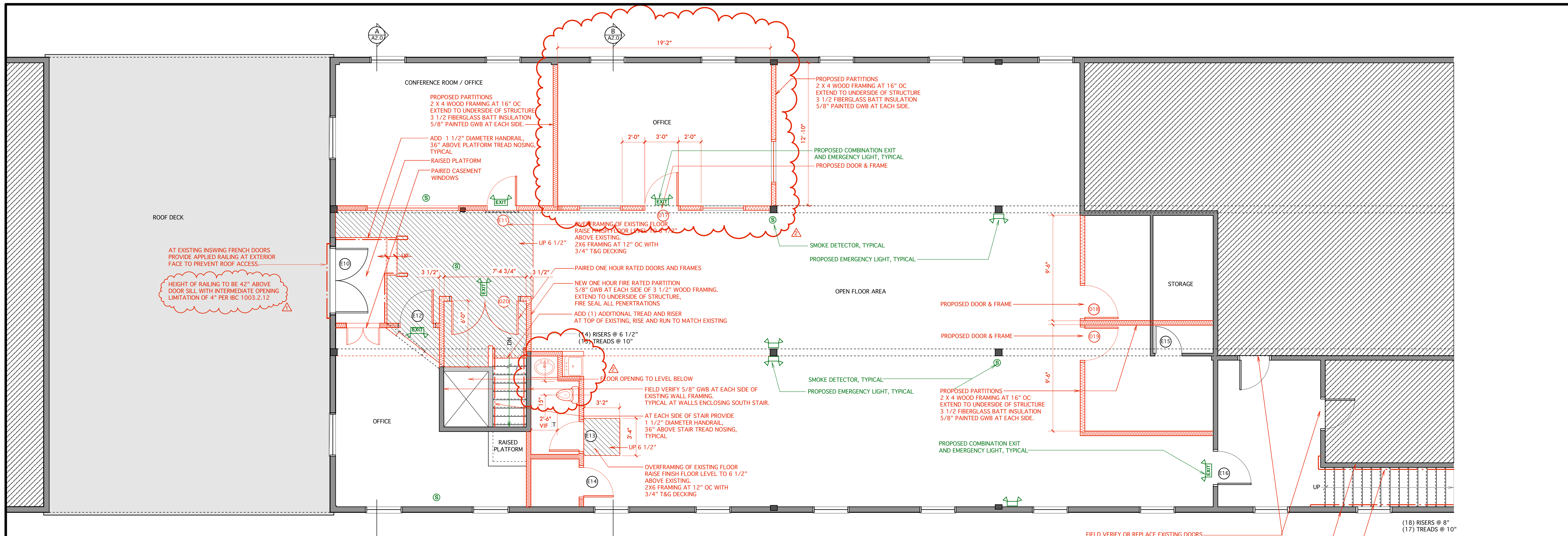
2012

08.17.12 OFFICE DIMENSION CHANGED
WINDOWS MOVED TO OFFICE
SINK / TOILET POSITION CHANGED

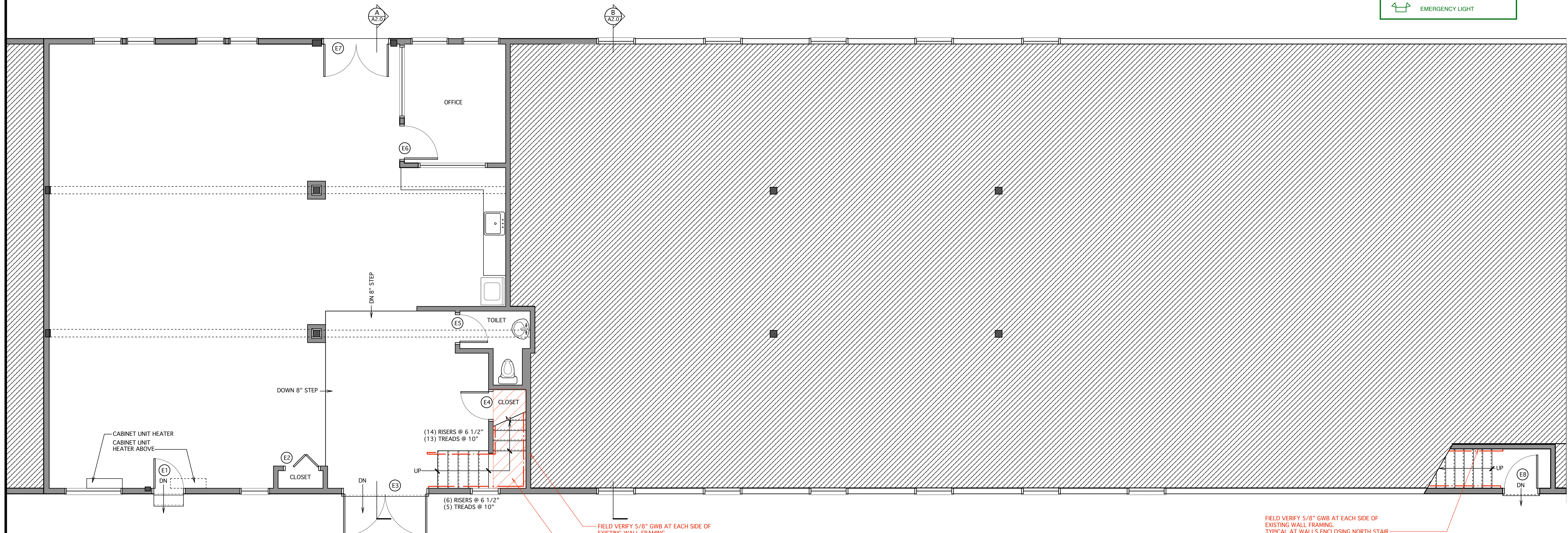
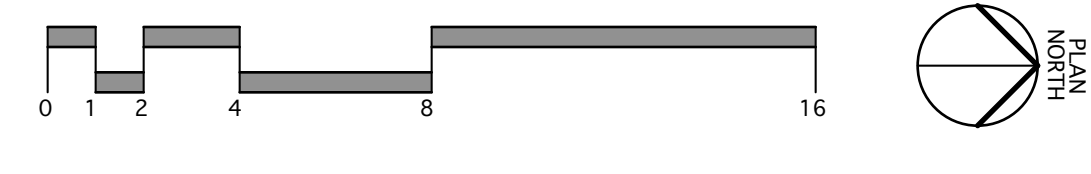
2012 © Scott Simons Architects

DWG NO.

A-0.0



2 EXISTING SECOND FLOOR PLAN
SCALE 1/4" = 1'-0"



1 EXISTING FIRST FLOOR PLAN
SCALE 1/4" = 1'-0"



ELECTRICAL LEGEND

	EMERGENCY LIGHT / EXIT LIGHT
	COMBINATION UNIT
	SMOKE DETECTOR
	EMERGENCY LIGHT

Area:
First Floor 1,672 SF
Second Floor 2,995 SF
Total 4,667 SF

NFPA Classification:
Industrial Occupancy
per NFPA section 6.1.12.1

Scott Simons Architects
 75 York Street
 Portland, Maine 04101
 Tel: 207 772 4556
 Fax: 207 628 4656
 web: www.simonsarchitects.com

THIS DRAWING IS THE PROPERTY OF SCOTT SIMONS ARCHITECTS AND IS NOT TO BE COPIED OR REPRODUCED IN PART OR WHOLE.

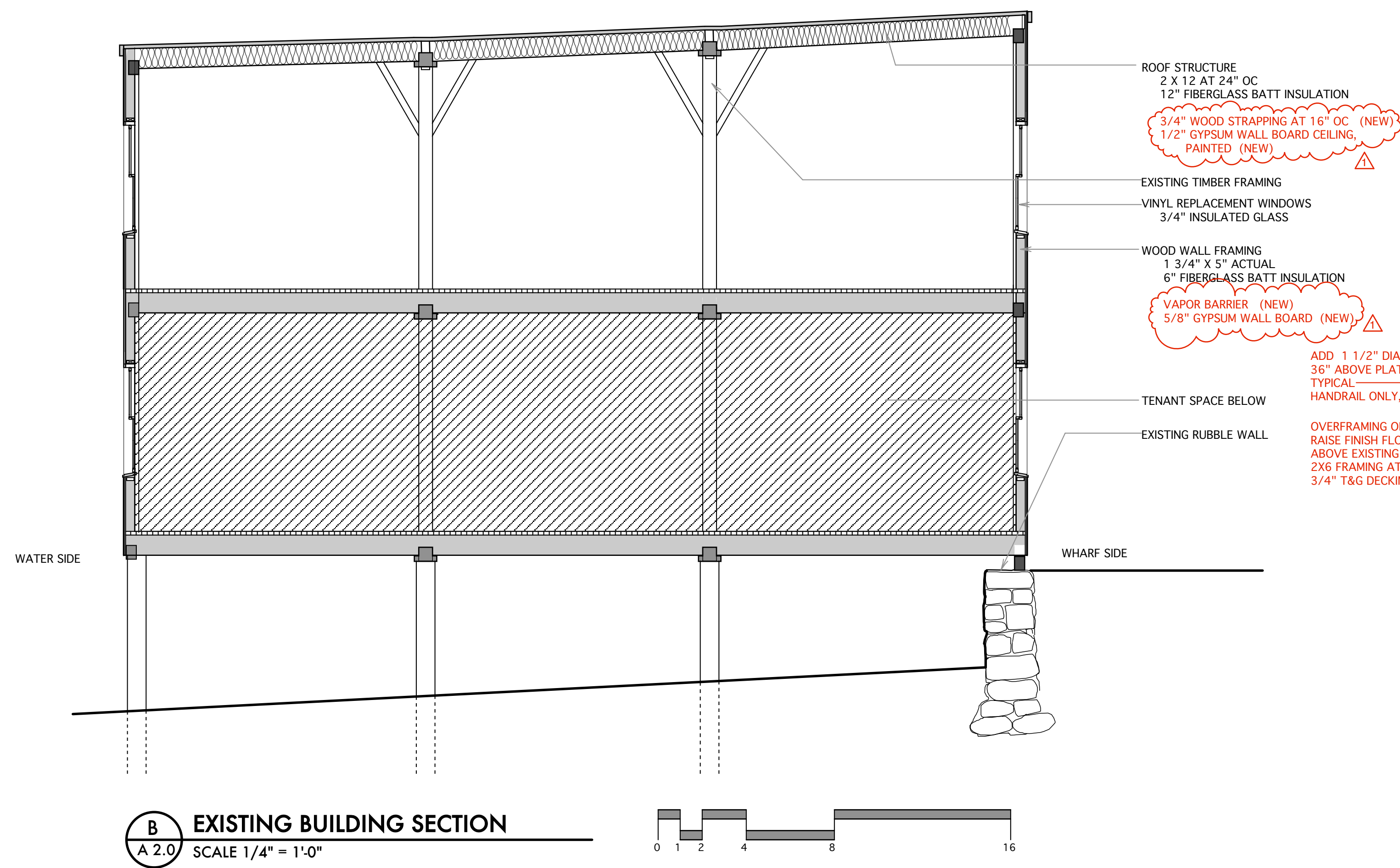
PROJECT
SEABAGS
EXISTING CONDITIONS
APRIL 27, 2012

SEABAGS
25 CUSTOM HOUSE WHARF
PORTLAND, MAINE 04101
(207) 780-0744

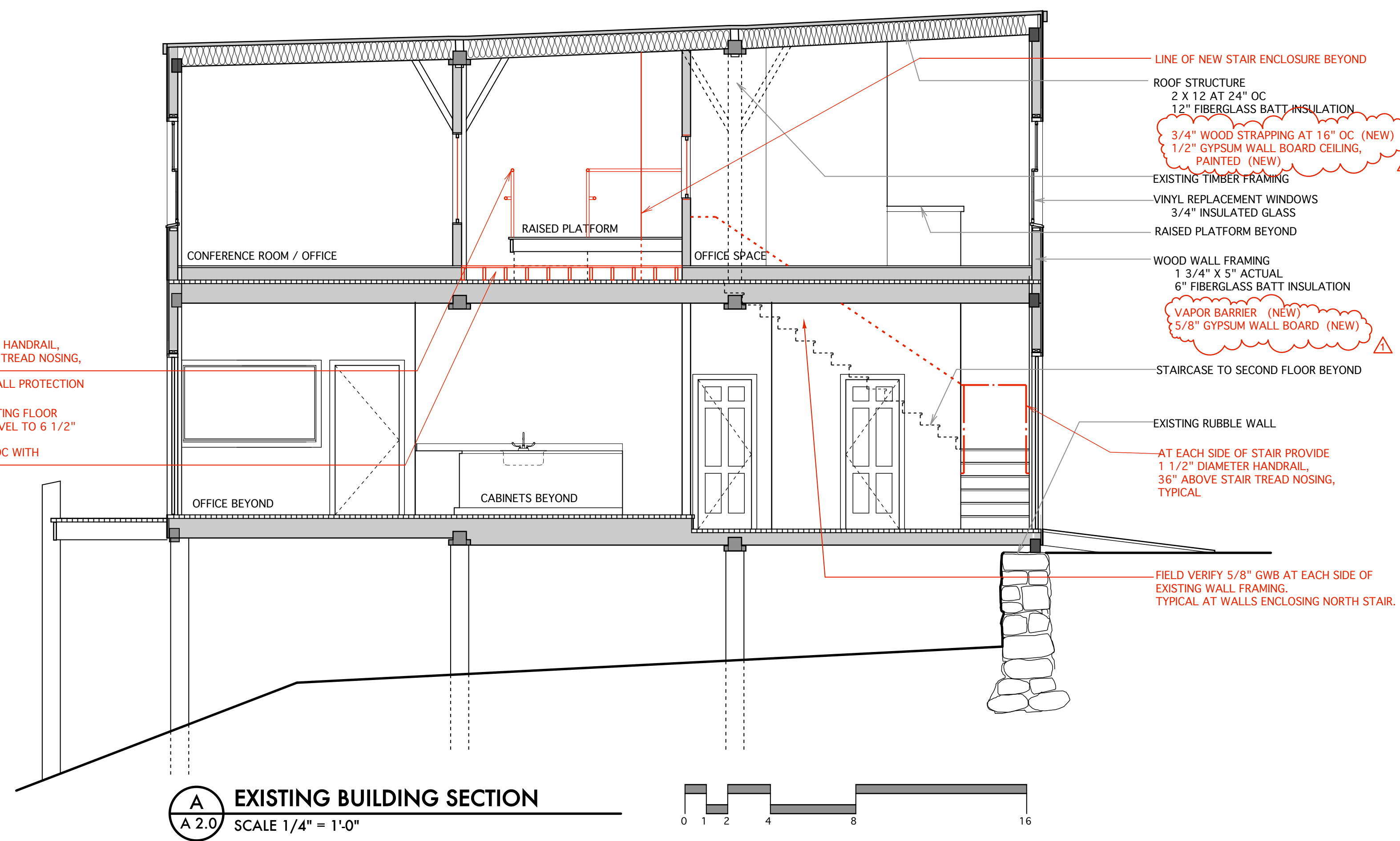
TITLE
FIRST & SECOND LEVEL
EXISTING CONDITIONS
PROPOSED NEW CONSTRUCTION
ISSUED FOR BUILDING PERMIT

STATUS: **DRAWING STATUS**
EXISTING CONDITIONS

DATE: 04.27.12	REVISION / DATE: 06.12.12 NEW / PROPOSED CONSTRUCTION ADDED
SCALE: AS NOTED	07.16.12 ISSUED FOR PERMITTING
PROJECT NO.: 2012-0080	07.19.12 NOTES ADDED
DRAWN BY:	08.17.12 OFFICE DIMENSION CHANGED WINDOWS SIZED TO OFFICE SINK / TOILET POSITION CHANGED
2012 © Scott Simons Architects	



B EXISTING BUILDING SECTION
SCALE 1/4" = 1'-0"



A EXISTING BUILDING SECTION
SCALE 1/4" = 1'-0"

DOOR SCHEDULE

Door No.	Location	Style	Door Width	Door Height	Material	Frame Material	Head	Jamb	Hardware Elev.	Key Set	Remarks
E1	ENTRY DOOR	EXISTING-EXTERIOR	2'-8"	EXIST.		EXIST.					
E2	CLOSET	EXISTING-WOOD BIFOLD	3'-0"	EXIST.		EXIST.					
E3	LANDING	EXISTING-PAIRED EXTERIOR WOOD	7'-6"	EXIST.		EXIST.					
E4	CLOSET	EXISTING-PRESSED METAL	2'-6"	EXIST.		EXIST.					
E5	TOILET	EXISTING-PRESSED METAL	2'-6"	EXIST.		EXIST.					
E6	OFFICE	EXISTING	3'-0"	EXIST.		EXIST.					
E7	WORK SPACE	EXISTING-PAIRED EXTERIOR	5'-10"	EXIST.		EXIST.					
E10	ROOF DECK	EXISTING-PAIRED INSWING	5'-10"	EXIST.							
E11	OFFICE	EXISTING	2'-8"	EXIST.							
E12	OFFICE	EXIST.	EXIST.	EXIST.		EXIST.					
E13	TOILET	EXIST.				EXIST.					
E14	CLOSET	EXIST.	EXIST.	EXIST.	EXIST.	EXIST.					
E15	STORAGE	EXIST.	EXIST.	EXIST.	EXIST.	EXIST.					
E16	LOBBY	EXISTING-PRESSED METAL									
O17	OFFICE	PROPOSED INSWING	3'-0"	7'-0"	SC WOOD	HM					PROPOSED INSWING SOLID CORE WOOD VENER DOOR IN HOLLOW METAL FRAME
O18	OFFICE	PROPOSED INSWING	3'-0"	7'-0"	SC WOOD	HM					PROPOSED INSWING SOLID CORE WOOD VENER DOOR IN HOLLOW METAL FRAME
O19	OFFICE	PROPOSED INSWING	3'-0"	7'-0"	SC WOOD	HM					PROPOSED INSWING SOLID CORE WOOD VENER DOOR IN HOLLOW METAL FRAME
O18	SOUTH STAIR	PROPOSED PAIRED	6'-0"	7'-0"	SC WOOD	HM					PROPOSED ONE HOUR RATED SOLID CORE WOOD VENER DOOR IN HOLLOW METAL FRAME



THIS DRAWING IS THE PROPERTY OF SCOTT SIMONS ARCHITECTS AND IS NOT TO BE COPIED OR REPRODUCED IN PART OR WHOLE.

PROJECT
SEABAGS
EXISTING CONDITIONS
APRIL 27, 2012

SEABAGS
25 CUSTOM HOUSE WHARF
PORTLAND, MAINE 04101
(207) 780-0744

TITLE
BUILDING SECTIONS
EXISTING CONDITIONS
PROPOSED NEW CONSTRUCTION
ISSUED FOR BUILDING PERMIT

STATUS: **DRAWING STATUS**
EXISTING CONDITIONS

DATE: 04.27.12
SCALE: AS NOTED
PROJECT NO: 2012-0080
DRAWN BY: 2012 © Scott Simons Architects

REVISION / DATE:
06.12.12 NEW / PROPOSED CONSTRUCTION ADDED
07.16.12 ISSUED FOR PERMITTING
07.19.12 NOTES ADDED
08.17.12 OFFICE DIMENSION CHANGED / WINDOWS ADDED TO OFFICE / TOILET POSITION CHANGED

DWG NO. **A-2.0**