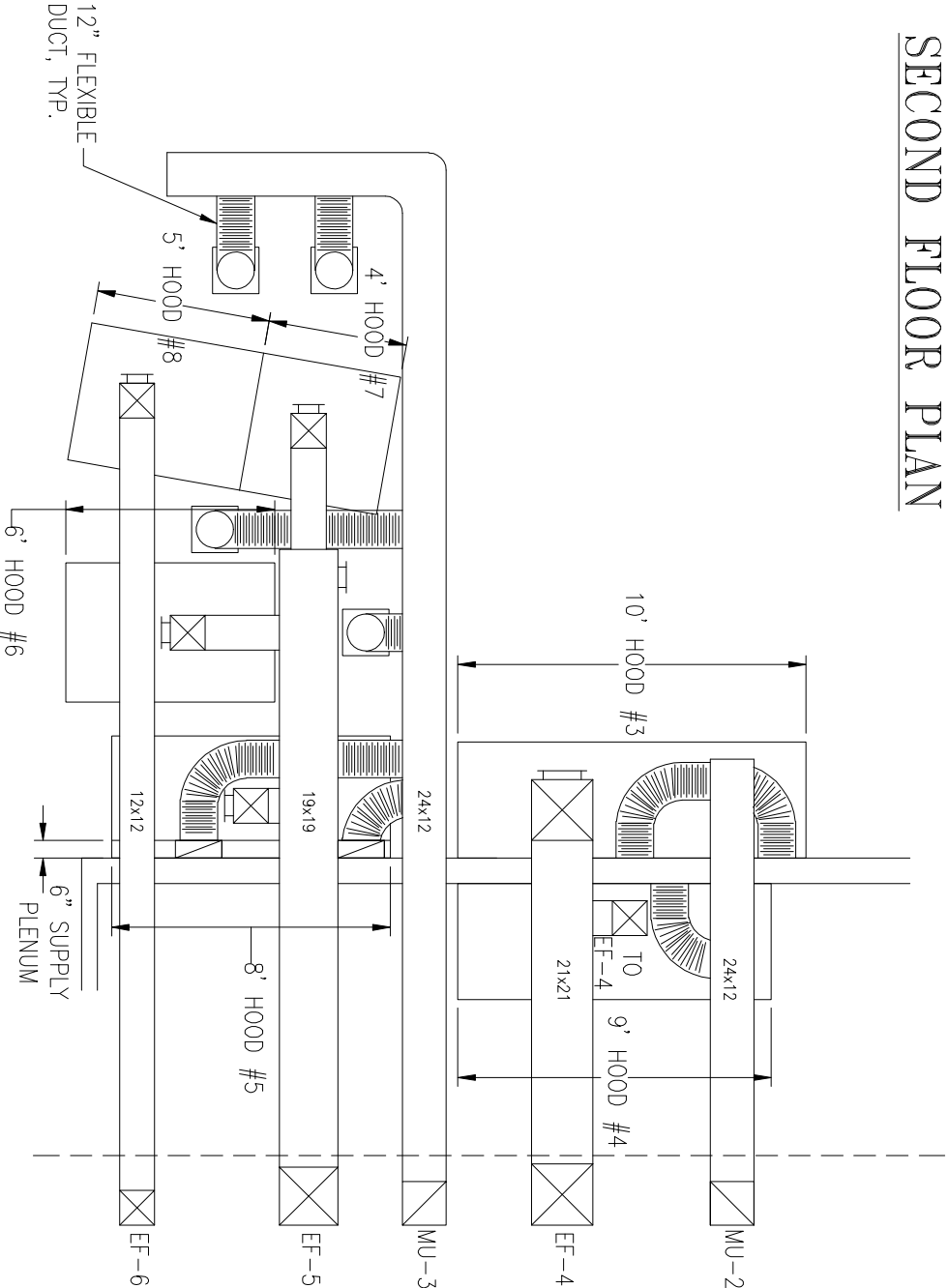


SECOND FLOOR PLAN



FIRST FLOOR PLAN

EQUIPMENT SCHEDULE

- Hood 1 - 18 GA Stainless Steel Rear Discharge Exhaust Hood, 13' X 48" X 23" high with all welded grease shell, full length filter rack, Removable grease cup, UL Listed Baffle filters and light fixtures.
- Hood 2 - 18 GA Stainless Steel Rear Discharge Exhaust Hood, for wood burning grill, 4' X 48" X 23" high with all welded grease shell, full length filter rack, Removable grease cup, UL Listed Baffle filters and light fixtures.
- Hood 3 - CaptiveAire Exhaust Hood, 10' X 48" X 24" high with all welded grease shell, full length filter rack, Removable grease cup, UL Listed Baffle filters and light fixtures.
- Hood 4 - CaptiveAire Exhaust Hood, 9' X 48" X 24" high with all welded grease shell, full length filter rack, Removable grease cup, UL Listed Baffle filters and light fixtures.
- Hood 5 - 18 GA Stainless Steel Rear Discharge Exhaust Hood, 8' X 48" X 23" high with all welded grease shell, full length filter rack, Removable grease cup, UL Listed Baffle filters and light fixtures.
- Hood 6 - 18 GA Stainless Steel Island Exhaust Hood, 6' X 54" X 23" high with all welded grease shell, full length filter rack, Removable grease cup, UL Listed Baffle filters and light fixtures.
- Hood 7 - 18 GA Stainless Steel Island Exhaust Hood, 4' X 54" X 23" high with all welded grease shell, full length filter rack, Removable grease cup, UL Listed Baffle filters and light fixtures.
- Hood 8 - 18 GA Stainless Steel Island Exhaust Hood, for wood burning grill, 5' X 54" X 23" high with all welded grease shell, full length filter rack, Removable grease cup, UL Listed Baffle filters and light fixtures.
- EF-1 - 18", 1 HP, 1 spd, 3 phase, upblast Fan, hinged roof curb, grease trap, and welded 19" x 19" duct. 3900 CFM @ 1650 FPM.
- EF-2 - 13", ½ HP, 1 spd, 3 phase, upblast Fan, hinged roof curb, grease trap, and welded 11" x 11" duct. 1400 CFM @ 1800 FPM
- EF-3 - Exhaust for wood fired pizza oven, 12" All fuel Duct with Exhausto RSV-200 fan run from wood fired oven straight up through roof. 1200 CFM
- EF-4 - 24", 1 HP, 1 spd, 3 phase. Upblast Fan, hinged roof curb, grease trap, and welded 21" x 21" duct. 5700 CFM @ 2025 FPM
- EF-5 - 20", 1 HP, 1 spd, 3 phase, upblast Fan, hinged roof curb, grease trap, and welded 19" x 19" duct. 5400 CFM @ 2050 FPM
- EF-6 - 13", 1 HP, 1 spd, 3 phase, upblast Fan, hinged roof curb, grease trap, and welded 12" x 12" duct. 1750 CFM @ 1900 FPM
- MU-1 - 15", 2 HP, 1 spd, 3 phase Blower Fan, with a filtered housing, roof curb, and ductwork. 5200 CFM = 80% returned to room, Includes wood burning oven.
- MU-2 - 15" 1 HP, 1 spd, 3 phase, Blower Fan, with a filtered housing, roof curb, and ductwork. 4560 CFM = 80% returned to room.
- MU-3 - 15" 1 HP, 1 spd, 3 phase, Blower Fan, with a filtered housing, roof curb, and ductwork. 5720 CFM = 80% returned to room. Covers two exhaust systems. 4 diffuser outlets will be required in addition to rear discharge on hood 5.
- Notes:**
- UL-300 Fire Suppression Systems must be installed in all hoods (By Others) to cover the hood, ductwork and appliances under the hoods.
 - Upon activation of the fire suppression system, the exhaust fan shall remain on, the Supply system, Gas feed, and any electrical outlets under the protected area shall shut down.
 - Exhaust ducts are to be wrapped in a zero clearance duct wrap to 18" below ceilings and within 18" of combustibles.
 - System is built to meet NFPA 96 and all local building codes.

JOB LOCATION

THE FISH SHACK
6 Custom House Wharf
Portland ME. 04101

SCALE
3/16" = 1'-0"

DRN BY
LISA HOANG

DATE
MAR 19, 2013

SEIDMAN BROS. INC.

25 SIXTH STREET
CHELSEA, MA 02150