



STARBUCKS #19384
145 COMMERCIAL ST.
PORTLAND ME
13-19400

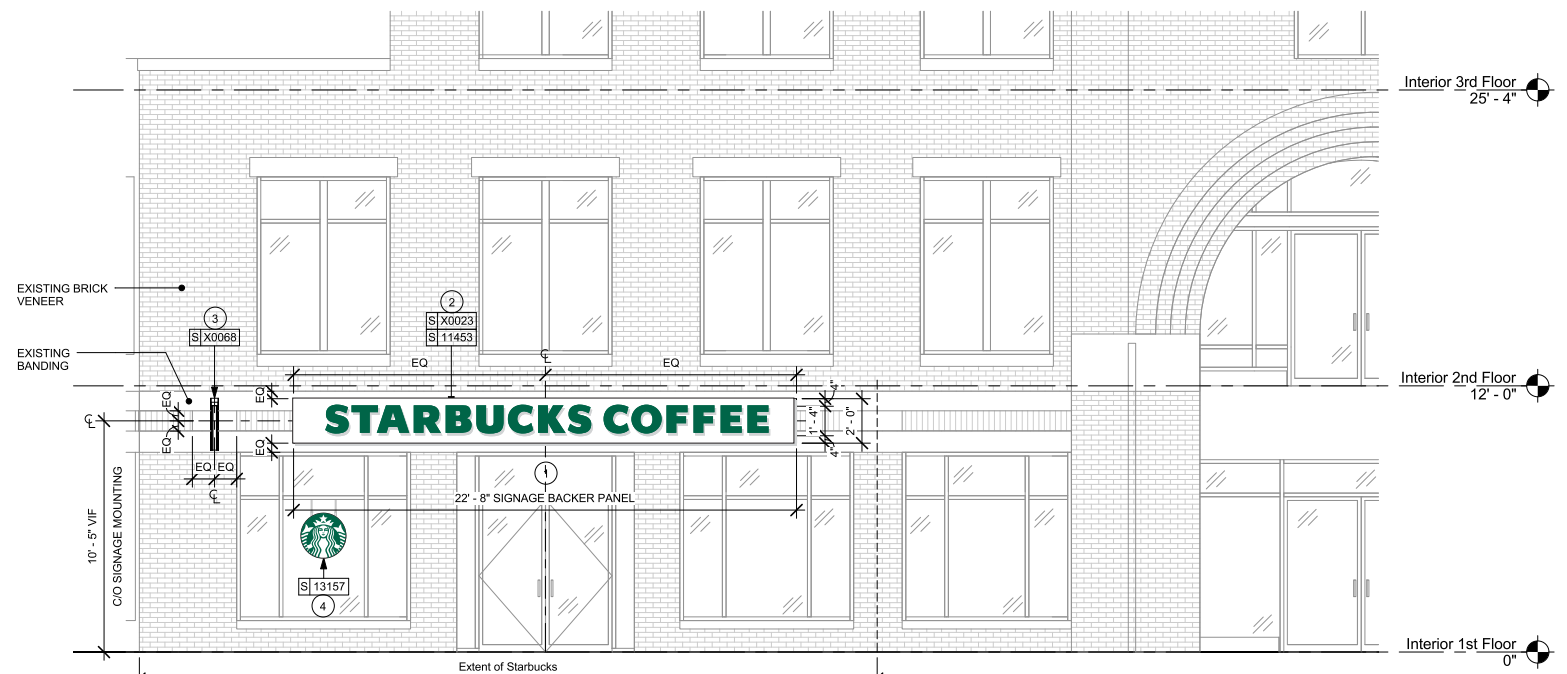
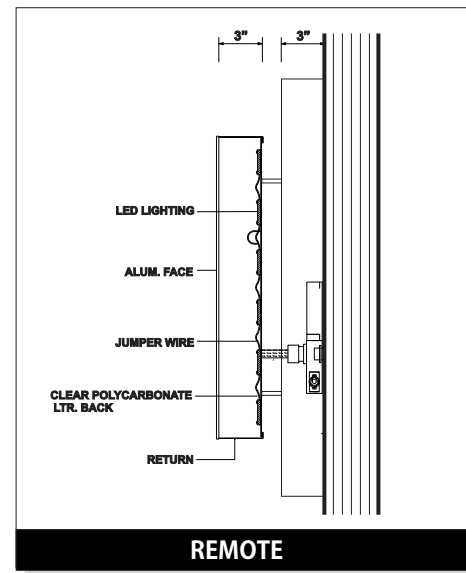
16" HALO LIT CHANNEL LETTERS ON CABINET
QTY. 1

13-19400

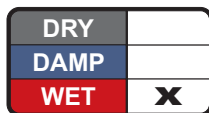


SPECIFICATIONS

- A** Internally illuminated halo lit channel letters to be fabricated from aluminum with pre-painted White interiors and painted satin finish green PMS: 3425 polyurethane exteriors w/ clear polycarbonate backs.
- B** Letters illuminated w/ "Lumificient LED's w/ 120V power supply.
- C** Letters to be installed w/ 2" stand offs.
- D** Background cabinet 2" Aluminum Pan. Color T.B.D



1 Commercial Street Elevation
Scale: 1/4" = 1'-0"



THE INTENT OF THIS DRAWING IS TO SHOW A CONCEPTUAL REPRESENTATION OF THE PROPOSED SIGNAGE. DUE TO VARIATIONS IN PRINTING DEVICES AND SUBSTRATES, THE FINISHED PRODUCT MAY DIFFER SLIGHTLY FROM DRAWING.

JOB INFO	JOB NAME: STARBUCKS #19384	DATE: 2-1-13	DESIGN SPECIFICATIONS ACCEPTED BY:	
	LOCATION: 145 COMMERCIAL ST. PORTLAND ME	REV. DATE:	EST:	CLIENT:
	CUSTOMER CONTACT: SUSAN ARNOLD	REV. DATE:	SLS/PM:	LANDLORD:
	SALESMAN: VALERIE FOSTER	SCALE: 1/2" = 1'		
DESIGNER: CHAD WIKE	FILE:2013/STARBUCKS/PORTLAND ME/13-19400/SB PORTLAND ME			

HILTONDISPLAYS
GREAT SIGNS FOR GREAT COMPANIES

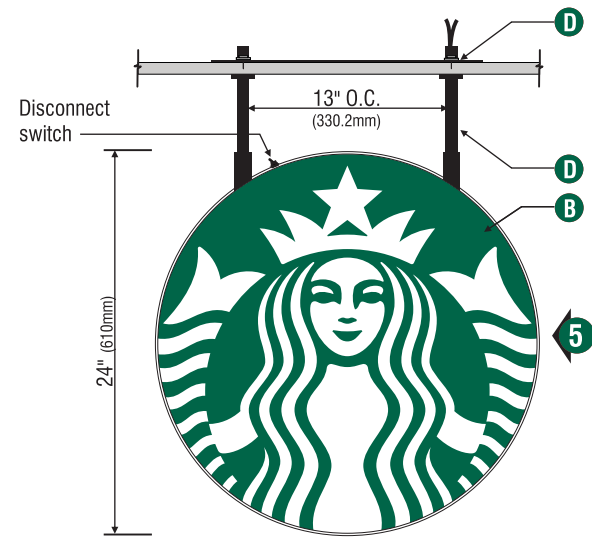
www.hiltondisplays.com

125 Hillside Dr.
Greenville, SC
29607

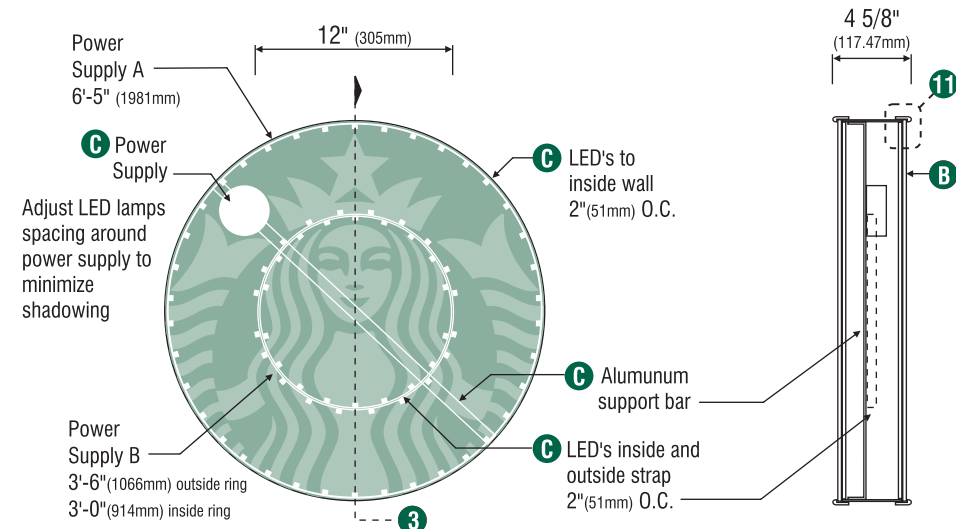
(864) 233-0401
(800) 353-9132
Fax: (864) 242-2204

24" Window Sign

Qty 2

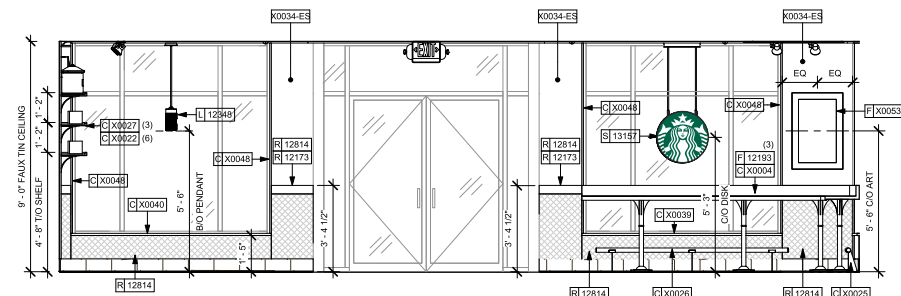


1 Front View
Scale: 1" = 1'-0"



2 LED Detail
Scale: 1" = 1'-0"

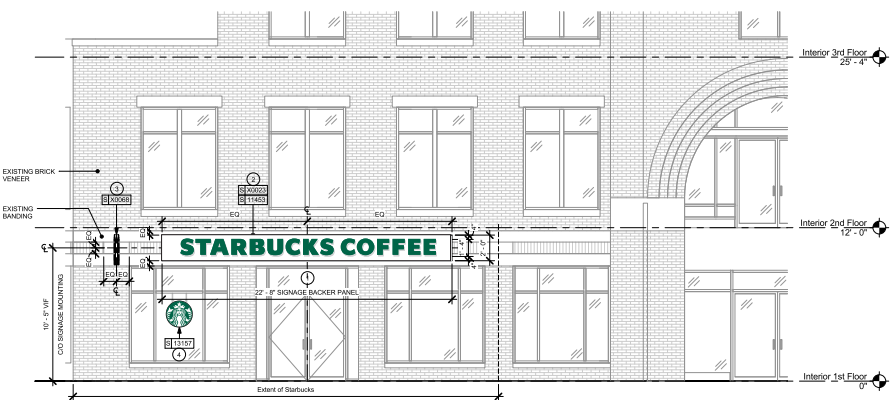
3 Section View
Scale: 1" = 1'-0"



1 STOREFRONT ENTRANCE
Scale: 3/8" = 1'-0"



2 Market Street Elevation
Scale: 1/8" = 1'-0"



1 Commercial Street Elevation
Scale: 1/8" = 1'-0"

SPECIFICATIONS: Quantity ()

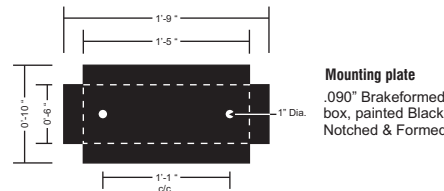
- A** Double faced internally illuminated suspended window logo disk. Logo disk cabinet to be 4" (102mm) deep, fabricated from .125" aluminum, painted Black polyurethane.
- B** Faces to be 3/16" (5mm) Acrylite 015-2GP 1" (25mm) Black Trimcap with square head screws retainer edging. Graphics of logo to be 1st surface 3M Translucent Scotchcal vinyl- Holly Green #3630-76. Siren to show thru White.
- C** Internally illuminate logo disk with Lumificient™ White LED's inside return perimeter, and inset ring of LED's are attached to aluminum strapping formed into an oval outside and inside of strap. Power with self contained Lumificient™ circular power supply cover is White. Primary wire to run thru 1/2" (13mm) rigid conduit to ceiling. **Ship two (2) 8'-0" lengths of conduit painted Black.**
- D** Mounting plate (provided by Sign Supplier) to .090 Aluminum, painted Black. Suspend logo with 1/2" (13mm) rigid conduit painted Black. Length of conduit to vary per location.

Center logo left to right within window. Trim around conduit at ceiling with Black acrylic beauty rings (provided by Sign Supplier).

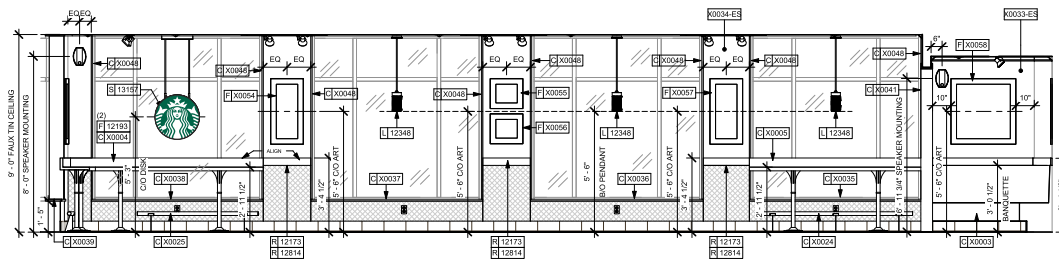
Size	Sq.Ft.	Sq.M.	Volts
24" (610mm)	3.14	0.29	120



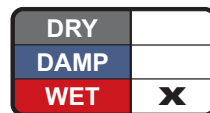
*Ship Two (2) EMT screw connector(s) to attach to conduit, if needed



LED's Provided By: **LUMIFICIENT**



3 STOREFRONT
Scale: 3/8" = 1'-0"



THE INTENT OF THIS DRAWING IS TO SHOW A CONCEPTUAL REPRESENTATION OF THE PROPOSED SIGNAGE. DUE TO VARIATIONS IN PRINTING DEVICES AND SUBSTRATES, THE FINISHED PRODUCT MAY DIFFER SLIGHTLY FROM DRAWING.

JOB INFO

JOB NAME: STARBUCKS #19384	DATE: 2-1-13
LOCATION: 145 COMMERCIAL ST. PORTLAND ME	REV. DATE:
CUSTOMER CONTACT: SUSAN ARNOLD	REV. DATE:
SALESMAN: VALERIE FOSTER	SCALE: 1/2" = 1'
DESIGNER: CHAD WIKE	FILE:2013/STARBUCKS/PORTLAND ME/13-19400/SB PORTLAND ME

DESIGN SPECIFICATIONS ACCEPTED BY:

EST:	CLIENT:
SLS/PM:	LANDLORD:

HILTON DISPLAYS
GREAT SIGNS FOR GREAT COMPANIES

www.hiltondisplays.com

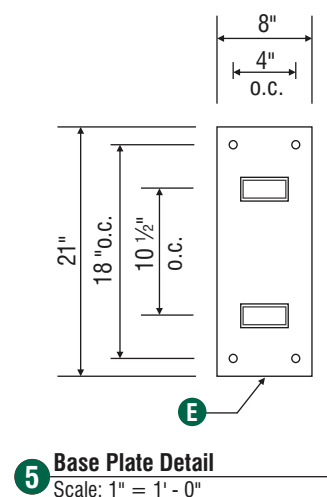
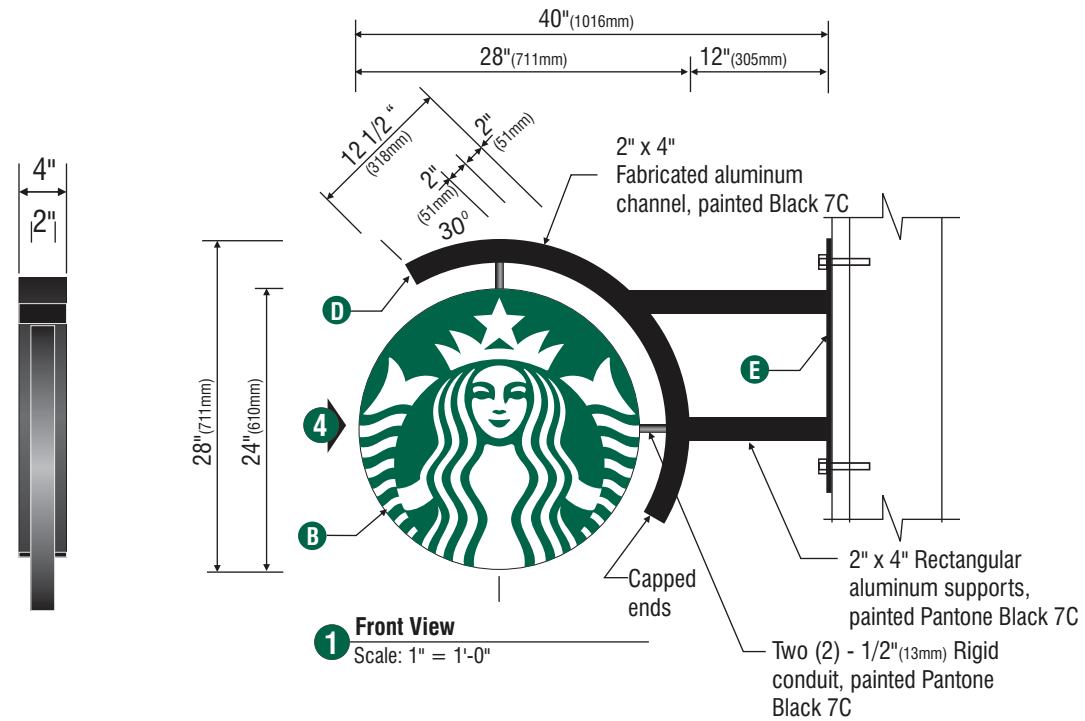
125 Hillside Dr.
Greenville, SC
29607

(864) 233-0401
(800) 353-9132
Fax: (864) 242-2204

24" Blade Sign Non-illuminated

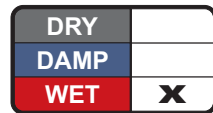
Qty 1

13-19400



SPECIFICATIONS:

- A** 12" Double faced non illuminated blade sign logo. Logo disk cabinet to be 1" deep, fabricated from 1/8" aluminum, painted satin finish black.
- B** Graphics of logo to be 1st surface 3M Translucent Scotchcal vinyl- Holly Green #3630-76. Siren to show thru White.
- C** Radiused logo surround to be 1/8" (3mm) aluminum, fabricated as a 1" x 2" channel, painted Pantone black 7C. Support arms to be 1 x 2" rectangular aluminum tube, painted Pantone black 7C. Cabinet supports to be 1/2" (13mm) rigid conduit and aluminum pipe, painted Pantone black 7C.
- E** Wall plate to be 12" x 5" x 1/4" aluminum, painted Pantone black 7C. Fasten securely to wall with 3/8" bolts.



THE INTENT OF THIS DRAWING IS TO SHOW A CONCEPTUAL REPRESENTATION OF THE PROPOSED SIGNAGE. DUE TO VARIATIONS IN PRINTING DEVICES AND SUBSTRATES, THE FINISHED PRODUCT MAY DIFFER SLIGHTLY FROM DRAWING.

JOB INFO	JOB NAME: STARBUCKS #19384	DATE: 2-1-13	DESIGN SPECIFICATIONS ACCEPTED BY:	
	LOCATION: 145 COMMERCIAL ST. PORTLAND ME	REV. DATE:	EST:	CLIENT:
	CUSTOMER CONTACT: SUSAN ARNOLD	REV. DATE:	SLS/PM:	LANDLORD:
	SALESMAN: VALERIE FOSTER	SCALE: 1/2" = 1'		
DESIGNER: CHAD WIKE	FILE:2013/STARBUCKS/PORTLAND ME/13-19400/SB PORTLAND ME			

HILTON DISPLAYS
GREAT SIGNS FOR GREAT COMPANIES

www.hiltondisplays.com

125 Hillside Dr.
Greenville, SC 29607

(864) 233-0401
(800) 353-9132
Fax: (864) 242-2204