

Project Title
PEOPLE'S UNITED BANK

Sign Type
C1-C2 WHITE-R

Drawing Type
ELEVATION

Date 04.21.11

Lead Drafter MZC
Drawn By MZC/BMH/RMA
Project Mgr.

General Sign Specifications

- Interior Exterior
 - Single Faced Double Faced
 - Non-Illuminated
 - Illuminated
 - 120 Volts _____ Amps(+/-)
 - 277 Volts _____ Amps(+/-)
 - _____ Amps(+/-)
 - U/L Listed Non U/L Listed
- Location _____
 Windload _____
 Area _____ Weight _____

Drawing Revisions

Drawn By	Date	Change
1 GLM	08.26.15	LED/BRKTS
2		
3		
4		
5		
6		
7		
8		
9		
10		
11		
12		

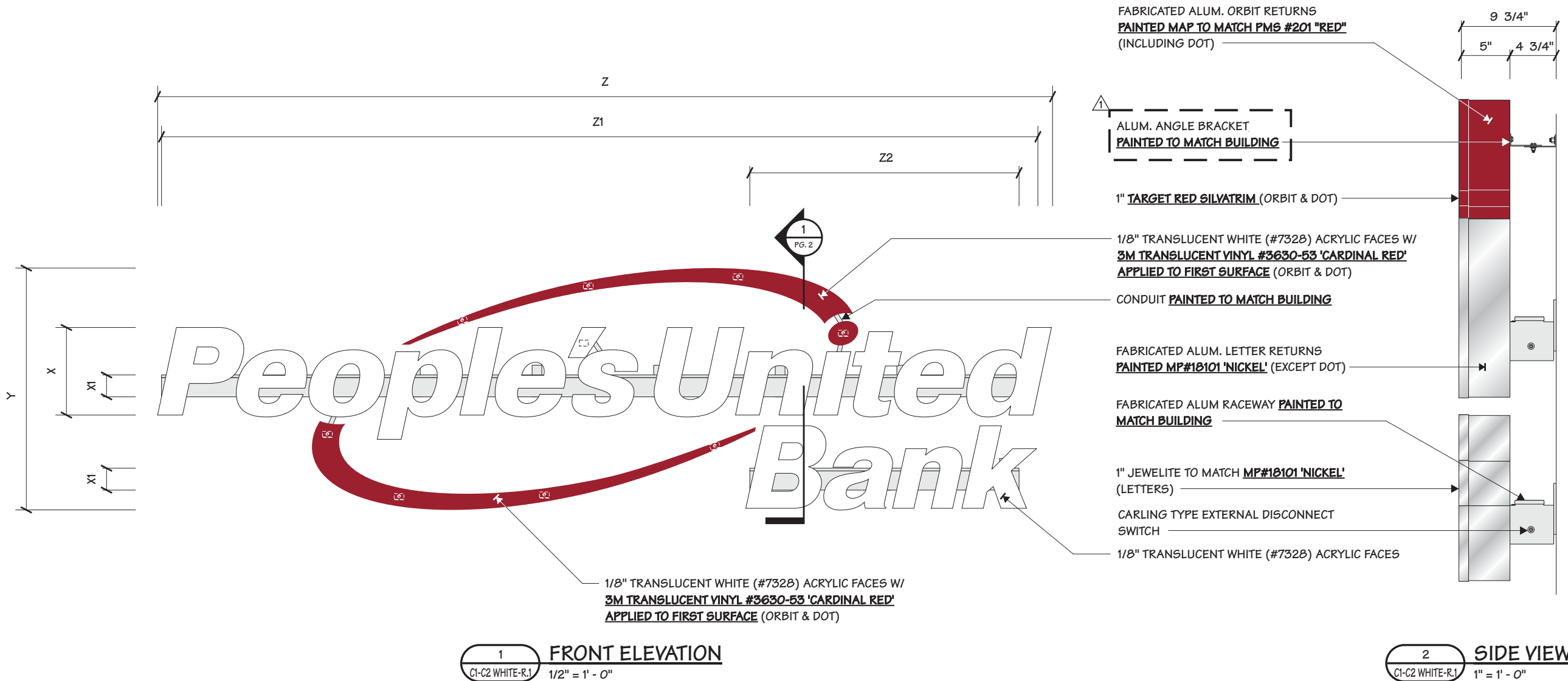
This document is the sole property of Architectural Graphics, Inc. and all design, manufacturing, reproduction, use and sale rights regarding the same are expressly forbidden. It is submitted under a confidential relationship, for a special purpose, and the recipient, by accepting this document assumes custody and agrees that this document will not be copied or reproduced in whole or in part, nor its contents revealed in any manner or to any person except for the purpose for which it was tendered, nor any special features peculiar to this design be incorporated in other projects.

Approved By _____
Date Approved _____

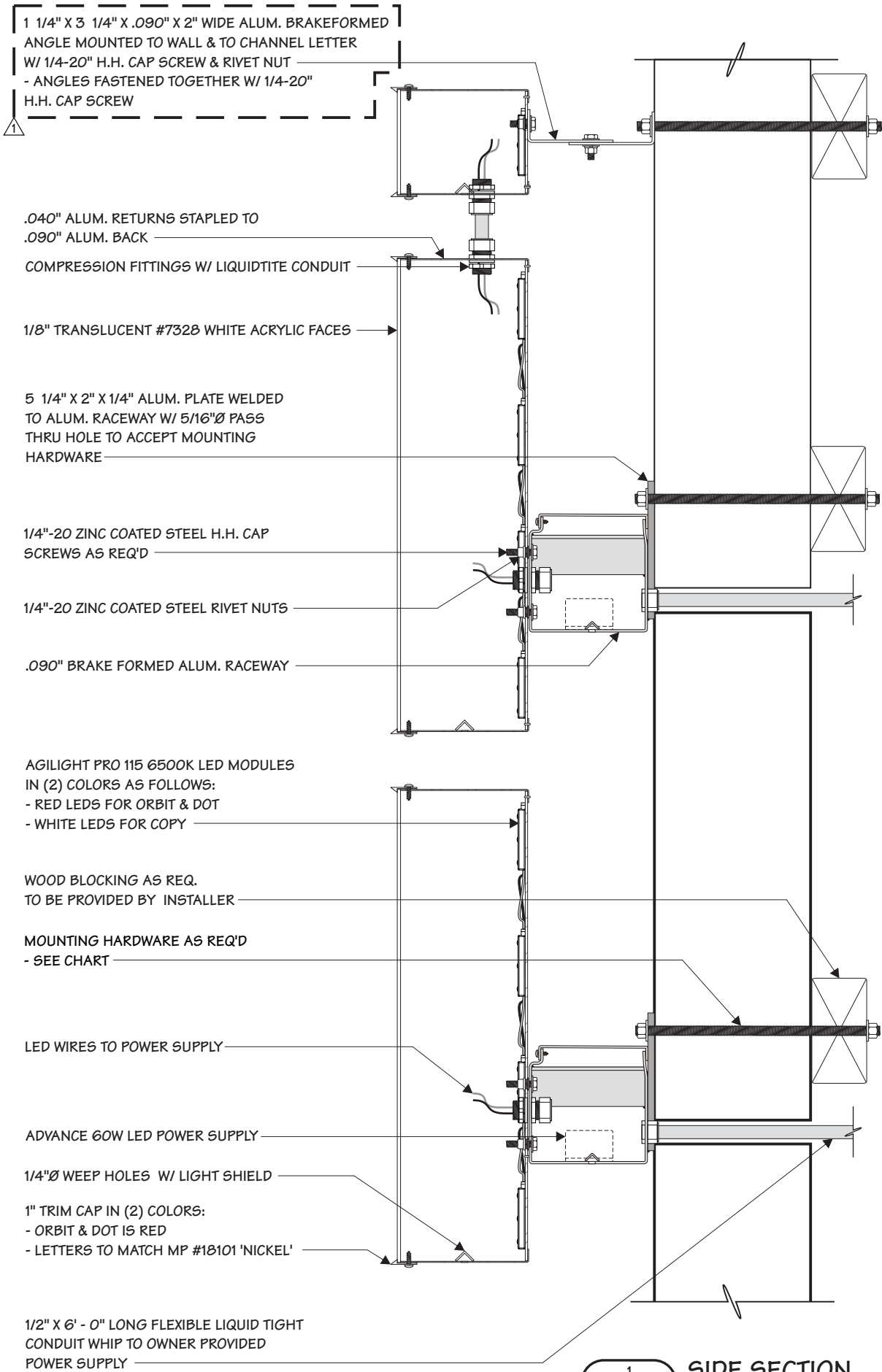
Code 07018 **Type** C

Job Number _____

Sheet Number C1-C2 WHITE-R.1 **Rev.** _____



SIGN TYPE	X ("P")	X1	Y	Z	Z1	Z2
C1-18	1' - 6"	4 1/2"	4' - 1 3/4"	15' - 4"	±15' - 0 3/16"	±4' - 7 3/8"
C2-14	1' - 2"	4 1/2"	3' - 2 5/8"	11' - 11 1/8"	±11' - 7 15/16"	±3' - 7 5/16"



1 1/4" X 3 1/4" X .090" X 2" WIDE ALUM. BRAKEFORMED ANGLE MOUNTED TO WALL & TO CHANNEL LETTER W/ 1/4"-20" H.H. CAP SCREW & RIVET NUT - ANGLES FASTENED TOGETHER W/ 1/4"-20" H.H. CAP SCREW

.040" ALUM. RETURNS STAPLED TO .090" ALUM. BACK

COMPRESSION FITTINGS W/ LIQUIDTITE CONDUIT

1/8" TRANSLUCENT #732B WHITE ACRYLIC FACES

5 1/4" X 2" X 1/4" ALUM. PLATE WELDED TO ALUM. RACEWAY W/ 5/16"Ø PASS THRU HOLE TO ACCEPT MOUNTING HARDWARE

1/4"-20 ZINC COATED STEEL H.H. CAP SCREWS AS REQ'D

1/4"-20 ZINC COATED STEEL RIVET NUTS

.090" BRAKE FORMED ALUM. RACEWAY

AGILIGHT PRO 115 6500K LED MODULES IN (2) COLORS AS FOLLOWS:
- RED LEDS FOR ORBIT & DOT
- WHITE LEDS FOR COPY

WOOD BLOCKING AS REQ. TO BE PROVIDED BY INSTALLER

MOUNTING HARDWARE AS REQ'D - SEE CHART

LED WIRES TO POWER SUPPLY

ADVANCE 60W LED POWER SUPPLY

1/4"Ø WEEP HOLES W/ LIGHT SHIELD

1" TRIM CAP IN (2) COLORS:
- ORBIT & DOT IS RED
- LETTERS TO MATCH MP #18101 'NICKEL'

1/2" X 6' - 0" LONG FLEXIBLE LIQUID TIGHT CONDUIT WHIP TO OWNER PROVIDED POWER SUPPLY

1 SIDE SECTION
C1-C2 WHITE-R.2 3/16" = 1"

MOUNTING HARDWARE CHART	MASONRY	WOOD	METAL
	1/4" ZINC PLATED STEEL THREADED ROD THRU WALL	●	●
1/4" LAGS WITH SHIELDS	●		
1/4" LAG BOLTS		●	
1/4" TOGGLE BOLTS			●

NOTE:
1) THREADED ROD WILL BE PROVIDED STANDARD - ALL OTHER HARDWARE IS TO BE PROVIDED BY THE INSTALLER AS REQ.
2) DESIGN INTENDED FOR NOT GREATER THAN 3RD STORY MOUNTING - HIGHER ELEVATIONS REQUIRE REVIEW

Project Title
PEOPLE'S UNITED BANK

Sign Type
C1-C2 WHITE-R

Drawing Type
SECTION

Date **04.21.11**

Lead Drafter **MZC**
Drawn By **MZC/BMH/RMA**
Project Mgr.

- General Sign Specifications**
- Interior Exterior
- Single Faced Double Faced
- Non-Illuminated
- Illuminated
- 120 Volts _____ Amps(+/-)
- 277 Volts _____ Amps(+/-)
- _____ Amps(+/-)
- U/L Listed Non U/L Listed
- Location _____
- Windload _____
- Area _____ Weight _____

Drawing Revisions

Drawn By	Date	Change
1 GLM	08.26.15	LED/BRKTS
2		
3		
4		
5		
6		
7		
8		
9		
10		
11		
12		

This document is the sole property of Architectural Graphics, Inc. and all design, manufacturing, reproduction, use and sale rights regarding the same are expressly forbidden. It is submitted under a confidential relationship, for a special purpose, and the recipient, by accepting this document assumes custody and agrees that this document will not be copied or reproduced in whole or in part, nor its contents revealed in any manner or to any person except for the purpose for which it was tendered, nor any special features peculiar to this design be incorporated in other projects.

Approved By _____
Date Approved _____

Code **07018** Type **C**

Job Number _____

Sheet Number **C1-C2 WHITE-R.2** Rev. _____

NOTES:
1.) PAINT INSIDE OF LOGO W/ SPRAY-LAT 'STAR BRIGHT WHITE' LIGHT ENHANCEMENT PAINT
2.) SILICONE SEAL ALL WALL PENETRATIONS

Project Title
PEOPLE'S UNITED BANK

Sign Type
C1-C2 WHITE-R

Drawing Type
LED LAYOUT

Date 04.21.11

Lead Drafter MZC
Drawn By MZC/BMH/RMA
Project Mgr.

General Sign Specifications

- Interior Exterior
 Single Faced Double Faced
 Non-Illuminated
 Illuminated
 120 Volts _____ Amps(+/-)
 277 Volts _____ Amps(+/-)
 _____ Amps(+/-)
 U/L Listed Non U/L Listed
Location _____
Windload _____
Area _____ **Weight** _____

Drawing Revisions

Drawn By	Date	Change
1 GLM	08.26.15	LED/BRKTS
2		
3		
4		
5		
6		
7		
8		
9		
10		
11		
12		

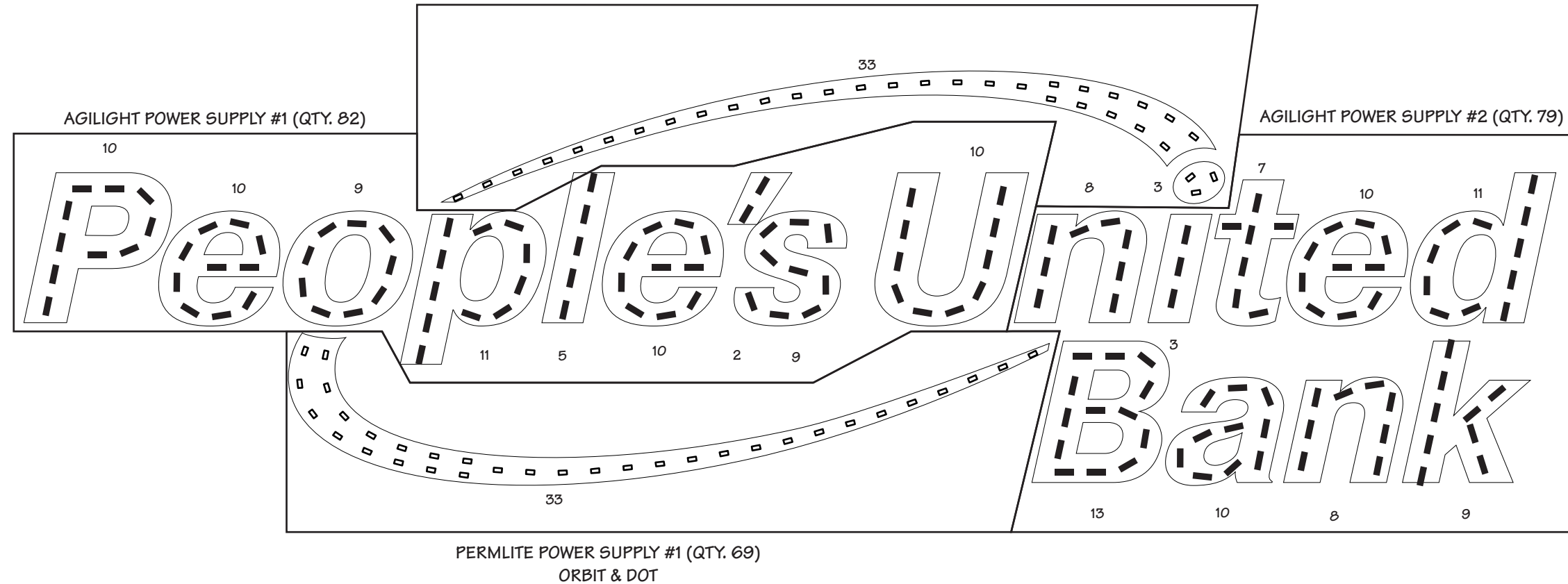
This document is the sole property of Architectural Graphics, Inc. and all design, manufacturing, reproduction, use and sale rights regarding the same are expressly forbidden. It is submitted under a confidential relationship, for a special purpose, and the recipient, by accepting this document assumes custody and agrees that this document will not be copied or reproduced in whole or in part, nor its contents revealed in any manner or to any person except for the purpose for which it was tendered, nor any special features peculiar to this design be incorporated in other projects.

Approved By _____
Date Approved _____

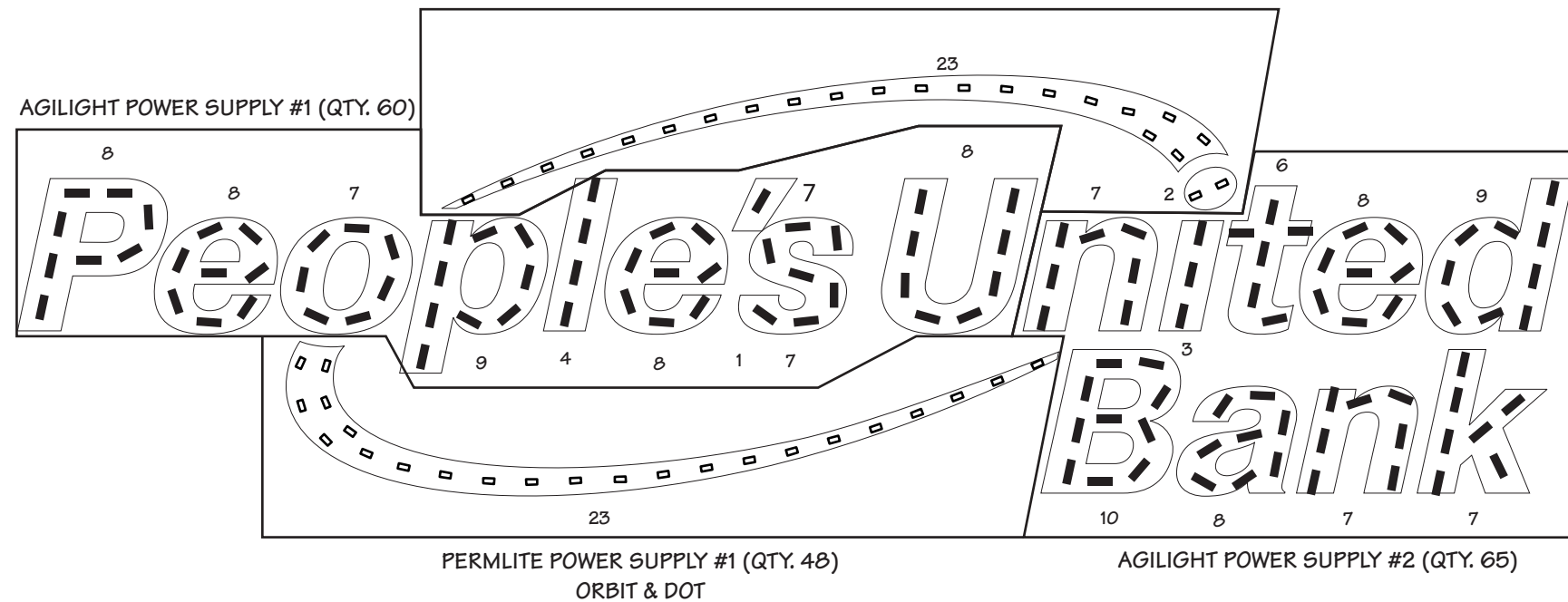
Code 07018 **Type** C

Job Number _____

Sheet Number C1-C2 WHITE-R.3 **Rev.** _____



1 LED LAYOUT - C1
 C1-C2 WHITE-R.1 3/4" = 1' - 0"



2 LED LAYOUT - C2
 C1-C2 WHITE-R.1 3/4" = 1' - 0"