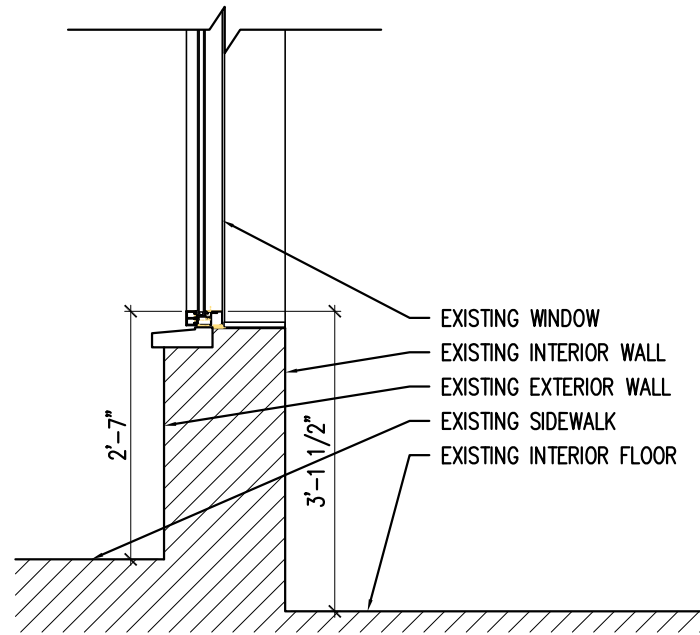
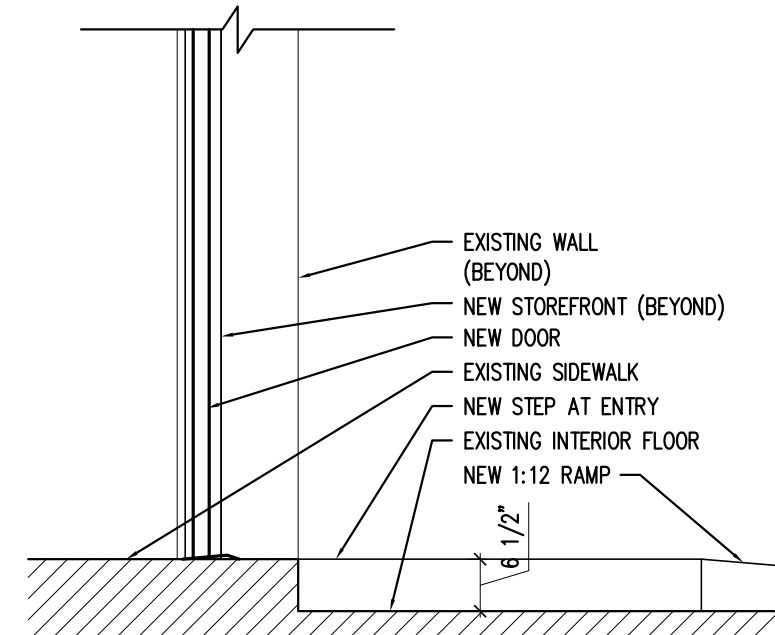


1 | ENTRY
SCALE: 1/4"=1'-0"

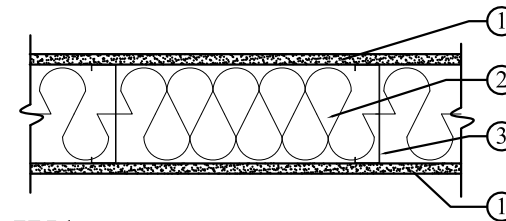


2 | EXISTING WALL SECTION
SCALE: 1/2"=1'-0"



3 | PROPOSED WALL SECTION
SCALE: 1/2"=1'-0"

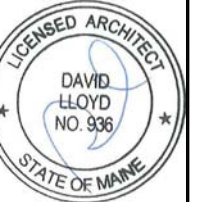
*** WALL TYPES ***



W1 TYPICAL WALL TYPE

W1 TYPICAL INTERIOR PARTITION

1. **Gypsum Board** -- 5/8 in. Type "X" GWB, 4 ft wide, attached to studs with Type S-12 steel screws spaced 8 in. OC. along edges of board and 12 in. OC in the field of the board. Joints oriented vertically and staggered on opposite sides of the assembly 48 in. OC.
2. **Metal Studs** -- 6 in. 20 guage metal studs spaced 16 in. OC.
3. **Insulation** -- 6 in. Fiberglass batt insulation friction fit in stud space.
4. **Joint Tape and Compound** -- Vinyl, dry or premixed joint compound, applied in two coats to joints and screw heads; paper tape, 2 in. wide, embedded in first layer of compound over all joints. As an alternate, nominal 3/32 in. thick gypsum veneer plaster may be applied to the entire surface of Classified veneer baseboard. Joints reinforced.
5. Walls to go to bottom of deck



ARCHETYPE architects
48 Union Wharf Portland, Maine 04101
(207) 772-6022 Fax (207) 772-4056

Date: 24 Oct 2013
Scale: AS NOTED

WALL SECTIONS
AND WALL TYPE

Project: 145 COMMERCIAL STREET
COMMERCIAL STREET
PORTLAND, ME

A3.00