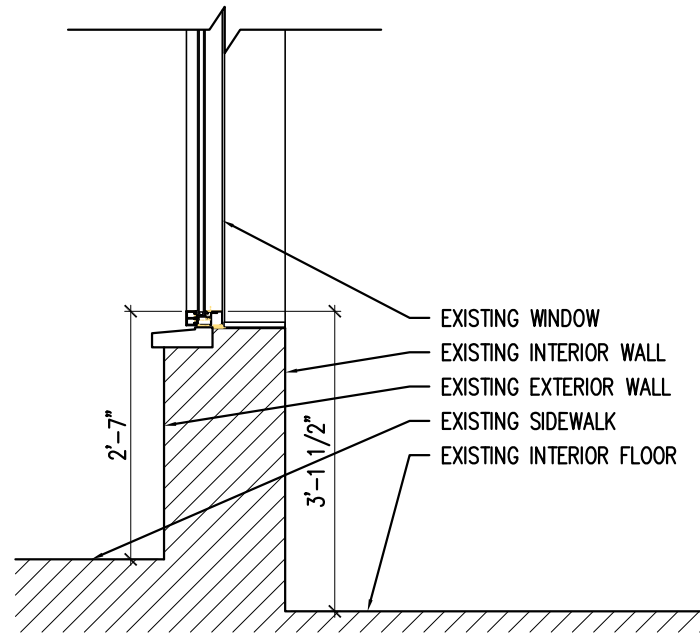
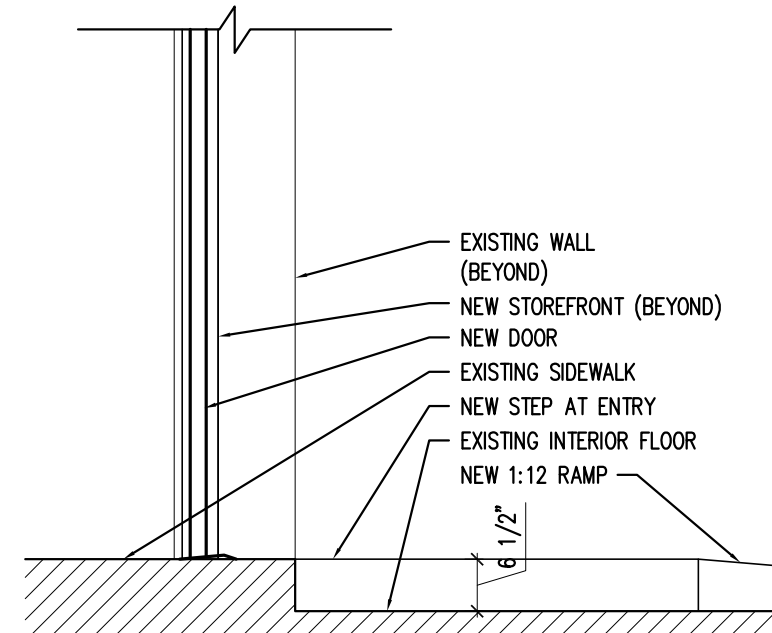


**1** | ENTRY  
 SCALE: 1/4"=1'-0"

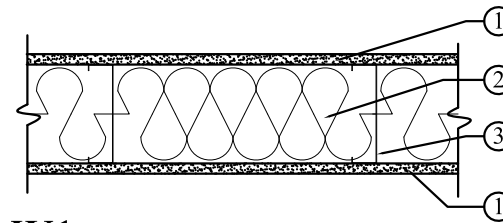


**2** | EXISTING WALL SECTION  
 SCALE: 1/2"=1'-0"



**3** | PROPOSED WALL SECTION  
 SCALE: 1/2"=1'-0"

**\* WALL TYPES \***



**W1** TYPICAL INTERIOR PARTITION

1. **Gypsum Board** -- 5/8 in. Type "X" GWB, 4 ft wide, attached to studs with Type S-12 steel screws spaced 8 in. OC. along edges of board and 12 in. OC in the field of the board. Joints oriented vertically and staggered on opposite sides of the assembly 48 in. OC.
2. **Metal Studs** -- 6 in. 20 guage metal studs spaced 16 in. OC.
3. **Insulation** -- 6 in. Fiberglass batt insulation friction fit in stud space.
4. **Joint Tape and Compound** -- Vinyl, dry or premixed joint compound, applied in two coats to joints and screw heads; paper tape, 2 in. wide, embedded in first layer of compound over all joints. As an alternate, nominal 3/32 in. thick gypsum veneer plaster may be applied to the entire surface of Classified veneer baseboard. Joints reinforced.
5. Walls to go to bottom of deck



**ARCHETYPE** architects  
 48 Union Wharf Portland, Maine 04101  
 (207) 772-6022 Fax (207) 772-4056

Date: 24 Oct 2013  
 Scale: AS NOTED

WALL SECTIONS  
 AND WALL TYPE

Project: 145 COMMERCIAL STREET  
 COMMERCIAL STREET  
 PORTLAND, ME

**A3.00**