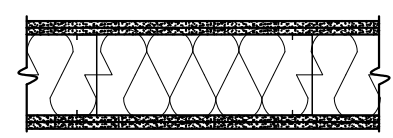


FLOOR PLAN
SCALE: 1/8"=1'-0"

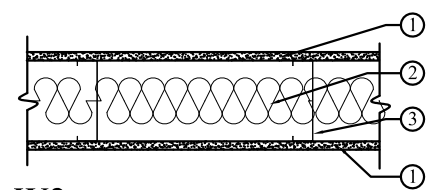
*** WALL TYPES ***



W1 2 HOUR WALL ASSEMBLY

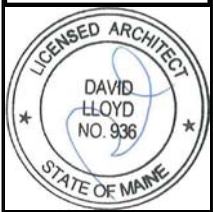
W1 WALL ASSEMBLY -2 HOUR
GA FILE NO. WP1450 - 2 HOUR FIRE - 60-64 STC SOUND
 Sound Test: RAL TL07-359, 11-8-07
 Fire Test: UL R3660, 07NK14500, 8-16-07 UL DESIGN V450

Base layer -- 5/8 in. thick proprietary Type X gypsum wallboard or gypsum veneer base applied at right angles to each side of 6" proprietary steel studs 16" oc with 1" Type S drywall screws 16" oc. **Face layer** -- 5/8" proprietary Type X gypsum wallboard or gypsum veneer base applied at right angles to studs with 1-5/8" Type S drywall screws 16" o.c. Face layer offset not less than 12" from base layer horizontal joints. 6" glass fiber insulation in stud cavity.
 Horizontal joints on opposite sides need not be staggered or backed.
 Wall to go to bottom of deck



W2 TYPICAL WALL TYPE

- W2 TYPICAL INTERIOR PARTITION**
1. **Gypsum Board** -- 5/8 in. Type "X" GWB, 4 ft wide, attached to studs with Type S-12 steel screws spaced 8 in. OC. along edges of board and 12 in. OC in the field of the board. Joints oriented vertically and staggered on opposite sides of the assembly 48 in. OC.
 2. **Metal Studs** -- 6 in. 20 gauge metal studs spaced 16 in. OC.
 3. **Insulation** -- 6 in. Fiberglass batt insulation friction fit in stud space.
 4. **Joint Tape and Compound** -- Vinyl, dry or premixed joint compound, applied in two coats to joints and screw heads; paper tape, 2 in. wide, embedded in first layer of compound over all joints. As an alternate, nominal 3/32 in. thick gypsum veneer plaster may be applied to the entire surface of Classified veneer baseboard. Joints reinforced.
 5. Walls to go to bottom of deck



ARCHETYPE
 architects
 48 Union Wharf Portland, Maine 04101
 (207) 772-6022 Fax (207) 772-4056

Date: 10 July 2013 Scale: 1/8"=1'-0"
FLOOR PLAN

Project: **145 COMMERCIAL STREET**
 COMMERCIAL STREET
 PORTLAND, ME

A1.0