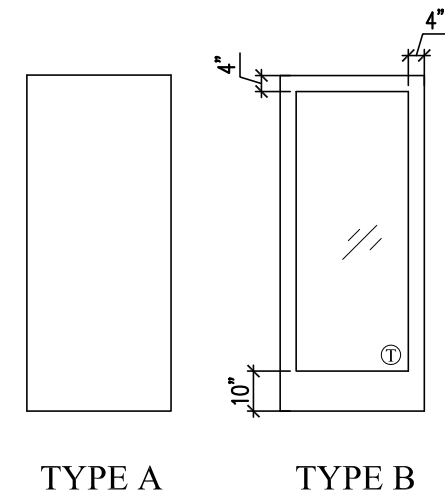


* DOOR SCHEDULE *

No.	SIZE	DOOR		FINISH	THRESH	FRAME		REMARKS
	W x H x T	Type	Material			Material	Finish	
01	3'-0" x 7'-0" x 1 3/4"	A	Birch Faced w/ 45 min. Mineral Core	Poly	Alum	HM	Ptd.	45 min. Rated Door
02	(2) 3'-0" x 7'-0" x 1 3/4"	B	Aluminum	Factory Finish	Alum	Aluminum	Fact. Fi.n.	Match Existing Storefront
03	(2) 3'-0" x 7'-0" x 1 3/4"	B	Aluminum	Factory Finish	Alum	Aluminum	Fact. Fi.n.	Match Existing Storefront
04	(2) 3'-0" x 7'-0" x 1 3/4"	B	Aluminum	Factory Finish	Alum	Aluminum	Fact. Fi.n.	Match Existing Storefront
05	3'-0" x 7'-0" x 1 3/4"	A	SCW	Poly		HM	Ptd.	
06	3'-0" x 7'-0" x 1 3/4"	A	SCW	Poly		HM	Ptd.	Panic Hardware
07	3'-0" x 7'-0" x 1 3/4"	A	SCW	Poly		HM	Ptd.	
08	3'-0" x 7'-0" x 1 3/4"	A	SCW	Poly		HM	Ptd.	
09	3'-0" x 7'-0" x 1 3/4"	A	SCW	Poly		HM	Ptd.	
10	3'-0" x 7'-0" x 1 3/4"	A	Birch Faced w/ 45 min. Mineral Core	Poly	Alum	HM	Ptd.	45 min. Rated Door Panic Hardware

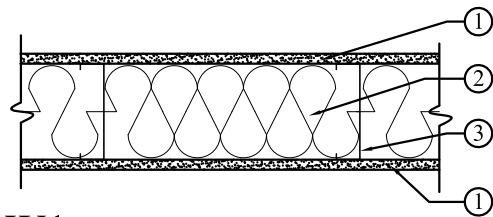
* DOOR TYPES *



TYPE A

TYPE B

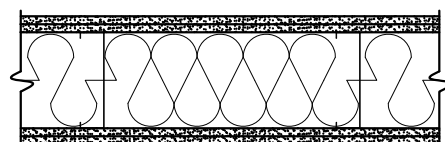
* WALL TYPES *



W1 TYPICAL WALL TYPE

W1 TYPICAL INTERIOR PARTITION

- Gypsum Board** -- 5/8 in. Type "X" GWB, 4 ft wide, attached to studs with Type S-12 steel screws spaced 8 in. OC. along edges of board and 12 in. OC in the field of the board. Joints oriented vertically and staggered on opposite sides of the assembly 48 in. OC.
- Metal Studs** -- 6 in. 20 gauge metal studs spaced 16 in. OC.
- Insulation** -- 6 in. Fiberglass batt insulation friction fit in stud space.
- Joint Tape and Compound** -- Vinyl, dry or premixed joint compound, applied in two coats to joints and screw heads; paper tape, 2 in. wide, embedded in first layer of compound over all joints. As an alternate, nominal 3/32 in. thick gypsum veneer plaster may be applied to the entire surface of Classified veneer baseboard. Joints reinforced.



W2 2 HOUR WALL ASSEMBLY

W2 WALL ASSEMBLY -2 HOUR

GA FILE NO. WP1450 -- 2 HOUR FIRE - 60-64 STC SOUND

Sound Test: RAL TL07-359, 11-8-07
Fire Test: UL R3660, 07NK14500, 8-16-07 UL DESIGN V450

Base layer -- 5/8 in. thick proprietary Type X gypsum wallboard or gypsum veneer base applied at right angles to each side of 6" proprietary steel studs 16" oc with 1" Type S drywall screws 16" oc. **Face layer** -- 5/8" proprietary Type X gypsum wallboard or gypsum veneer base applied at right angles to studs with 1-5/8" Typs S drywall screws 16" o.c. Face layer offset not less than 12" from base layer horizontal joints. 6" glass fiber insulation in stud cavity.
Horizontal joints on opposite sides need not be staggered or backed.



ARCHETYPE
architects
48 Union Wharf Portland, Maine 04101
(207) 772-6022 Fax (207) 772-4056

Date: 11 December 2012
Scale: AS NOTED

DOOR SCHEDULE
& WALL TYPES

Project: 145 COMMERCIAL STREET
COMMERCIAL STREET
PORTLAND, ME

A6.00