



©2011 STARBUCKS COFFEE COMPANY

STARBUCKS COFFEE COMPANY
 2401 UTAH AVENUE SOUTH
 SEATTLE, WASHINGTON 98134
 (206) 318-1575

THESE DRAWINGS AND SPECIFICATIONS ARE CONFIDENTIAL AND SHALL REMAIN THE SOLE PROPERTY OF STARBUCKS CORPORATION, WHICH IS THE OWNER OF THE COPYRIGHT IN THIS WORK. THEY SHALL NOT BE REPRODUCED IN WHOLE OR IN PART, SHARED WITH THIRD PARTIES OR USED IN ANY MANNER ON OTHER PROJECTS OR EXTENSIONS TO THIS PROJECT WITHOUT THE PRIOR WRITTEN CONSENT OF STARBUCKS CORPORATION. THESE DRAWINGS AND SPECIFICATIONS ARE INTENDED TO EXPRESS DESIGN INTENT FOR A PROTOTYPICAL STARBUCKS STORE (WHICH IS SUBJECT TO CHANGE AT ANYTIME) AND DO NOT REFLECT ACTUAL SITE CONDITIONS. NEITHER PARTY SHALL HAVE ANY OBLIGATION OR LIABILITY TO THE OTHER EXCEPT AS STATED ABOVE. UNTIL A WRITTEN AGREEMENT IS FULLY EXECUTED BY BOTH PARTIES.

ARCHITECT OF RECORD

NORR
 ARCHITECTS PLANNERS
 325 N. LaSalle St. Suite 700 Chicago, IL 60654
 1312.424.2400 | 1312.424.2424 | www.norr.com

353 Marshall Avenue
 St. Louis, Missouri 63119
 Phone (314) 774-7283
 Fax (314) 372-3514
Alkemeyer & Associates
 Engineering Consultants
 Mechanical • Electrical • Plumbing

Revision Schedule				
Rev	Date	By	Description	
1	02-27-13		Building Depart. Comments	

PROJECT NAME: **COMMERCIAL STREET**
 PROJECT ADDRESS: **145 COMMERCIAL STREET
 PORTLAND, ME 04101
 CUMBERLAND COUNTY**

STORE #: 19384
 PROJECT #: 58862-001
 CONCEPT: MCS
 PALETTE: HERITAGE
 ISSUE DATE: JAN. 11, 2013
 DESIGN MANAGER: E. ZAKAMAREK
 LEED® AP:
 PRODUCTION DESIGNER: NORR ILLINOIS
 CHECKED BY: CLL / SMD

SHEET TITLE:
Plumbing Waste/Drain Plan
 SCALE: 1/4" = 1'-0"

SHEET NUMBER:
P-112

Plumbing Design Notes

- A. Furnish and install a complete and operating system. All items are not necessarily shown.
- B. Plumbing Contractor responsible for site investigation prior to start of work to reveal full scope of work.
- C. All Plumbing lines to be routed such that they are not visible to customers.
- D. Refer to manufacturer specifications for location of connections unless otherwise noted.
- E. Coordinate with Electrical Contractor for power connection to all plumbing equipment.
- F. Dimensions are to finish face unless otherwise noted.
- G. Refer to detail sheets for plumbing fittings located in casework.
- H. Cold water supply lines inside casework and bar area to be covered with 1/2" (10mm) thick self sealing, sectional closed-cell foam insulation. Refer to specifications for hot water supply line insulation requirements.
- J. Contractor shall contact water filter supplier before the time that the filter system is to be started up.
- K. Verify proper water system with water test results.

Sheet Notes

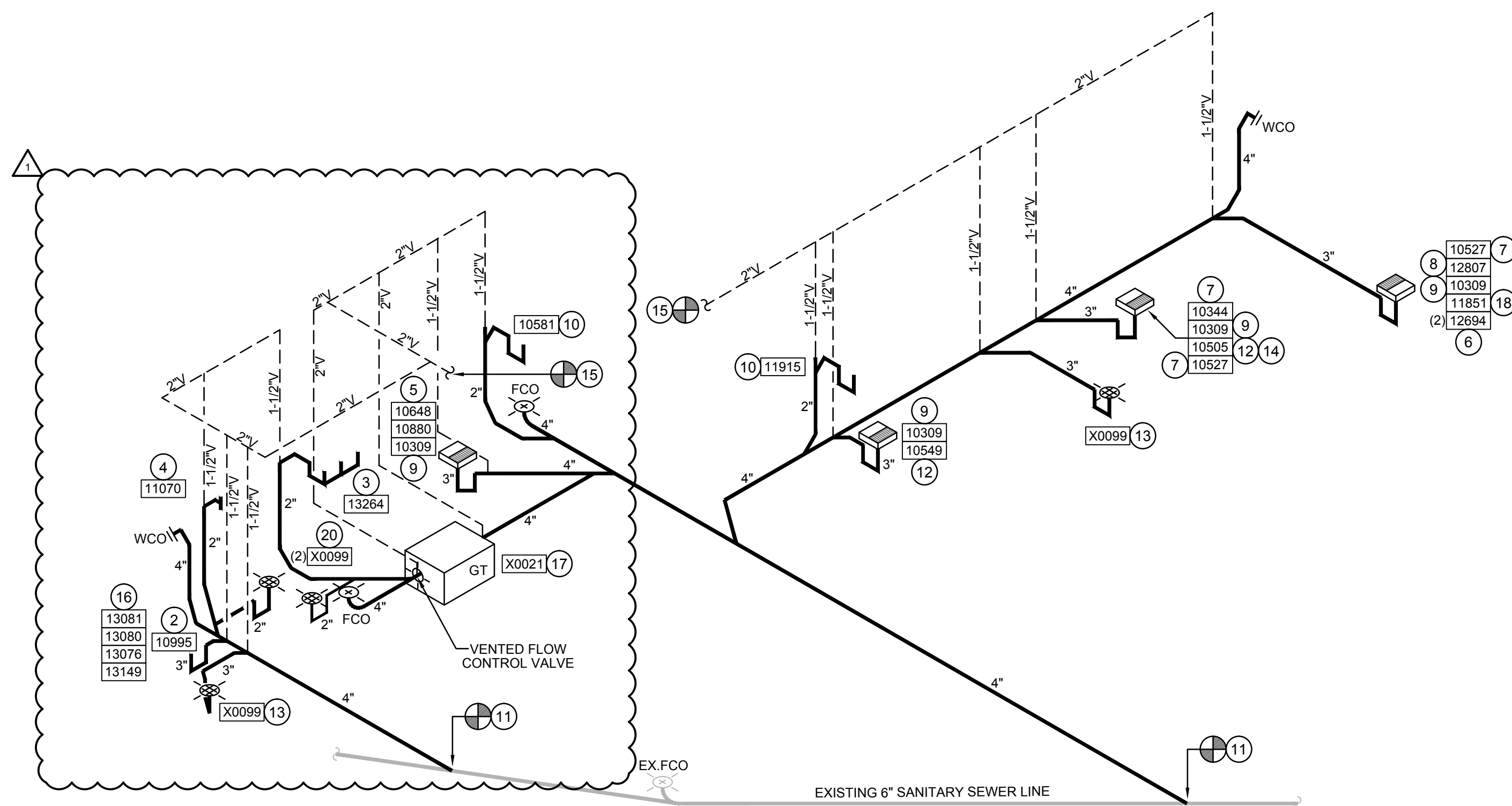
- 1. 1" INDIRECT DRAIN FROM DRIP PAN AND 3/4" PRESSURE RELIEF FROM WATER HEATER TO FLOOR DRAIN.
- 2. 3" WASTE FROM MOP SINK.
- 3. 2" DIRECT DRAIN FROM COMPARTMENT SINK.
- 4. 2" DIRECT DRAIN FROM DISHWASHER.
- 5. 5/8" I.D. F.P.T. FROM DRAIN ON ICE MACHINE TO INDIRECT DRAIN AT FLOOR SINK.
- 6. 5/8" DRAIN HOSE TO INDIRECT DRAIN RISER. SEE DETAIL ON SHEET P-501.
- 7. 1" INDIRECT INSULATED DRAIN LINE FROM ICE BIN DROP TO FLOOR SINK.
- 8. 3/4" INDIRECT DRAIN FROM WATER STATION DRAIN BOARD TO FLOOR SINK.
- 9. 3" WASTE FROM FLOOR SINK. GENERAL CONTRACTOR MAY NEED TO MODIFY CABINET BASE TO ALLOW ACCESS TO FLOOR SINK.
- 10. 2" WASTE FROM SINK.
- 11. MAKE CONNECTION TO EXISTING SANITARY SEWER WITHIN PREMISES. VERIFY EXACT LOCATION, INVERTS AND REQUIREMENTS ON SITE.
- 12. 1-1/2" INDIRECT DRAIN TO FLOOR SINK. IF INDIRECT NOT ALLOWED, PROVIDE 2" DIRECT DRAIN. SEE DETAIL ON SHEET P-501.
- 13. 3" WASTE FROM FLOOR DRAIN.
- 14. 1-1/2" INDIRECT DRAIN FROM PITCHER RINSER SINK.
- 15. MAKE CONNECTION TO EXISTING VENT SYSTEM (MIN 2") IN PREMISES BY LANDLORD. VERIFY EXACT LOCATION, SIZE AND REQUIREMENTS ON SITE. LANDLORD TO EXTEND VENT LINE TO ABOVE ROOF AND MAINTAIN 10 FOOT CLEARANCES TO ANY AIR INTAKES.
- 16. 3/4" INDIRECT DRAIN FROM WATER EQUIPMENT TO MOP SINK. CONTRACTOR TO VERIFY EXACT REQUIREMENTS WITH EQUIPMENT SUPPLIER.
- 17. PROVIDE AND INSTALL GREASE TRAP RECESSED IN FLOOR AS SPECIFIED IN THE GREASE TRAP CALCULATION ON THIS SHEET. VERIFY EXACT LOCATION IN FIELD. PROVIDE WITH VENTED FLOW CONTROL.
- 18. CLOVER BREWER: ROUTE 1" FLEXIBLE DRAIN HOSE THROUGH COUNTER INTO A RIGID PIPE. ROUTE 1" RIGID PIPE INDIRECT DRAIN TO FLOOR SINK.
- 19. INDIRECT WASTE LINE: ROUTE CONCEALED AND INSTALL PER CODE WITH 2% SLOPE TO INDIRECT RECEPTOR (SEE DETAIL ON SHEET P-501). NOT ALL INDIRECT WASTE LINES ARE SHOWN BUT SHALL BE INSTALLED AS NEEDED.
- 20. 3" WASTE FROM TELL-TALE FLOOR DRAIN FROM DIRECT CONNECTED DISHWASHER AND COMPARTMENT SINK PER SECTION 704.3 OF THE 2009 UPC. VENT AS REQUIRED BY CODE. PROVIDE ONLY IF REQUIRED BY AHJ.

GREASE TRAP CALCULATION

EQUIPMENT	DESCRIPTION	COMPT. SIZE	FLOW RATE REQUIRED
13264	3-COMP SINK	3(16"x19"x14") = 12,768 CU23(1.75)=	41.5
TOTAL GPM =			41.5 GPM
2 MIN. DRAIN TIME			20.75 GPM
TOTAL FLOW RATE SUPPLIED			25 GPM
TOTAL GREASE CAPACITY SUPPLIED			75 LBS

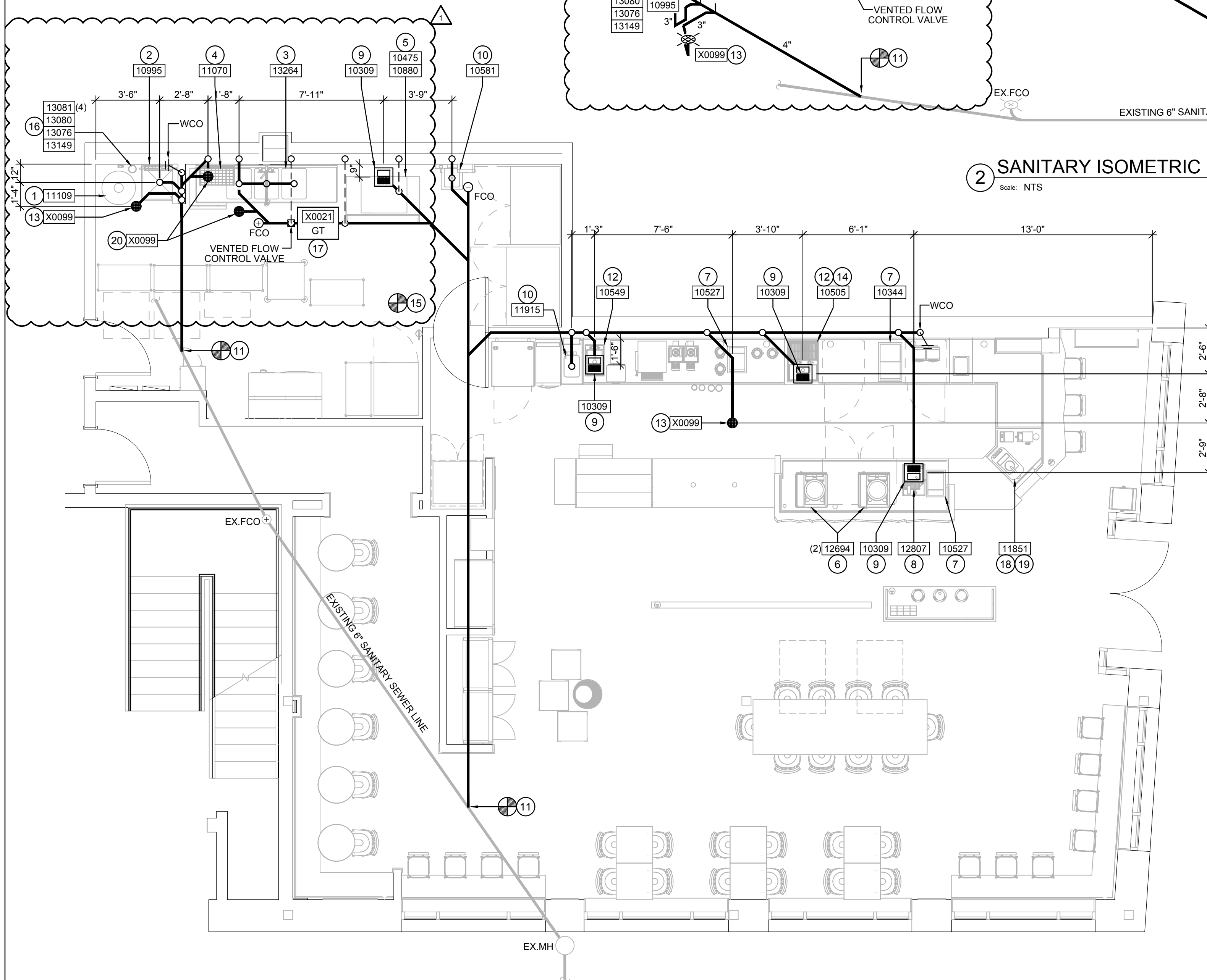
PROVIDE A SCHIER MODEL GB-25 FLUSH WITH FLOOR GREASE TRAP OR APPROVED EQUAL. VENT PER LOCAL CODE.

--ATTENTION, ACTION REQUIRED PRIOR TO INSTALLATION --
 ADDITIONAL PLUMBING NEEDED: CHECK VALVE INSTALLED BETWEEN WATER HEATER & SOFTENER LOCATION. SOFT WATER LINE RUN TO WATER HEATER FROM SOFTENER LOCATION. SERVICE BYPASS FOR SOFTENER.
 ADDITIONAL ELECTRICAL NEEDED: DUPLEX OUTLET.
 18" DUNNAGE RACK FOR SOFTENER.



2 SANITARY ISOMETRIC DIAGRAM

Scale: NTS



1 PLUMBING WASTE / DRAIN PLAN

Scale: 1/4" = 1'-0"

