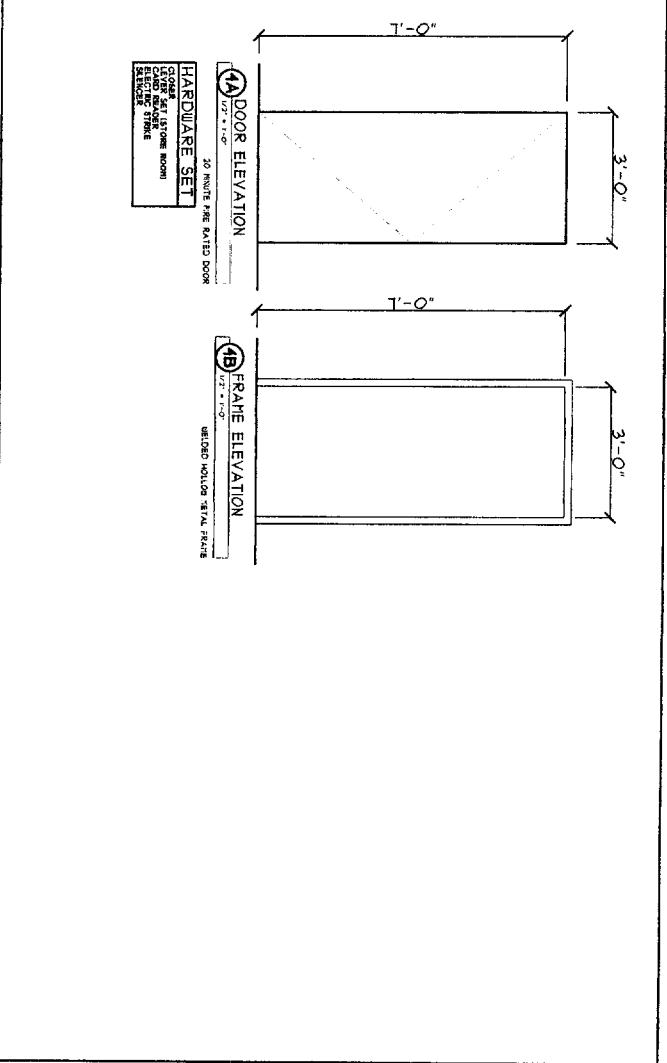
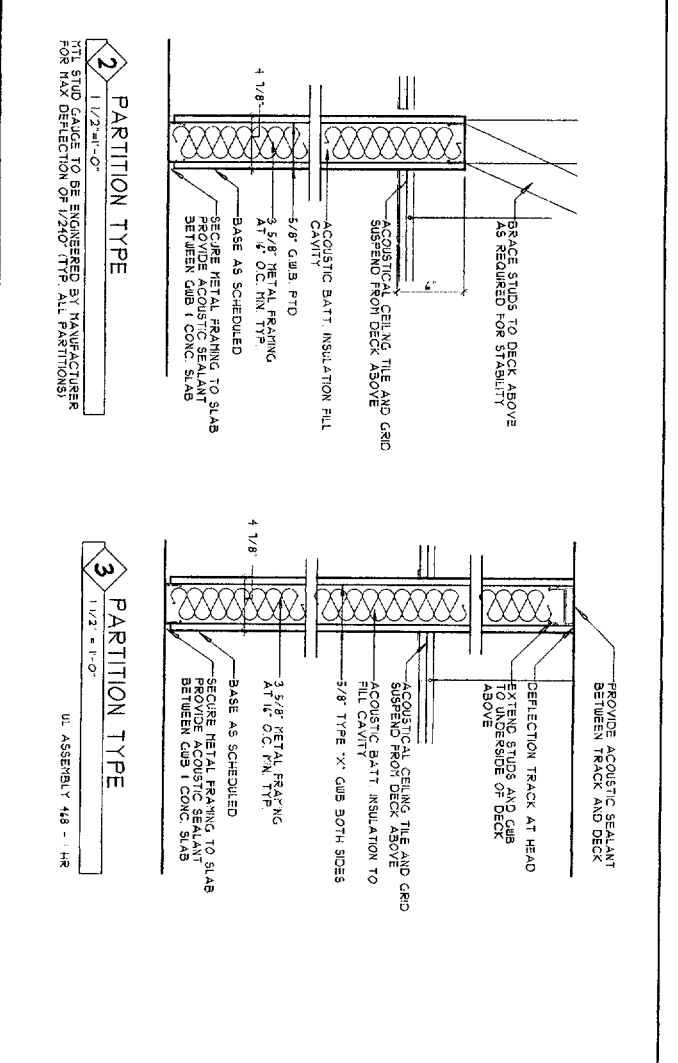
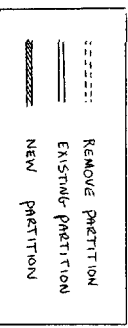


CONSTRUCTION PLAN  
1/8" = 1'-0"



**SHEET NOTES**

- FOR ADDITIONAL GENERAL AND CONSTRUCTION NOTES SEE COVER SHEET AND
- REPAIR NOTES:
- 1. PATCH ALL PERIMETER WALLS AT ALL DEPOLISHED PARTITION LOCATIONS, PATCH AND FINISH MULLS, TOPPIES, AND WINDOW RECESSES FOR A SMOOTH AND AS NEW FINISH.
- 2. REMOVE GIB FROM ABANDONED POWER AND DATA RECEPTACLES, GIB PATCH, POWER / DATA RECEPTACLES, GIB PATCH, AND PAINT FOR A SMOOTH AND AS NEW FINISH.
- 3. PATCH NEW CONSTRUCTION, NTS EXISTING-TO-BERIAN AREAS TO ACHIEVE A CONSISTENT MATCHING APPEARANCE OF THE TRANSITIONS BETWEEN THE NEW AND EXISTING-TO-BERIAN PLANES OF MATERIALS, GROUTING LINES, CREASES, OR JOINTS, WHERE NEW AND EXISTING FINISHES MEET.
- CONSTRUCTION NOTES:
- 4. UNLESS OTHERWISE INDICATED, CONSTRUCT NEW PARTITIONS PER PARTITION TYPE 1.
- 5. PROVIDE WOOD BLOCKING IN WALL AS REQUIRED AT ALL NEW UTILITY SHELVES, ADJUSTABLE SHELVES, AND UPPER CABINETS.
- 6. COAT RACK SYSTEM IN COAT ROOM 805 TO BE GLAND 8000C-9L IN SKIN ALUMINUM FINISH.
- 7. FOLDING BALL PARTITION SYSTEM TO BE OPERATED, CONTINGENT ON FINISHED FINANCIAL COMPLAINT, ACOUSTICAL, FIRELESS PASS DOOR, AND FABRIC FINISH, STC 50.
- 8. NEW PREFABRICATED SHOWER STALL TO BE INSTALLED IN BATH INDUSTRIES ACCESS/BATH BATH SHOWER, AND HANDHELD SHOWER HEAD, OLDING SINGLE LEVEL, BUREAU/CHAIR ACCESS DRINKING FOOTFAN - BOPFHINC.

**LEGEND**

**Signer Harris ARCHITECTS**  
160 Boylston ST  
Boston MA 02116  
617 426 6200  
617 426 6256 FAX  
signerharris.com

*3rd Floor*

**Harvard Pilgrim Health Care**  
1 MARKET STREET, 3RD FLOOR  
PORTLAND, ME

**CONSTRUCTION PLAN**

REV #	DATE	REVISION

14 APRIL 2006  
DRAWN BY: VP  
CHECKED BY: WH  
SCALE: AS NOTED

**A1.1**