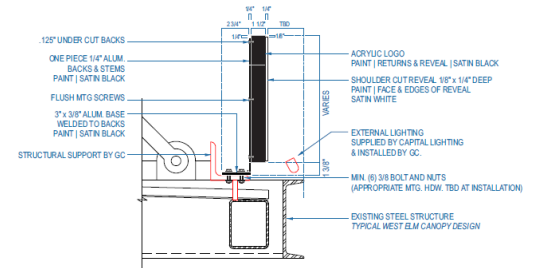
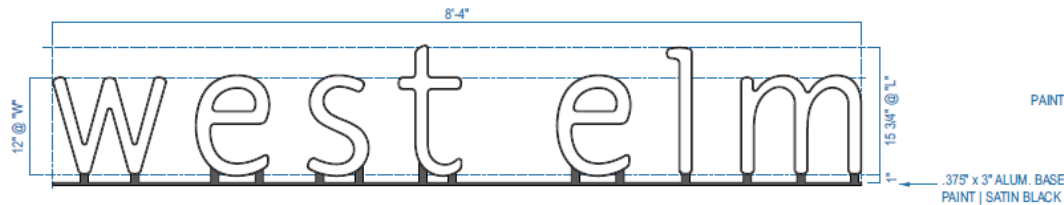


# West Elm Sign Q Details

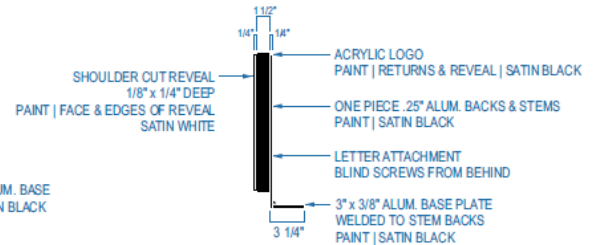


**SIGN Q** STEM MTD. PLATE LETTERS | TYPICAL SECTION  
Scale: 1 1/4" = 1'-0"



**SIGN Q** 10" STEM MOUNTED PLATE LETTERS | FRONT VIEW  
Scale: 3/4" = 1'-0" QTY. REQ'D: ONE (1)

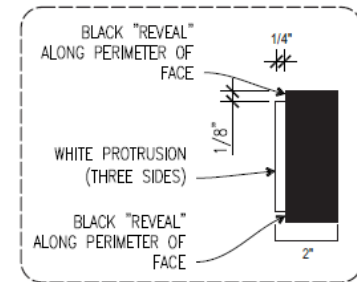
7.49 SQ. FT.



**SIDE VIEW**  
Scale: NTS



**SIGN Q** 10" STEM MOUNTED PLATE LETTERS | DETAIL  
Scale: 1" = 1'-0"



**SECTION | SHOULDER CUT DETAIL**  
Scale: NTS



Client & Location  
**west elm** 164 Middle St  
Portland ME

Customer Approval Signature

Revisions

Drawing ID

Date  
5.31.17

Page #

Drawn By

Sales Rep

WO #