

F

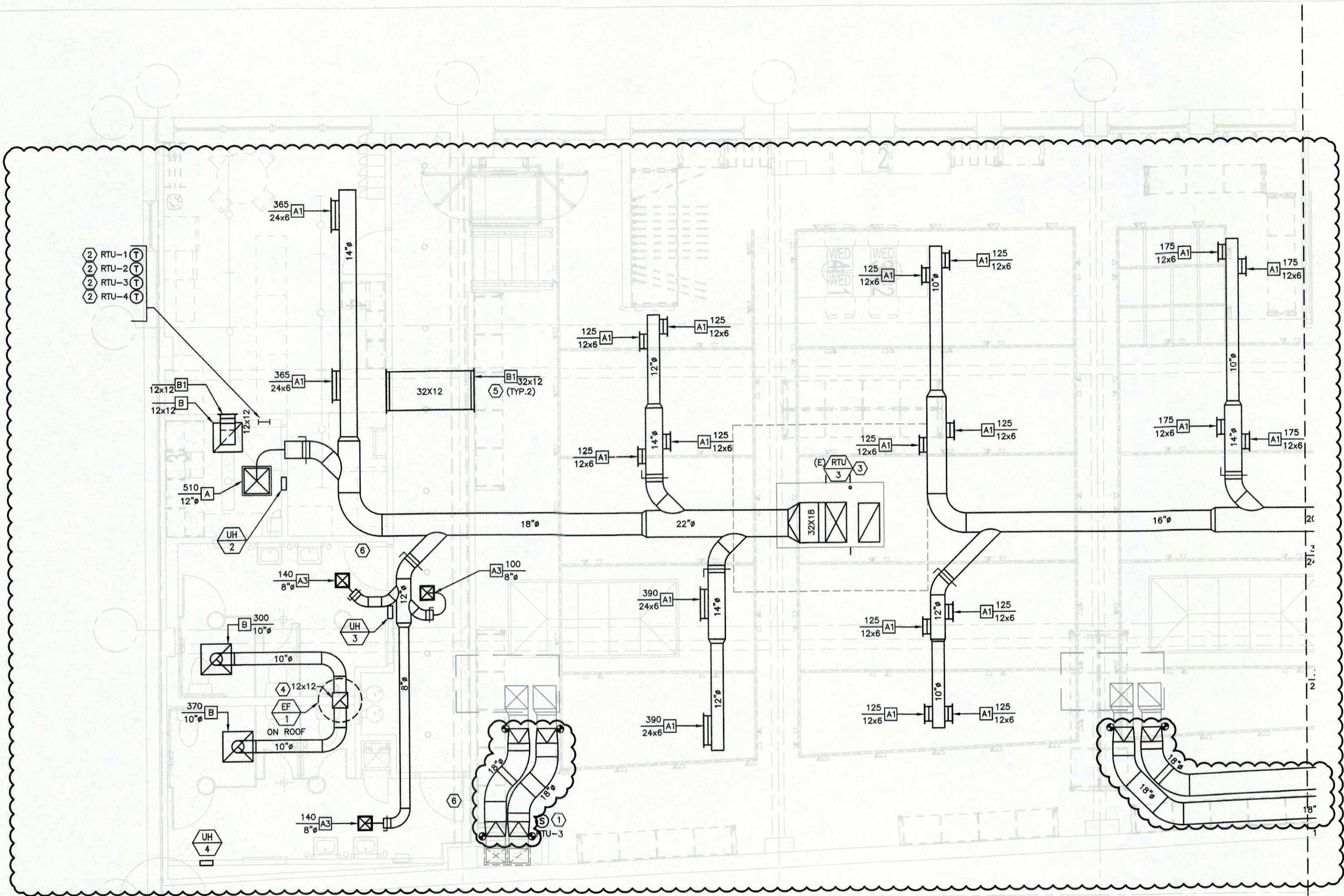
E

D

C

B

A



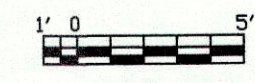
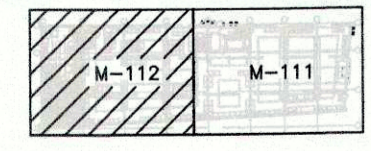
**GENERAL NOTES**

- CONTRACTOR TO VERIFY ALL EXISTING CONDITIONS PRIOR TO BID.
- ALL THERMOSTATS AND SENSORS SHOWN IN APPROXIMATE LOCATIONS. COORDINATE THE EXACT LOCATIONS WITH ARCHITECT.
- KEEP ALL DUCTWORK AS TIGHT TO STRUCTURE AS POSSIBLE. NOTIFY ARCHITECT IF ANY DISCREPANCIES ARE FOUND.

**KEYED NOTES**

- REMOTE TEMPERATURE SENSOR PROVIDED BY OWNER WITH LC&D PACKAGE. THE MOUNTING HEIGHT SHALL BE 48" A.F.F. CENTERED ON COLUMN. CONFIRM EXACT LOCATION WITH G.C. PRIOR TO ROUGH-IN. INSTALL CONTROL WIRING IN CONDUIT.
- PROGRAMMABLE THERMOSTAT PROVIDED BY OWNER WITH LC&D PACKAGE. MECHANICAL CONTRACTOR TO INSTALL 24V WIRING BETWEEN HVAC UNIT AND THERMOSTAT. THE MOUNTING HEIGHT SHALL BE 48" A.F.F. CONFIRM EXACT LOCATION WITH G.C. PRIOR TO ROUGH-IN. THE CONTRACTOR TO PROGRAM HVAC EQUIPMENT THERMOSTAT, INITIAL OPERATION HOURS, AND TEMPERATURE SET POINTS. ADJUST THE OPERATIONAL HOURS WHEN OBTAINED BY THE G.C..
- CONTRACTOR TO VERIFY SMOKE DETECTOR IS EXISTING. PROVIDE AND INSTALL DUCT MOUNTED SMOKE DETECTOR IF NOT EXISTING.
- ROUTE TOILET EXHAUST DUCT UP TO NEW FAN (EE-1) ON ROOF. PROVIDE & INSTALL EE-1, PER SCHEDULE, ON EXISTING ROOF CURB.
- PROVIDE RETURN AIR TRANSFER OPENING IN THE WALL HIGH AS POSSIBLE. PROVIDE GRILLES AS SPECIFIED ON EXPOSED SIDE OF OPENING. MOUNT GRILLE "UP SIDE DOWN" TO PREVENT VIEW THROUGH THE DEVICE. COORDINATE THE EXACT LOCATION TO AVOID CONFLICT WITH OTHER ELEMENTS.
- UNDERCUT DOOR BY 1" TO ALLOW RETURN AIR FLOW.

**NOTE:**  
ALL RIGID ROUND AND FLAT OVAL DUCT SHALL BE SPIRAL WOUND, TYPICAL.



OWNER: **WILLIAMS-SONOMA, INC.**  
4615 Vaughn Ranch Road, Suite 200  
Austin, Texas 78730-2314 USA  
512.744.4400 main 512.744.4444 fax  
www.williams-sonoma.com

San Francisco, CA 94109  
T 415 616 8602  
F 415 439 8164  
www.williams-sonomainc.com

**EEA**  
EEA Consulting Engineers  
6615 Vaughn Ranch Road, Suite 200  
Austin, Texas 78730-2314 USA  
512.744.4400 main 512.744.4444 fax  
www.eea.com

State of Registration: MAINE  
Firm Registration No. N/A  
EEA Project No. 20166558

DRAWN BY: ARC  
CHECKED BY: BKK

**PRELIMINARY DESIGN DOCUMENT**

Not Intended for Construction, Bidding or Permit. This document is released under the authority of:  
Registration Name: MICHAEL N. HART  
Serial No. 13002

**west elm**  
Downtown Portland  
164 Middle Street  
Portland, ME 04101  
PROJECT #006-160335.00

ISSUED / REVISED	DATE
PRELIMINARY SET	09/08/18
LL COORDINATION SET	11/08/18
LL/PERMIT SET	11/21/18
BID SET	1/26/17
MSK-2	3/28/17

PARTIAL FIRST FLOOR HVAC PLAN

**M-112**