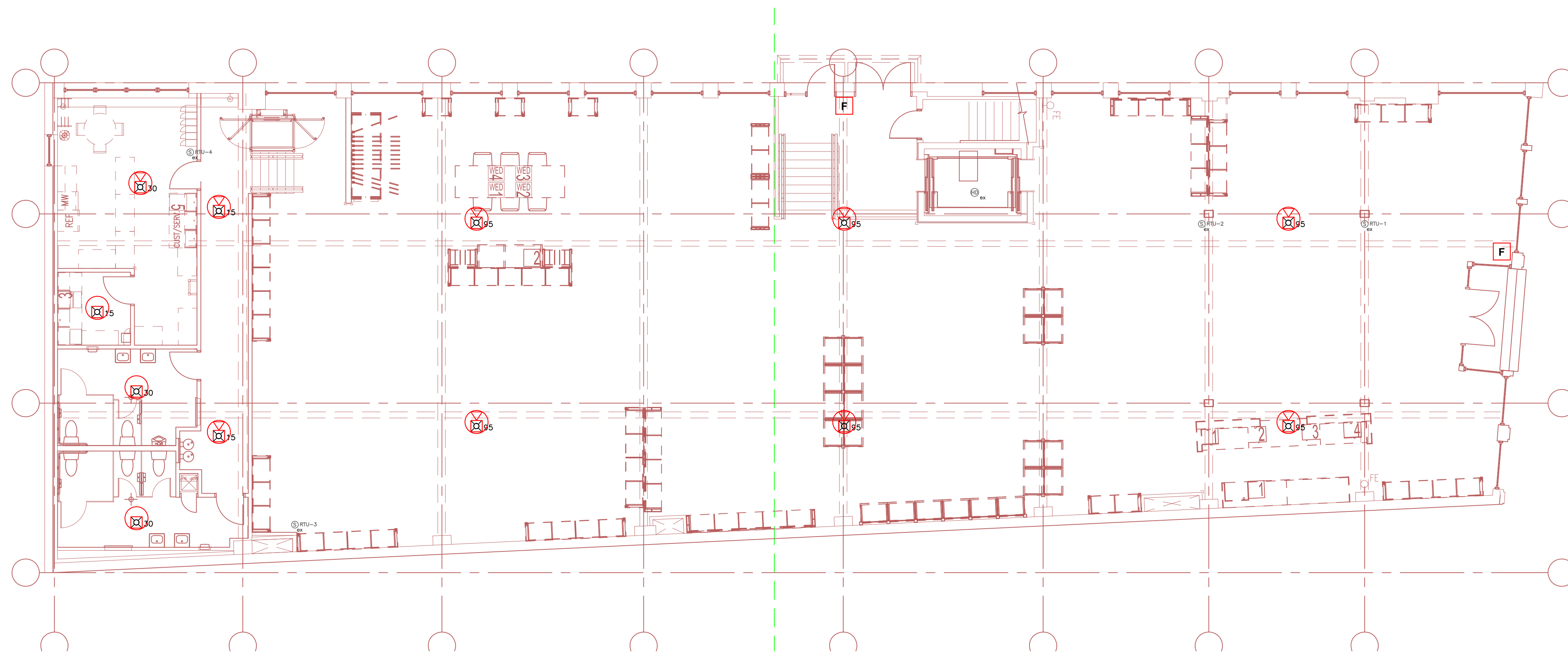


LEGEND:

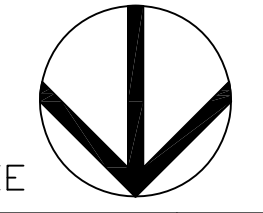
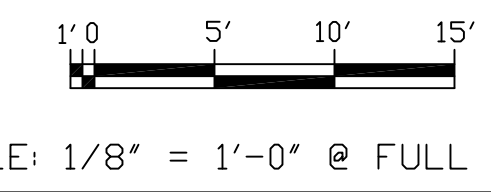
RISER DIAG SYM	NFPA SYMBOL	DESCRIPTION	CATALOG #
FACP	FACP	Silent Knight Fire Alarm Control Panel	existing
F	P	Manual Pull Station	SK-PULL
CM	ACM	Addressable Control Relay	SK-RELAY
H/U #	H/U #	Horn/Strobe Unit (White Ceiling Mount) # Indicates Candela Setting	PC2WL
S/U #	S/U #	Strobe Unit (White Ceiling Mount) # Indicates Candela Setting	SCWL
MB		Radio Master Box	AES 7788

* NFPA 170 (2009)
Tables: 6.5, 6.7.1, 6.7.2, & 6.7.3
(Some symbols may not appear on drawing)



west elm
Downtown Portland
164 Middle Street
Portland, ME 04101

ISSUED / REVISED	DATE
PRELIMINARY SET	5/22/17



OVERALL FIRST FLOOR FIRE ALARM PLAN

OVERALL FIRST FLOOR
FIRE ALARM PLAN

FA-104