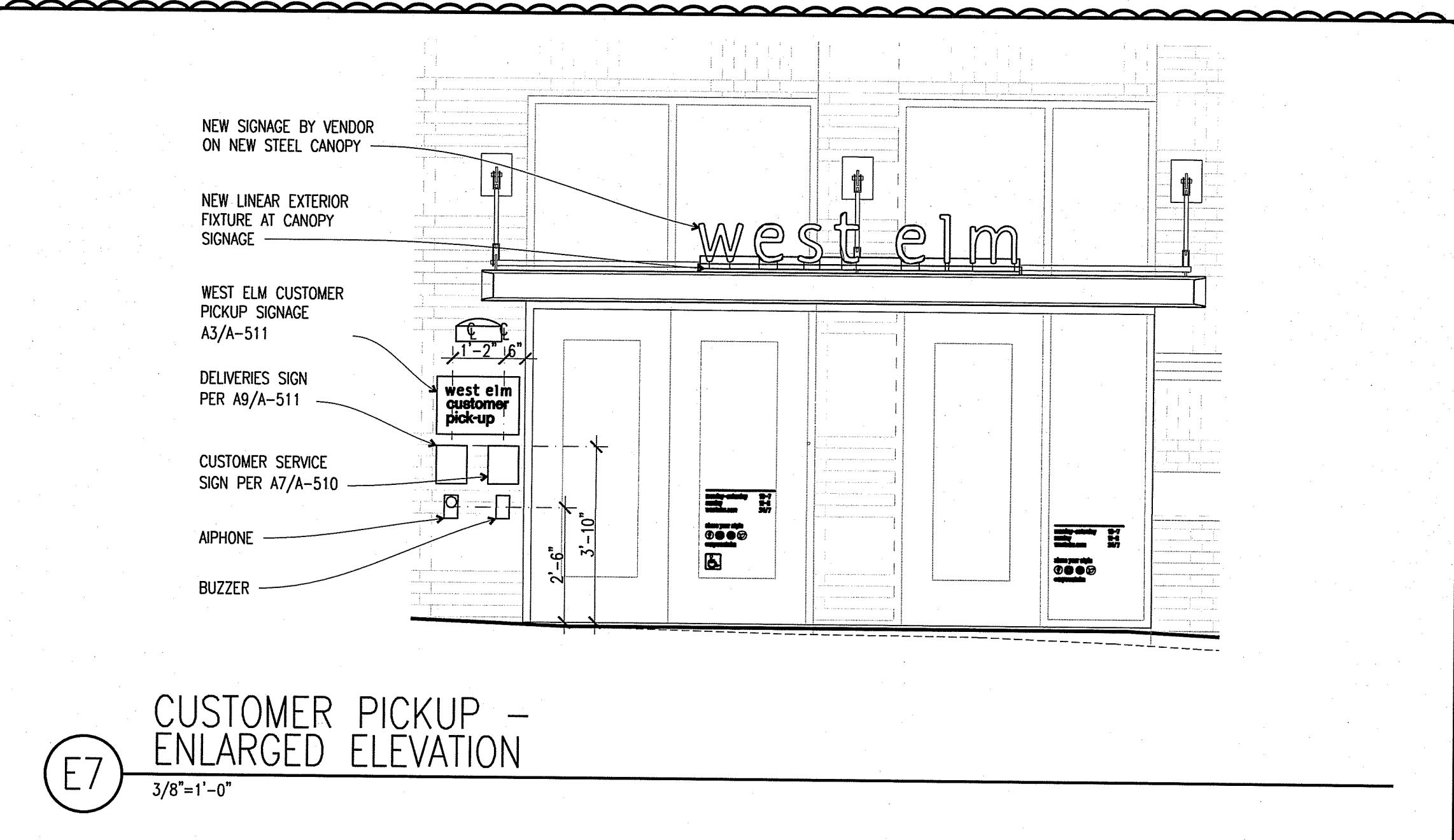
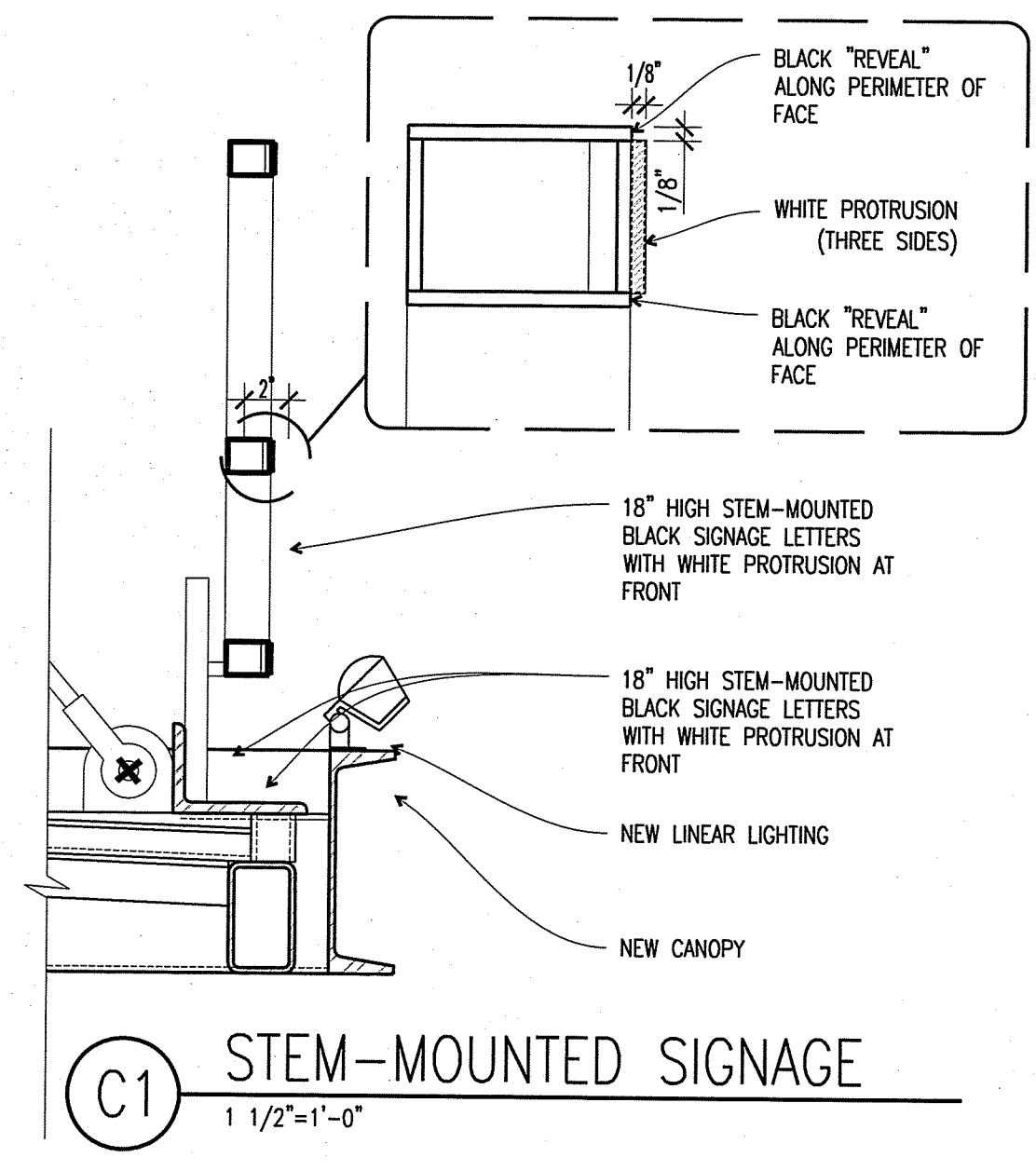


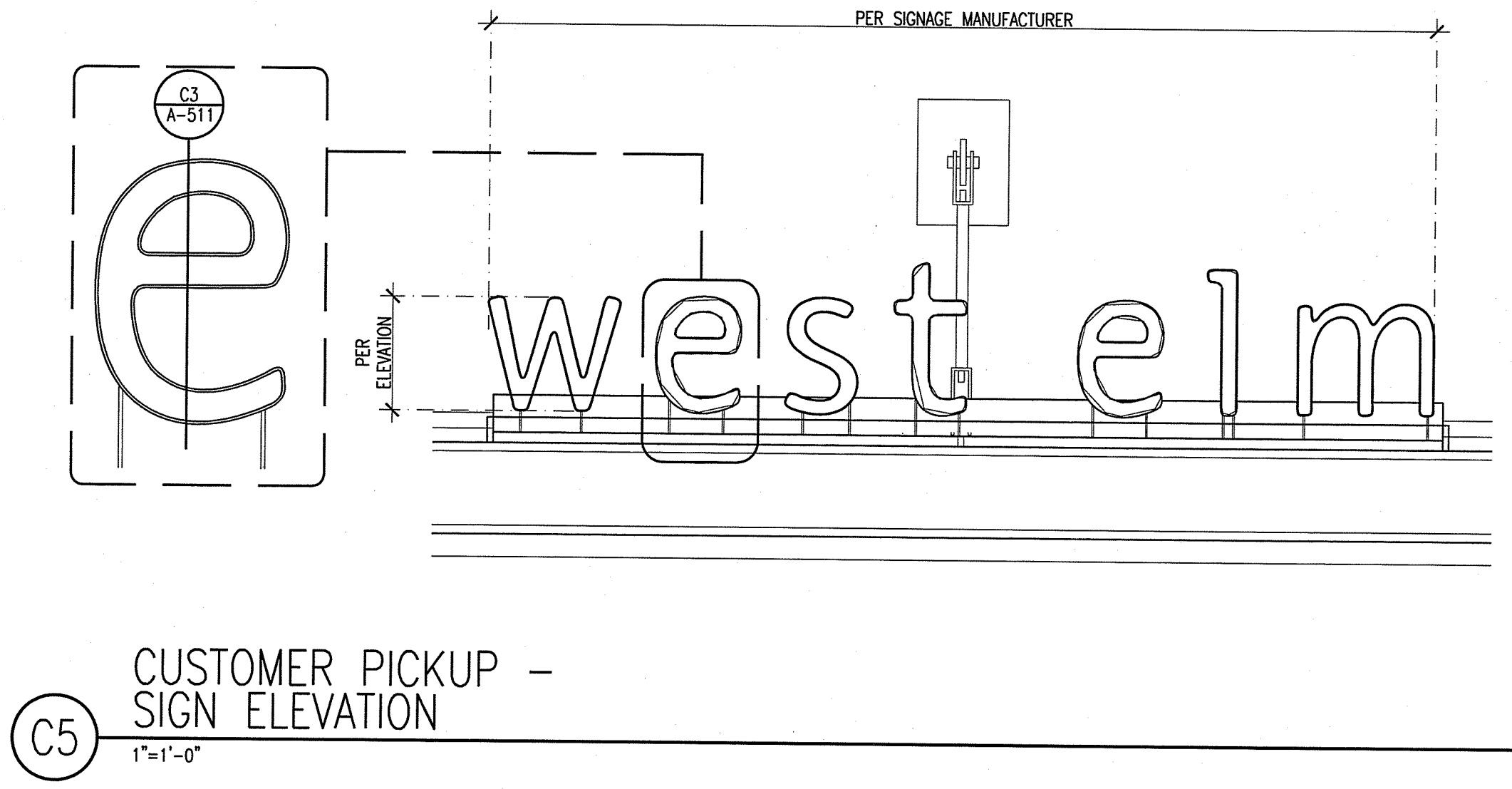
E5 ENTRY DOOR ELEVATION
3/8"=1'-0"



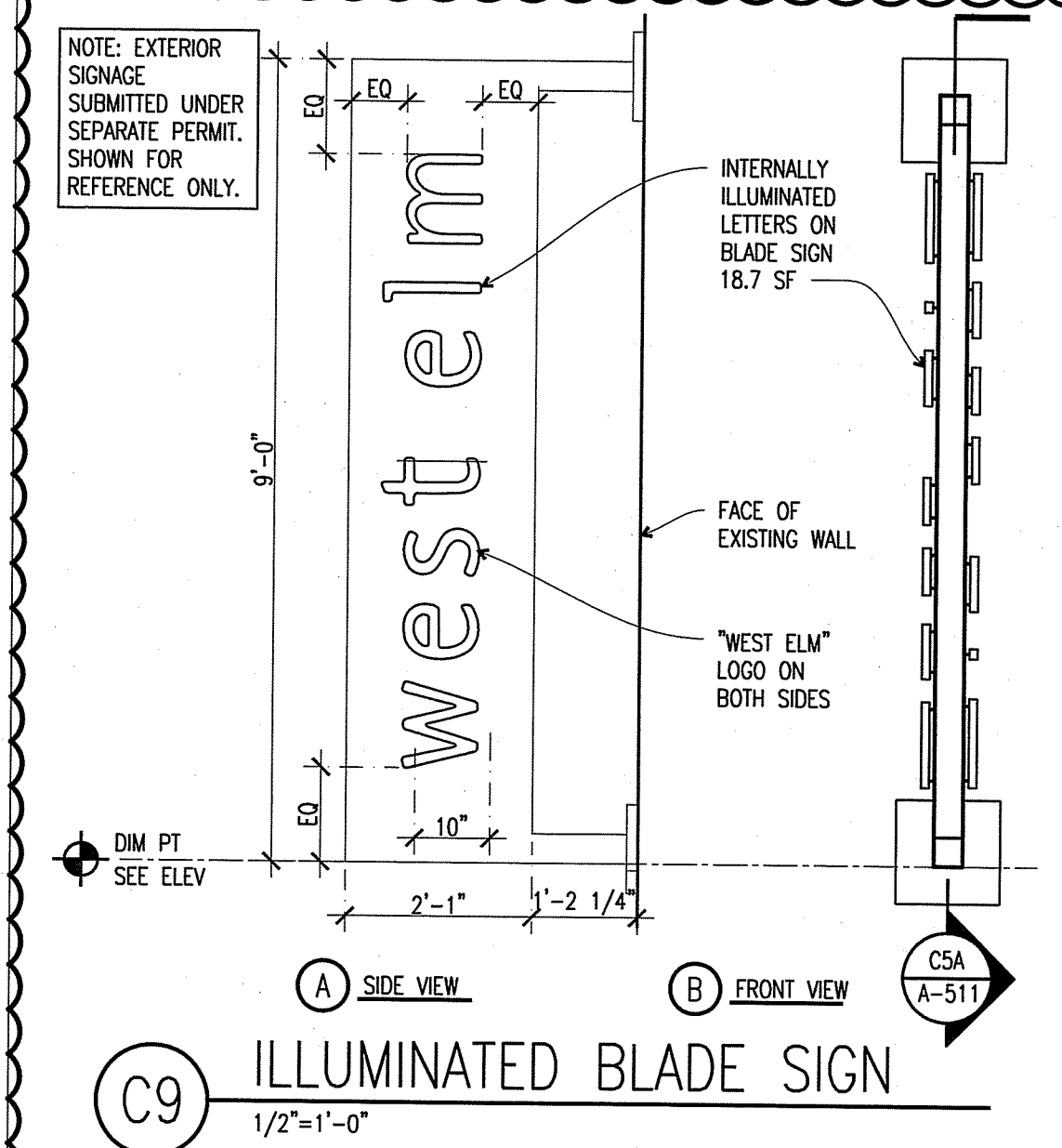
E7 CUSTOMER PICKUP - ENLARGED ELEVATION
3/8"=1'-0"



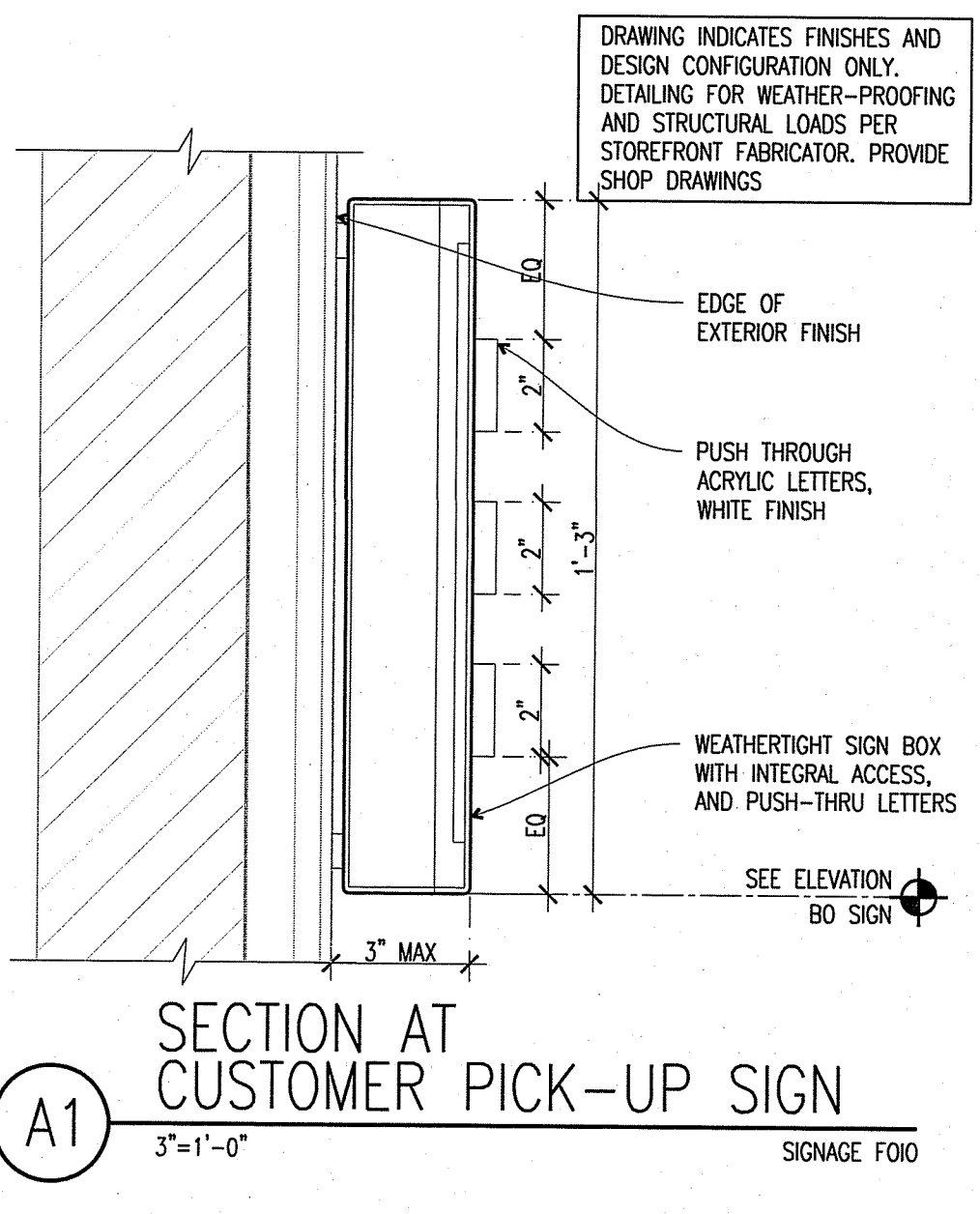
C1 STEM-MOUNTED SIGNAGE
1 1/2"=1'-0"



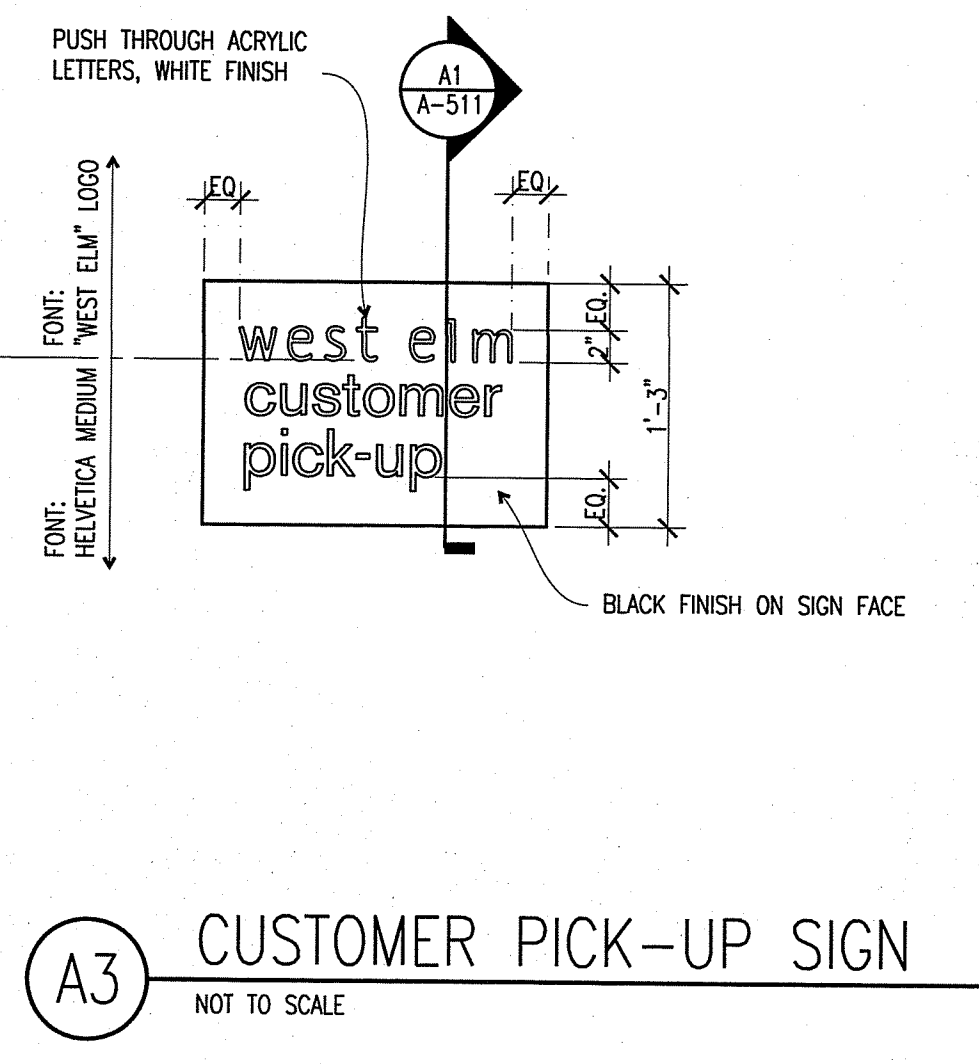
C5 CUSTOMER PICKUP - SIGN ELEVATION
1"=1'-0"



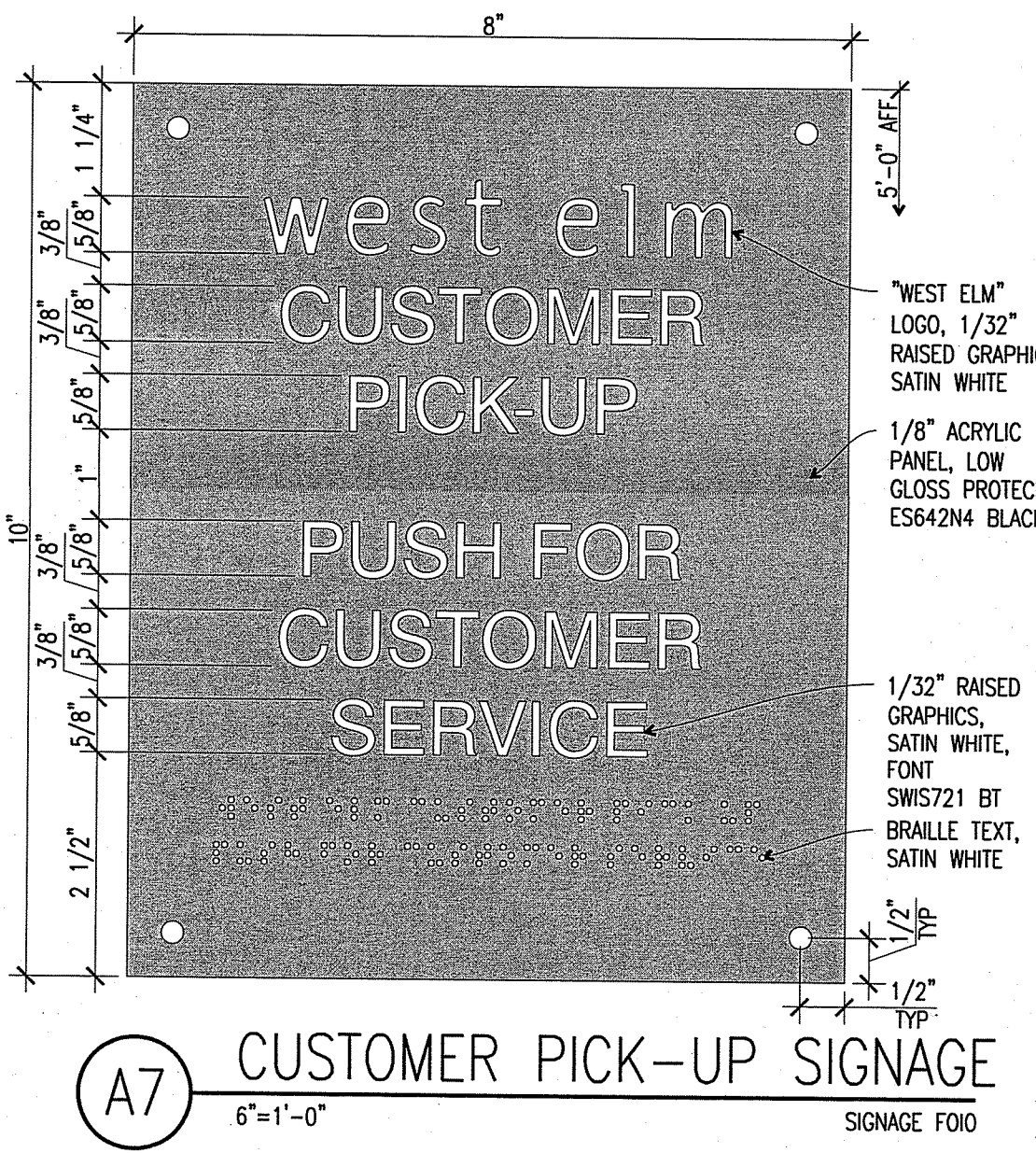
C9 ILLUMINATED BLADE SIGN
1/2"=1'-0"



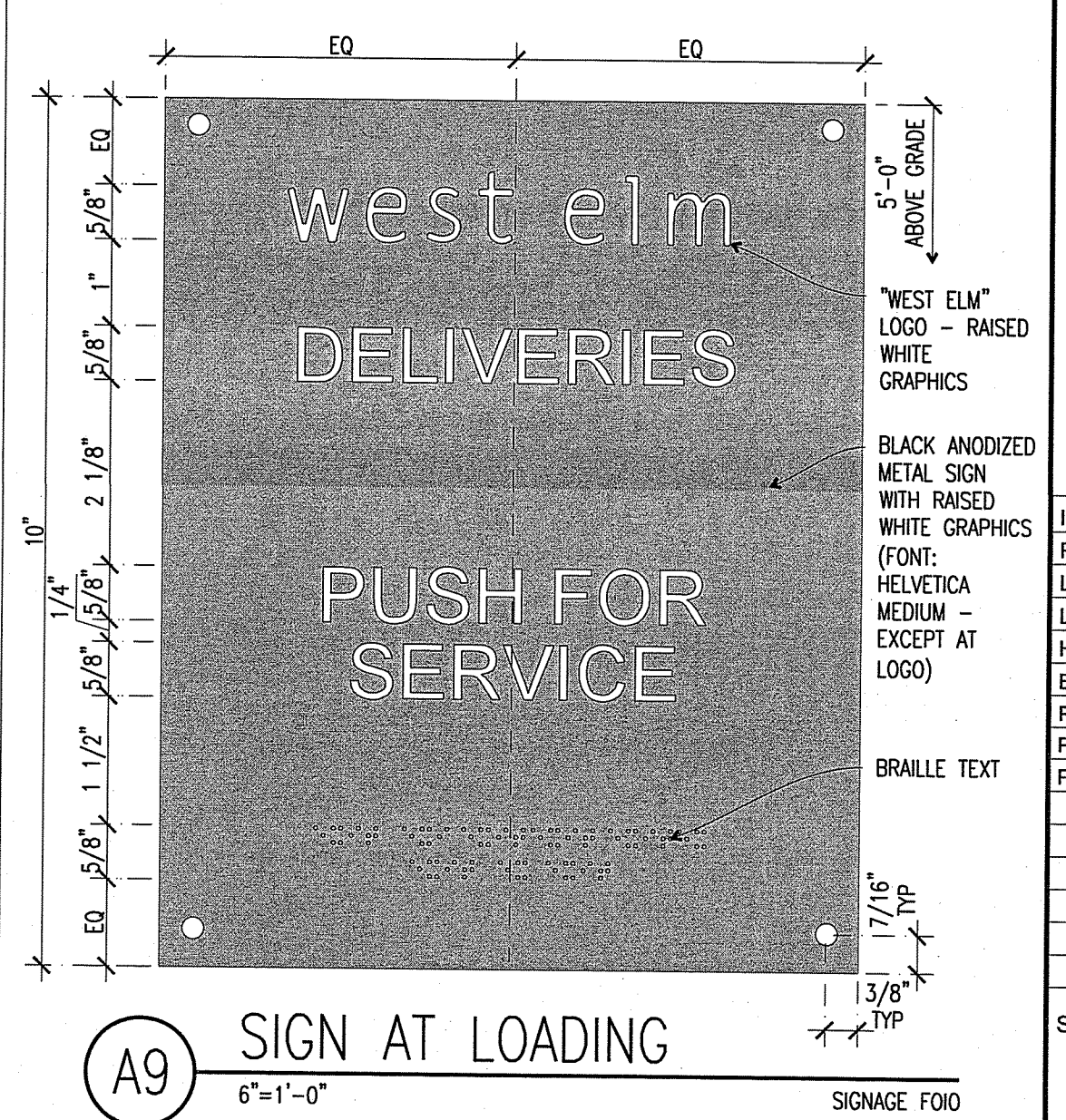
A1 SECTION AT CUSTOMER PICK-UP SIGN
3"=1'-0" SIGNAGE FOLD



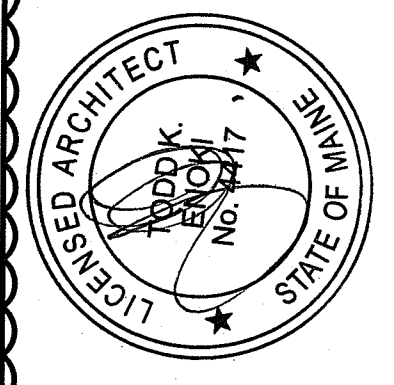
A3 CUSTOMER PICK-UP SIGN
NOT TO SCALE



A7 CUSTOMER PICK-UP SIGNAGE
6"=1'-0" SIGNAGE FOLD



A9 SIGN AT LOADING
6"=1'-0" SIGNAGE FOLD



OWNER:
WILLIAMS-SONOMA, INC.
3250 Van Ness Avenue
San Francisco, CA 94109
T 415 616 8602
F 415 439 8164
www.williams-sonoma.com

CALLISONRTKL
A DESIGN CONSULTANCY OF ARCADIS
CALLISONRTKL, INC.
www.callisonrtkl.com

west elm
Downtown Portland
164 Middle Street
Portland, ME 04101
PROJECT #006-160335.00

ISSUED / REVISED	DATE
PRELIMINARY SET	09/08/16
LL COORDINATION SET	11/08/16
LL/PERMIT SET	11/21/16
HP REVIEW SET	01/11/17
BID SET	01/26/17
PERMIT CORRECTIONS	03/22/17
PERMIT CORRECTIONS-2	04/06/17
PERMIT ADDENDUM	05/05/17

SIGNAGE DETAILS

A-511