

F

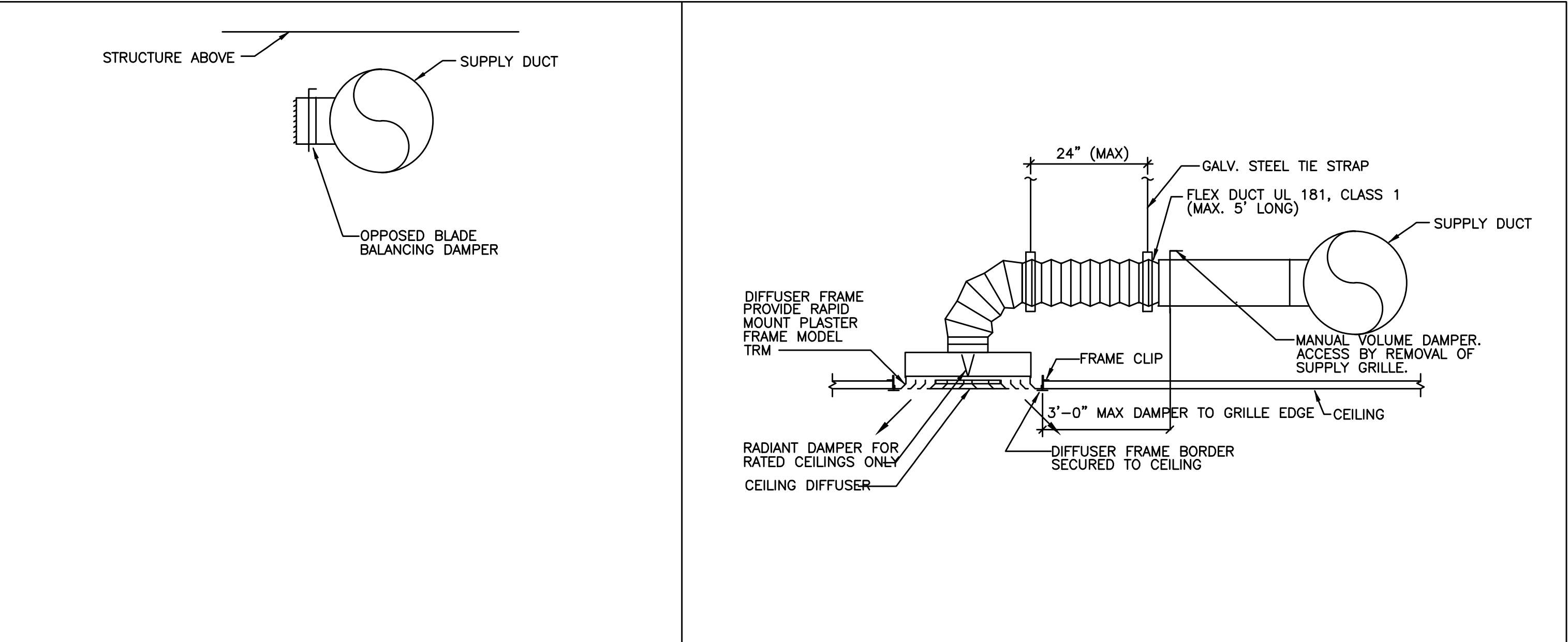
E

D

C

B

A

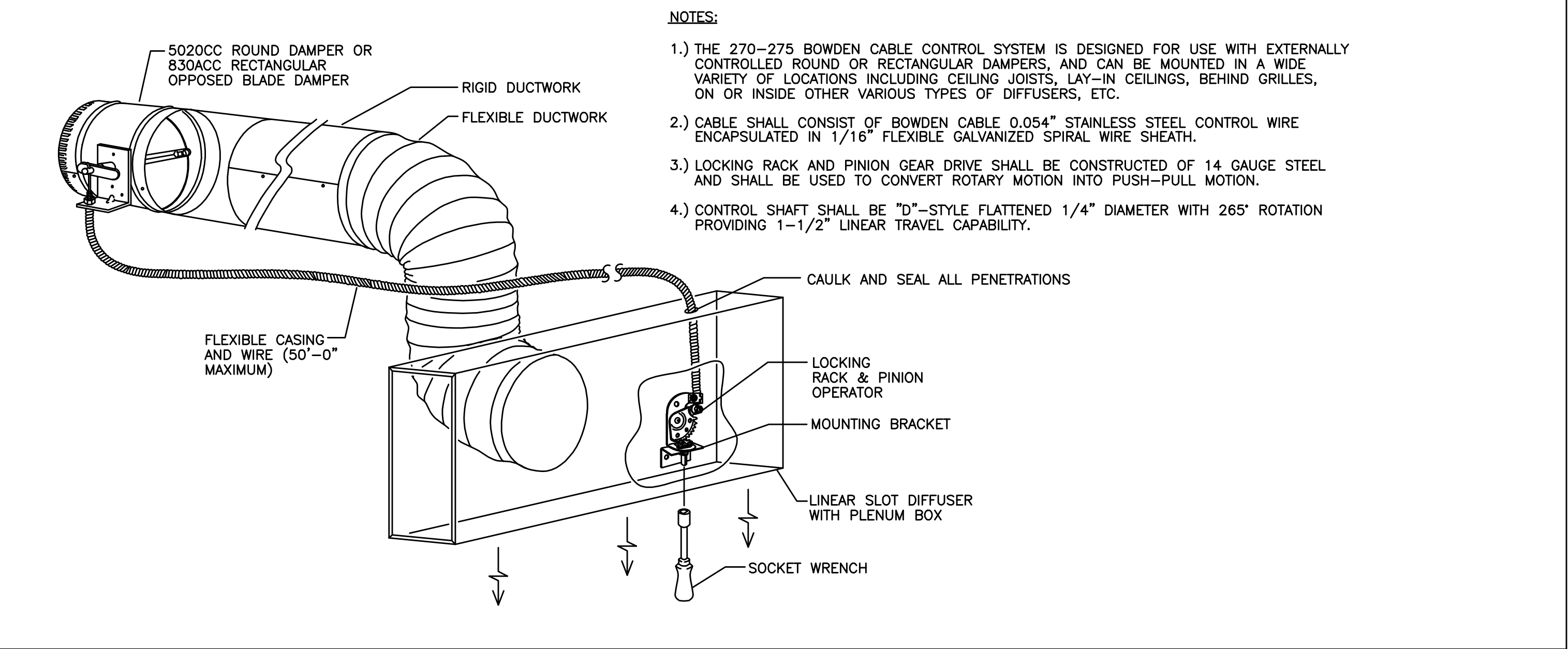


SIDE GRILLE INSTALLATION DETAIL

NOT TO SCALE
3

DIFFUSER CONNECTION DETAIL

NOT TO SCALE
2



- NOTES:**
- 1.) THE 270-275 BOWDEN CABLE CONTROL SYSTEM IS DESIGNED FOR USE WITH EXTERNALLY CONTROLLED ROUND OR RECTANGULAR DAMPERS, AND CAN BE MOUNTED IN A WIDE VARIETY OF LOCATIONS INCLUDING CEILING JOISTS, LAY-IN CEILINGS, BEHIND GRILLES, ON OR INSIDE OTHER VARIOUS TYPES OF DIFFUSERS, ETC.
 - 2.) CABLE SHALL CONSIST OF BOWDEN CABLE 0.054\" STAINLESS STEEL CONTROL WIRE ENCAPSULATED IN 1/16\" FLEXIBLE GALVANIZED SPIRAL WIRE SHEATH.
 - 3.) LOCKING RACK AND PINION GEAR DRIVE SHALL BE CONSTRUCTED OF 14 GAUGE STEEL AND SHALL BE USED TO CONVERT ROTARY MOTION INTO PUSH-PULL MOTION.
 - 4.) CONTROL SHAFT SHALL BE \"D\"-STYLE FLATTENED 1/4\" DIAMETER WITH 265° ROTATION PROVIDING 1-1/2\" LINEAR TRAVEL CAPABILITY.

LINEAR SLOT DIFFUSER DETAIL

NOT TO SCALE
5

OWNER:
WILLIAMS-SONOMA, INC.
 3250 Van Ness Avenue
 San Francisco, CA 94109
 T 415 616 8602
 F 415 439 8164
 www.williams-sonoma.com

EEA
 EEA Consulting Engineers
 6615 Yaught Ranch Road, Suite 200
 Austin, Texas 78730-2314 USA
 512.744.4400 main 512.744.4444 fax
 www.eea.com
 State of Registration: MAINE
 Firm Registration No. N/A
 EEA Project No. 20166538
 DRAWN BY: ARC
 CHECKED BY: BKK

west elm
 Downtown Portland
 164 Middle Street
 Portland, ME 04101
 PROJECT #006-160335.00

ISSUED / REVISED	DATE
PRELIMINARY SET	09/08/16
LL COORDINATION SET	11/08/16
LL/PERMIT SET	11/21/16

MECHANICAL DETAILS

M-301