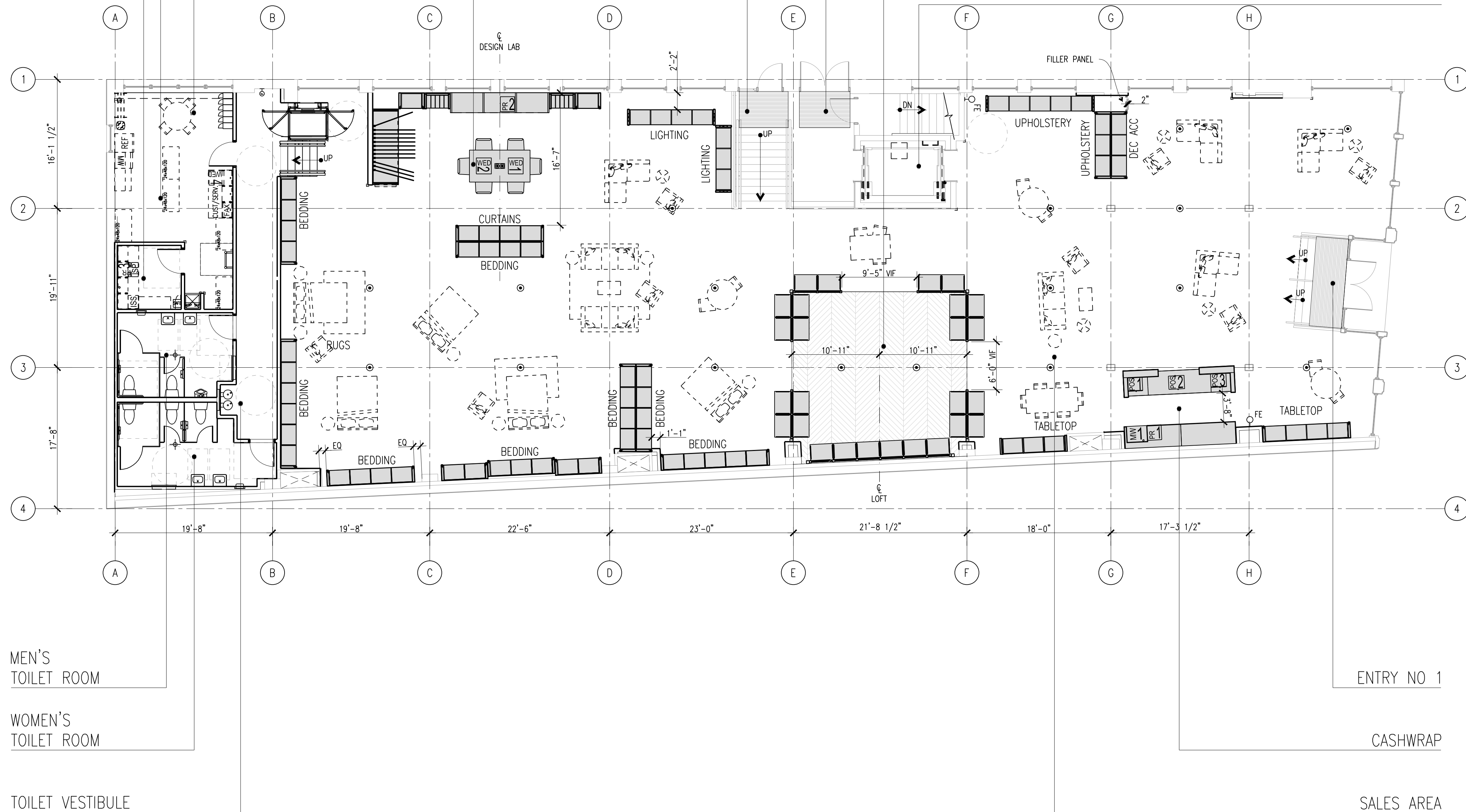


ENTRY NO 2
ACCESSIBLE ENTRANCE,
LOADING &
CUSTOMER PICK-UP
DESIGN LAB

BREAKROOM

STOCKROOM 1

MANAGER'S OFFICE



LOFT

ELEVATOR

ENTRY NO 1

CASHWRAP

SALES AREA

STOCKROOM BREAKDOWN

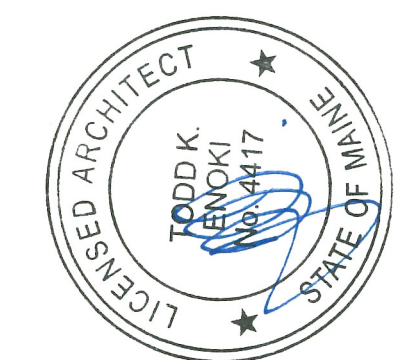
	QTY ST. 1	QTY ST. 2	SF	CF	% OF TOTAL
1x4x8	-	2	8	64	
1x4x10	-	-	-	-	
2x3x6	-	3	18	108	
2x3x10	-	2	12	120	
2x4x6	-	17	136	816	
2x4x8	-	28	224	1,792	
2x4x10	5	3	64	640	42%
BULK 3x6x8	-	2	36	288	
BULK 3x8x8	-	1	24	192	
BULK 3x6x10	-	4	72	720	
BULK 3x8x10	-	6	144	1,440	
FURN 3x3x6	-	7	63	378	
FURN 3x3x9	-	22	198	1782	58%
TOTAL	5	97	999	8,340	100%

BAY COUNTS

	QUANTITY
MERCHANDISE BAYS	67 + DESIGN LAB CREENZA
LOFT BAYS	26
FURNITURE DISPLAY BAYS	-
LOFT LIGHTING	-
DESIGN LAB	2 WORK STATIONS
CASHWRAP	3 POS / W/ BACKWRAP / 1MW
CURTAINS	4 BAYS
RUGS	12 FLIPPERS

AREA BREAKDOWN

	1ST SF	BASEMENT SF	TOTAL SF	% OF TOTAL
SALES	6,718	-	6,718	60%
STOCK	853	2,940	3,793	34%
MISC	331	348	679	6%
TOTAL	7,902	3,288	11,190	100%



CALLISONRTKL
A DESIGN CONSULTANCY OF ARCADIS
CALLISONRTKL, INC.
www.callisonrtkl.com

west elm
Downtown Portland
164 Middle Street
Portland, ME 04101
PROJECT #006-160335.00

ISSUED / REVISED	DATE
PRELIMINARY SET	09/08/16
LL COORDINATION SET	11/08/16
LU/PERMIT SET	11/21/16

OVERALL FIRST FLOOR FIXTURE PLAN

F-110

A1 OVERALL FIRST FLOOR FIXTURE PLAN

1/8"=1'-0"

