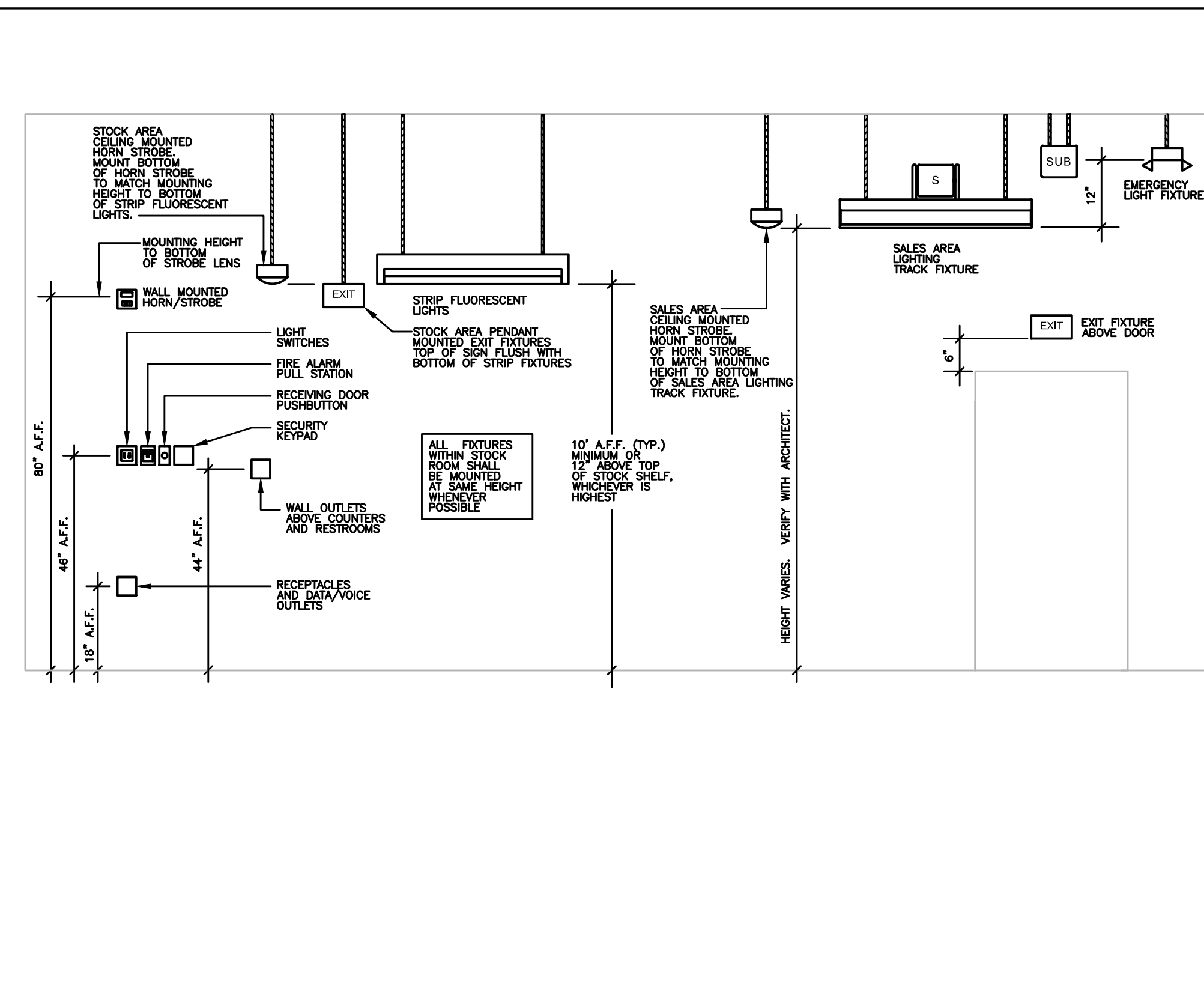


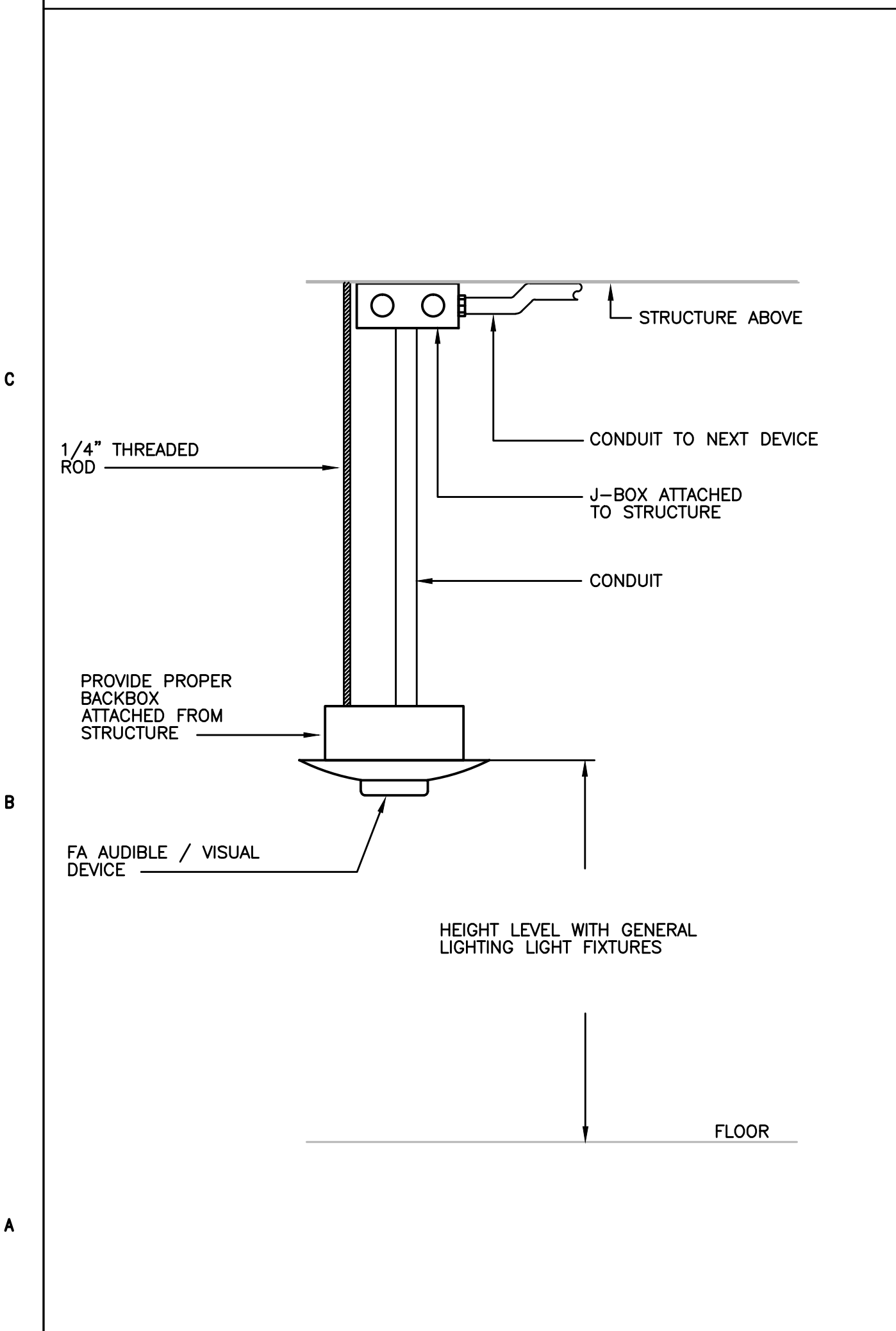
DELIVERY BUZZER WIRING DIAGRAM

1 NOT TO SCALE



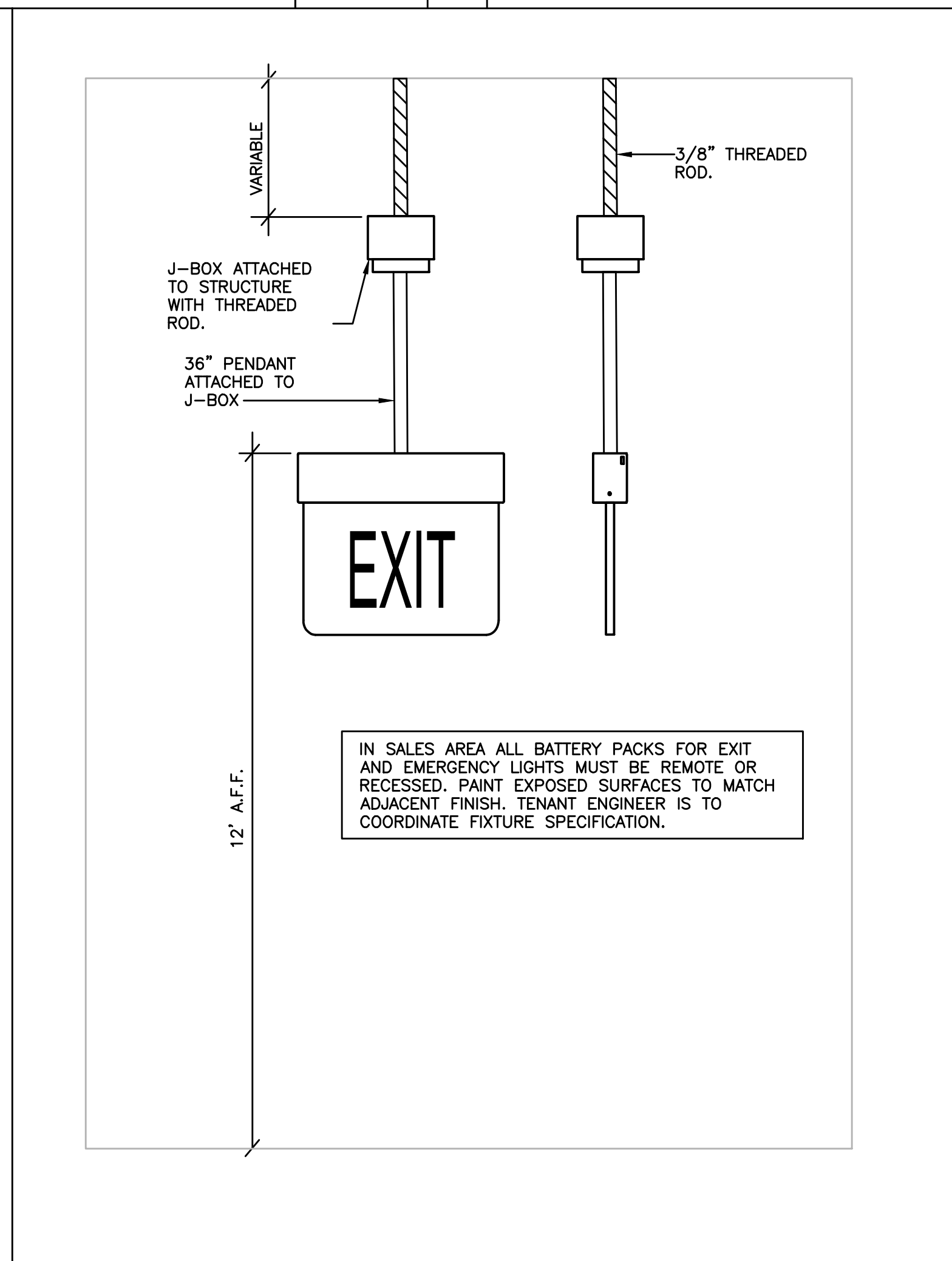
DEVICE MOUNTING HEIGHT ELEVATION DETAIL

2 NOT TO SCALE



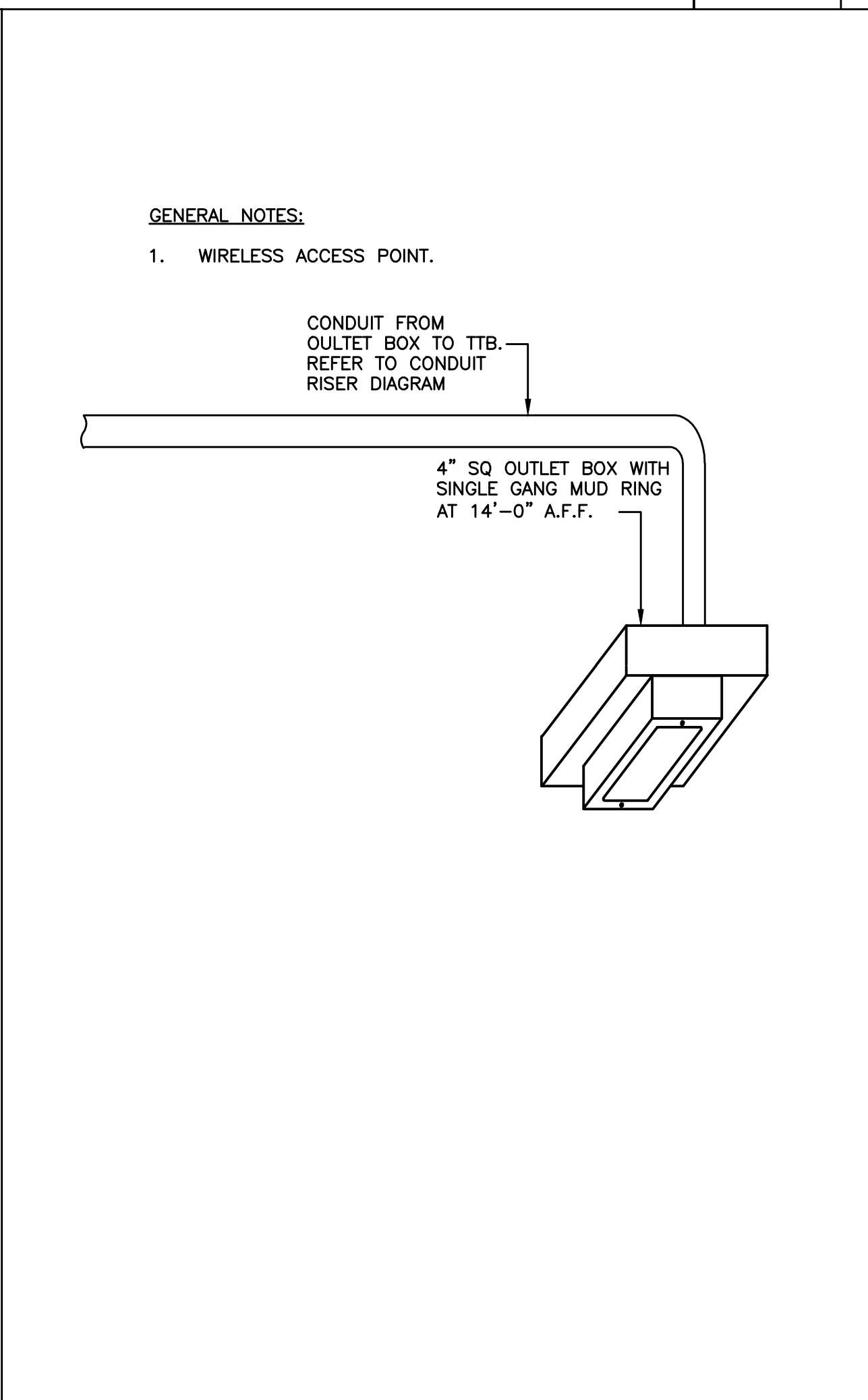
FIRE ALARM AUDIO/VISUAL MOUNTING DETAIL

6 NOT TO SCALE



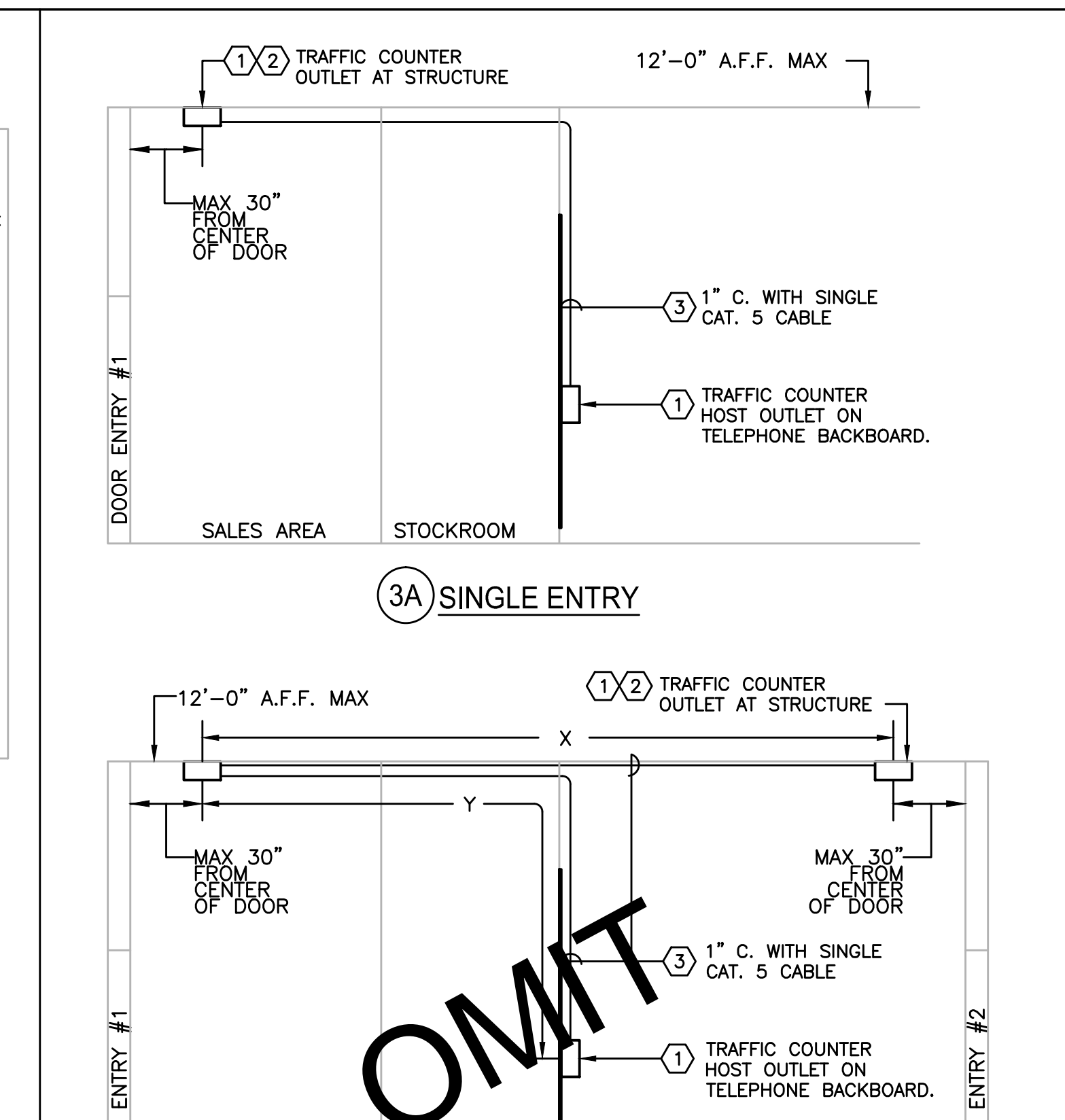
SALES FLOOR EDGE-LIT EXIT SIGN

5 NOT TO SCALE



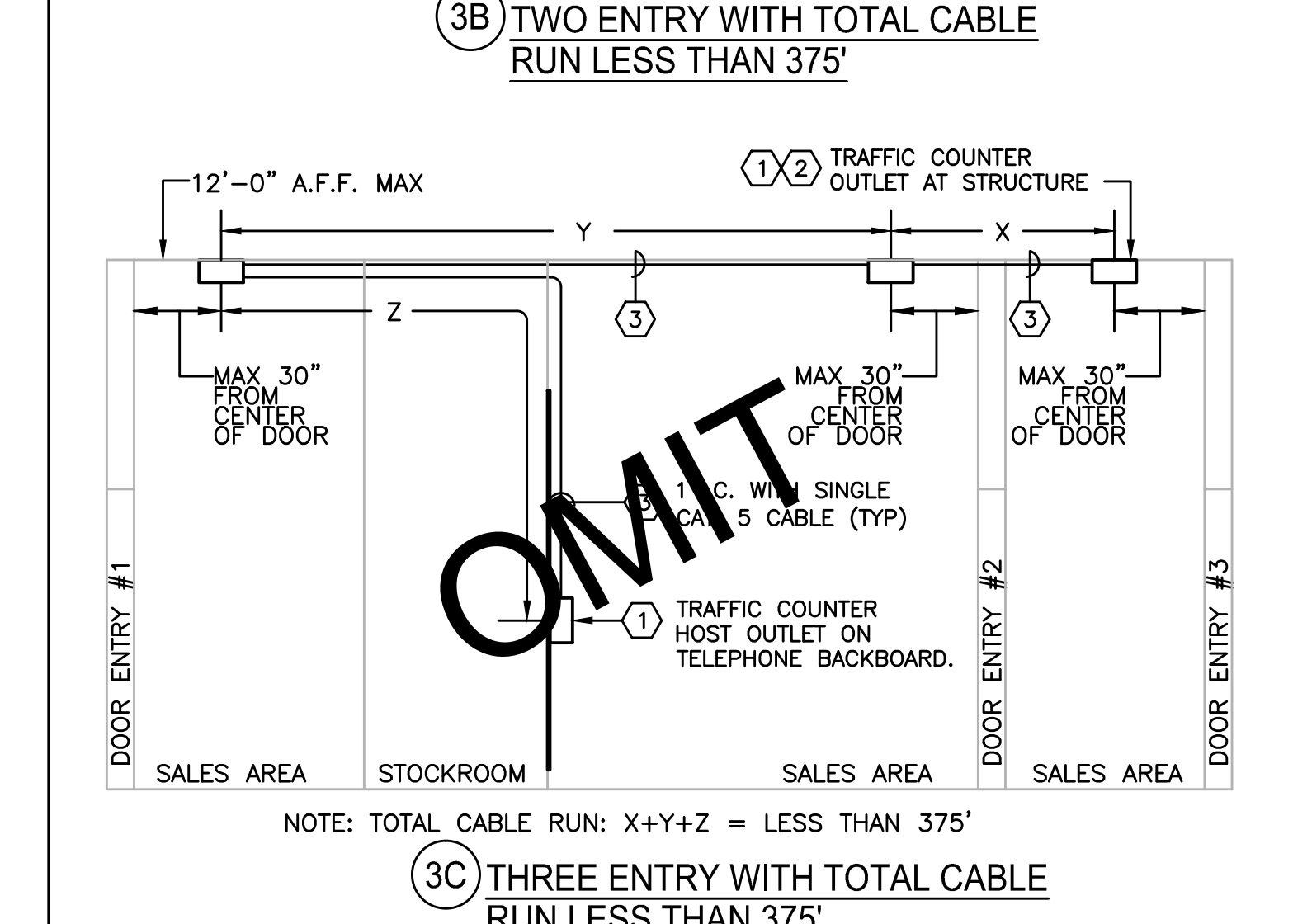
SALES FLOOR WIRELESS ACCESS POINT BACKBOARD

4 NOT TO SCALE



TRAFFIC COUNTER DETAIL

NOTE: TOTAL CABLE RUN: X+Y = LESS THAN 375'



TRAFFIC COUNTER DETAIL

NOTE: TOTAL CABLE RUN: X+Y+Z = LESS THAN 375'

- KEYED NOTES:**
- REFER TO ELECTRICAL PLANS FOR EXACT LOCATION OF OUTLET.
 - J-BOX SHALL BE MOUNTED AT STRUCTURE WITH A MAX HEIGHT OF 12'-0" A.F.F., IF STRUCTURE IS HIGHER THAN 12'-0" THEN CONDUIT SHALL TURN DOWN FROM STRUCTURE TO OCTAGONAL J-BOX AT 12'-0". J-BOX LOCATION TO BE 30" MAX HORIZONTALLY FROM THE CENTER OF THE ENTRY DOOR.
 - ELECTRICAL CONTRACTOR SHALL PROVIDE CONDUIT WITH CATEGORY 5 CABLING BETWEEN EACH OUTLET AS NOTED. LEAVE 15'-20' OF CATEGORY 5 CABLE COILED UP AT EACH OUTLET FOR EACH CABLE RUN. AT THE ENTRY DOORS, LEAVE COIL IN A LOCATION THAT CAN BE REACHED USING AN 8' LADDER.

- GENERAL NOTES:**
- ELECTRICAL CONTRACTOR SHALL PROVIDE CATEGORY 5 CABLING FOR TRAFFIC COUNTER SYSTEM. CABLE SHALL BE BERK-TEK #230247 (SOLID PLENUM) OR BELDEN #1701A (BONDED, SOLID TWISTED PAIR PLENUM. LEAVE 20' COILED UP AT EACH OUTLET FOR EACH RUN.
 - FOR MULTIPLE SALES FLOOR ENTRIES ELECTRICAL CONTRACTOR SHALL CONFIRM TOTAL CABLE RUN LENGTHS FROM OUTLET-TO-OUTLET-TO-HOST. FOR TOTAL CABLE RUNS LESS THAN 375', PROVIDE DAISY-CHAIN TOPOLOGY PER DETAIL "B". FOR TOTAL RUNS EXCEEDING 375' PROVIDE STAR TOPOLOGY PER DETAIL "C".

TRAFFIC COUNTER DETAIL

3 NOT TO SCALE

OWNER: **WILLIAMS-SONOMA, INC.**
 3250 Van Ness Avenue
 San Francisco, CA 94109
 T 415 616 8602
 F 415 439 8164
 www.williams-sonoma.com

EEA
 EEA Consulting Engineers
 6615 Vaughn Ranch Road, Suite 200
 Austin, Texas 78730-2314 USA
 512.744.4400 main 512.744.4444 fax
 www.eea.com
 State of Registration: MAINE
 Firm Registration No. N/A
 EEA Project No. 20166538
 DRAWN BY: BMW
 CHECKED BY: SMR

west elm
 Downtown Portland
 164 Middle Street
 Portland, ME 04101
 PROJECT #006-160335.00

ISSUED / REVISED	DATE
PRELIMINARY SET	09/08/16
LL COORDINATION SET	11/08/16
LL/PERMIT SET	11/21/16

ELECTRICAL DETAILS
E-204