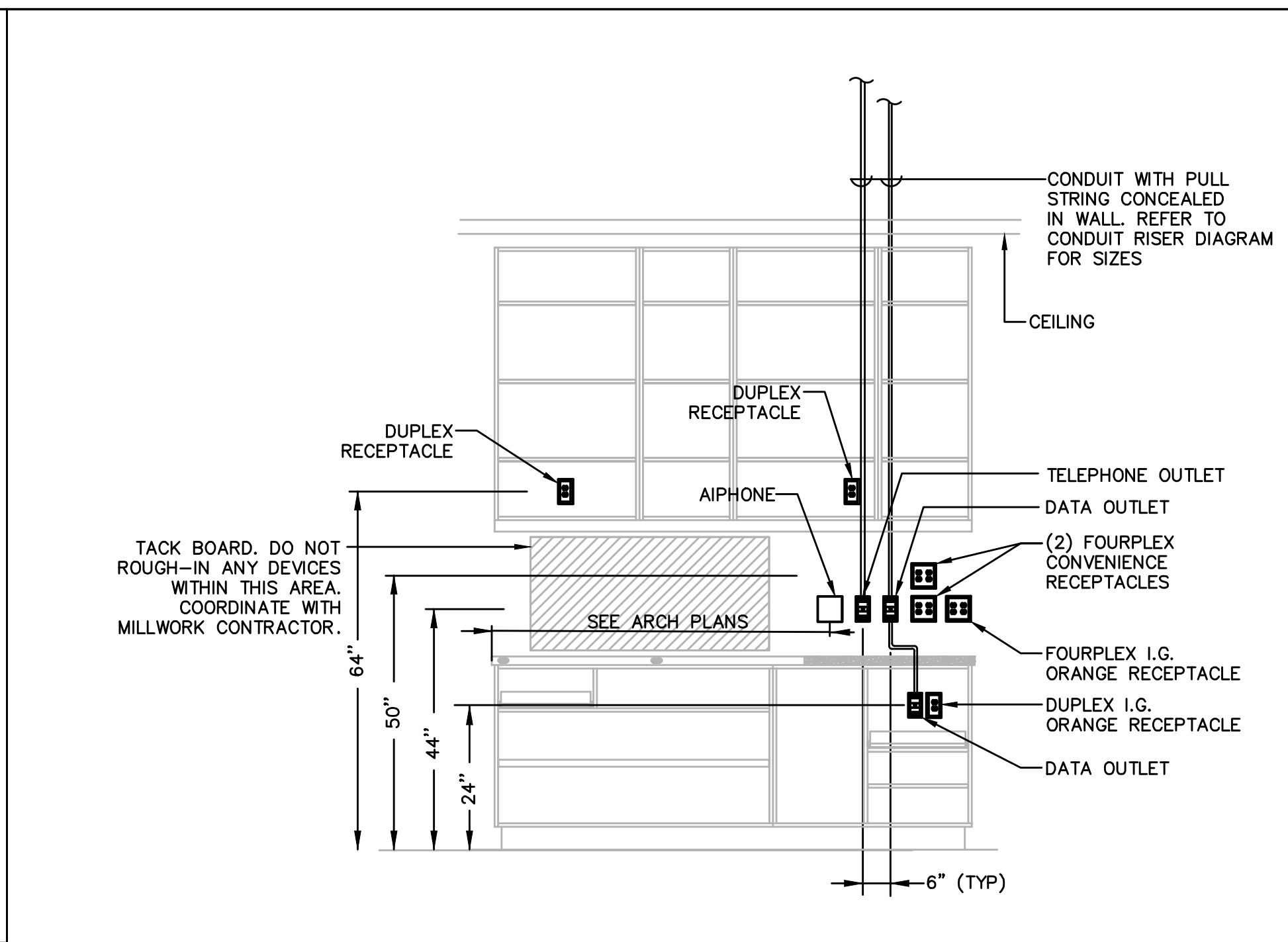


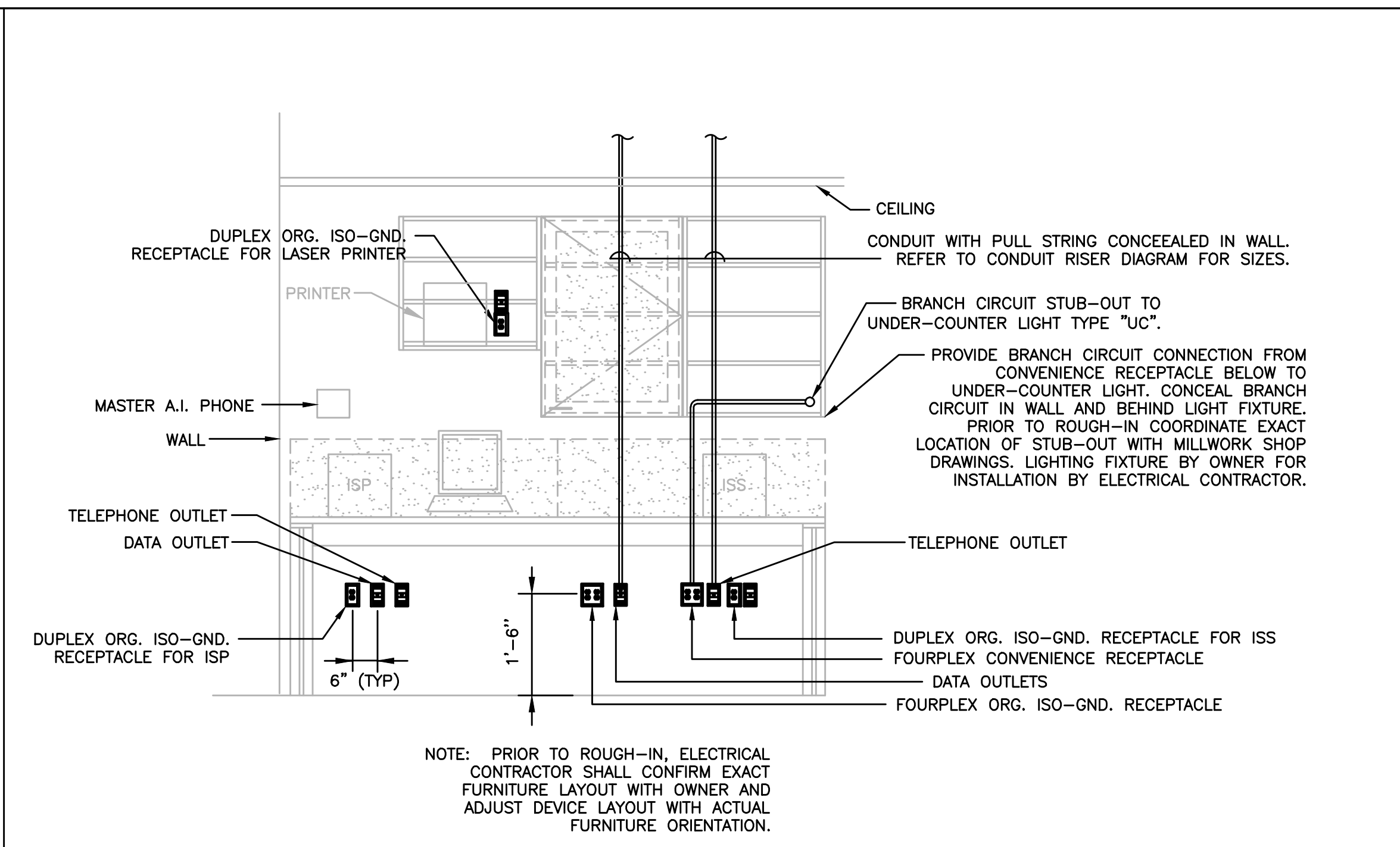
**CUSTOMER SERVICE COUNTER ELEVATION**

1  
NOT TO SCALE



**SHIPPING/RECEIVING COUNTER ELEVATION**

2  
NOT TO SCALE

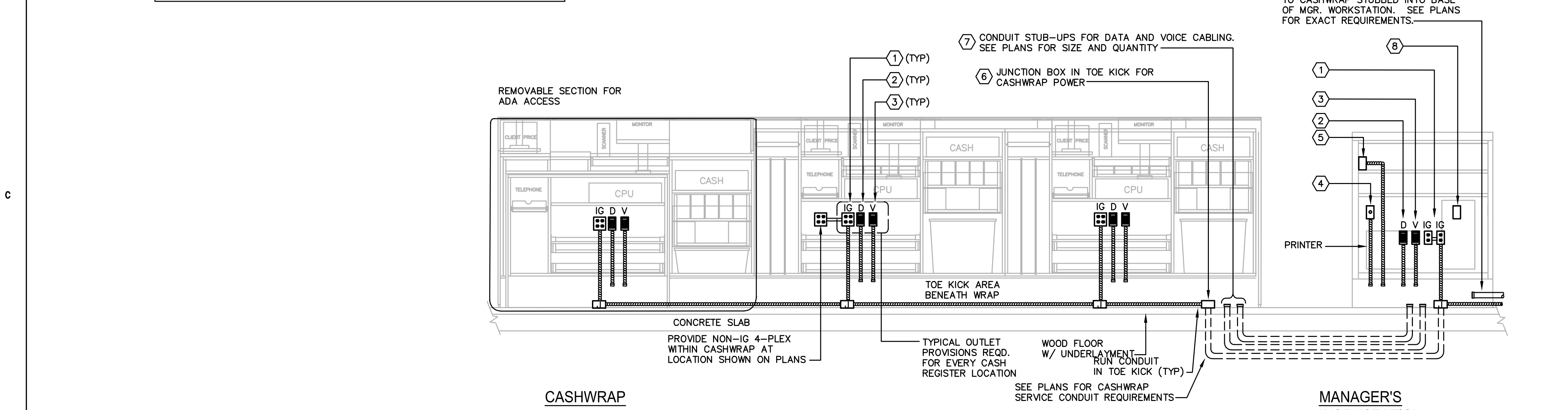


**MANAGER'S OFFICE ELEVATION**

3  
NOT TO SCALE

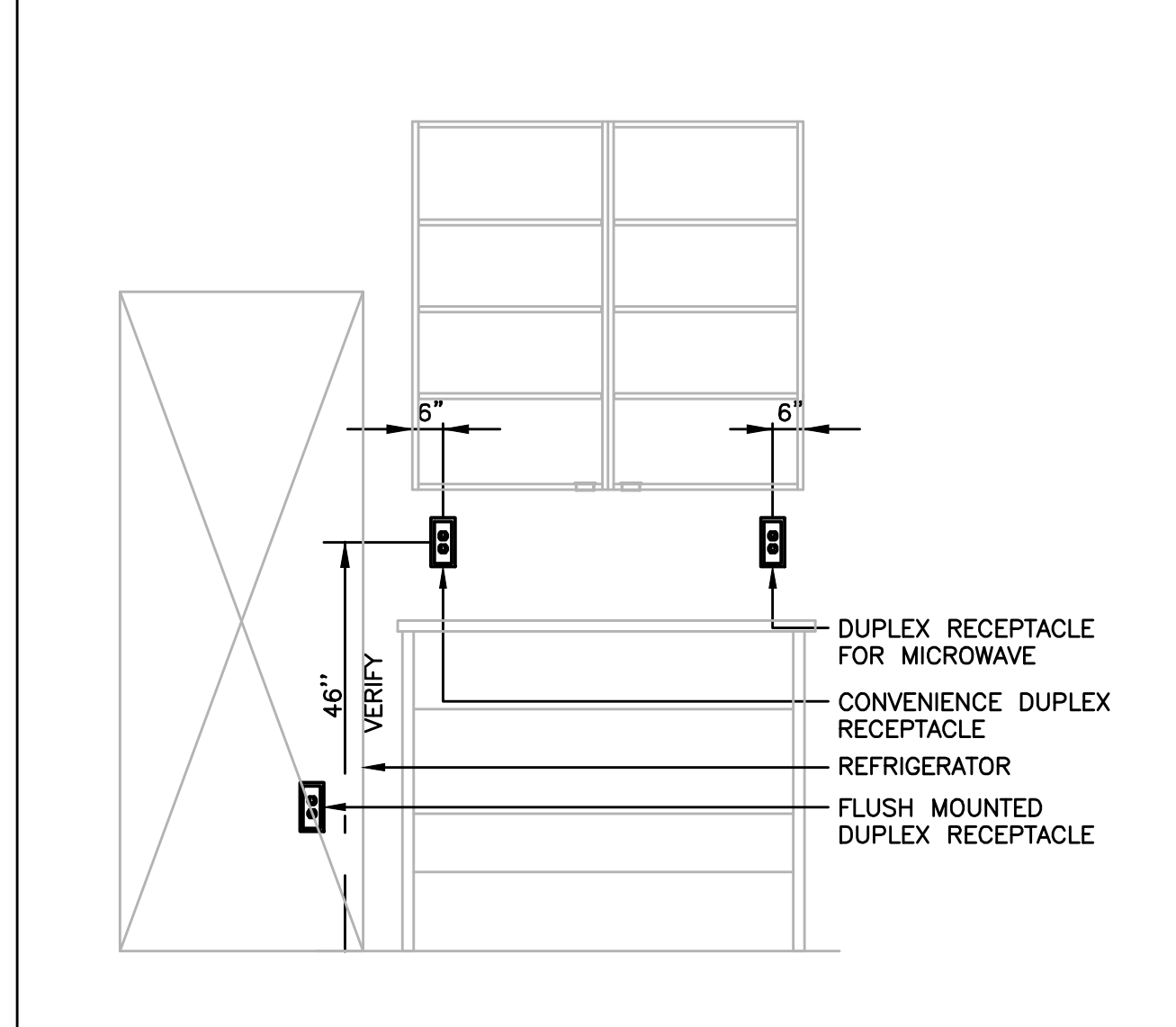
DETAIL IS DIAGRAMMATIC. ACTUAL QUANTITY OF POS REGISTER LOCATIONS SHOWN ON PLANS MAY DIFFER FROM DETAIL. ELECTRICAL CONTRACTOR SHALL VERIFY QUANTITY OF REGISTER LOCATIONS ON PLAN, AND INSTALL OUTLET AND CONDUIT PROVISIONS AT EACH LOCATION AS ILLUSTRATED ON DETAIL.

FOR LOW VOLTAGE CONDUITS, ELECTRICAL SUB-CONTRACTOR CUT CONDUITS SQUARELY, DE-BURR AND PROVIDE INSULATED BUSHING ON EACH CONDUIT END.



**CASHWRAP**

**MANAGER'S WORKSTATION**  
(MANAGER'S WORKSTATION LOCATION AS NOTED ON PLANS)



**EMPLOYEE COUNTER ELEVATION**

6  
NOT TO SCALE

- ELEVATION NOTES:**
- ELECTRICAL CONTRACTOR TO PROVIDE 4-PLEX RECEPTACLE WITH ORANGE DEVICE AND COVERPLATE MOUNTED IN MILLWORK. PROVIDE BRANCH CIRCUIT CONCEALED IN MILLWORK FROM OUTLET TO TOE KICK AND TO FLOOR MOUNT JUNCTION BOX BENEATH MILLWORK ACCESS PANEL. PRIOR TO INSTALL, COORDINATE LAYOUT WITH ARCHITECTURAL AND MILLWORK.
  - ELECTRICAL CONTRACTOR PROVIDE 4\"/>

- ELECTRICAL CONTRACTOR PROVIDE 2-GANG OUTLET BOX WITH SINGLE GANG PLASTER RING MOUNTED IN MILLWORK FOR SOUND SYSTEM VOLUME CONTROL. PROVIDE 3/4\"/>

**TYPICAL CASHWRAP AND MANAGERS WORKSTATION COUNTER ELEVATION**

4  
NOT TO SCALE

OWNER:  
**WILLIAMS-SONOMA, INC.**  
3250 Van Ness Avenue  
San Francisco, CA 94109  
T 415 616 8602  
F 415 439 8164  
www.williams-sonomainc.com

**EEA**  
EEA Consulting Engineers  
6615 Vaughn Ranch Road, Suite 200  
Austin, Texas 78730-2314 USA  
512.744.4400 main 512.744.4444 fax  
www.eeacorp.com  
State of Registration: MAINE  
Firm Registration No. N/A  
EEA Project No. 20166538  
DRAWN BY: BMW  
CHECKED BY: SMR

**west elm**  
Downtown Portland  
164 Middle Street  
Portland, ME 04101  
PROJECT #006-160335-00

ISSUED / REVISED	DATE
PRELIMINARY SET	09/08/16
LL COORDINATION SET	11/08/16
LL/PERMIT SET	11/21/16

**ELECTRICAL DETAILS**  
**E-201**