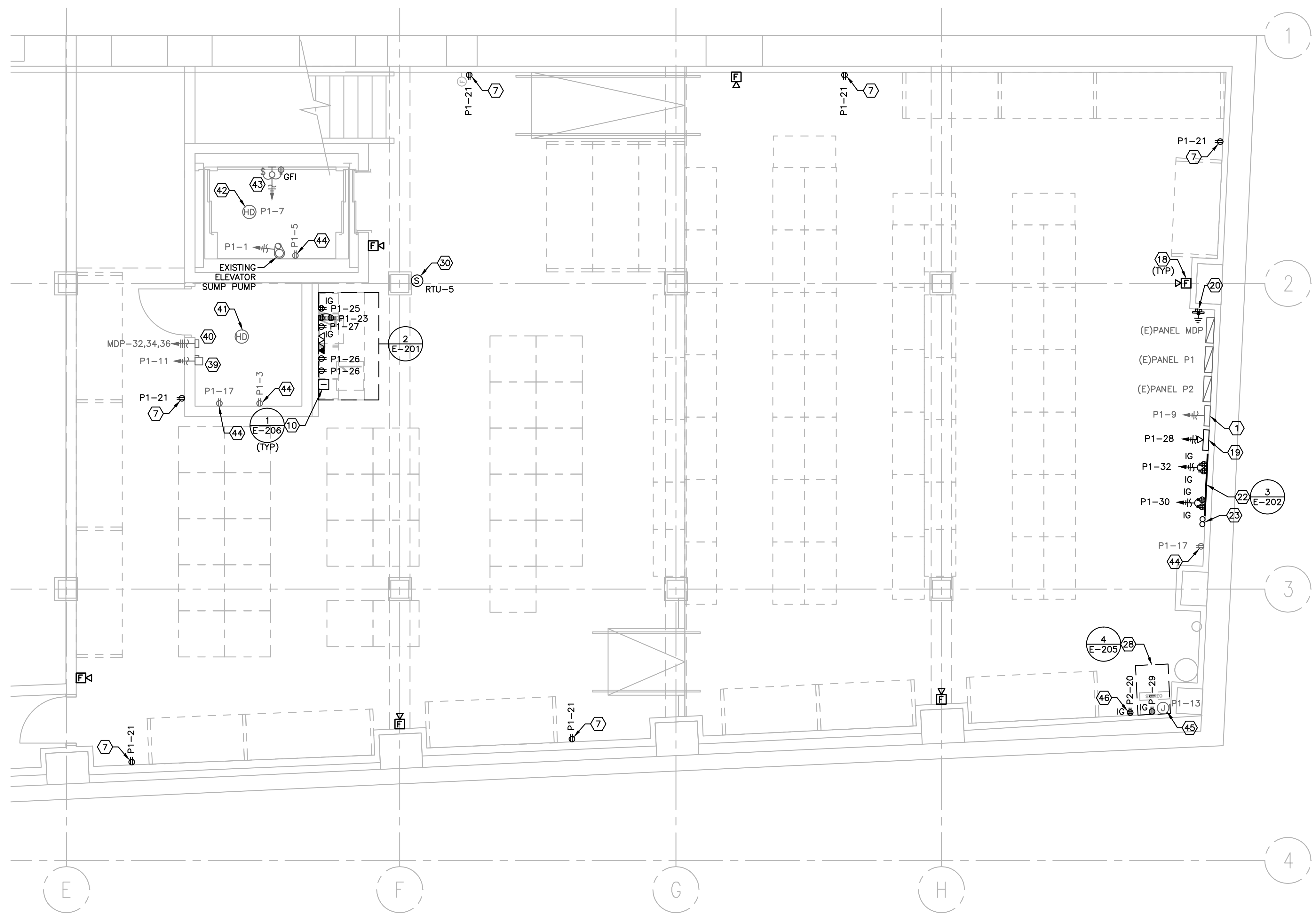


F
E
D
C
B
A



POWER KEYED NOTES

- ① EXISTING LANDLORD PROVIDED FIRE ALARM CONTROL PANEL.
- ② - ⑥ NOT USED.
- ⑦ GENERAL PURPOSE DUPLEX RECEPTACLE MOUNTED AT 18" A.F.F..
- ⑧ - ⑨ NOT USED.
- ⑩ AIPHONE WALL MOUNT INTERCOM AT 48" A.F.F.
- ⑪ - ⑰ NOT USED.
- ⑱ FIRE ALARM DEVICE.
- ⑲ LIGHTING CONTROL PANEL.
- ⑳ GROUND BAR.
- ㉑ NOT USED.
- ㉒ PROVIDE 4'X8'X3/4" FIRE RESISTANT PLYWOOD BACKBOARD WITH FOUR (4) QUADPLEX AND #6 CU. TO BUILDING GROUND.
- ㉓ (2) 2" CONDUIT WITH PULL STRING IN JOIST SPACE FOR TENANT TELEPHONE SERVICE.
- ㉔ - ㉙ NOT USED.
- ㉚ HVAC SENSOR LOCATIONS.
- ㉛ - ㉜ NOT USED.
- ㉝ EXISTING LANDLORD INSTALLED 20A, 1P DISCONNECT SWITCH FOR ELEVATOR CAB LIGHTS.
- ㉞ EXISTING LANDLORD INSTALLED 200A, 3P DISCONNECT SWITCH WITH 150A FUSES FOR ELEVATOR.
- ㉟ EXISTING LANDLORD INSTALLED HEAT DETECTOR IN ELEVATOR MACHINE ROOM.
- ㊱ EXISTING LANDLORD INSTALLED HEAT DETECTOR AT TOP OF ELEVATOR SHAFT AND IN ELEVATOR PIT.
- ㊲ EXISTING LANDLORD INSTALLED KEYLESS PORCELAIN SOCKET LIGHT, SWITCH AND GFI DUPLEX RECEPTACLE IN ELEVATOR PIT.
- ㊳ EXISTING LANDLORD INSTALLED RECEPTACLES.
- ㊴ EXISTING LANDLORD INSTALLED J-BOX FOR SPRINKLER SYSTEM.
- ㊵ QUADPLEX RECEPTACLE FOR SONOS SPEAKER SYSTEM.

POWER GENERAL NOTES

- A. PROVIDE AND INSTALL RACEWAY AND BOX FOR LV SYSTEMS.
- B. REFER TO MECHANICAL PLAN SET FOR MECHANICAL EQUIPMENT INFORMATION.
- C. REFER TO LIGHTING CONTROL PANEL SCHEDULE ON SHEET E-003 FOR CONTROLLED RECEPTACLE CIRCUITS.
- D. REMOVE ALL EXISTING ELECTRICAL EQUIPMENT NOT SHOWN ON ELECTRICAL PLANS REMOVE ALL CONDUIT AND CONDUCTOR PACK TO PANEL.

ALL ABANDONED AND/OR UNUSED COMPONENTS CREATED OR EXPOSED DURING CONSTRUCTION, INCLUDING BUT NOT LIMITED TO HVAC, CABLES, PIPING, WIRING, AND ASSOCIATED SUPPORTS AND/OR ATTACHMENTS SHALL BE REMOVED.

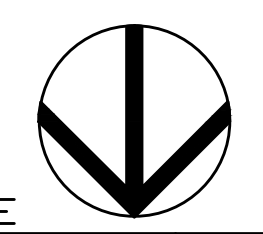
THE FIRE ALARM PLANS ARE A DEFERRED SUBMITTAL AND WILL BE SUBMITTED BY A LICENSED FIRE ALARM CONTRACTOR SUBMITTED BY THE GENERAL CONTRACTOR.

COORDINATE EXACT LOCATION OF FLOOR BOXES WITH ARCHITECTURAL DRAWINGS PRIOR TO ROUGH-IN.

FIRE ALARM SYSTEM SHOWN ON ELECTRICAL DRAWINGS ARE FOR SCHEMATIC AND BIDDING PURPOSES ONLY. FIRE ALARM SYSTEM CONTRACTOR SHALL SUBMIT FIRE DRAWINGS, EQUIPMENT CUT SHEETS, ETC... PER LOCAL CODE AND NFPA72 TO LOCAL AUTHORITIES HAVING JURISDICTION AND OWNER'S INSURANCE COMPANY FOR APPROVAL PRIOR TO ORDERING EQUIPMENT. ENGINEER WILL NOT APPROVE FIRE ALARM DRAWINGS, EQUIPMENT CUT SHEETS, ETC. INCLUDE IN BID ALL COSTS FOR PERMITS AND FEES. ALL PANELS AND PERIPHERAL DEVICES SHALL BE STANDARD PRODUCT OF SINGLE MANUFACTURER AND SHALL DISPLAY THE MANUFACTURER'S NAME ON EACH COMPONENT. ACCEPTABLE MODELS (UNLESS LANDLORD REQUIRES DIFFERENT): SILENT KNIGHT 5204 OR 5207, ADEMCO 100, FIRELITE 9200 SERIES.



SCALE: 1/4" = 1'-0" @ FULL SIZE



BASEMENT POWER PLAN

OWNER:
WILLIAMS-SONOMA, INC.
3250 Van Ness Avenue
San Francisco, CA 94109
T 415 616 8602
F 415 439 8164
www.williams-sonoma.com

EEA
EEA Consulting Engineers
6615 Yaught Ranch Road, Suite 200
Austin, Texas 78730-2314 USA
512.744.4400 main 512.744.4444 fax
www.eea.com
State of Registration: MAINE
Firm Registration No. N/A
EEA Project No. 20166538
DRAWN BY: BMW
CHECKED BY: SMR

west elm
Downtown Portland
164 Middle Street
Portland, ME 04101
PROJECT #006-160335.00

ISSUED / REVISED	DATE
PRELIMINARY SET	09/08/16
LL COORDINATION SET	11/08/16
LL/PERMIT SET	11/21/16

BASEMENT POWER PLAN

E-120