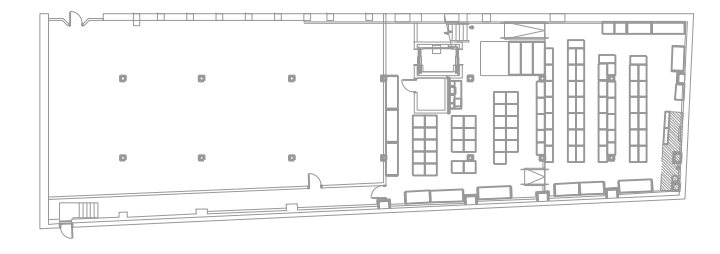
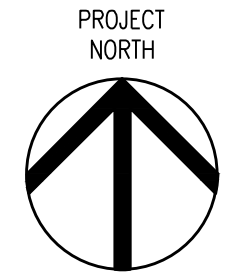


A1 ENLARGED BASEMENT REFLECTED CEILING PLAN - EAST
 1/4"=1'-0"



KEY PLAN

ISSUED / REVISED	DATE
PRELIMINARY SET	09/08/16
LL COORDINATION SET	11/08/16
LL/PERMIT SET	11/21/16

ENLARGED BASEMENT REFLECTED CEILING PLAN - EAST

A-141



CALLISONRTKL
 A DESIGN CONSULTANCY OF ARCADIS
 CALLISONRTKL, INC.
 www.callisonrtkl.com

west elm
 Downtown Portland
 164 Middle Street
 Portland, ME 04101
 PROJECT #006-160335.00

OWNER:
WILLIAMS-SONOMA, INC.
 3250 Van Ness Avenue
 San Francisco, CA 94109
 T 415 616 8602
 F 415 439 8164
 www.williams-sonomainc.com