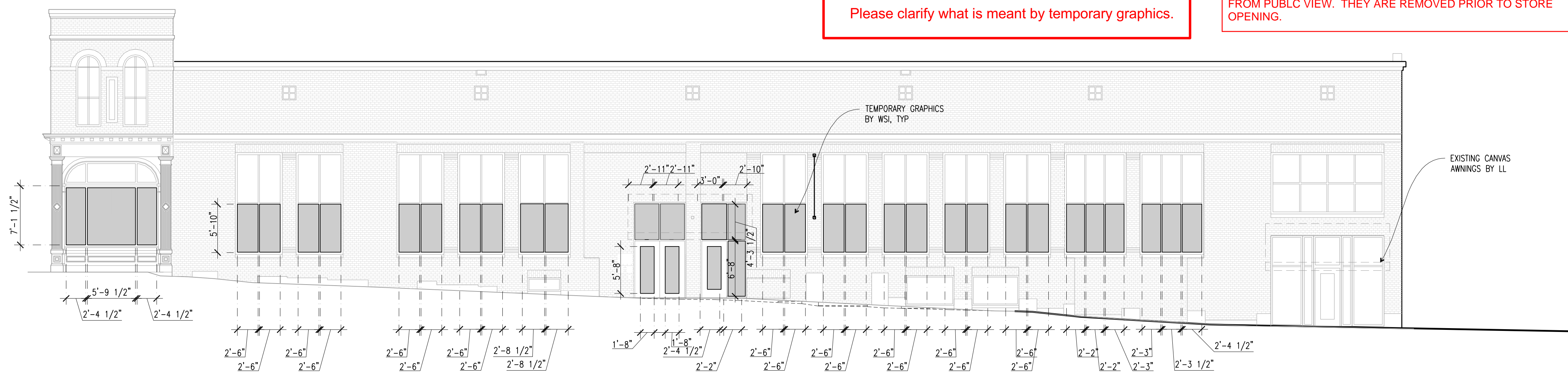


**D1** EXTERIOR ELEVATION – WEST  
1/8"=1'-0"  
0 4 8 16

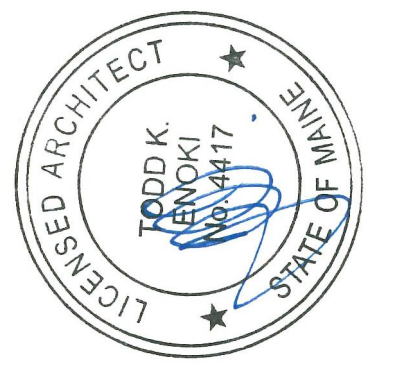
Please clarify what is meant by temporary graphics.

TEMPORARY GRAPHICS ARE APPLIED TO THE INSIDE OF THE WINDOWS DURING CONSTRUCTION. THEY INDICATE THE SOON TO BE OPEN WEST ELM STORE, SHOW IMAGES OF PRODUCT ETC AND SERVE TO SCREEN THE INTERIOR CONSTRUCTION FROM PUBLIC VIEW. THEY ARE REMOVED PRIOR TO STORE OPENING.



**A1** EXTERIOR ELEVATION – SOUTH  
1/8"=1'-0"  
0 4 8 16

NOTE: ALL WINDOW DIMENSIONS TO BE VERIFIED BY GRAPHICS VENDOR



**CALLISONRTKL**<sup>TM</sup>  
A DESIGN CONSULTANCY OF ARCADIS  
**CALLISONRTKL, INC.**  
www.callisonrtkl.com

**west elm**  
Downtown Portland  
164 Middle Street  
Portland, ME 04101  
PROJECT #006-160335.00

ISSUED / REVISED	DATE
PRELIMINARY SET	09/08/16
LL COORDINATION SET	11/08/16
LL/PERMIT SET	11/21/16

TEMPORARY STORE OPENING GRAPHICS

**A-010**

OWNER:  
**WILLIAMS-SONOMA, INC.**  
3250 Van Ness Avenue  
San Francisco, CA 94109  
T 415 616 8602  
F 415 439 8164  
www.williams-sonoma.com