

PORT CITY ARCHITECTURE

65 NEWBURY STREET  
 PORTLAND, ME 04101  
 207.761.9000  
 fax: 207.761.2010  
 info@portcityarch.com



CONSULTANTS

**Swiftcurrent Engineering Services Inc.**  
 10 Forest Fall Drive - unit 4B  
 Yarmouth, Maine 04096  
 (207) 847-9280  
 contact: Tim Matthews, P.E.  
 tim@swiftcurrenteng.com

**Mechanical Systems Engineers**  
 10 Forest Fall Drive - suite 10  
 Yarmouth, Maine 04096  
 (207) 846-9441  
 contact: Kurt Magnusson, P.E.  
 kurt@mechanicalsystemseng.com

PERMIT SET  
 10-21-16

NOT FOR CONSTRUCTION

NEWPORT DEVELOPMENT ASSOCIATES

164 Middle St  
 Portland, Maine

#	DATE	DESCRIPTION

DATE ISSUED OCTOBER 21, 2016  
 PROJECT NUMBER 16207  
 DRAWING SCALE A5 NOTED

SHEET NAME  
**MECH. & PLUMB.  
 ROOF & MEZZ.  
 DEMOLITION**

DRAWN BY  
**KFM**  
 CHECKED BY  
**KFM**

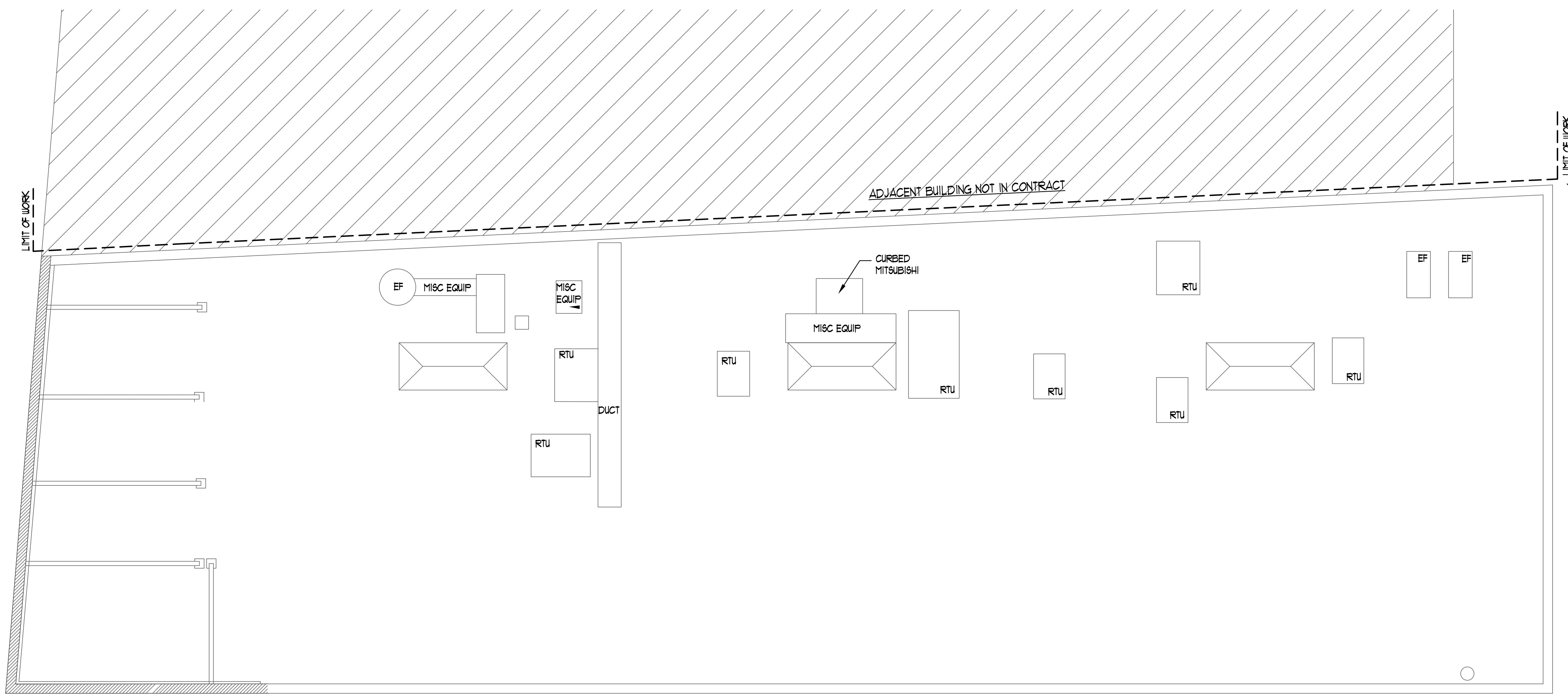
**MPD1.0**

## ROOF DEMOLITION NOTES

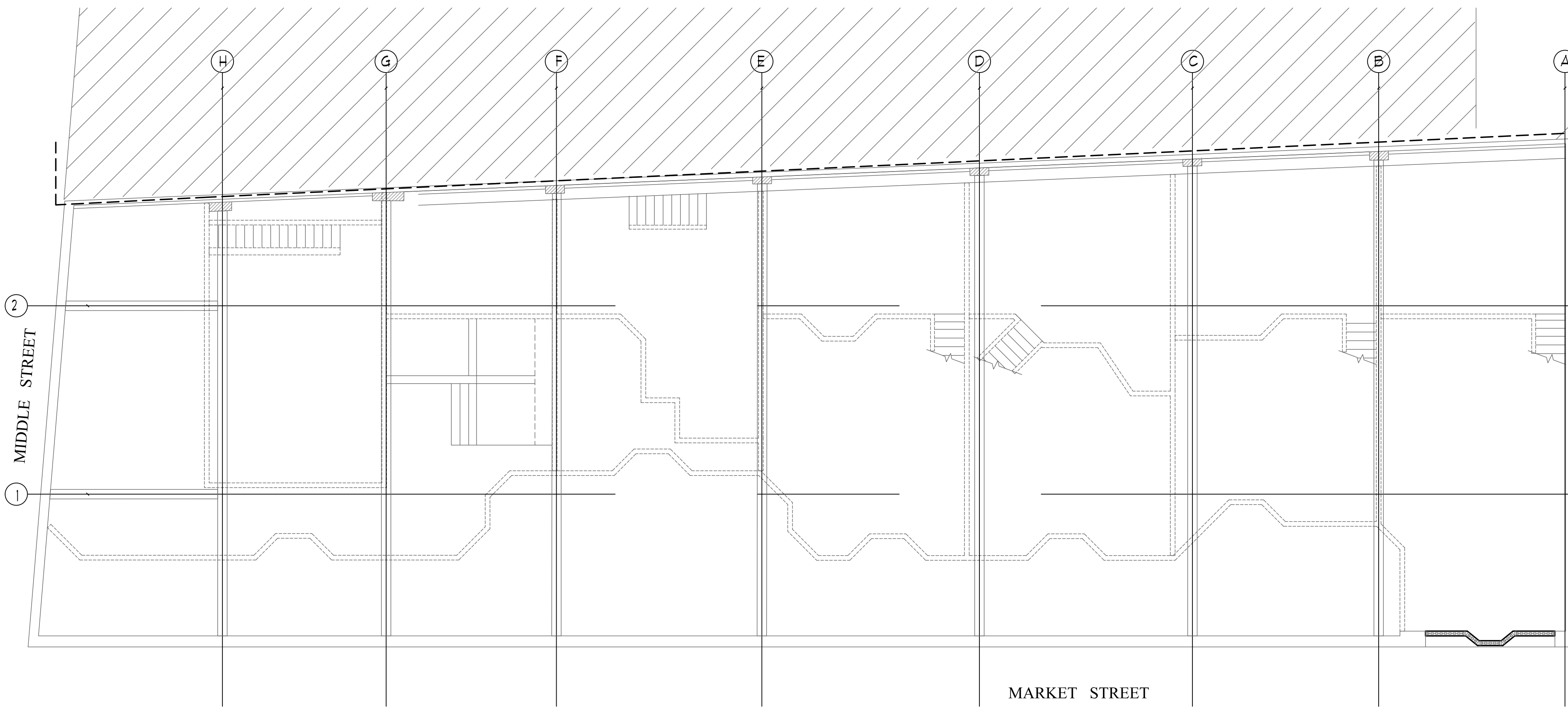
- All roof-mounted heating, ventilation and air conditioning units are to be removed from the roof.
- All ductwork and fans are to be removed from the roof.
- Remove refrigerant from the split system air conditioning units per EPA standards. Solder end caps on the liquid and gas connections for both the indoor and outdoor split systems.
- All HVAC to be taken to a location indicated by the owner (in the Greater Portland Area).
- All fans and ductwork to be removed from the jobsite and disposed of.
- All plumbing vents to be removed and disposed of.

## MEZZANINE DEMOLITION NOTES

- All ductwork to be removed from the jobsite and disposed of per EPA Standards.
- All plumbing piping and plumbing fixtures to be removed and disposed of including but not limited to:
  - Drain, waste and vent piping
  - Gas piping
  - Storm water piping.
  - Domestic hot and cold water piping



**1 ROOF MECHANICAL DEMOLITION PLAN**  
 SCALE: 1/8" = 1'-0"



**2 MEZZANINE MECHANICAL DEMOLITION PLAN**  
 SCALE: 1/8" = 1'-0"

SCALE  
 1" = 1'

SCALE  
 3/4" = 1'

SCALE  
 1/2" = 1'

SCALE  
 1/4" = 1'

SCALE  
 1/8" = 1'

SCALE  
 1/16" = 1'